

Product datasheet for RC221594L1

TAF1L (NM_153809) Human Tagged Lenti ORF Clone

Product data:

Product Type:	Expression Plasmids
Product Name:	TAF1L (NM_153809) Human Tagged Lenti ORF Clone
Tag:	Myc-DDK
Symbol:	TAF1L
Synonyms:	TAF(II)210; TAF2A2
Mammalian Cell Selection:	None
Vector:	pLenti-C-Myc-DDK (PS100064)
E. coli Selection:	Chloramphenicol (34 ug/mL)
ORF Nucleotide Sequence:	The ORF insert of this clone is exactly the same as(RC221594).
Restriction Sites:	SgfI-MluI
Cloning Scheme:	

Cloning sites used for ORF Shuttling:



* The last codon before the Stop codon of the ORF.

ACCN:	NM_153809
ORF Size:	5478 bp



[View online >](#)

OTI Disclaimer: Due to the inherent nature of this plasmid, standard methods to replicate additional amounts of DNA in E. coli are highly likely to result in mutations and/or rearrangements. Therefore, OriGene does not guarantee the capability to replicate this plasmid DNA. Additional amounts of DNA can be purchased from OriGene with batch-specific, full-sequence verification at a reduced cost. Please contact our customer care team at custsupport@origene.com or by calling 301.340.3188 option 3 for pricing and delivery.

The molecular sequence of this clone aligns with the gene accession number as a point of reference only. However, individual transcript sequences of the same gene can differ through naturally occurring variations (e.g. polymorphisms), each with its own valid existence. This clone is substantially in agreement with the reference, but a complete review of all prevailing variants is recommended prior to use. [More info](#)

OTI Annotation: This clone was engineered to express the complete ORF with an expression tag. Expression varies depending on the nature of the gene.

Components: The ORF clone is ion-exchange column purified and shipped in a 2D barcoded Matrix tube containing 10ug of transfection-ready, dried plasmid DNA (reconstitute with 100 ul of water).

Reconstitution Method:

1. Centrifuge at 5,000xg for 5min.
2. Carefully open the tube and add 100ul of sterile water to dissolve the DNA.
3. Close the tube and incubate for 10 minutes at room temperature.
4. Briefly vortex the tube and then do a quick spin (less than 5000xg) to concentrate the liquid at the bottom.
5. Store the suspended plasmid at -20°C. The DNA is stable for at least one year from date of shipping when stored at -20°C.

RefSeq: [NM_153809.1](#)

RefSeq Size: 6221 bp

RefSeq ORF: 5481 bp

Locus ID: 138474

UniProt ID: [Q8IZX4](#)

Cytogenetics: 9p21.1

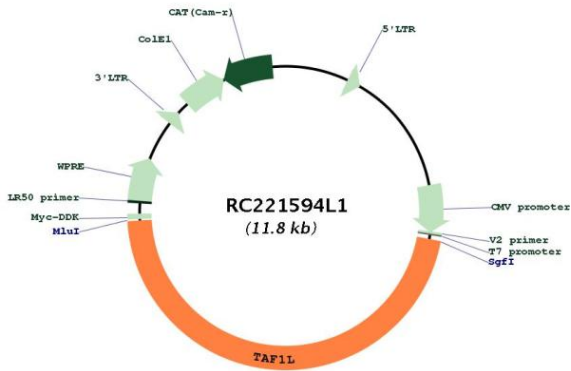
Protein Families: Protein Kinase, Transcription Factors

Protein Pathways: Basal transcription factors

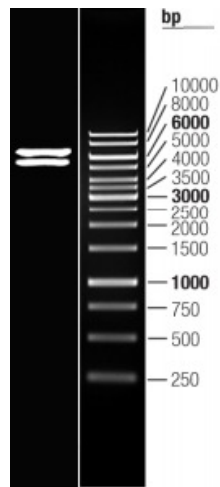
MW: 207.1 kDa

Gene Summary: This locus is intronless, and apparently arose in the primate lineage from retrotransposition of the transcript from the multi-exon TAF1 locus on the X chromosome. The gene is expressed in male germ cells, and the product has been shown to function interchangeably with the TAF1 product. [provided by RefSeq, Aug 2015]

Product images:



Circular map for RC221594L1



Double digestion of RC221594L1 using SgfI and MluI