

## Product datasheet for RC221586

### MYT1L (NM\_015025) Human Tagged ORF Clone

#### Product data:

Product Type:	Expression Plasmids
Product Name:	MYT1L (NM_015025) Human Tagged ORF Clone
Tag:	Myc-DDK
Symbol:	MYT1L
Synonyms:	MRD39; myT1-L; NZF1; ZC2H2C2; ZC2HC4B
Mammalian Cell Selection:	Neomycin
Vector:	pCMV6-Entry (PS100001)
E. coli Selection:	Kanamycin (25 ug/mL)
ORF Nucleotide Sequence:	>RC221586 representing NM_015025 Red=Cloning site Blue=ORF Green=Tags(s)

TTTTGTAATACGACTCACTATAGGGCGGCCGGAATTCGTCGACTGGATCCGGTACCGAGGAGATCTGCC  
GCC**CGATCGCC**

ATGGAGGTGGACCCGAGGAGAAGCGGCATCGCACGGTCCAAAGGGTTCGAGTTCCTGGAACCCAG  
CCATACAAGAGCTGTTCCAGCTGTCCACCCCTGGCTGTGACGGCAGTGGTTCATGTCAGTGGCAAATATGC  
AAGACACAGAAGTGTATATGGTTGCCCTTGGCGAAAAAAGAAAAACACAAGATAAACAGCCCCAGGAA  
CCTGCTCCTAAACGAAAGCCATTTGCCGTGAAAGCAGACAGCTCCTCAGTGGATGAGTGTGACGACAGTG  
ATGGGACTGAGGACATGGATGAGAAGGAGGAGGATGAGGGGGAGGAGTACTCCGAGGACAATGACGAGCC  
AGGGGATGAGGACGAGGAGGACGAGGAGGGGACCGGGAGGAGGAGGAGATCGAGGAGGAGGATGAG  
GACGATGACGAGGATGGAGAAGATGTGGAGGATGAAGAAGAGGAAGAGGAGGAGGAGGAGGAGGAGGAA  
AGGAAGAAGAAAACGAAGACCATCAAAATGAATTGTCACAATACTCGAATAATGCAAGACACAGAAAAGGA  
TGATAACAATAATGACGAATATGACAATTACGATGAACTGGTGGCCAAGTCAATTGTTAAACCTCGGCAAA  
ATCGCTGAGGATGCAGCCTACCGGGCCAGGACTGAGTCAGAAATGAACAGCAATACCTCCAATAGTCTGG  
AAGACGATAGTGACAAAAACGAAAACCTGGGTCCGAAAAGTGAGTTGAGTTAGACTTAGACAGTGTGT  
TGTTAGAGAAAACAGTGGACTCCCTTAAACTATTAGCCCAAGGACACGGTGTGTGCTCTCAGAAAACATG  
AATGACAGAAAATTATGCAGACAGCATGTGCAGCAAGACAGTGAATAATGAATTACGTCATGTTGGGGA  
AGCCCATGAACAATGGACTCATGGAAAAGATGGTGGAGGAGAGCGATGAGGAGGTGTCTGAGCAGTCT  
GGAGTGTTTGAGGAATCAGTGCTTCGACCTGGCCAGGAAGCTCAGTGAGACCAACCCGAGGAGAGGAAT  
CCGACGACAGAACATGAACATCCGTGAGCATGTCCGGCCAGAAGAGGACTTCCAGGAAGGACGCCGAC  
GAAACTACTCGGACATGCTGAACCTCATGCGGCTGGAGGAGCAGTTGAGCCCCGGTCGAGAGTGTTC  
CAGCTGTGCGAAGGAGGATGGGTGTGATGAGCGGGACGACGATACCCTCTGTGAACTCGGACAGGTCT  
GAAGAGGTGTTTCGACATGACCAAGGGGAACCTGACCTGCTGGAGAAAGCCATCGCTTTGAAAACGGAAA  
GAGCAAAGGCCATGAGGGAGAAGATGGCCATGGAAGCTGGGAGGAGGACAATATGAGGTATATGAGGA  
CCAGTCTCCGAGACAACCTCCCGGGAGGACAGAAAGCCTAAATCCAGTGACAGCCATGTCAAAAAGCCA



[View online »](#)

TACTATGATCCCTCAAGAACAGAAAAGAAAGAGAGCAAGTGTCCAACCCCGGGTGTGATGGAACCGGCC  
ACGTAAC TGGGCTGTACCCACATCACCGCAGCCTGTCCGGATGCCCGCACAAAGATAGGGTCCCTCCAGA  
AATCCTTGCCATGCATGAAAGTGTCTCAAGTGCCCACTCCGGGCTGCACGGGGCGGGCATGTCAAC  
AGCAACAGGAAC TCCACCGAAGCCTCTCCGGATGCCCGATCGCTGCAGCAGAGAACTGGCCAAGGCAC  
AGGAAAAGCACCAGAGCTGCGACGTGTCCAAGTCCAGCCAGGCCTCGGACCGCGTGCTCAGGCCAATGTG  
CTTTGTGAAGCAGCTGGAGATTCTCAGTATGGCTACAGAAACAATGTCCCAACAAC TACGCCGCGTTCC  
AACCTGGCCAAGGAGCTCGAGAAATATTCCAAGACCTCGTTTGAATACAACAGTTACGACAACCATCTT  
ATGGCAAGCGAGCCATAGCTCCCAAGGTGCAAAC CAGGGATATATCCCCAAAGGATATGATGATGCGAA  
GCGGTA CTGCAAGGACCCAGCCCCAGCAGCAGCAGCAGCAGCAGCTACGCGCCAGCAGCAGCAGCAAC  
CTGAGCTGCGGGGGGGCAGCAGCGCCAGCAGCAGCTGCAGCAAGAGCAGCTTCGACTACACGCACGACA  
TGGAGGGCGCCACATGGCGGCCACCGCCATCTCAACCTGTCCACGCGCTGCCGCGAGATGCCGAGAA  
CCTGAGCACCAGCCG CAGGACCTGTGCGCCACCGGAACCTGACATGGAGGTGGATGAGAACGGGACC  
CTGGACCTCAGCATGAACAAGCAGAGGCCCGGGACAGCTGTGCCCATCTGACCCCTCTGGAGCCCA  
TGTCCCCCAGCAGCAGG CAGTGTGAACAACCGGTGTTCCAGCTGGGGAGGGCGACTGCTGGGACTT  
GCCCGTAGACTACACAAAATGAAACCCGGAGGATAGACGAGGACGAGTCCAAAGACATTACTCCAGAA  
GACTTGGACCCATTCCAGGAGGCTCTAGAAGAAAGACGGTATCCCGGGGAGGTGACCATCCCAAGTCCCA  
AACCCAAGTACCCCTCAGTGCAAGGAGAGCAAAAAGGACTTAATAACTCTGTCTGGCTGCCCCCTGGCGGA  
CAAAAGCATTCGAAGTATGCTGGCCACCAGCTCCCAAGA ACTCAAGTGCCCCACGCTGGCTGTGATGGT  
TCTGGACATATCACCGGCAATTATGCTTCTCATCGGAGCCTTTCAGGTTGCCCAAGAGCAAAAGAAAGTG  
GTATCAGGATAGCACAGAGCAAGAAGATAAAGAAGATCAAGAACCCATCAGGTGTCCGGTCCCCGGGTG  
CGACGGCCAGGGCCACATCACTGGGAAGTACGCGTCCCATCGCAGCGCCTCCGGTGCCCTTGGCGGCC  
AAGAGGCAGAAAGACGGGTACCTGAATGGCTCCCAGTTCTCCTGGAAGTCGGTCAAGACGGAAGGCATGT  
CCTGCCCCACGCCAGGATGCGACGGCTCAGGCCAGCTCAGCGGCAGCTTCTCACACCCG CAGCTTGTG  
AGGATGCCCGAGAGCCAGCTCAGCGATGAAGAAGGCAAAGCTTCTGGAGAGCAGATGCTGACCATCAAA  
CAGCGGGCCAGCAACGGTATAGAAAATGATGAAGAAATCAAACAGTTAGATGAAGAAATCAAGGAGCTAA  
ATGAATCCAATTC CAGATGGAAGCCGATATGATTA AACTCAGA ACTCAGATTACCACGATGGAGAGCAA  
CCTGAAGACCATCGAAGAGGAGAAACAAAGTGATTGAGCAGCAGAACGAGTCTCTCCTCCACGAGCTGGCG  
AACCTGAGCCAGTCTCTGATCCACAGCCTGGCTAACATCCAGCTGCCGCACATGGATCCAATCAATGAAC  
AAAATTTTGATGCTTACGTGACTACTTTGACGGAAATGTATACAAATCAAGATCGTTATCAGAGTCCAGA  
AAATAAAGCCCTACTGAAAAATATAAAGCAGGCTGTGAGAGGAATTCAGGTC

ACGCGGCCGCTCGAGCAGAACTCATCTCAGAAGAGGATCTGGCAGCAAATGATATCCTGGA  
TTACAAGGATGACGACGATAAGGTTTAA

**Protein Sequence:** >RC221586 representing NM\_015025  
Red=Cloning site Green=Tags(s)

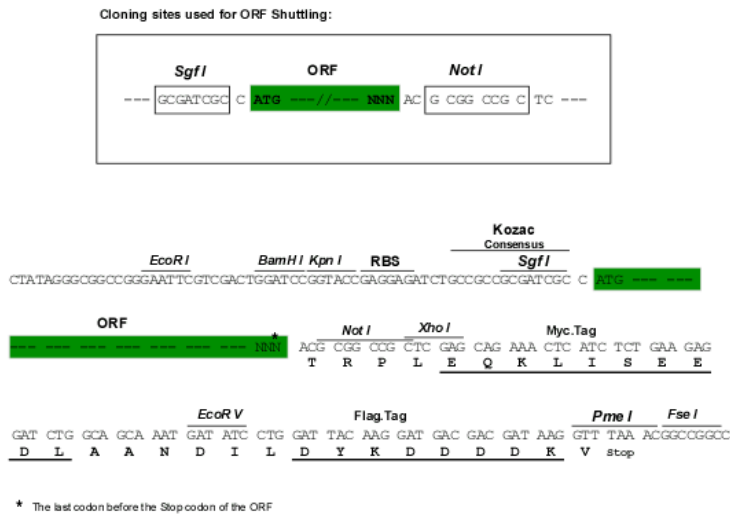
```
MEVDTEEKRHRTRSKGVVPEPAIQELFSCPTPGCDGSGHVSGKYARHRSVYGCP LAKKRKTQDKQPQE
PAPKRKPF AVKADSSSVDECDSDGTEDMDEKEEDEGE EYSEDNDEPGDEDEDEEEDGDEEEEEIEEED
DDEDEDGEDVEDEEEEEEEEEEEEEENEDHQMNCHNTRIMQDTEKDDNNDEYDNYDEL VAKSLNLGK
IAEDAAYRARTESEMNSNTSNSLEDDSDKNENLGRKSEL SLDLSDV VRETVD SLKLLAQHG VVLSNM
NDRNYADSMSQQDSRNMYVMLGKPMNGLMEKMVEESDEEVCLSSLECLRNQCFDLARKLSETNPQERN
PQQNMNIRQHVRPEEDFPGRTDPDRNYSMLNLMRL EEQLSPRSRVFASC AKEDGCHERDDDTTSVNSDRS
EEVDFMTKGNLTLLEKAI ALETERAKAMREK MAMEAGR RDNMRSYEDQSPRQLPGEDRKP KSSDSHVKKP
YYDPSRTEKKEKSCPTPGCDGTGHVTGL YPHHRSLSGCPHKDRVPEILAMHESVLKCP TPGCTGRGHVN
SNRNSHRSLSGCPIAAA EKLAQAQEKHQSCDVSKSSQASDRVLRPMCFVKQLEIPQYGYRNNVPTTTPRS
NLAKELEKYSKTSFEYNSYDNHTYGKRAIAPKVQTRDISPKGYDDAKRYCKDPS P SSSSTSSYAPSSSN
LSCGGSSASSTCSKSSFDYTHDMEAAHMAATAILNLSTRCREMPQNLSTKPQDL CATRNPMEVDENG T
LDLSMNKQRPDSCCPIIL TPLEPMSPPQQAVMNNRCFQLGEGDCWDL PVDYTKMKPRR IDEDESKDITPE
DLDPFQEALEERRY PGEVTIPSPKPKYPQCKESKDLITLSGCPLADKSI RSMLATSSQELKCP TPGCDG
SGHITGNYASHRSLSGC PRAKSGIRIAQSKEDKEDQEP I RCPVPGCDGQGHITGKYASHRSASGCPLAA
KRQKDGYLNGSQFSWKS VKTEGMSCTPGCDGSGHVSGSFLTHRSLSGC PRATSAMKAKLSGEQMLTIK
QRASNGIENDEEIKQLDEEIKELNESNSQMEADM IKLRTQITTMESNLK TIEEENK VIEQQNESLH ELA
NLSQLIHLANIQLPHMDPINEQNFDAYVTTL TEMYTNQDRYQSPENKALLENIKQAVRGIQV
```

TRRLEQKLI SEEDLAANDILDYKDDDDKV

**Chromatograms:** [https://cdn.origene.com/chromatograms/mg3807\\_c05.zip](https://cdn.origene.com/chromatograms/mg3807_c05.zip)

**Restriction Sites:** SgfI-NotI

**Cloning Scheme:**



**ACCN:** NM\_015025

**ORF Size:** 3552 bp

**OTI Disclaimer:** Due to the inherent nature of this plasmid, standard methods to replicate additional amounts of DNA in E. coli are highly likely to result in mutations and/or rearrangements. Therefore, OriGene does not guarantee the capability to replicate this plasmid DNA. Additional amounts of DNA can be purchased from OriGene with batch-specific, full-sequence verification at a reduced cost. Please contact our customer care team at [custsupport@origene.com](mailto:custsupport@origene.com) or by calling 301.340.3188 option 3 for pricing and delivery.

The molecular sequence of this clone aligns with the gene accession number as a point of reference only. However, individual transcript sequences of the same gene can differ through naturally occurring variations (e.g. polymorphisms), each with its own valid existence. This clone is substantially in agreement with the reference, but a complete review of all prevailing variants is recommended prior to use. [More info](#)

**OTI Annotation:** This clone was engineered to express the complete ORF with an expression tag. Expression varies depending on the nature of the gene.

**Components:** The ORF clone is ion-exchange column purified and shipped in a 2D barcoded Matrix tube containing 10ug of transfection-ready, dried plasmid DNA (reconstitute with 100 ul of water).

**Reconstitution Method:**

1. Centrifuge at 5,000xg for 5min.
2. Carefully open the tube and add 100ul of sterile water to dissolve the DNA.
3. Close the tube and incubate for 10 minutes at room temperature.
4. Briefly vortex the tube and then do a quick spin (less than 5000xg) to concentrate the liquid at the bottom.
5. Store the suspended plasmid at -20°C. The DNA is stable for at least one year from date of shipping when stored at -20°C.

**RefSeq:** [NM\\_015025.4](#)

**RefSeq Size:** 7152 bp

**RefSeq ORF:** 3555 bp

**Locus ID:** 23040

**UniProt ID:** [Q9UL68](#)

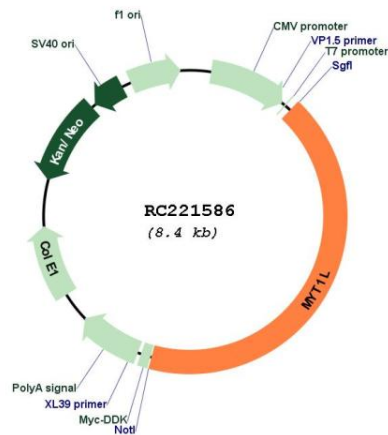
**Cytogenetics:** 2p25.3

**Protein Families:** Transcription Factors

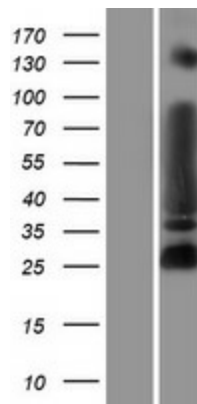
**MW:** 132.7 kDa

**Gene Summary:**

This gene encodes a member of the zinc finger superfamily of transcription factors whose expression, thus far, has been found only in neuronal tissues. The encoded protein belongs to a novel class of cystein-cystein-histidine-cystein zinc finger proteins that function in the developing mammalian central nervous system. Forced expression of this gene in combination with the basic helix-loop-helix transcription factor NeuroD1 and the transcription factors POU class 3 homeobox 2 and achaete-scute family basic helix-loop-helix transcription factor 1 can convert fetal and postnatal human fibroblasts into induced neuronal cells, which are able to generate action potentials. Mutations in this gene have been associated with an autosomal dominant form of cognitive disability and with autism spectrum disorder. Alternative splicing results in multiple variants. [provided by RefSeq, Jul 2017]

**Product images:**


Circular map for RC221586



Western blot validation of overexpression lysate (Cat# [LY414829]) using anti-DDK antibody (Cat# [TA50011-100]). Left: Cell lysates from untransfected HEK293T cells; Right: Cell lysates from HEK293T cells transfected with RC221586 using transfection reagent MegaTran 2.0 (Cat# [TT210002]).