

## Product datasheet for **RC221580**

### **CED6 (GULP1) (NM\_016315) Human Tagged ORF Clone**

#### Product data:

Product Type:	Expression Plasmids
Product Name:	CED6 (GULP1) (NM_016315) Human Tagged ORF Clone
Tag:	Myc-DDK
Symbol:	CED6
Synonyms:	CED-6; CED6; GULP
Mammalian Cell Selection:	Neomycin
Vector:	pCMV6-Entry (PS100001)
E. coli Selection:	Kanamycin (25 ug/mL)
ORF Nucleotide Sequence:	>RC221580 representing NM_016315 Red=Cloning site Blue=ORF Green=Tags(s)

TTTTGTAATACGACTCACTATAGGGCGCCGGGAATTCGTCGACTGGATCCGGTACCGAGGAGATCTGCC  
GCC**CGGATCGCC**

ATGAACCGTGCTTTTAGCAGGAAGAAAGACAAAACATGGATGCATACACCTGAAGCTTTATCAAACATT  
TCATTCCCTATAATGCAAAGTTTCTTGGCAGTACAGAAGTGGAACAGCCAAAAGGAACAGAAGTTGTGAG  
AGATGCTGTAAGGAACTAAAGTTTGAAGACATATCAAGAAATCTGAAGGCCAGAAAATTCCTAAAGTG  
GAGTTGCAAATATCAATTTATGGAGTAAAAATTCTAGAACCCAAAACAAAGGAAGTTCAACACAATTGCC  
AGCTTCATAGAATATCTTTTGTGCAGATGATAAACTGACAAGAGGATATTCACCTTCATATGCAAAGA  
TTCTGAGTCAAATAAACATTTGTGCTATGTATTTGACAGCGAAAAGTGTGCTGAAGAGATCACTTTAACA  
ATTGGCCAAGCATTTGACCTGGCATAACAGAAATTTCTAGAATCAGGAGGAAAAGATGTTGAAAACAAGAA  
AACAGATCGCAGGGTTACAAAAAGAATCCAAGACTTAGAAAACAGAAAATATGGAACCTAAAAATAAAGT  
ACAAGATTTGAAAACCAACTGAGAATAACTCAAGTATCAGCACCTCCAGCAGGCAGTATGACACCTAAG  
TCGCCCTCCACTGACATCTTTGATATGATTCCATTTTCTCCAATATCACACCACTCTTCGATGCCTACTC  
GCAATGGCACACAGCCACCTCCAGTACCTAGTAGACTACTGAGATTAACCGGGACCTGTTTGGAGCAGA  
ACCTTTTGACCCATTTAACTGTGGAGCAGCAGATTTCCCTCCAGATATTCAATCAAATTTAGATGAGATG  
CAGGAGGGGTTCAAATGGGACTAACTCTGAAGGCACAGTATTTGTCTCGACCCGTTAGACAGTAGGT  
GC

**ACGCGT**ACGCGGCCGCTCGAGCAGAAACTCATCTCAGAAGAGGATCTGGCAGCAAATGATATCCTGGATT  
ACAAGGATGACGACGATAAGGTTTAA



[View online »](#)

**Protein Sequence:** >RC221580 representing NM\_016315  
Red=Cloning site Green=Tags(s)

MNRAFSRKKDKTWMHTPEALSKHFIPYNAKFLGSTVEVEQPKGTEVVRDAVRKLFARHIKKSEGQKIPKV  
 ELQISYIGVKILEPKTKEVQHNCQLHRISFCADDKTDKRIFTFICKDSESNKHLCYVFDSEKCAEITLT  
 IGQAFDLAYRKFLESGGKDVETRKQIAGLQKRIQDLETENMELKNKVQDLENQLRITQVSAPPAGSMPK  
 SPSTDIFDMIPFSPI SHQSSMPTRNGTQPPPVP SRSTEIKRDLFGAEPFDFPFCGAADFPPIQSKLDEM  
 QEGFKMGLTLEGTVFCLDPLDSRC

TRTRPLEQKLISEEDLAANDILDYKDDDDKV

**Chromatograms:** [https://cdn.origene.com/chromatograms/ja1503\\_b09.zip](https://cdn.origene.com/chromatograms/ja1503_b09.zip)

**Restriction Sites:** SgfI-MluI

**Cloning Scheme:**



**ACCN:** NM\_016315

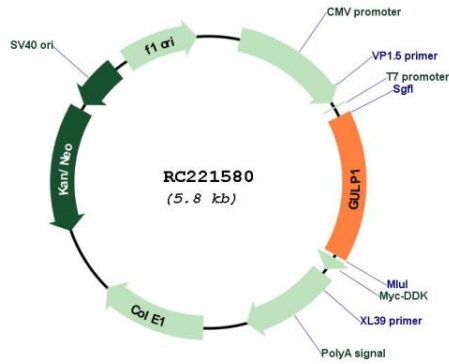
**ORF Size:** 912 bp

**OTI Disclaimer:** Due to the inherent nature of this plasmid, standard methods to replicate additional amounts of DNA in E. coli are highly likely to result in mutations and/or rearrangements. Therefore, OriGene does not guarantee the capability to replicate this plasmid DNA. Additional amounts of DNA can be purchased from OriGene with batch-specific, full-sequence verification at a reduced cost. Please contact our customer care team at [custsupport@origene.com](mailto:custsupport@origene.com) or by calling 301.340.3188 option 3 for pricing and delivery.

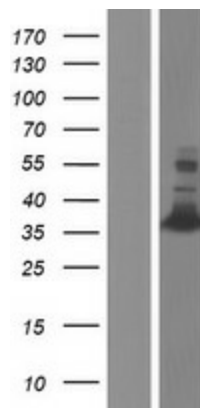
The molecular sequence of this clone aligns with the gene accession number as a point of reference only. However, individual transcript sequences of the same gene can differ through naturally occurring variations (e.g. polymorphisms), each with its own valid existence. This clone is substantially in agreement with the reference, but a complete review of all prevailing variants is recommended prior to use. [More info](#)

<b>OTI Annotation:</b>	This clone was engineered to express the complete ORF with an expression tag. Expression varies depending on the nature of the gene.
<b>Components:</b>	The ORF clone is ion-exchange column purified and shipped in a 2D barcoded Matrix tube containing 10ug of transfection-ready, dried plasmid DNA (reconstitute with 100 ul of water).
<b>Reconstitution Method:</b>	<ol style="list-style-type: none"><li>1. Centrifuge at 5,000xg for 5min.</li><li>2. Carefully open the tube and add 100ul of sterile water to dissolve the DNA.</li><li>3. Close the tube and incubate for 10 minutes at room temperature.</li><li>4. Briefly vortex the tube and then do a quick spin (less than 5000xg) to concentrate the liquid at the bottom.</li><li>5. Store the suspended plasmid at -20°C. The DNA is stable for at least one year from date of shipping when stored at -20°C.</li></ol>
<b>RefSeq:</b>	<u><a href="#">NM_016315.4</a></u>
<b>RefSeq Size:</b>	3464 bp
<b>RefSeq ORF:</b>	915 bp
<b>Locus ID:</b>	51454
<b>UniProt ID:</b>	<u><a href="#">Q9UBP9</a></u>
<b>Cytogenetics:</b>	2q32.1-q32.2
<b>Domains:</b>	PID
<b>Protein Families:</b>	Druggable Genome
<b>MW:</b>	34.3 kDa
<b>Gene Summary:</b>	The protein encoded by this gene is an adapter protein necessary for the engulfment of apoptotic cells by phagocytes. Several transcript variants, some protein coding and some thought not to be protein coding, have been found for this gene. [provided by RefSeq, Nov 2011]

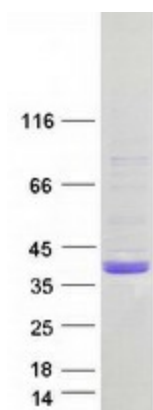
Product images:



Circular map for RC221580



Western blot validation of overexpression lysate (Cat# [LY414050]) using anti-DDK antibody (Cat# [TA50011-100]). Left: Cell lysates from untransfected HEK293T cells; Right: Cell lysates from HEK293T cells transfected with RC221580 using transfection reagent MegaTran 2.0 (Cat# [TT210002]).



Coomassie blue staining of purified GULP1 protein (Cat# [TP321580]). The protein was produced from HEK293T cells transfected with GULP1 cDNA clone (Cat# RC221580) using MegaTran 2.0 (Cat# [TT210002]).