

Product datasheet for **RC221577**

C2CD2 (NM_015500) Human Tagged ORF Clone

Product data:

Product Type:	Expression Plasmids
Product Name:	C2CD2 (NM_015500) Human Tagged ORF Clone
Tag:	Myc-DDK
Symbol:	C2CD2
Synonyms:	C21orf25; C21orf258; TMEM24L
Mammalian Cell Selection:	Neomycin
Vector:	pCMV6-Entry (PS100001)
E. coli Selection:	Kanamycin (25 ug/mL)



[View online »](#)

ORF Nucleotide Sequence:

>RC221577 representing NM_015500
 Red=Cloning site Blue=ORF Green=Tags(s)

TTTTGTAATACGACTCACTATAGGGCGGCCGGAATTCGTCGACTGGATCCGGTACCGAGGAGATCTGCC
 GCC**CGGATCGCC**

ATGGCCATGGCCCGGCTGGGCTCGTGGCTCGGGGAGGCGCAGTGGCTCGCGCTGGTGTCTCTTCGTCG
 CGGCCCTGGCCACGGTAGGCCTGTACCTGGCGCAGTGGGCGCTGGCCAGGGCGCGACCCCAGCCCCAGCG
 CGGGGCGGTGGAGCCTGGAGAGGGGCGCGCCCGGGTCCGACGCGCTGCTCTCCTGGATCCTGACGCTG
 GGCAGCTGGAGGAGCCAGTGGCAGGCGGCTGGGTGACCGCCCTGAACGAGGAGGCCGAGAGGAAAGGGG
 GCCACCTTTCTGCTCTTTGAGGAGGACCCGCGGCAGCAGGCACTGGAGCTGGTGGTGCAGGAGGTCTC
 CAGCGTGTCTCAGGTGGCGGAGGAGAAGGTGGTGGTCTGTACGTGGTGGGCCAGGCTATTCAGTTCTTG
 GTCAGCGAGACGCTGCCTGGGTGCTGGATGCCGGCTGTACGACATGCGGCTCTCCCTTTCCATTTAC
 AGCTGGAGTTCACATGAAGGAGAAGAGAGAGGACCTCCAGATTAGCTGGTCTTTTCATCAGTGTCCCGGA
 AATGGCCGTTAATATCCAGCCCCAAAGCACTGGGGGAGGACCAGGTGGCTGAGACAAGTGCATGTCTGAC
 GTTCTCAAGGACATCTTGAAGCATTGGCTGGTCTGCCTCTCCATCAGTGGTTCGATTACCAAGCCCA
 CGACTGTAAGGAAGCTCAGAACTTACAGTGTGCTGCATCTACTGCTCAGGAATCCTGTCCTCTAAACC
 TCCAAGGGCTCACGAGCTGAAGCTACTGGTGAGGAACATCCACGTCTTGCTGCTCAGCGAGCCCGGTGCC
 TCAGGCCACATTAATGCAGTGTGCGTGTGCGAGCTGAACGATCCTGTTACAGAGTTCCTCAGCACCTGA
 CGAAAAACTCCGACCTCATGTGGGAAGAGGAATTCACCTTCGAGTTGAATGCCAAGTGAAGGAGTT
 ACACCTGCAGATTCAGAGGCTGGGCGATCCTCAGAAGTCTGCTGGCGACGGCGACAGTTCTCTGGAC
 TATTTAAAGAAGCAGCCTTCTGGGCCACAGAGCTTACGCTGACCAGCGGTCTGCTGCGGCAGCTCAG
 TGCTGGGCTCGGTACGGCAGAGTTCTTACATGGAACCTGGTGAATTGAAATCCTGGCCATCCCTCC
 CCCTGTTCTGCTGCAAAAATAGAAAAGGACCGCACGGTATGCCCTGTGGGACTGTGGTCACTACTGTC
 ACTGCTGTGAAGACCAAGCCTCGCGTCGACGTGGGGAGGGCGTCCCCGCTGAGCTCTGATTCTCCGGTGA
 AGACTCCCATCAAGGTGAAGGTGATCGAGAAGGACATCTCTGTCCAGGCCATCGCCTGCCGACGCGCCC
 CGTCAGCAAAACTCTCTTCTCAGACACAGAATTGTTGGTGTGAATGGTTCGGATCCAGTGGCTGAA
 GTGGCCATTTCAGAGCTCAGTGAATCTTCAAAGCTGAACTCAAGTCGCCACGGAAGAAAAGCACTATTA
 TCATATCAGGGATCTCCAAGACCTCACTATCTCAGGACCACGACGCTGCCCTGATGCAGGGCTACACGGC
 CTCTGTGGACAGCACCCACCAGGAGGACCCCCATCCCATCCGGAGAGGGCGGCAGCCTCTGCCCGCCA
 GAGGAAGCCGAGTCAGCCAGGCATCCCTTGCCCCAAGCCCCAGGAGGACGAGCTAGACTCCTGGGACT
 TGGAGAAGGAGCCACAGCCCGGCATGGAGCAGCCAGGTCTGCTGGACCCGACGGTATGAGCTGTC
 AGAGAGCTCCATGAGTGTCTGGAGCCGGCACTGCCAAAAGCATAAAGGAGGAATTCTAAGGAAAGGT
 GCAAAGCTGTTCTTCGCGCGCGGCATCAACAGAAAGACCAGGCATGAGTCAGTCACACAATGACCTTG
 TGTTCTTGAGCAGCCAGAGGTTCCCGGAGGAAAGGCATCACCTCACCAGGATCCTGAACAAGAAGCT
 GCTCTCCAGGCACAGAAACAAGAACACCATGAACGGTGCCCCCGTGGAGCCCTGCACG

ACGCGTACGCGGCGGCTCGAGCAGAACTCATCTCAGAAGAGGATCTGGCAGCAATGATATCCTGGATT
 ACAAGGATGACGACGATAAGGTTTAA

Protein Sequence: >RC221577 representing NM_015500
Red=Cloning site Green=Tags(s)

MAMARLGSWLGEAQWLALVSLFVAALATVGLYLAQWALARARPQPQRAVEPEGEGPRPGSDALLSWILTL
 GSWRSQWQAAWVTALNEEAERKGGPPFLSFEEDPRQALELVVQEVSSVLSAEEKVVVCHVVGQAIQFL
 VSETPALGAGCRLYDMRLSPFHLQLEFHMKEKREDLQISWSFISVPEMAVNIQPKALGEDQVAETSAMSD
 VLKIDILKHLAGSASPSVVLITKPTTVKEAQNLCQAASTAQESCPPKPPRAHELKLLVRNIHVLLLSEPGA
 SGHINAVCVVQLNDPVQRFSSSTLTKNTPDLMWEEFTFELNAKSKELHLQISEAGRSSEGLLATATVPLD
 LFKKQPSGPQSFTLTSGSACGSSVLGSVTAEFSYMPEGELKSWIPPPVPAAKIEKDRTVMPCGTVVTTV
 TAVKTKPRVDVGRASPLSSDSPVKTPIKVKVIEKDISVQAIACRSAPVSKTLSSDTELLVLNGSDPVAE
 VAIRQLSESSKLKLSRKKSTIIISGISKTSLSQDHAALMQGYTASVDSTHQEDAPSHPERAAASAPP
 EEAESAQASLAPKQDELDSDWLEKEPQAAWSSQVLLDPDGDELSESSMSVLEPGTAKKHKGILRKG
 AKLFFRRRHQQKDPGMSQSHNDLVFLEQPEGSRKGITLTRILNKLLSRHRNKNTMNGAPVEPCT

TRTRPLEQKLISEEDLAANDILDYKDDDDKV

Chromatograms: https://cdn.origene.com/chromatograms/mg3564_d09.zip

Restriction Sites: SgfI-MluI

Cloning Scheme:



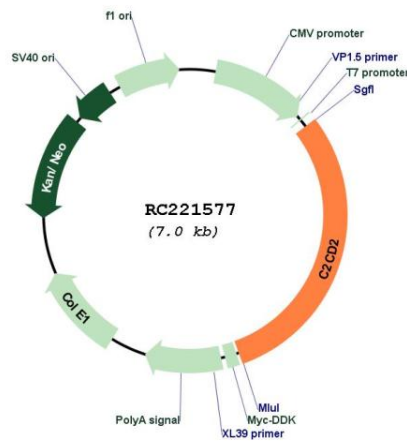
ACCN: NM_015500

ORF Size: 2088 bp

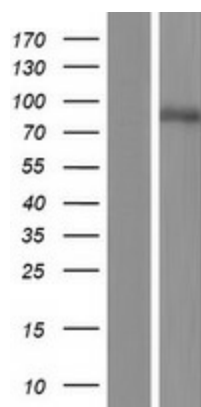
OTI Disclaimer: The molecular sequence of this clone aligns with the gene accession number as a point of reference only. However, individual transcript sequences of the same gene can differ through naturally occurring variations (e.g. polymorphisms), each with its own valid existence. This clone is substantially in agreement with the reference, but a complete review of all prevailing variants is recommended prior to use. [More info](#)

OTI Annotation: This clone was engineered to express the complete ORF with an expression tag. Expression varies depending on the nature of the gene.

Components:	The ORF clone is ion-exchange column purified and shipped in a 2D barcoded Matrix tube containing 10ug of transfection-ready, dried plasmid DNA (reconstitute with 100 ul of water).
Reconstitution Method:	<ol style="list-style-type: none">1. Centrifuge at 5,000xg for 5min.2. Carefully open the tube and add 100ul of sterile water to dissolve the DNA.3. Close the tube and incubate for 10 minutes at room temperature.4. Briefly vortex the tube and then do a quick spin (less than 5000xg) to concentrate the liquid at the bottom.5. Store the suspended plasmid at -20°C. The DNA is stable for at least one year from date of shipping when stored at -20°C.
RefSeq:	NM_015500.1 , NP_056315.1
RefSeq Size:	6349 bp
RefSeq ORF:	2091 bp
Locus ID:	25966
UniProt ID:	Q9Y426
Cytogenetics:	21q22.3
Protein Families:	Transmembrane
MW:	75.4 kDa

Product images:

Circular map for RC221577



Western blot validation of overexpression lysate (Cat# [LY414514]) using anti-DDK antibody (Cat# [TA50011-100]). Left: Cell lysates from untransfected HEK293T cells; Right: Cell lysates from HEK293T cells transfected with RC221577 using transfection reagent MegaTran 2.0 (Cat# [TT210002]).