

Product datasheet for **RC221571**

Ferredoxin Reductase (FDXR) (NM_004110) Human Tagged ORF Clone

Product data:

Product Type:	Expression Plasmids
Product Name:	Ferredoxin Reductase (FDXR) (NM_004110) Human Tagged ORF Clone
Tag:	Myc-DDK
Symbol:	Ferredoxin Reductase
Synonyms:	ADR; ADXR; ANOA
Mammalian Cell Selection:	Neomycin
Vector:	pCMV6-Entry (PS100001)
E. coli Selection:	Kanamycin (25 ug/mL)



[View online »](#)

ORF Nucleotide Sequence:

>RC221571 representing NM_004110
 Red=Cloning site Blue=ORF Green=Tags(s)

TTTTGTAATACGACTCACTATAGGGCGGCCGGGAATTCGTCGACTGGATCCGGTACCGAGGAGATCTGCC
 GCC**CGGATCGCC**

ATGGCTTCGCGCTGCTGGCGCTGGTGGGGCTGGTGGCGTGGCCTCGGACCCGGCTGCCTCCCGCCGGGA
 GCACCCCGAGCTTCTGCCACCATTCTCCACACAGGAGAAGACCCCCAGATCTGTGTGGTGGGCAGTGG
 CCCAGCTGGCTTCTACACGGCCAAACACCTGCTAAAGCACCCCAAGGCCACGTGGACATCTACGAGAAA
 CAGCCTGTGCCCTTGGCCTGGTGGCCTTGGTGTGGCGCTGATCACCCGAGGTGAAGAATGTCATCA
 ACACATTTACCCAGACGGCCATTCTGGCCGCTGTGCCTTCTGGGCAACGTGGAGGTGGCAGGGACGT
 GACGGTGGCGGAGCTGCGGGAGGCTACCACGCTGTGGTGTGAGCTACGGGGCAGAGGACCATCGGGCC
 CTGGAAATTCCTGGTGGAGAGCTGCCAGGTGTGTCTCCGCCGGGCCTTCGTGGCTGGTACAACGGGC
 TTCTGAGAACCCAGGAGCTGGAGCCAGACCTGAGCTGTGACACAGCCGTGATTCTGGGGCAGGGAACT
 GGCTCTGGACGTGGCCGCATCCTACTGACCCACCTGAGCACCTGGAGGCCCTCCTTTTGTGCCAGAGA
 ACGGACATCACGAAGGCAGCCCTGGGTGTACTGAGGCAGAGTTCGAGTGAAGACAGTGTGGCTAGTGGCC
 GCGTGGACCCCTGCAAGTGGCCTTACCATTAAAGGAGCTTCGGGAGATGATTACGTTACCGGGAGCCCG
 GCCATTTTGGATCCTGTGGATTTCTGGGTCTCCAGGACAAGATCAAGGAGTCCCCCGCCGAGGAAG
 CGGCTGACGGAAGTGTGCTTCGAACGGCCACAGAGAAGCCAGGGCCGGCGGAAGCTGCCCGCCAGGCAT
 CGGCCTCCCGTGCCTGGGGCCTCCGCTTTTCCGAAGCCCAAGCAGGTGCTGCCCTCACAGATGGGGC
 GCGGGCAGCAGGTGTCCGCTAGCAGTCACTAGACTGGAGGTGTGATGAGGCCACCCGTGAGTGGCC
 ACGGGAGACATGGAAGACCTCCCTTGTGGGTGCTCAGCAGCATTGGGATAAGAGCCCGCCCTGTCC
 ACCAAGCGTGCCTTTGACTCCAAGCTTGGGGTATCCCAATGTGGAGGGCCGGGTTATGGATGTGCC
 AGGCCTCTACTGCAGCGCTGGGTGAAGAGAGGACCTACAGGTGTCATAGCCACAACCATGACTGACAGC
 TTCTCACCGGCCAGATGCTGCTGCAGGACCTGAAGGCTGGGTTGCTCCCTCTGGCCCCAGGCCTGGCT
 ACGCAGCCATCCAGGCCCTGCTCAGCAGCCGAGGGGTCCGGCCAGTCTCTTTCTCAGACTGGGAGAAGCT
 GGATGCCGAGGAGGTGGCCGGGGCCAGGGCACGGGAAGCCAGGGAGAAGCTGGTGGATCCTCAGGAG
 ATGCTGCGCTCCTGGGCCAC

ACGCGTACGCGGCCGCTCGAGCAGAACTCATCTCAGAAGAGGATCTGGCAGCAAATGATATCCTGGATT
 ACAAGGATGACGACGATAAGGTTTAA

Protein Sequence:

>RC221571 representing NM_004110
 Red=Cloning site Green=Tags(s)

MASRCWRWWGSAWPRTRLPPAGSTPSFCHHFSTQEKTPQICVVGSGPAGFYTAQHLLKHPQAHVDIYEK
 QPVPFGLVRFVAPDHPEVKNVINTFTQTAHSGRCAFVGNVEVGRDVTVPELREAYHAVVLSYGAEDHRA
 LEIPGEELPGVCSARAFVWYNGLPENQLEPDLSCDTAVILGQGNVALDVARILLTPPEHLEALLLCQR
 TDITKAALGVLRSRVKTVWLVGRRGPLQVAFTIKELREMIQLPGARPILDVDFLGLQDKIKEYPRPRK
 RLTELLLRATEKPGPAEAAARQASASRAWGLRFFRSPQQVLPSPDGRRAAGVRLAVTRLEGVDEATRAVP
 TGDMDLPCGLVLSISIGYKSRPVDPSVPFDSKLGVIPNVEGRVMDVPGLYCSGWVKRGPTGVIATMTDS
 FLTGQMLLQDLKAGLLPSGPRPGYAAIQALLSSRGVRPVSFSDWEKLDAAEEVARGQGTGKPREKLVDPQE
 MLRLLGH

TRTRPLEQKLISEEDLAANDILDYKDDDDKV

Chromatograms:

https://cdn.origene.com/chromatograms/mk8063_e06.zip

Restriction Sites:

Sgfl-Mlul

Cloning Scheme:


ACCN: NM_004110

ORF Size: 1491 bp

OTI Disclaimer: The molecular sequence of this clone aligns with the gene accession number as a point of reference only. However, individual transcript sequences of the same gene can differ through naturally occurring variations (e.g. polymorphisms), each with its own valid existence. This clone is substantially in agreement with the reference, but a complete review of all prevailing variants is recommended prior to use. [More info](#)

OTI Annotation: This clone was engineered to express the complete ORF with an expression tag. Expression varies depending on the nature of the gene.

Components: The ORF clone is ion-exchange column purified and shipped in a 2D barcoded Matrix tube containing 10ug of transfection-ready, dried plasmid DNA (reconstitute with 100 ul of water).

- Reconstitution Method:**
1. Centrifuge at 5,000xg for 5min.
 2. Carefully open the tube and add 100ul of sterile water to dissolve the DNA.
 3. Close the tube and incubate for 10 minutes at room temperature.
 4. Briefly vortex the tube and then do a quick spin (less than 5000xg) to concentrate the liquid at the bottom.
 5. Store the suspended plasmid at -20°C. The DNA is stable for at least one year from date of shipping when stored at -20°C.

RefSeq: [NM_004110.4](#)

RefSeq Size: 1838 bp

RefSeq ORF: 1494 bp

Locus ID: 2232

UniProt ID: [P22570](#)

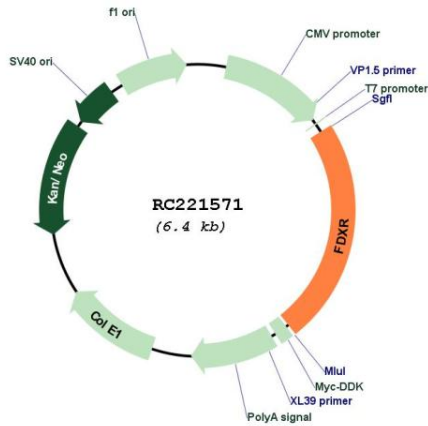
Cytogenetics: 17q25.1

Protein Families: Druggable Genome

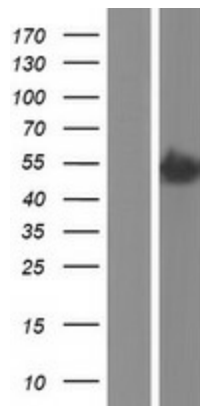
MW: 54.48 kDa

Gene Summary: This gene encodes a mitochondrial flavoprotein that initiates electron transport for cytochromes P450 receiving electrons from NADPH. Multiple alternatively spliced transcript variants have been found for this gene. [provided by RefSeq, Apr 2012]

Product images:



Circular map for RC221571



Western blot validation of overexpression lysate (Cat# [LY418195]) using anti-DDK antibody (Cat# [TA50011-100]). Left: Cell lysates from untransfected HEK293T cells; Right: Cell lysates from HEK293T cells transfected with RC221571 using transfection reagent MegaTran 2.0 (Cat# [TT210002]).