

Product datasheet for **RC221570**

CD20 (MS4A1) (NM_152866) Human Tagged ORF Clone

Product data:

Product Type:	Expression Plasmids
Tag:	Myc-DDK
Symbol:	CD20
Synonyms:	B1; Bp35; CD20; CVID5; FMC7; LEU-16; MS4A2; S7
Mammalian Cell Selection:	Neomycin
Vector:	pCMV6-Entry (PS100001)
E. coli Selection:	Kanamycin (25 ug/mL)
ORF Nucleotide Sequence:	>RC221570 ORF sequence Red=Cloning site Blue=ORF Green=Tags(s)

TTTTGTAATACGACTCACTATAGGGCGGCCGGAATTCGTCGACTGGATCCGGTACCGAGGAGATCTGCC
 GCC**CGATCGCC**

ATGACAACACCCAGAAATTCAGTAAATGGGACTTTCCCGGCAGAGCCAATGAAAGGCCCTATTGCTATGC
 AATCTGGTCCAAAACCACTCTTCAGGAGGATGTCTTCACTGGTGGGCCCCACGCAAAGCTTCTTCATGAG
 GGAATCTAAGACTTTGGGGCTGTCCAGATTATGAATGGGCTCTCCACATTGCCCTGGGGGTCTTCTG
 ATGATCCAGCAGGGATCTATGCACCCATCTGTGTGACTGTGTGGTACCCTCTCTGGGGAGGCATTATGT
 ATATTATTTCCGGATCACTCCTGGCAGCAACGGAGAAAACTCCAGGAAGTGTGGTCAAAGGAAAAAT
 GATAATGAATTCATTGAGCCTCTTTGCTGCCATTCTGGAATGATTCTTTCAATCATGGACATACTTAAT
 ATTAAAAATTTCCATTTTTTAAAAATGGAGAGTCTGAATTTTATTAGAGCTCACACACCATATATTAACA
 TATACAACTGTGAACCAGCTAATCCCTCTGAGAAAACTCCCCATCTACCAATACTGTTACAGCATACA
 ATCTCTGTTCTTGGGCATTTTGTGAGTGATGCTGATCTTTGCCTTCTTCCAGGAATTGTAATAGCTGGC
 ATCGTTGAGAATGAATGGAAAAGAACGTGCTCCAGACCCAAATCTAACATAGTTCTCCTGTCAGCAGAAG
 AAAAAAAGAACAGACTATTGAAATAAAGAAGAAGTGGTTGGGCTAACTGAAACATCTTCCAACCAAA
 GAATGAAGAAGACATTGAAATTATTCCAATCCAAGAAGAGGAAGAAGAAGAAACAGAGACGAACCTTCCA
 GAACCTCCCCAAGATCAGGAATCCTACCAATAGAAAATGACAGCTCTCCT

ACGCGTACGCGGCCGCTCGAGCAGAACTCATCTCAGAAGAGGATCTGGCAGCAAATGATATCCTGGATT
 ACAAGGATGACGACGATAAGGTTTAA


[View online »](#)

Protein Sequence: >RC221570 protein sequence
 Red=Cloning site Green=Tags(s)

MTTPRNSVNGTFPAEPMKGPIAMQSGPKPLFRMSSLVGPTQSFFMRESKTLGAVQIMNGLFHIALGGLL
 MIPAGIYAPICVTWYPLWGGIMYIISGSLAATEKNSRKCLVKGKMIMNSLSLFAAISGMILSIMDILN
 IKISHFLKMESLNFIRAHTPYINIYNCEPANPSEKNSPSTQYCYSIQSLFLGILSVMLIFAFFQELVIAG
 IVENEWKRTCSPKSNIVLLSAEEKKEQTIEIKEEVVGLTETSSQPKNEEDIEIPIQEEEEETETNFP
 EPPQDQESSPIENDSSP

TRTRPLEQKLISEEDLAANDILDYKDDDDKV

Chromatograms: https://cdn.origene.com/chromatograms/mk6404_e12.zip

Restriction Sites: SgfI-MluI

Cloning Scheme:



ACCN: NM_152866

ORF Size: 891 bp

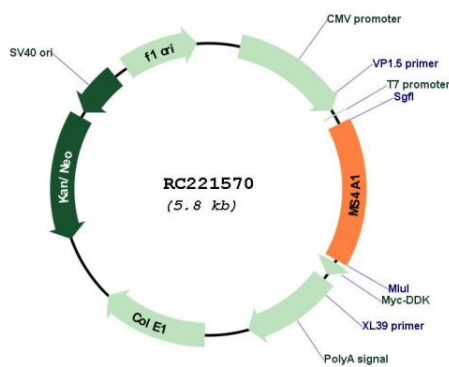
OTI Disclaimer: The molecular sequence of this clone aligns with the gene accession number as a point of reference only. However, individual transcript sequences of the same gene can differ through naturally occurring variations (e.g. polymorphisms), each with its own valid existence. This clone is substantially in agreement with the reference, but a complete review of all prevailing variants is recommended prior to use. [More info](#)

OTI Annotation: This clone was engineered to express the complete ORF with an expression tag. Expression varies depending on the nature of the gene.

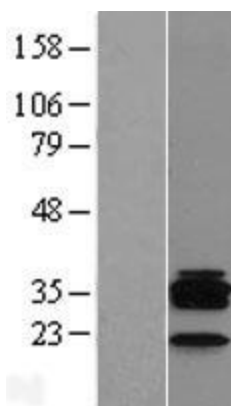
Components: The ORF clone is ion-exchange column purified and shipped in a 2D barcoded Matrix tube containing 10ug of transfection-ready, dried plasmid DNA (reconstitute with 100 ul of water).

Reconstitution Method:	<ol style="list-style-type: none"> 1. Centrifuge at 5,000xg for 5min. 2. Carefully open the tube and add 100ul of sterile water to dissolve the DNA. 3. Close the tube and incubate for 10 minutes at room temperature. 4. Briefly vortex the tube and then do a quick spin (less than 5000xg) to concentrate the liquid at the bottom. 5. Store the suspended plasmid at -20°C. The DNA is stable for at least one year from date of shipping when stored at -20°C.
Note:	Plasmids are not sterile. For experiments where strict sterility is required, filtration with 0.22um filter is required.
RefSeq:	<u>NM_152866.3</u>
RefSeq Size:	3594 bp
RefSeq ORF:	894 bp
Locus ID:	931
UniProt ID:	<u>P11836</u>
Cytogenetics:	11q12.2
Domains:	CD20
Protein Families:	Druggable Genome, Transmembrane
Protein Pathways:	Hematopoietic cell lineage
MW:	33.1 kDa
Gene Summary:	<p>This gene encodes a member of the membrane-spanning 4A gene family. Members of this nascent protein family are characterized by common structural features and similar intron/exon splice boundaries and display unique expression patterns among hematopoietic cells and nonlymphoid tissues. This gene encodes a B-lymphocyte surface molecule which plays a role in the development and differentiation of B-cells into plasma cells. This family member is localized to 11q12, among a cluster of family members. Alternative splicing of this gene results in two transcript variants which encode the same protein. [provided by RefSeq, Jul 2008]</p>

Product images:



Circular map for RC221570



Western blot validation of overexpression lysate (Cat# [LY407182]) using anti-DDK antibody (Cat# [TA50011-100]). Left: Cell lysates from untransfected HEK293T cells; Right: Cell lysates from HEK293T cells transfected with RC221570 using transfection reagent MegaTran 2.0 (Cat# [TT210002]).