

Product datasheet for RC221563

LRR55 (NM_001005210) Human Tagged ORF Clone

Product data:

Product Type:	Expression Plasmids
Product Name:	LRR55 (NM_001005210) Human Tagged ORF Clone
Tag:	Myc-DDK
Symbol:	LRR55
Mammalian Cell Selection:	Neomycin
Vector:	pCMV6-Entry (PS100001)
E. coli Selection:	Kanamycin (25 ug/mL)
ORF Nucleotide Sequence:	>RC221563 representing NM_001005210 Red=Cloning site Blue=ORF Green=Tags(s)

TTTTGTAATACGACTCACTATAGGGCGGCCGGAATTCGTCGACTGGATCCGGTACCGAGGAGATCTGCC
GCC**CGATCGCC**

ATGCTCAGAAGCCCCACCTTCACAGACGCTGGCCCCAGATGTAGCTGCCTTCTGTGCACAGACTCTCG
ATTCCATGGACACAGTCTCATGGGCTCCCTCCAGCACTGCTGTTGCCTGCTGCCTAAGATGGGTGACAC
TTGGGCCAGCTTCCCTGGCCCGGGCCACCCACCCAGCAATGCTGCTGATCTCCCTCCTTTGGCAGCC
GGGTTGATGCACCTCGGATGCCGGCACCAGCTGCCCGTCCTTTGCACATGCCGTAACCAGGTGGTGGATT
GTAGCAGCCAGCGGCTATTCTCCGTGCCCCAGACCTGCCAATGGACACCCGAAACCTCAGCTGGCCCA
CAACCGCATCACAGCAGTGCCGCTGGCTACCTCACATGCTACATGGAGCTCCAGGTGCTGGATTTGCAC
AACAACTCCTTAATGGAGCTGCCCGGGCCTTCTCTCCATGCCAAGCGCTTGGCACACTTGGACCTGA
GCTACAACAATTTAGCCATGTGCCAGCCGACATGTTCCAGGAGGCCATGGGCTAGTCCACATCGACCT
GAGCCACAACCCCTGGCTGCGGAGGGTGCATCCCCAGGCCTTTCAGGGCCTCATGCAGCTCCGAGACCTG
GACCTCAGTTATGGGGCCTGGCCTTCTCAGCCTGGAGGCTCTTGAGGGCCTACCGGGCTGGTGACCC
TGCAGATCGGTGGCAATCCCTGGGTGTGGCTGCACCATGGAACCCCTGCTGAAGTGGTGCAGAAACCG
GATCCAGCGCTGTACAGCAGATTCTCAGCTGGCTGAGTGCCGGGGCCCTCCTGAAGTCGAGGGCGCCCCG
CTTTCTCACTCACTGAGGAGAGCTTCAAGGCCTGCCACCTGACCCTGACCCTGGATGATTACCTATTCA
TTGCGTTCGTGGGCTTCGTGGTCTCCATTGCTTCTGTGGCCACCAACTTCTCCTGGGCATCACTGCCAA
CTGCTGCCACCGCTGGAGCAAGGCCAGTGAAGAGGAAGAGATC

ACGCGTACGCGGCCGCTCGAGCAGAACTCATCTCAGAAGAGGATCTGGCAGCAAATGATATCCTGGATT
ACAAGGATGACGACGATAAGGTTTAA



[View online »](#)

Protein Sequence: >RC221563 representing NM_001005210
Red=Cloning site Green=Tags(s)

```
MLRSPFTDAGPRCSCLPVSQTLDSMDTVLMGSLQHCCCLLPKMGDTWAQLPWPGPHPAMLLISLLAA
GLMHS DAGTSCPVLCTCRNQVDCSSQRLF SVPPDLPMDTRNLSLAHNRI TAVPPGYLTCY MELQVLDLH
NNSLMELPRGLFLHAKRLAHLDL SYN NF SHVPADM FQE AHGLVHIDL SHNPWLR RVHPQAFQGLMQLRDL
DLSYGG LAFLSLEALEGLPGLVTLQIGGNPWVCGCTMEPLLKWLNRRIQRCTADSQLAECRGPPEVEGAP
L FSLTEESFKACHLTLTDDYLF IAFVGFV VSIASVATN FLLGITAN CCHRWSKASEEEEI
```

TRTRPLEQKLISEEDLAANDILDYKDDDDKV

Chromatograms: https://cdn.origene.com/chromatograms/mk8003_d07.zip

Restriction Sites: Sgfl-MluI

Cloning Scheme:

Cloning sites used for ORF Shuttling:



* The last codon before the Stop codon of the ORF

ACCN: NM_001005210

ORF Size: 1023 bp

OTI Disclaimer: The molecular sequence of this clone aligns with the gene accession number as a point of reference only. However, individual transcript sequences of the same gene can differ through naturally occurring variations (e.g. polymorphisms), each with its own valid existence. This clone is substantially in agreement with the reference, but a complete review of all prevailing variants is recommended prior to use. [More info](#)

OTI Annotation: This clone was engineered to express the complete ORF with an expression tag. Expression varies depending on the nature of the gene.

Components: The ORF clone is ion-exchange column purified and shipped in a 2D barcoded Matrix tube containing 10ug of transfection-ready, dried plasmid DNA (reconstitute with 100 ul of water).

Reconstitution Method:

1. Centrifuge at 5,000xg for 5min.
2. Carefully open the tube and add 100ul of sterile water to dissolve the DNA.
3. Close the tube and incubate for 10 minutes at room temperature.
4. Briefly vortex the tube and then do a quick spin (less than 5000xg) to concentrate the liquid at the bottom.
5. Store the suspended plasmid at -20°C. The DNA is stable for at least one year from date of shipping when stored at -20°C.

RefSeq: [NM_001005210.2](#), [NP_001005210.1](#)

RefSeq Size: 3797 bp

RefSeq ORF: 897 bp

Locus ID: 219527

UniProt ID: [Q6ZSA7](#)

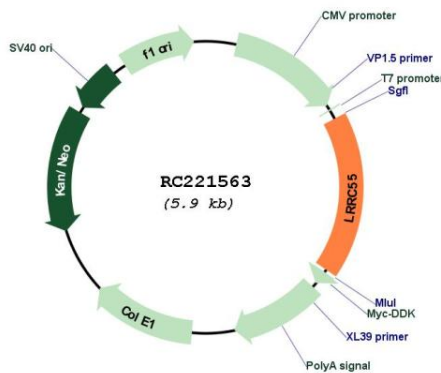
Cytogenetics: 11q12.1

Protein Families: Transmembrane

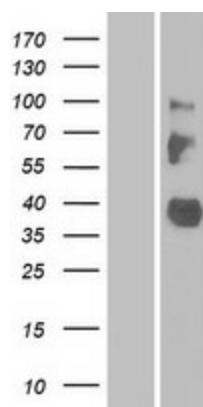
MW: 37.5 kDa

Gene Summary: Auxiliary protein of the large-conductance, voltage and calcium-activated potassium channel (BK alpha). Modulates gating properties by producing a marked shift in the BK channel's voltage dependence of activation in the hyperpolarizing direction, and in the absence of calcium.[UniProtKB/Swiss-Prot Function]

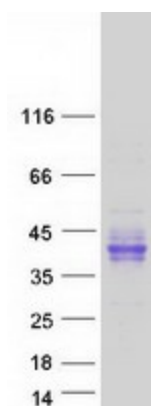
Product images:



Circular map for RC221563



Western blot validation of overexpression lysate (Cat# [LY423802]) using anti-DDK antibody (Cat# [TA50011-100]). Left: Cell lysates from untransfected HEK293T cells; Right: Cell lysates from HEK293T cells transfected with RC221563 using transfection reagent MegaTran 2.0 (Cat# [TT210002]).



Coomassie blue staining of purified LRRC55 protein (Cat# [TP321563]). The protein was produced from HEK293T cells transfected with LRRC55 cDNA clone (Cat# RC221563) using MegaTran 2.0 (Cat# [TT210002]).