

Product datasheet for RC221559

ZSWIM5 (NM_020883) Human Tagged ORF Clone

Product data:

Product Type:	Expression Plasmids
Product Name:	ZSWIM5 (NM_020883) Human Tagged ORF Clone
Tag:	Myc-DDK
Symbol:	ZSWIM5
Mammalian Cell Selection:	Neomycin
Vector:	pCMV6-Entry (PS100001)
E. coli Selection:	Kanamycin (25 ug/mL)
ORF Nucleotide Sequence:	>RC221559 representing NM_020883 Red=Cloning site Blue=ORF Green=Tags(s)

TTTTGTAATACGACTCACTATAGGGCGGCCGGAATTCGTCGACTGGATCCGGTACCGAGGAGATCTGCC
GCCCGATCGCC

ATGGCGGACGGAGGTGAGCGAGAGGAGCTGCTCTCGCCGTACCCGGTCTCTCCGGCTAAGCGGCAGTGTT
CGTGGCCAGCCCGCAGGCTCATCACCCTCGCGGTTCCGCTGGGGCAGCCGGCGGAGGGGCGAGGGGGCGT
CGGCAGCAGCTGCCTGGTCTCGGGGCCGCCCCACCTGCAGCCGGATTCCTTACTGGACTGCGCCGCC
AAGACGGTGGCGAAAAGTGGGCATACGAACGGGTGGAGGAGCGCTTCGAGCGGATCCCGGAGCCCGTGC
AGCGCCGCATCGTCTACTGGTCTTCCCGCGAATGAGCGGGAGATCTGCATGTACTCCAGTTCACAGTA
CCGGGGCGGCCCGCGCGCGCGCTGCTGGCGGCGCCGCGGGGGCTTCGCGGCCGAGGAGGGGCCGCGAG
CCACCCCGGGGCCCGCTCCGGCCGGTCCGCCCGGGGGCGTCGCGGCTGGGGCATCCCCGGGC
TGGGCGCAGGGGCCGCGCGCCGGTGCGGTGGCGAGGGGCTCCCGTTCGCGGGGCATCCGTCTGCT
GGACAGCGGCTCCGTGGAGAAGTGTGCAAGTCGGCTTTCATCTGAGTGGCACAGTAAGTGAAGTGGCC
ACTGCCTCTGAACCAGCAGTGACTTATAAAGTTGCAATCAGTTTTGATCGATGCAAAATCACCTCAGTGA
CATGTGGCTGTGGGAACAAGGACATATTCTACTGTGCCCATGTGGTAGCACTCTCACTCTACAGGATCCG
TAAACCAGACCAAGTCAAATTGCGTCTTCTATCTCCGAAACCTTTTCCAGATGAATAGGGACCAGCTA
CAAAAGTTTATTCAATATTTAATCACGGCACACCACACTGAAGTCTTCTACTGCACAGAAACTGGCAG
ATGAGATTCTATCCTCAACTCAGAAATCAACCAAGTGAATGGTGCCCTGACCCACAGCTGGGGCCAG
CATTGACGATGAGAACTGTTGGCATTGGATGAAGAACAGGTGAAAGAACAAGTGAAGCTTTTTCTCTCC
CAGGGCGGTTACTGTGGCTCTGGAAGCAACTCAACTCAATGTTTGCCAAGGTTCCGAGAAATGCTGCGGA
TGAGAGATTCCAATGGAGCAAGGATGCTGACACTAATAACTGAGCAGTTTGTGGCTGACCCACGACTCAC
ACTCTGGAGGCAGCAAGGAACAACATGACAGACAAGTGCAGGCAGCTCTGGGATGAGCTAGGGGCTTTA
TGGGTGTGCATAATTTAAATCCACACTGCAAAGTGGAGGAGAAATCCTGCTGGCTGCAGCAGCTGCAGA
AGTGGAGCGACCTGGATGTCTGTCCCCTGGAGGATGAAACTATGGACATGAGCTGCCAACATCACCAA
TGCATTCCCCAGAGTGCCATTACAGCCAGACTCCTTATCCAGACCAAGACGAACAGTATTCACTAGA
GCCATTGAGGGCGTGAATTACATTGGCAGGATAGCCACCTACAGCGAATAATCAGCAGTGTATTATA
CAGCTCTGCCTGCCAGCGGAAAGTGAAGACTACTCTTAATTCCAAGGCCAGCCACTGTGGCTTGA



[View online »](#)

GCATGTGCCTACAGCCTGTGCTCGAGTTGACGCCCTGCGTTCCCATGGTTATCCAAAAGAGGCCCTCAGA
CTCACAGTGGCCATTATTAATACTCTGAGGTTGCAGCAGCAGCGGCAACTGGAATCTACAAGCATCAGA
AGAAAGAACTGTTGCAGAGAGGAACCACAACCATCACAAACCTGGAGGGCTGGGTGGGCCACCCCTGGA
TCCCATCGACTGCCTGTTTCTACTTTGACTGAGGCCTGCCGCCTGAATGATGATGGCTATCTGGAGATG
TCAGATATGAATGAAAGCAGACCCCTGTGTACCAGCATGTACCTGTGGCTGCAGGCTCCCCAACAGCA
GTGAGTCTACCTGTATTGGCCTGGAAGTTGCACTGATGGCCTGGTCAACAGAGGTTAATGCCTGA
AGGCCTCTACGCACAGGACAAGGTATGCCGTAATGAGGAGCAGCTCCTGAGCCAACCTCAAGAGCTGCAG
CTGGACGATGAGCTAGTGCAAACACTGCAAAAACAATGCATCTTACTGCTGGAAGGAGGTCTTTACAGCG
GTCTGGGAGAAGTCATCCACCGAGAGAGTGTCCCATGCATACCTTTGCCAAGTATTTGTTCTCAGCTCT
GCTGCCTCATGATCCAGACCTGTCTATAAATTAGCCTTACGTGCCATGAGGTTACCTGTTTTAGAAAAAC
TCAGTCTTGCAGGCGACACATCCCACCCTCACCATATGGTGTCTGTGGTGCCAGCCGTTATCCTCGCT
GGTTCACGCTTGGACACTTGAATCACAGCAGTGTGAACCTGCCCTCCACCATGCTGACTGCTGCCAAGG
AGACACTTTGAGACTCCGAACAATTCTGGAAGCAATACAGAAGCACATTCATTCTTCTCCCTCATCTTC
AAACTGGCCCAAGATGCATTCAAGATTGCTACTCCCACCGACAGTAGTACTGACAGCACCCTGCTCAACG
TTGCCCTGGAACCTGGGTTACAGGTGATGCGGATGACCTTATCAACCCTTAACTGGAGACGCAGGGAGAT
GGTACGATGGTTGGTACCTGTGCTACAGAAGTGGGTGTGCGGGCCCTGGTGAGCATCTTGACAGCTGG
TACACACTCTTACCCCTACTGAGGCTACTAGTATTGTAGCTGCCACAGCCGATCCCACACCCTATCC
TGCGCCTCAGTCTTACTATCCACAGCGGGAGGAACTGGCTAGCTGTGCTCGCACACTGGCTCTACAGTG
TGCTATGAAGGATCCACAGAGCTGTGCCCTGTCAGCCCTTACACTCTGTGAGAAAGACCACATTGCCTTT
GAGGCAGCCTACCAGATTGCCATTGATGCTGCTGCTGGTGGTATGACCCATTACAGCTGTTCCACCATCG
CCCGCTACATGGAGCTCCGTGGCTACCCGCTACGTGCCTTCAAGCTGGCCTCATTGGCCATGAGCCATCT
TAACTGGCCTACAACCAGGATACTCACCAGCCATCAATGATGTGCTCTGGGCTTGTGCTCTCAGCCAC
TCTCTGGGCAAGAATGAGCTGGCAGCTCTCATCCCCCTGGTGGTGAAGAGTGTGCATGTGCCACAGTGC
TTTCAGACATCTTACGACGCTGCACAGTACTGCACCTGGCCTGGCCGGCATCCCAGGCCCGGAAGCTC
TGGAAAGCTCATGTCCACTGACAAAGCTCCATTGCGCCAGTTGCTGGATGCCACCATCAATGCCTATATC
AACACTACACACTCAGCCTAACACACATCAGCCCTCGCCACTATGGAGAGTTTATTGAGTTTCTAAGCA
AGGCTCGGAGACCTTCTGCTGCCCCAGGATGGCCACCTGCAGTTTGGCCAGTTCATCGACAACCTCAA
ACAGATCTACAAAGGCAAGAAAAAGTTGATGCTGCTGGTGCAGAGCGCTTTGGC

ACGGTACGCGGCCGCTCGAGCAGAACTCATCTCAGAAGAGGATCTGGCAGCAATGATATCTGGATT
ACAAGGATGACGACGATAAGGTTTAA

Protein Sequence: >RC221559 representing NM_020883
 Red=Cloning site Green=Tags(s)

```
MADGGEREELLSPSPVSPAKRQCSWSPQAHHPRGSPGAAGGGAGGVGSSCLVLGARPHLQPDSSLDCAA
KTVAEKWAYERVEERFERIPEPVQRRIVYWSFPRNEREICMYSSFQYRGGPGAGAAGGAAGASPAEEGPQ
PPPGAAAPAGSAPGGVAAGASPGLGAGAGAAGCGGEGLPFRRGIRLLDSGSVENVLQVGFHLSGTVELA
TASEPAVTYKVAISFDRCKITSVTCGCGNKFIFYCAHVVALSLYRIRKPDQVKLRLPISSETLFQMNDRQL
QKFIQYLITAHHTVELPTAQKLADEILSSNSEINQVNGAPDPTAGASIDDENCWHLDEEQVKEQVKLFLS
QGGYCGSGKQLNSMFAKVREMLRMRDSNGARMLTLITEQFVADPRLTLWRQQGTNMTDKCRQLWDELGAL
WVCIIINPHCKLEEKSCWLQQLQKWSLDLVCPLDGNYGHELPNITNALPQSAIHSPPSLSRPRRTVFTFR
AIEGRELHWQDShLQRIISSDVYTAPACQRESERLLFNSQGQPLWLEHVPTACARVDALRSHGYPKEALR
LTVAIINTLRLQQQRQLEIYKHQKKELLQRGTTTTITNLEGWVGHPLDPIDCLFLTLTEACRLNDDGYLEM
SDMNESRPPVYQHVPVAAGSPNSSESYLSLAEVALMGLGQQLMPEGLYAQDKVCRNEEQLLSQLQELQ
LDDELVQTLQKQCILLLEGGPFGSLGEVIHRESVPMHTFAKYLFALLPHDPDSYKLALRAMRPLVLEN
SASAGDTSHPHHMVSVPVSRYPWF TLGHLESQQCELASTMLTAAKGDTLRLRTILEAIIQKHIHSSSLIF
KLAQDAFKIATPTDSSTSTLLNVALELGLQVMRMTLSTLNWRRREMVRWLVTCAVEVGVRALVSI LQSW
YTLFTPTEATSIVAATAVSHHTILRLSLDYPQREELASCARTLALQCAMKDPQSCALSALTLCEKDHI AF
EAAYQIAIDAAAGGMTHSQLFTIARYMELRGYPLRAFKLASLMSHLNLAYNQDTHPAINDVLWACALSH
SLGKNELAAALIPLVVKSVCATVLSIDLRRCTVTAPLAGIPGRRSSGKLMSTDKAPLRQLLDATINAYI
NTTHSRLTHISPRHYGEFIEFLSKARETFLLPQDGLQFAQFIDNLKQIYKGGKLLMLLVRERFG
```

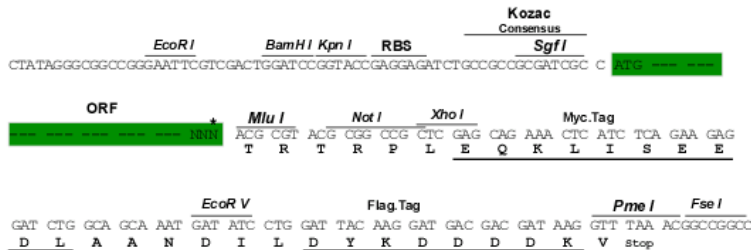
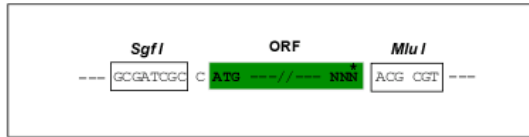
TRTRPLEQKLI SEEDLAANDILDYKDDDDKV

Chromatograms: https://cdn.origene.com/chromatograms/mk8042_f08.zip

Restriction Sites: SgfI-MluI

Cloning Scheme:

Cloning sites used for ORF Shuttling:



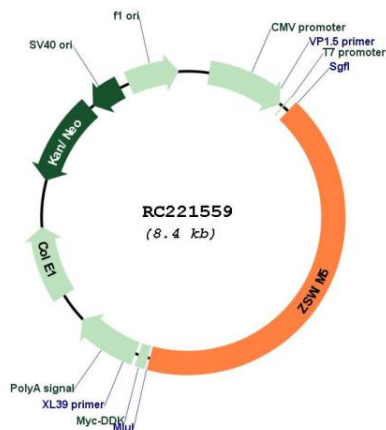
* The last codon before the Stop codon of the ORF

ACCN: NM_020883

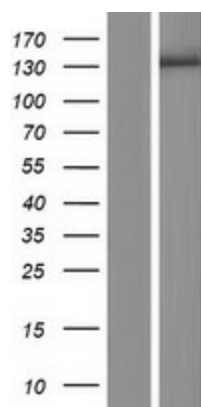
ORF Size: 3555 bp

OTI Disclaimer:	The molecular sequence of this clone aligns with the gene accession number as a point of reference only. However, individual transcript sequences of the same gene can differ through naturally occurring variations (e.g. polymorphisms), each with its own valid existence. This clone is substantially in agreement with the reference, but a complete review of all prevailing variants is recommended prior to use. More info
OTI Annotation:	This clone was engineered to express the complete ORF with an expression tag. Expression varies depending on the nature of the gene.
Components:	The ORF clone is ion-exchange column purified and shipped in a 2D barcoded Matrix tube containing 10ug of transfection-ready, dried plasmid DNA (reconstitute with 100 ul of water).
Reconstitution Method:	<ol style="list-style-type: none"> 1. Centrifuge at 5,000xg for 5min. 2. Carefully open the tube and add 100ul of sterile water to dissolve the DNA. 3. Close the tube and incubate for 10 minutes at room temperature. 4. Briefly vortex the tube and then do a quick spin (less than 5000xg) to concentrate the liquid at the bottom. 5. Store the suspended plasmid at -20°C. The DNA is stable for at least one year from date of shipping when stored at -20°C.
RefSeq:	<u>NM_020883.2</u>
RefSeq Size:	5860 bp
RefSeq ORF:	3558 bp
Locus ID:	57643
UniProt ID:	<u>Q9P217</u>
Cytogenetics:	1p34.1
MW:	130.5 kDa

Product images:



Circular map for RC221559



Western blot validation of overexpression lysate (Cat# [LY412245]) using anti-DDK antibody (Cat# [TA50011-100]). Left: Cell lysates from untransfected HEK293T cells; Right: Cell lysates from HEK293T cells transfected with RC221559 using transfection reagent MegaTran 2.0 (Cat# [TT210002]).