

## Product datasheet for RC221551

### CTRP2 (C1QTNF2) (NM\_031908) Human Tagged ORF Clone

#### Product data:

Product Type:	Expression Plasmids
Product Name:	CTRP2 (C1QTNF2) (NM_031908) Human Tagged ORF Clone
Tag:	Myc-DDK
Symbol:	CTRP2
Synonyms:	CTRP2; zacrp2
Mammalian Cell Selection:	Neomycin
Vector:	pCMV6-Entry (PS100001)
E. coli Selection:	Kanamycin (25 ug/mL)
ORF Nucleotide Sequence:	>RC221551 representing NM_031908 Red=Cloning site Blue=ORF Green=Tags(s)

TTTTGTAATACGACTCACTATAGGGCGGCCGGAATTCGTCGACTGGATCCGGTACCGAGGAGATCTGCC  
GCC**CGATCGCC**

ATGGGAAACTATGCCTGGGGCCGACGCTCTGCCCGGCTGCTGCCGCTGAGGAAAGCCGGGACGCGGAGC  
CCC GCCGAGAGCTTCTTTGCTCCGGACGCCCTGGACGTGGCGGGCAGCCGCGAGGGTAACCACCATGAT  
CCCCTGGGTGCTCCTGGCCTGTGCCCTCCCTGTGCTGCTGACCCACTGCTTGGCGCCTTTGCTCGCAGG  
GACTTCCGAAAGGCTCCCCTCAACTGGTCTGCAGCCTGCCTGGCCCCAGGGCCACCCGGCCCCCAG  
GAGCCCCAGGGCCCTCAGGAATGATGGGACGAATGGGCTTTCCTGGCAAAGACGGCCAAGATGGACACGA  
CGGCGACCGGGGGACAGCGGAGAGGAAGTCCACCTGGCCGGACAGGTAACCGGGAAAGCCAGGACCA  
AAGGGCAAAGCCGGGGCCATTGGGCGGGCTGGCCCCCGTGGCCCCAAGGGGGTCAACGGTACCCCGGGGA  
AGCATGGCACACCAGGCAAGAAGGGGCCAAGGGCAAGAAAGGGGAGCCAGGCCTCCAGGCCCTCGAG  
CTGTGGCAGTGGCCATACCAAGTCAGCTTCTCGGTGGCAGTGACCAAGAGCTACCCACGGGAGCGGCTG  
CCCATCAAGTTTGACAAGATTCTGATGAACGAGGGTGGCCACTACAATGCTTCCAGCGGCAAGTTCTGCT  
GCGGCGTGCTGGGATCTACTACTTCACCTACGACATCACGCTGGCCAACAAGCACCTGGCCATCGGCCT  
GGTGACAACGGCCAGTACCGCATCCGGACCTTTGATGCCAACACCGGCAACCACGATGTGGCCTCAGGC  
TCCACCATCCTGGCTCTCAAGCAGGGTGACGAAGTTTGGCTGCAGATCTTCTACTCAGAGCAGAACGGGC  
TCTTCTATGACCCTTACTGGACAGACAGCCTTTACGGGCTTCCTAATCTATGCCGACCAGGATGACCC  
CAACGAGGTA

**ACGCGT**ACGCGGCCGCTCGAGCAGAACTCATCTCAGAAGAGGATCTGGCAGCAAATGATATCCTGGATT  
ACAAGGATGACGACGATAAGGTTTAA



[View online »](#)

**Protein Sequence:** >RC221551 representing NM\_031908  
Red=Cloning site Green=Tags(s)

MGKLCLGPTLCPAAAAEESRDAEPRRELLCSGRPWTWRAAARVTTMIPWVLLACALPCAADPLLGFARR  
 DFRKGGSPQLVCSLPGPQPPGPPGAPGPSGMMGRMGFPGKDGQDGHGDRGDSGEEGPPGRTGNRGKPGP  
 KGKAGAI GRAGPRGPKGVNGTPGKHGTPGKKGPKGKKGEPGLPGPCSCGSGHTKSAF SVAVTKSYPRERL  
 PIKFDKILMNEGGHYNASSGKFVCGVPGIYYFTYDITLANKHLAIGLVHNGQYRIRTFDANTGNHDVASG  
 STILALKQGDEVWLQIFYSEQNGLFYDPYWTDSLFTGFLIYADQDDPNEV

TRTRPLEQKLISEEDLAANDILDYKDDDDKV

**Chromatograms:** [https://cdn.origene.com/chromatograms/mk6173\\_a09.zip](https://cdn.origene.com/chromatograms/mk6173_a09.zip)

**Restriction Sites:** SgfI-MluI

**Cloning Scheme:**



**ACCN:** NM\_031908

**ORF Size:** 990 bp

**OTI Disclaimer:** The molecular sequence of this clone aligns with the gene accession number as a point of reference only. However, individual transcript sequences of the same gene can differ through naturally occurring variations (e.g. polymorphisms), each with its own valid existence. This clone is substantially in agreement with the reference, but a complete review of all prevailing variants is recommended prior to use. [More info](#)

**OTI Annotation:** This clone was engineered to express the complete ORF with an expression tag. Expression varies depending on the nature of the gene.

**Components:** The ORF clone is ion-exchange column purified and shipped in a 2D barcoded Matrix tube containing 10ug of transfection-ready, dried plasmid DNA (reconstitute with 100 ul of water).

**Reconstitution Method:**

1. Centrifuge at 5,000xg for 5min.
2. Carefully open the tube and add 100ul of sterile water to dissolve the DNA.
3. Close the tube and incubate for 10 minutes at room temperature.
4. Briefly vortex the tube and then do a quick spin (less than 5000xg) to concentrate the liquid at the bottom.
5. Store the suspended plasmid at -20°C. The DNA is stable for at least one year from date of shipping when stored at -20°C.

**RefSeq:** [NM\\_031908.4](#), [NP\\_114114.2](#)

**RefSeq Size:** 2411 bp

**RefSeq ORF:** 858 bp

**Locus ID:** 114898

**UniProt ID:** [Q9BXJ5](#)

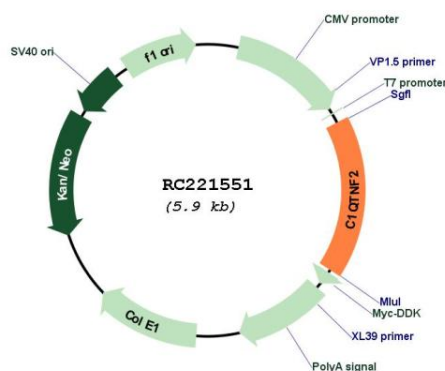
**Cytogenetics:** 5q33.3

**Protein Families:** Secreted Protein

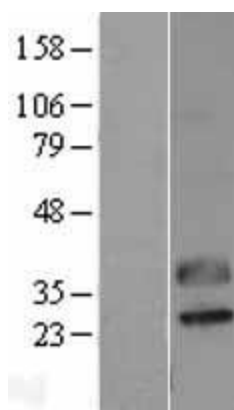
**MW:** 34.7 kDa

**Gene Summary:** Involved in the regulation of lipid metabolism in adipose tissue and liver.[UniProtKB/Swiss-Prot Function]

### Product images:



Circular map for RC221551



Western blot validation of overexpression lysate (Cat# [LY403129]) using anti-DDK antibody (Cat# [TA50011-100]). Left: Cell lysates from untransfected HEK293T cells; Right: Cell lysates from HEK293T cells transfected with RC221551 using transfection reagent MegaTran 2.0 (Cat# [TT210002]).