

Product datasheet for RC221529

LUC7L (NM_201412) Human Tagged ORF Clone

Product data:

Product Type:	Expression Plasmids
Product Name:	LUC7L (NM_201412) Human Tagged ORF Clone
Tag:	Myc-DDK
Symbol:	LUC7L
Synonyms:	hLuc7B1; Luc7; LUC7B1; SR+89
Mammalian Cell Selection:	Neomycin
Vector:	pCMV6-Entry (PS100001)
E. coli Selection:	Kanamycin (25 ug/mL)
ORF Nucleotide Sequence:	>RC221529 representing NM_201412 Red=Cloning site Blue=ORF Green=Tags(s)

TTTTGTAATACGACTCACTATAGGGCGGCCGGAATTCGTCGACTGGATCCGGTACCGAGGAGATCTGCC
GCC**CGATCGCC**

ATGTCGGCCAGGCGCAGATGCGGGCCCTGCTGGACCAGCTCATGGGCACGGCTCGGGACGGAGACGAAA
CCAGACAGAGGGTCAAGTTTACAGATGACCGTGTCTGCAAGAGTACCTTCTGGACTGCTGCCCCATGA
CATCCTGGCTGGACGCGCATGGATTTAGGAGAATGTACCAAAATCCACGACTTGGCCCTCCGAGCAGAT
TATGAGATTGCAAGTAAAGAAAGAGACCTGTTTTTGAATTAGATGCAATGGATCACTTGGAGTCCTTTA
TTGCTGAATGTGATCGGAGAAGTACGCTCGCCAAGAAGCGGCTGGCAGAAACACAGGAGAAATCAGTGC
GGAAGTTTCTGCAAAGGCAGAAAAGTACATGAGTTAAATGAAGAAATAGGAAAACCTCTTGCTAAAGCC
GAACAGCTAGGGGCTGAAGGTAATGTGGATGAATCCCAGAAGATTCTTATGGAAGTGAAAAAGTTCGTG
CGAAGAAAAAGAAGCTGAGGAAGAATACAGAAATCCATGCCTGCATCCAGTTTTTCAGCAGCAAAAGCT
GCGTGTCTGCGAGGTCTGTTTCAGCCTACCTTGGTCTCCATGACAATGACCGTCCGCTGGCAGACCACTTC
GGTGGCAAGTTACACTTGGGGTTCATTCAGATCCGAGAGAAGCTTGATCAGTTGAGGAAAAGTGTGCTG
AAAAGCAGGAGAAGAGAAATCAGGATCGCTTGGAGGAGAGAGGAGAGGGAACGGGAGGAGCGTCTGAG
CAGGAGGTCCGGATCAAGAACCAGAGATCGCAGGAGTACGCTCCCGGATCGGCGTCCGAGGCCGGTCA
AGATCTACCTCCGAGAGCGACGAAATTTGTCGGTCCCGTCCCGAGATAGACATCGGGCCACCCGCA
GCCGTTCCCGGAGCCACAGCCGGGACATCGTCCGGCTTCCCGGACCGAAGTGCAGAAATACAAGTTCTC
CAGAGAGCGGGCATCCAGAGAGGAGTCTTGGGAGAGCGGGCGGAGCGAGCGAGGGCCCCGGACTGGAGG
CTTGAGAGCTCCAACGGGAAGATGGCTTACCGAGGTCAGAAGAGAAGGAGGCCGGCGAGATC

ACGCGTACGCGGCCGCTCGAGCAGAAACTCATCTCAGAAGAGGATCTGGCAGCAATGATATCCTGGATT
ACAAGGATGACGACGATAAGGTTAA



[View online »](#)

Protein Sequence: >RC221529 representing NM_201412
 Red=Cloning site Green=Tags(s)

MSAQAQMRALLDQLMGTARDGDETRQVRVFTDDRVCCKSHLLDCCPHDILAGTRMDLGECTKIHDLLALRAD
 YEIASKERDLFFELDAMDHLESFIAECDRRETELAKKRLAETQEEISAEVSAKAKEVHELNEEIGKLLAKA
 EQLGAEGNVDESQKILMEVEKVRAKKKEAEEYRNSMPASSFQQQKLRVCEVCSAYLGLHDNDRRLADHF
 GGKHLHGF IQIREKLDQLRKTVAEKQEKRNDRLRRREEREREERLSRRSGSRTDRRRRSRDRRRRRRS
 RSTSRRERKLSRSRSDRHRHRSRSHSRGHRRASDRDSAKYKFSRERASREESWESGRSERGPPDWR
 LESSNGKMASRRSEEKEAGEI

TRTRPLEQKLISEEDLAANDILDYKDDDDKV

Chromatograms: https://cdn.origene.com/chromatograms/mk6082_e11.zip

Restriction Sites: SgfI-MluI

Cloning Scheme:



* The last codon before the Stop codon of the ORF

ACCN: NM_201412

ORF Size: 1113 bp

OTI Disclaimer: The molecular sequence of this clone aligns with the gene accession number as a point of reference only. However, individual transcript sequences of the same gene can differ through naturally occurring variations (e.g. polymorphisms), each with its own valid existence. This clone is substantially in agreement with the reference, but a complete review of all prevailing variants is recommended prior to use. [More info](#)

OTI Annotation: This clone was engineered to express the complete ORF with an expression tag. Expression varies depending on the nature of the gene.

Components: The ORF clone is ion-exchange column purified and shipped in a 2D barcoded Matrix tube containing 10ug of transfection-ready, dried plasmid DNA (reconstitute with 100 ul of water).

Reconstitution Method:

1. Centrifuge at 5,000xg for 5min.
2. Carefully open the tube and add 100ul of sterile water to dissolve the DNA.
3. Close the tube and incubate for 10 minutes at room temperature.
4. Briefly vortex the tube and then do a quick spin (less than 5000xg) to concentrate the liquid at the bottom.
5. Store the suspended plasmid at -20°C. The DNA is stable for at least one year from date of shipping when stored at -20°C.

RefSeq: [NM_201412.3](#)

RefSeq Size: 1452 bp

RefSeq ORF: 1116 bp

Locus ID: 55692

UniProt ID: [Q9NQ29](#)

Cytogenetics: 16p13.3

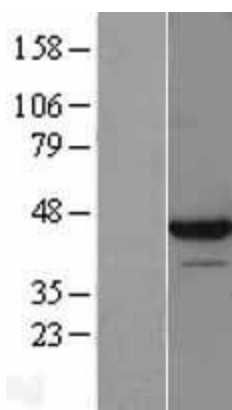
MW: 43.5 kDa

Gene Summary: The LUC7L gene may represent a mammalian heterochromatic gene, encoding a putative RNA-binding protein similar to the yeast Luc7p subunit of the U1 snRNP splicing complex that is normally required for 5-prime splice site selection (Tufarelli et al., 2001 [PubMed 11170747]).[supplied by OMIM, Mar 2008]

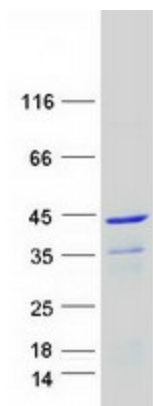
Product images:



Circular map for RC221529



Western blot validation of overexpression lysate (Cat# [LY403707]) using anti-DDK antibody (Cat# [TA50011-100]). Left: Cell lysates from untransfected HEK293T cells; Right: Cell lysates from HEK293T cells transfected with RC221529 using transfection reagent MegaTran 2.0 (Cat# [TT210002]).



Coomassie blue staining of purified LUC7L protein (Cat# [TP321529]). The protein was produced from HEK293T cells transfected with LUC7L cDNA clone (Cat# RC221529) using MegaTran 2.0 (Cat# [TT210002]).