

Product datasheet for **RC221526**

OSBPL9 (NM_148907) Human Tagged ORF Clone

Product data:

Product Type:	Expression Plasmids
Product Name:	OSBPL9 (NM_148907) Human Tagged ORF Clone
Tag:	Myc-DDK
Symbol:	OSBPL9
Synonyms:	ORP-9; ORP9
Mammalian Cell Selection:	Neomycin
Vector:	pCMV6-Entry (PS100001)
E. coli Selection:	Kanamycin (25 ug/mL)



[View online »](#)

ORF Nucleotide Sequence:

>RC221526 representing NM_148907
 Red=Cloning site Blue=ORF Green=Tags(s)

TTTTGTAATACGACTCACTATAGGGCGGCCGGAATTCGTCGACTGGATCCGGTACCGAGGAGATCTGCC
 GCC**CGCATCGCC**

ATGGCTTTCTTGCTGGCCACTTGCGGAGGTTTGGATTGAGATTGTTTCTAGTGTCCAAGATTTTGATA
 AGAACTTACAGAAGCTGATGCTTACCTACAACTTGATTGAACAATTAAGCTTTTTGATGACAAGCT
 TCAAACTGCAAAGAAGATGAACAGAGAAAGAAAATTGAACTCTCAAAGAGACAACAAATAGCATGGTA
 GAATCAATTAACACTGCATTGTGTGCTGAGATTGCCAAAAGTACTATTAATCCCGTAGATGCAATAT
 ATCAACCTAGTCCTTTGGAACCTGTGATCAGCACAATGCCTTCCCAGACTGTGTTACCTCCAGAACCTGT
 TCAGTTGTGTAAGTCAGAGCAGCGTCCATCTTCCCTACCAGTTGGACCTGTGTTGGCTACCTTGGGACAT
 CATCAGACTCCTACACCAATAGTACAGGCAGTGGCCATTCACCACCGAGTAGCAGTCTCACTTCTCCAA
 GCCACGTGAACCTGTCTCCAAATACAGTCCCAGAGTTCTTACTCCAGCAGTGAAGATGAATTTATGA
 TGCTGATGAATCCATCAAAGTGGCTCATCCCCAAAGCGCTTAATAGATTCTTCTGGATCTGCCTCAGTC
 CTGACACACAGCAGCTCGGAAATAGTCTAAAACGCCAGATACCACAGAATCACTTAATTTCTTCTTGT
 CCAATGGAACAAGTGATGCTGACCTGTTTGATTACATGATGACAGAGATGATGATGCGGAGGCAGGGTC
 TGTGGAGGAGCACAAGAGCGTTATCATGCATCTTGTGCGAGGTTAGACTTGGAAATGGATCTTACTAAG
 GTAGTTCTTCAAACGTTTATTCTTGAAGAAGATCTCTTTAGAAATGTATGCAGACTTTTTTGCACATC
 CGGACCTGTTTGTGAGCATTAGTGACCAGAAGGATCCCAAGGATCGAATGGTTCAGGTTGTGAAATGGTA
 CCTCTCAGCCTTTCATGCGGGAAGGAAAGGATCAGTTGCCAAAAGCCATACAATCCCATTTTGGGCGAG
 ATTTTTCAGTGTCAATGGACATTACCAATGATACTGAAGAGAACACAGAAGTTCAGAAAGGACCCAG
 TTCCCTGGGTTTCCAAAACAGTGTAACTTTGTGGCTGAGCAGGTTTCCCATCATCCACCCATTTCCAGC
 CTTTTATGCTGAGTGTTTTAACAAAGAAGATACAATTCAATGCTCATATCTGGACCAATCAAATTCCTT
 GGGATGTCAATGGGGTGCAACAATAGGGCAGGGCTGTGCTCATGTCTAGACTATGATGAACATTACA
 TTCTCACATTCCCAATGGCTATGGAAGGTCTATCCTCACAGTGCCTGGGTGGAATTAGGAGGAGAATG
 CAATATTAATTTGTTCCAAAACAGGCTATAGTGCAAAATATCATCTTCCACACTAAACCCTTCTATGGGGC
 AAGAAGCACAGAATTACTGCCGAGATTTTTCTCCAAATGACAAGAAGTCTTTTTGCTCAATTGAAGGGG
 AATGGAATGGTGTGATGTATGCAAAATATGCAACAGGGGAAAATACAGTCTTTGTAGATACCAAGAAGTT
 GCCTATAATCAAGAAGAAAGTGAGGAAGTTGGAAGATCAGAACGAGTATGAATCCCGCAGCCTTTGGAAG
 GATGTCACCTTCAACTTAAAAATCAGAGACATTGATGCAGCAACTGAAGCAAAGCACAGGCTTGAAGAAA
 GACAAAGAGCAGAAGCCCGAGAAAGGAAGGAGAAGGAAATTCAGTGGGAGACAAGGTTATTTTCATGAAGA
 TGGAGAATGCTGGGTTTATGATGAACCATTACTGAAACGCTTGGTGTGCCAAGCAT

ACGCGTACGCGGCCGCTCGAGCAGAACTCATCTCAGAAGAGGATCTGGCAGCAATGATATCCTGGATT
 ACAAGGATGACGACGATAAGGTTTAA

Protein Sequence:

>RC221526 representing NM_148907
 Red=Cloning site Green=Tags(s)

MAFLLATCGGLDSGFVPSVQDFDKLLEADAYLQILIEQLKLFDDKLQNKCEDEQRKKIETLKETTNSMV
 ESIKHCI VLLQIAKSTINPVD AIYQPSLEPVISTMPSQT VLPPEPVQLCKSEQRPSLPVGPV L ATLGH
 HQTPPTNSTGSGHSPSSSLTSPSHVNLSPNTVPEFSYSSSEDEFYDADEFHQSGSSPKRLIDSSGSASV
 LTHSSGNSLKRPDTTESLNSSLNNGTSDADLFDSDHDDRDDAEAGSVEEHKSVIMHLLSQVRLGMDLTK
 VVLPFTFILERRSLEMYADFFAHPDLFVSI SDQKDPKDRMVQVVKWYLSAFHAGRKGSVAKKPYNPILGE
 IFQCHWTL PNDTEENTELVSEGPVPWVSKNSVTFVAEQVSHHPPISAFYAECFNKKIQFNAHIWTKSKFL
 GMSIGVHNIGQGCVSCLDYDEHYILTFPNYGRSILVTPWVELGGECNINCSKTGYSANIIIFHTKPFYGG
 KKHRTAEI FSPNDKKSFC SIEGEWNGVMYAKYATGENTVFVDTKLP I IKKKVRKLEDQNEYESRSLWK
 DVTFNLKIRDIDAATEAKHRLERQRAEARERKEKEIQWETRLFHEDGECWVYDEPLLKRLGAAKH

TRTRPLEQKLISEEDLAANDILDYKDDDDKV

Chromatograms: https://cdn.origene.com/chromatograms/mg3447_e01.zip

Restriction Sites: SgfI-MluI

Cloning Scheme:



ACCN: NM_148907

ORF Size: 1878 bp

OTI Disclaimer: The molecular sequence of this clone aligns with the gene accession number as a point of reference only. However, individual transcript sequences of the same gene can differ through naturally occurring variations (e.g. polymorphisms), each with its own valid existence. This clone is substantially in agreement with the reference, but a complete review of all prevailing variants is recommended prior to use. [More info](#)

OTI Annotation: This clone was engineered to express the complete ORF with an expression tag. Expression varies depending on the nature of the gene.

Components: The ORF clone is ion-exchange column purified and shipped in a 2D barcoded Matrix tube containing 10ug of transfection-ready, dried plasmid DNA (reconstitute with 100 ul of water).

Reconstitution Method:

1. Centrifuge at 5,000xg for 5min.
2. Carefully open the tube and add 100ul of sterile water to dissolve the DNA.
3. Close the tube and incubate for 10 minutes at room temperature.
4. Briefly vortex the tube and then do a quick spin (less than 5000xg) to concentrate the liquid at the bottom.
5. Store the suspended plasmid at -20°C. The DNA is stable for at least one year from date of shipping when stored at -20°C.

RefSeq: [NM_148907.3](#)

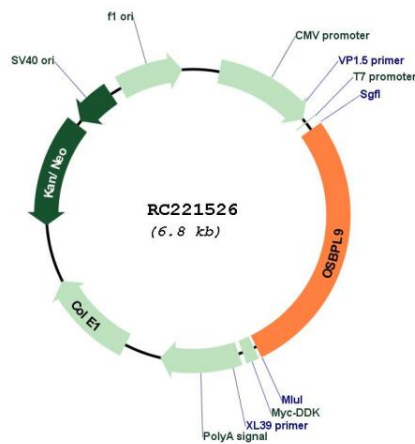
RefSeq Size: 2694 bp

RefSeq ORF: 1881 bp

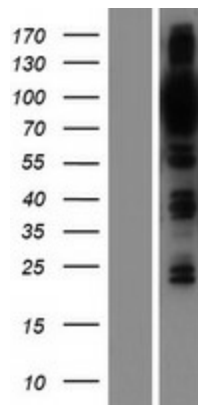
Locus ID: 114883
UniProt ID: [Q96SU4](#)
Cytogenetics: 1p32.3
MW: 70.1 kDa

Gene Summary: This gene encodes a member of the oxysterol-binding protein (OSBP) family, a group of intracellular lipid receptors. Most members contain an N-terminal pleckstrin homology domain and a highly conserved C-terminal OSBP-like sterol-binding domain, although some members contain only the sterol-binding domain. This family member functions as a cholesterol transfer protein that regulates Golgi structure and function. Multiple transcript variants, most of which encode distinct isoforms, have been identified. Related pseudogenes have been identified on chromosomes 3, 11 and 12. [provided by RefSeq, Jul 2010]

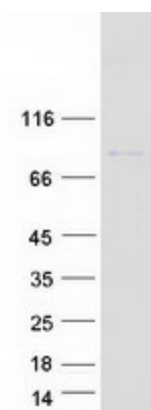
Product images:



Circular map for RC221526



Western blot validation of overexpression lysate (Cat# [LY407763]) using anti-DDK antibody (Cat# [TA50011-100]). Left: Cell lysates from untransfected HEK293T cells; Right: Cell lysates from HEK293T cells transfected with RC221526 using transfection reagent MegaTran 2.0 (Cat# [TT210002]).



Coomassie blue staining of purified OSBPL9 protein (Cat# [TP321526]). The protein was produced from HEK293T cells transfected with OSBPL9 cDNA clone (Cat# RC221526) using MegaTran 2.0 (Cat# [TT210002]).