

## Product datasheet for RC221522

### MRP3 (ABCC3) (NM\_003786) Human Tagged ORF Clone

#### Product data:

Product Type:	Expression Plasmids
Product Name:	MRP3 (ABCC3) (NM_003786) Human Tagged ORF Clone
Tag:	Myc-DDK
Symbol:	MRP3
Synonyms:	ABC31; cMOAT2; EST90757; MLP2; MOAT-D; MRP3
Mammalian Cell Selection:	Neomycin
Vector:	pCMV6-Entry (PS100001)
E. coli Selection:	Kanamycin (25 ug/mL)
ORF Nucleotide Sequence:	>RC221522 representing NM_003786 Red=Cloning site Blue=ORF Green=Tags(s)

TTTTGTAATACGACTCACTATAGGGCGGCCGGAATTCGTCGACTGGATCCGGTACCGAGGAGATCTGCC  
GCC**CGATCGCC**

ATGGACGCCCTGTGCGGTTCCGGGGAGCTCGGCTCCAAGTTCTGGGACTCCAACCTGTCTGTGCACACAG  
AAAACCCGGACCTCACTCCCTGCTTCCAGAACTCCCTGCTGGCCTGGGTGCCCTGCATCTACCTGTGGGT  
CGCCCTGCCCTGCTACTTGCTCTACCTGCGGCACCATTGTCGTGGCTACATCATCCTCTCCACCTGTCC  
AAGCTCAAGATGGTCTGGGTGCTCTGCTGTGGTGCCTCTCTGGGCGGACCTTTTTACTCCTTCCATG  
GCCTGGTCCATGGCCGGGCCCTGCCCTGTTTTCTTTGTCAACCCCTTGGTGGTGGGGGTACCATGCT  
GCTGGCCACCCTGCTGATACAGTATGAGCGGCTGCAGGGCGTACAGTCTTCGGGGGTCTCATTATCTTC  
TGGTTCCTGTGTGGTCTGCGCCATCGTCCCATTCCGCTCCAAGATCCTTTTAGCCAAGGCAGAGGGTG  
AGATCTCAGACCCCTTCCGCTTACCACCTTCTACATCCACTTTGCCCTGGTACTCTCTGCCCTCATCTT  
GGCCTGCTTCAGGGAGAAACCTCCATTTTTCTCCGAAAGAAATGTCGACCCTAACCCCTACCCTGAGACC  
AGCGCTGGCTTTCTCCTCCGCTGTTTTCTGGTGGTTCAAAAGATGGCCATCTATGGTACCGGCATC  
CCCTGGAGGAGAAGGACCTCTGGTCCCTAAAGGAAGAGGACAGATCCCAGATGGTGGTGCAGCAGCTGCT  
GGAGGCATGGAGGAAGCAGGAAAAGCAGACGGCACGACACAAGGTTTCCAGCAGCACCTGGGAAAAATGCC  
TCCGGCAGGACGAGGTGCTGCTGGGTGCCGGCCAGGCCCGGAAGCCCTCTTCTGAAGGCCCTGC  
TGGCCACCTTCGGCTCCAGTTCCTCATCAGTGCCTGCTTCAAGCTTATCCAGGACCTGCTCTCCTTCAT  
CAATCCACAGCTGCTCAGCATCCTGATCAGTTTTATCTCAACCCCATGGCCCTCTCTGGTGGGCTTTC  
CTGGTGGCTGGGCTGATGTTCTGTGCTCCATGATGCAGTCGCTGATCTTACAACACTATTACCACTACA  
TCTTTGTGACTGGGGTGAAGTTTCGTAAGTGGGATCATGGGTGTCATCTACAGGAAGGCTCTGGTTATCAC  
CAACTCAGTCAAACGTGCGTCCACTGTGGGGGAAATTGTCAACCTCATGTCAGTGGATGCCAGCGCTTC  
ATGGACCTTGCCCTTCTCAATCTGCTGTGGTGCAGACCCCTGCAGATCATCTGGCGATCTACTTCC  
TCTGGCAGAACCTAGTCCCTCTGCTGGCTGGAGTCGCTTTCATGGTCTTCTGCTGATTCCACTCAACGG  
AGCTGTGGCCGTGAAGATGCGCGCCTTCCAGGTAAGCAAATGAAATTGAAGACTCGCGCATCAAGCTG



[View online »](#)

ATGAGTGAGATCCTGAACGGCATCAAGGTGCTGAAGCTGTACGCCTGGGAGCCCAGCTTCTGAAGCAGG  
TGGAGGGCATCAGGCAGGGTGAGCTCCAGCTGCTGCGCACGGCGGCTACCTCCACACCACAACCACCTT  
CACCTGGATGTGCAGCCCTTCTGGTGACCCTGATCACCTCTGGGTGTACGTGTACGTGGACCCAAAC  
AATGTGCTGGACGCCGAGAAGGCCTTTGTGTCTGTGCTCTGTTAATATCTTAAGACTTCCCCTCAACA  
TGCTGCCCCAGTTAATCAGCAACCTGACTCAGGCCAGTGTGTCTGAAACGGATCCAGCAATTCTGAG  
CCAAGAGGAACTGACCCCCAGAGTGTGAAAGAAAGACCATCTCCCCAGGCTATGCCATCACCATACAC  
AGTGGCACCTTACCTGGGCCAGGACCTGCCCCCACTCTGCACAGCCTAGACATCCAGGTCCCAGAAAG  
GGGCACCTGGTGGCCGTGGTGGGCCTGTGGGCTGTGGGAAGTCCCTCCCTGGTGTCTGCCCTGCTGGGAGA  
GATGGAGAAGCTAGAAGGCAAAGTGACATGAAGGGCTCCGTGGCCTATGTGCCCCAGCAGGCATGGATC  
CAGAACTGCACTTTCAGGAAAACGTGCTTTTCGGCAAAGCCCTGAACCCCAAGCGCTACCAGCAGACTC  
TGGAGGCCTGTGCCTTGCTAGCTGACCTGGAGATGCTGCCTGGTGGGATCAGACAGAGATTGGAGAGAA  
GGGCATTAACCTGTCTGGGGCCAGCGGCAGCGGGTCACTGTGGCTCGAGCTGTTTACAGTGATGCCGAT  
ATTTTCTGTGGATGACCCACTGTCCGCGGTGGACTCTCATGTGGCCAAGCACATCTTTGACCACGTCA  
TCGGGCCAGAAGGCGTGTGGCAGGCAAGACGCGAGTGTGGTGACGCACGGCATTAGCTTCTGCCCA  
GACAGACTTCATATTGTCTAGCTGATGGACAGGTGTCTGAGATGGGCCGTACCCAGCCCTGCTGCAG  
CGCAACGGCTCCTTTGCCAACTTCTCTGCAACTATGCCCCCGATGAGGACCAAGGGCACCTGGAGGACA  
GCTGGACCGCTTGAAGGTGCAGAGGATAAGGAGGCACTGCTGATTGAAGACACACTCAGCAACCACAC  
GGATCTGACAGACAATGATCCAGTCACTATGTGGTCCAGAAGCAGTTTATGAGACAGCTGAGTGCCTG  
TCCTCAGATGGGAGGGACAGGGTGGCCCTGTACCCCGGAGGCACCTGGGTCCATCAGAGAAGGTGCAGG  
TGACAGAGGCGAAGGCAGATGGGCACTGACCCAGGAGGAGAAAGCAGCCATTGGCACTGTGGAGCTCAG  
TGTGTTCTGGGATTATGCCAAGGCCGTGGGCTCTGTACCACGCTGGCCATCTGTCTCTGTATGTGGGT  
CAAAGTGGGCTGCCATTGGAGCCAATGTGTGGCTCAGTGCCTGGACAAATGATGCCATGGCAGACAGTA  
GACAGACAACACTTCCCTGAGGCTGGGCTCTATGCTGCTTTAGGAATCTGCAAGGGTCTTGGTGAT  
GCTGGCAGCCATGGCCATGGCAGCGGGTGGCATCCAGGCTGCCCGTGTGTTGCACCAGGCACTGCTGCAC  
AACAAGATACGCTCGCCACAGTCTTCTTTGACACCACACCATCAGGCCGCATCCTGAACCTGCTTCTCCA  
AGGACATCTATGTCGTTGATGAGGTTCTGGCCCTGTCATCCTCATGCTGCTCAATTCTTCTTCAACGC  
CATCTCCACTCTTGTGGTCATCATGGCCAGCACGCGCTTCTCACTGTGGTCATCCTGCCCTGGCTGTG  
CTCTACACCTTAGTGCAGCGTCTATGCAGCCACATCACGGCAACTGAAGCGGCTGGAATCAGTCAGCC  
GCTCACCTATCTACTCCACTTTTCGGAGACAGTACTGGTGCCAGTGTGATCCGGCCCTACAACCCGAG  
CCGGGATTTTGTAGATCATCAGTGATACTAAGGTGGATGCCAACCAGAGAAGCTGTACCCCTACATCATC  
TCCAACCGGTGGCTGAGCATCGGAGTGGAGTTCGTGGGAACTGCGTGGTGTCTTTGCTGCACTATTTG  
CCGTATCGGGAGGAGCAGCCTGAACCCGGGGCTGGTGGGCTTTCTGTGCTCTACTCCTTGCAAGGTGAC  
ATTTGCTCTGAACCTGGATGATACGAATGATGTCAGATTTGGAATCTAACATCGTGGCTGTGGAGAGGGTC  
AAGGAGTACTCCAAGACAGAGACAGAGGCGCCCTGGGTGGTGGAAAGGCAGCCGCCCTCCCGAAGGTTGGC  
CCCCACGTGGGAGGTGGAGTTCGGGAATTATTCTGTGCGCTACCGGCCGGGCTAGACCTGGTGTGAG  
AGACCTGAGTCTGCATGTGCACGGTGGCAGAAAGGTGGGATCGTGGCCGCACTGGGGCTGGCAAGTCT  
TCCATGACCTTTGCCTGTTCCGCATCCTGGAGGCGGCAAGGGTGAATCCGCATTGATGGCCTCAATG  
TGGCAGACATCGGCCTCCATGACCTGCGCTCTCAGCTGACCATCATCCCGCAGGACCCCATCCTGTTCTC  
GGGACCTGCGCATGAACCTGGACCCCTTCGGCAGTACTCAGAGGAGGACATTTGGTGGGCTTTGGAG  
CTGTCCACCTGCACACGTTTGTGAGCTCCAGCCGCGCAGGCTGGACTTCCAGTGTCTCAGAGGGCGGGG  
AGAATCTCAGCGTGGGCCAGAGGCACTCGTGTGCTGGCCGAGCCCTGCTCCGCAAGACCCGCATCCT  
GGTTTTAGACGAGGCCACAGCTGCCATCGACCTGGAGACTGACAACCTCATCCAGGCTACCATCCGCACC  
CAGTTTGTACCTGCACTGTCTGACCATCGCACACCGGCTTAACACTATCATGGACTACACCAGGGTCC  
TGGTCTGGACAAAGGAGTAGTAGCTGAATTTGATTCTCCAGCCAACCTCATTGCAGCTAGAGGCATCTT  
CTACGGGATGGCCAGAGATGCTGGACTTGCC

ACGCGTACGCGGCCGCTCGAGCAGAACTCATCTCAGAAGAGGATCTGGCAGCAATGATATCCTGGATT  
ACAAGGATGACGACGATAAGGTTTAA

Protein Sequence: >RC221522 representing NM\_003786  
 Red=Cloning site Green=Tags(s)

MDALCGSGELGSKFWDSNL SVHTENPDL TPCFQNSLLAWVPCIYLWVALPCYLLYL RHHCRGYIILSHLS  
 KLMVGLVLLWCVSWADLFYSFHGLVHGRAPAPVFFVTPLVVGVTMLLATLLIQYERLQGVQSSGVL IIF  
 WFLCVCAIVPFRSKILLAKAEGEISDPFRFTTFYIHFALVLSALILACFREKPPFFSAKNVDPNPYPET  
 SAGFLSRLFFWFTKMAIYGYRHPL EEKDLWSLKEEDRSQM VVQQLLEAWRKQEKQTARHKASAAPGKNA  
 SGEDEVLLGARPRPRKPSFLKALLATFGSSFLISACFKLIQDLLSFINPQLLSILIRFISNPMAPSWWGF  
 LVAGLMFLCSMMQSLILQHYYHYIFVTGVKFRGTGIMGVIYRKALVITNSVKRASTVGEIVNLMSVDAQRF  
 MDLAPFLNLLWSAPLQIILAIYFLWQNLGPSVLGAVAFMVLLIPLNGAVAVKMFRAFQVKQMKLKDSRIKL  
 MSEILNGIKVLKLYAWEPSFLKQVEGIRQGELQLLRTAAYLHTTTTFTWMCSPFLVTLITLWVYVYVDPN  
 NVLDAEKAFVSVSLFNILRPLNMLPQLISNL TQASVSLKRIQQFLS QEELDPQSVERKTISPGYAITIH  
 SGTFTWAQDL PPTLHSLDIQVPGKALVAVVGPVCGKSSLSALLGEMEKEGKVMKGSVAVVPQQAWI  
 QNCTLQENVLFGKALNPKRYQQTLEACALLADLEMLPGGDQTEIGEKGINL SGGQRQRVSLARAVYSDAD  
 IFLLDDPLSAVD SHVAKHIFDHVIGPEGLAGKTRVLVTHGISFLPQTD FIIVLADGQVSEMGYPALLQ  
 RNGSFANFLCNYAPDEDQGHLEDSWTALEGAEDKEALLIEDTL SNHTDLTDNDPVTYVVQKQFMRLSAL  
 SSDGEGQGRPVPRRHLGPSEKVQVTEAKADGAL TQEEKAAIGTVELSVFWDYAKAVGLCTTLAICLLYVG  
 QSAAAIGANVWLSAWTNDAMADSRQNTSLRLGVYAALGILQGFVMLAAMAMAAGGIQAARVLHQALLH  
 NKIRSPQSFFDTPSGRILNCF SKDIYVVDEV LAPVILMLLNSFFNAISTLVVIMASTPLFTVILPLAV  
 LYTLVQRFYAATSRLKRL ESVSRSP IYSHFSETVTGASVIRAYNRSDFEIISDTKVDANQRSCYPYII  
 SNRWLSIGVEFVGNVFLFAALFAVIGRSSLNPLVGLSVSYSLQVTFALNWMIRMMSDLESNIVAVERV  
 KEYSKTE TEAPWVVEGSRPPEGWPPRGEVEFRNYSVRYRPLGLDLVLRDL SLHVHGGEKVGIVGRTGAGKS  
 SMTLCLFRILEAAKGEIRIDGLNVADIGLHDLRSQLTIIPQDPILFSGTLRMNLD PFGSYSEEDIWWALE  
 LSHLHTFVSSQAGLDFQCSEGENLSVGQRQLVCLARALLRKSRI LVLDEATAADLETDNLIQATIRT  
 QFDTCTVLTIAHRLNTIMDYTRVLVLDKGVVAEFDSPANLIAARGIFYGMARDAGLA

TRTRPLEQKLISEEDLAANDILDYKDDDDKV

Chromatograms: [https://cdn.origene.com/chromatograms/mk6259\\_g05.zip](https://cdn.origene.com/chromatograms/mk6259_g05.zip)

Restriction Sites: SgfI-MluI

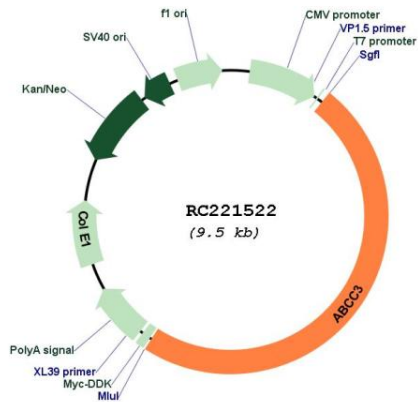
Cloning Scheme:



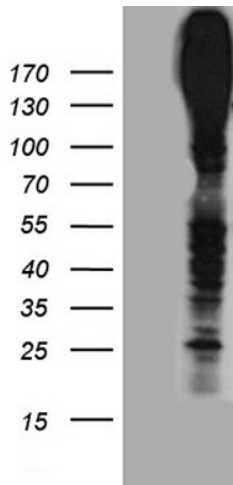
ACCN: NM\_003786

<b>ORF Size:</b>	4581 bp
<b>OTI Disclaimer:</b>	The molecular sequence of this clone aligns with the gene accession number as a point of reference only. However, individual transcript sequences of the same gene can differ through naturally occurring variations (e.g. polymorphisms), each with its own valid existence. This clone is substantially in agreement with the reference, but a complete review of all prevailing variants is recommended prior to use. <a href="#">More info</a>
<b>OTI Annotation:</b>	This clone was engineered to express the complete ORF with an expression tag. Expression varies depending on the nature of the gene.
<b>Components:</b>	The ORF clone is ion-exchange column purified and shipped in a 2D barcoded Matrix tube containing 10ug of transfection-ready, dried plasmid DNA (reconstitute with 100 ul of water).
<b>Reconstitution Method:</b>	<ol style="list-style-type: none"><li>1. Centrifuge at 5,000xg for 5min.</li><li>2. Carefully open the tube and add 100ul of sterile water to dissolve the DNA.</li><li>3. Close the tube and incubate for 10 minutes at room temperature.</li><li>4. Briefly vortex the tube and then do a quick spin (less than 5000xg) to concentrate the liquid at the bottom.</li><li>5. Store the suspended plasmid at -20°C. The DNA is stable for at least one year from date of shipping when stored at -20°C.</li></ol>
<b>Note:</b>	Plasmids are not sterile. For experiments where strict sterility is required, filtration with 0.22um filter is required.
<b>RefSeq:</b>	<a href="#">NM_003786.4</a>
<b>RefSeq Size:</b>	5176 bp
<b>RefSeq ORF:</b>	4584 bp
<b>Locus ID:</b>	8714
<b>UniProt ID:</b>	<a href="#">O15438</a>
<b>Cytogenetics:</b>	17q21.33
<b>Protein Families:</b>	Druggable Genome, Transmembrane
<b>Protein Pathways:</b>	ABC transporters
<b>MW:</b>	169.2 kDa
<b>Gene Summary:</b>	The protein encoded by this gene is a member of the superfamily of ATP-binding cassette (ABC) transporters. ABC proteins transport various molecules across extra- and intra-cellular membranes. ABC genes are divided into seven distinct subfamilies (ABC1, MDR/TAP, MRP, ALD, OABP, GCN20, White). This protein is a member of the MRP subfamily which is involved in multi-drug resistance. The specific function of this protein has not yet been determined; however, this protein may play a role in the transport of biliary and intestinal excretion of organic anions. Alternatively spliced variants which encode different protein isoforms have been described; however, not all variants have been fully characterized. [provided by RefSeq, Jul 2008]

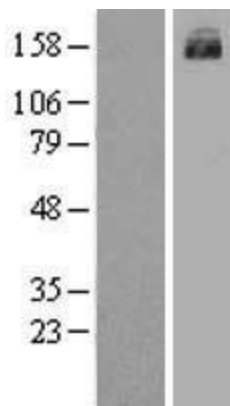
Product images:



Circular map for RC221522



HEK293T cells were transfected with the pCMV6-ENTRY control (Cat# [PS100001], Left lane) or pCMV6-ENTRY ABCC3 (Cat# RC221522, Right lane) cDNA for 48 hrs and lysed. Equivalent amounts of cell lysates (5 ug per lane) were separated by SDS-PAGE and immunoblotted with anti-ABCC3 antibody (Cat# [TA890097]). Positive lysates [LY418434] (100ug) and [LC418434] (20ug) can be purchased separately from OriGene.



Western blot validation of overexpression lysate (Cat# [LY418434]) using anti-DDK antibody (Cat# [TA50011-100]). Left: Cell lysates from untransfected HEK293T cells; Right: Cell lysates from HEK293T cells transfected with RC221522 using transfection reagent MegaTran 2.0 (Cat# [TT210002]).