

## Product datasheet for RC221520

### P2Y6 (P2RY6) (NM\_176798) Human Tagged ORF Clone

#### Product data:

Product Type:	Expression Plasmids
Product Name:	P2Y6 (P2RY6) (NM_176798) Human Tagged ORF Clone
Tag:	Myc-DDK
Symbol:	P2Y6
Synonyms:	P2Y6
Mammalian Cell Selection:	Neomycin
Vector:	pCMV6-Entry (PS100001)
E. coli Selection:	Kanamycin (25 ug/mL)
ORF Nucleotide Sequence:	>RC221520 ORF sequence Red=Cloning site Blue=ORF Green=Tags(s)

TTTTGTAATACGACTCACTATAGGGCGCCGGGAATTCGTCGACTGGATCCGGTACCGAGGAGATCTGCC  
GCC**CGATCGCC**

ATGGAATGGGACAATGGCACAGGCCAGGCTCTGGGCTTGCCACCCACCACCTGTGTCTACCGGAGAACT  
TCAAGCAACTGCTGCTGCCACCTGTGTATTCGGCGGTGCTGGCGGCTGGCCTGCCGCTGAACATCTGTGT  
CATTACCCAGATCTGCACGTCCCGCCGGGCCCTGACCCGCACGGCCGTGTACACCCTAACCTTGTCTGT  
GCTGACCTGCTATATGCCTGCTCCCTGCCCTGCTCATCTACAACATGCCCCAAGGTGATCACTGGCCCT  
TTGGCGACTTCGCTGCCGCTGGTCCGCTTCTCTTCTATGCCAACCTGCACGGCAGCATCCTCTTCTCT  
CACCTGCATCAGCTTCCAGCGCTACCTGGGCATCTGCCACCCGCTGGCCCCCTGGCACAACGTTGGGGGC  
CGCCGGGCTGCCTGGCTAGTGTGTGTAGCCGTGTGGCTGGCCGTGACAACCCAGTGCCTGCCACAGCCA  
TCTTCGCTGCCACAGGCATCCAGCGTAACCGCACTGTCTGCTATGACCTCAGCCCGCTGCCCTGGCCAC  
CCACTATATGCCCTATGGCATGGCTCTCACTGTATCGGCTTCTCTGCTGCCCTTTGCTGCCCTGTGGCC  
TGCTACTGTCTCCTGGCTGCCGCTGTGCCGCCAGGATGGCCCGCAGAGCCTGTGGCCAGGAGCGGC  
GTGGCAAGGGCGCCCGCATGGCCGTGGTGGTGGCTGTGCCTTTGCCATCAGTTCCTGCCTTTTACAT  
CACCAAGACAGCCTACCTGGCAGTGCCTCGACGCCGGCGTCCCTGCAGTGTATTGGAGGCCTTTGCA  
GCGGCCCTACAAAGGCACGCGCCGTTTGGCAGTGCCAACAGCGTGTGGACCCCATCCTCTTCTACTTCA  
CCAGAAGAAGTTCGCCGGCGACACATGAGTCTACAGAACTCACGCCAAATGGCAGAGGCAGGG  
TCGC

**ACGCGT**ACGCGGCCGCTCGAGCAGAACTCATCTCAGAAGAGGATCTGGCAGCAAATGATATCCTGGATT  
ACAAGGATGACGACGATAAGGTTTAA



[View online »](#)

**Protein Sequence:** >RC221520 protein sequence  
Red=Cloning site Green=Tags(s)

```
MEWDNGTGQALGLPPTTCVYRENFKQLLLPPVYSAVLAAGLPLNICVITQICTSRRALTRTAVYTLNLAL
ADLLYACSLPLL IYNYAQGDHWPFGDFACRLVRF LFYANLHGSILFLTCISFQRYLGICHPLAPWHKRGG
RRAAWLVCVAVWLAVTTQCLPTAIFAATGIQRNRTVCYDLSPPALATHYMPYGMALTVIGFLLPFAALLA
CYLLACRLCRQDGAEPVAQERRGKAARMVAVVAAAF AISFLPFHITKTAYLAVRSTPGVPCTVLEAFA
AAYKGRPFASANSVLDPILFYFTQKKFRRRPHELLQKL TAKWQRQGR
```

TRTRPLEQKLISEEDLAANDILDYKDDDDKV

**Chromatograms:** [https://cdn.origene.com/chromatograms/mk6386\\_e05.zip](https://cdn.origene.com/chromatograms/mk6386_e05.zip)

**Restriction Sites:** SgfI-MluI

**Cloning Scheme:**

Cloning sites used for ORF Shuttling:



\* The last codon before the Stop codon of the ORF

**ACCN:** NM\_176798

**ORF Size:** 984 bp

**OTI Disclaimer:** The molecular sequence of this clone aligns with the gene accession number as a point of reference only. However, individual transcript sequences of the same gene can differ through naturally occurring variations (e.g. polymorphisms), each with its own valid existence. This clone is substantially in agreement with the reference, but a complete review of all prevailing variants is recommended prior to use. [More info](#)

**OTI Annotation:** This clone was engineered to express the complete ORF with an expression tag. Expression varies depending on the nature of the gene.

**Components:** The ORF clone is ion-exchange column purified and shipped in a 2D barcoded Matrix tube containing 10ug of transfection-ready, dried plasmid DNA (reconstitute with 100 ul of water).

**Reconstitution Method:**

1. Centrifuge at 5,000xg for 5min.
2. Carefully open the tube and add 100ul of sterile water to dissolve the DNA.
3. Close the tube and incubate for 10 minutes at room temperature.
4. Briefly vortex the tube and then do a quick spin (less than 5000xg) to concentrate the liquid at the bottom.
5. Store the suspended plasmid at -20°C. The DNA is stable for at least one year from date of shipping when stored at -20°C.

**RefSeq:** [NM\\_176798.2](#)

**RefSeq Size:** 2649 bp

**RefSeq ORF:** 987 bp

**Locus ID:** 5031

**UniProt ID:** [Q15077](#)

**Cytogenetics:** 11q13.4

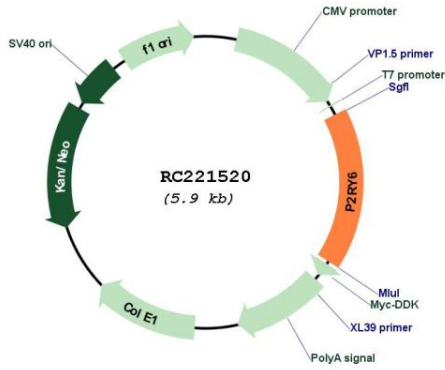
**Protein Families:** Druggable Genome, GPCR, Transmembrane

**Protein Pathways:** Neuroactive ligand-receptor interaction

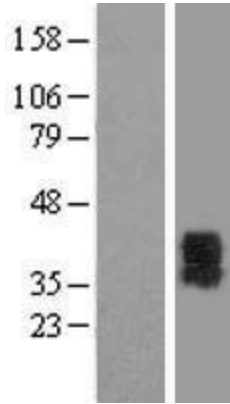
**MW:** 36.4 kDa

**Gene Summary:** The product of this gene belongs to the family of P2 receptors, which is activated by extracellular nucleotides and subdivided into P2X ligand-gated ion channels and P2Y G-protein coupled receptors. This family has several receptor subtypes with different pharmacological selectivity, which overlaps in some cases, for various adenosine and uridine nucleotides. This receptor, which is a G-protein coupled receptor, is responsive to UDP, partially responsive to UTP and ADP, and not responsive to ATP. It is proposed that this receptor mediates inflammatory responses. Alternative splicing results in multiple transcript variants that encode different protein isoforms. [provided by RefSeq, Mar 2013]

Product images:



Circular map for RC221520



Western blot validation of overexpression lysate (Cat# [LY406126]) using anti-DDK antibody (Cat# [TA50011-100]). Left: Cell lysates from untransfected HEK293T cells; Right: Cell lysates from HEK293T cells transfected with RC221520 using transfection reagent MegaTran 2.0 (Cat# [TT210002]).