

## Product datasheet for **RC221507**

### PPP1R10 (NM\_002714) Human Tagged ORF Clone

#### Product data:

Product Type:	Expression Plasmids
Product Name:	PPP1R10 (NM_002714) Human Tagged ORF Clone
Tag:	Myc-DDK
Symbol:	PPP1R10
Synonyms:	CAT53; FB19; p99; PNUTS; PP1R10; R111
Mammalian Cell Selection:	Neomycin
Vector:	pCMV6-Entry (PS100001)
E. coli Selection:	Kanamycin (25 ug/mL)



[View online »](#)

**ORF Nucleotide Sequence:**

>RC221507 representing NM\_002714  
 Red=Cloning site Blue=ORF Green=Tags(s)

TTTTGTAATACGACTCACTATAGGGCGGCCGGAATTCGTCGACTGGATCCGGTACCGAGGAGATCTGCC  
 GCC**CGATCGCC**

ATGGGTT**CGGGTCCCATAGACCCAAAGA**ACTTCTCAAGGGCCTGGACAGCTTCTTAACCGAGATGGGG  
 AAGTCAAAGTGTGGATGGGATTTCCAAGATCTTCAGTTT**GATGAAGGAAGCACGAAAGATGGT**GAGT**CG**  
 ATGCAC**TACTTGAACATTCTCCTGCAGACCCGTT**CACCAGAAATATTGGTCAAATTTATTGACGTTGGC  
 GGCTACAAACTTCTTAACAATTGGCTGACGTATTCAAAGACAACCAACAACATTCCCTCCTCCAGCAAA  
 TTCTACTGACCTGCAGCATCTACCGCTACTGTAGACCATCTCAAGCAGAAACAACAGCTAAACTGGT  
 GAAGCAGCTGAGCAAGTCAAGTGAAGTGAAGAGCTCCGAAATGGCCCTCAGTCTTGT**CAGCGACTGG**  
 ATGGCTGCATCCGCTCTCAGAGCAGTACCCAGCCTGCTGAGAAAGATAAGAAGAAACGTAAGATGAAG  
 GAAAAAGT**CGAACTACCTTCTGAGCGACCTT**TGACAGAGGTGAAGGCTGAGACCCGGGCTGAGGAGGC  
 CCCAGAGAAGAAGAGGGAGAAGCCAAGTCTTTCGCACCACAGCACCCAGTCATGCCAAGTTCCGTTCC  
 ACTGGACTAGAGCTGGAGACACCATCCTTGGTGCCTGTGAAGAAGAAATGCCAGCAGAGTGGTGGTTCTG  
 ACAAGTACAACCTTAAACCCATCCCTCAAACGTCAGAGCAACGTAGCTGCTCCAGGAGATGCCACTCC  
 CCCTGCAGAGAAGAAATACAAGCCACTCAACACAACACCTAATGCCACCAAGAGATCAAAGTGAAGATC  
 ATCCCGCCACAGCCTATGGAGGGCCTGGGCTTTCTGGATGCTCTTAATTCAGCCCTGTTCCAGGCATCA  
 AAATTAAGAAGAAAAAAAAAGTACTGTCACCTACGGCTGCCAAGCCAAGCCCTTTGAAGGGAAAACGAG  
 CACAGAACCAAGCACAGCCAAACCTTCTCCCCAGAACCAGCACCACTTCTGAGGCAATGGACGCAGAC  
 CGTCCAGGCACCCCGGTTCCCTGTTGAAGTCCCGAGCTCATGGATACAGCCTCTTTGGAGCCAGGAG  
 CTCTGGATGCCAAGCCAGTGGAGAGTCCCTGGAGATCCTAACCAACTGACCCGAAAGGCAGGAAGAGGAA  
 AAGTGTGACATGGCCTGAGGAAGGCAAACTGAGAGAATATTTCTATTTTGAATTGGATGAAACTGAACGA  
 GTAATGTGAATAGATCAAGGACTTTGGTGAAGCGGCTAAGCGAGAGATACTGT**CAGACC**GACATGCAT  
 TTGAGACAGCGCGGCTCTGAGCCATGATAACATGGAGGAGAAGGTGCCCTGGGTGTGCCCCGGCCCT  
 GGTTCTGCCCTCACCTCTGTCAACCCTGGAAGCAATAGTCAGGAGCGATATATCCAGGCTGAGCGGGAG  
 AAGGGAATCCTTCAGGAGCTCTTCTGAACAAGGAGAGTCTCATGAGCCTGATCCTGAGCCCTACGAGC  
 CCATACCCCTAAACTCATCCCTAGATGAGGAGTGTCCATGGATGAGACTCCGATGTTGAGACTCT  
 GGAACCTGGGGGT**CAGGTGGCTCACCTGATGGGGCAGGAGGCT**CCAAGTTGCCTCCAGTCTGGCCAAT  
 CTTATGGGAAGCATGGGTGCTGGAAGGGCCCCAAGGCCCTGGAGGAGGAGGCATTAATGTCCAAGAGA  
 TCCTCACCTCCATCATGGGTAGCCAAACAGTCATCCTTCAGAGGAACTACTGAAACAACAGACTATTC  
 GGACAAGATCAAGCAGATGCTGGTGCCACATGGACTCCTAGGCCCTGGCCCAATAGCCAATGGTTTCCCA  
 CCAGGGGGTCTGGGGGCCCAAGGGCATGCAGCACTTTCCCTGGACCTGGGGGACCTATGCCAGGTC  
 CCCATGGAGGCCCTGGTGGGCCAGTGGGTCCACGTCTTCTGGGTCTCCACCCCTCCCGGGGAGGTGA  
 TCCCTTCTGGGATGGCCCGGGCACCCTATGCGGGGTGGCCCAATGCGGGGGGTCCAGGACCAGGTCTT  
 GGACCATACCATAGAGGCCGAGGTGGCCGAGGAGGAAACGAACCTCCTCCTCCTCCTCCATTCCGAG  
 GCGCCAGAGGAGGTGCCTCTGGAGGAGGACCCCAATGGACGAGGGGGCCCTGGTGGGGCATGGTTGG  
 AGGTGGTGGGCATCGTCTCACGAAGGCCCTGGTGGGGCATGGGCAACAGCAGTGGACATCGTCCCCAC  
 GAAGGCCCTGGCGGTGGCATGGGAAGTGGGCATCGCCCCATGAAGGCCCTGGTGGTAGCATGGGTGGGG  
 GTGGAGGACATCGTCCACGAAGGCCCTGGCGGTGGCATCAGTGGTGGCAGTGGCCATCGTCCCATGA  
 AGGCCCTGGCGGAGGAATGGGTGCCGTGGTGGACATCGCCCCACGAAGGCCCTGGCGGAAGCATGGGT  
 GGAAGTGGTGGACATCGTCCCATGAAGGCCCTGGACACGGGGGCCCATGGCCACCGCCTCATGATG  
 TCCCTGGTACCGAGGCCATGACCATCGAGGGCCGCCACCTCATGAGCACCGTGGCCATGATGGTCTGG  
 CCACGGGGGAGGGGGCCACCGAGGGCACGATGGAGGCCACAGCCATGGAGGAGACATGTCAAACCGCCT  
 GTCTGCCGACATTT**CATGATGAAGGGCAACTGCCGCTATGAGAACA**ACTGTGCCTTACCACCCGGGTG  
 TCAATGGGCCCCCTGCC

**ACGCGT**ACGCGGCCGCTCGAGCAGAAACTCATCTCAGAAGAGGATCTGGCAGCAAATGATATCCTGGATT  
 ACAAGGATGACGACGATAAGGTTTAA

**Protein Sequence:** >RC221507 representing NM\_002714  
Red=Cloning site Green=Tags(s)

```

MGSGPIDPKELLKGLDSFLNRDGEVKSVDGISKIFSLMKEARKMVSRCYLNILLQTRSPEILVKFIDVG
GYKLLNNWLTYSKTTNNIPLLQIILLTLQHLPLVDHLKQNTAKLVKQLSKSSEDEELRKLASVLVSDW
MAVIRSQSTQPAEKDKKKRDEGKSRTTLPERPLTEVKAETRAEEAPEKKREKPKSLRTTAPSHAKFRS
TGLELETPSLVPVKKNASTVVVSDKYNLKPIPLKRQSNVAAPGDATPPAEKYYKPLNTTPNATKEIKVKI
IPPQPMGLGFLDALNSAPVPGIKIKKKKVLSPATAAKPSPFEGKTSTEPSTAKPSSPEAPPSEAMDAD
RPGTVPVPVEVPELMDTASLEPGALDAKPVESPGDPNQLTRKGRKRKSVTWPEEGKLREYFYFELDETER
VNVNLIKDFGEAAKREILSDRHAFETARRLSHDNMEEKVPWVCPRLVLPSPVTPGSNSQERYIQAERE
KGILQELFLNKESPHEPDPEYEP IPPKLIPLDEECMDETPYVETLEPGGSGGSPDGAGGSKLPPVLAN
LMGSMGAGKGPQGGGGINVQEILTSIMGSPNSHPSEELLKQPDYSDKIKQMLVPHGLLGPPIANGFP
PGGPGGPKGMQHFPPGGGPMGPHGGPGGPGVGRLLGPPPPRGGDPFWDGPGDPMRGGPMRGGPGGP
GPYHRGRGGRGGNEPPPPPPFRGARGGRSGGPPNGRGGPGGGMVGGGHRPHEGPGGGMNSSGHRPH
EGPGGGMGSGHRPHEGPGGSMGGGGHRPHEGPGGGISGGSGHRPHEGPGGGMGAGGGHRPHEGPGGSMG
GSGGHRPHEGPGHGGPHGHRPHDVPGHRGHDHRGPPPHHRGHDGPGHGGGHRGHDGGHSHGGDMSNRP
VCRHFMMKGNCRYENNAFYHPGVNGPPLP
  
```

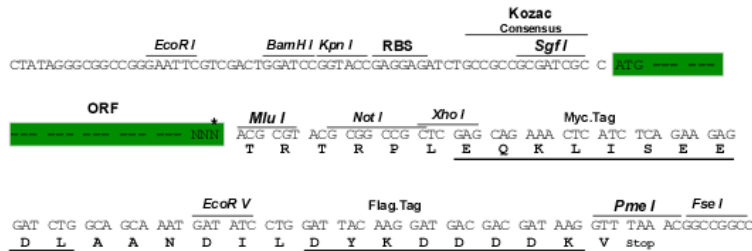
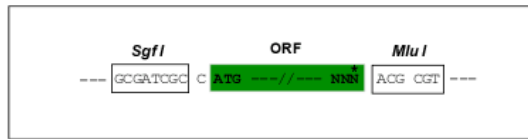
TRTRPLEQKLISEEDLAANDILDYKDDDDKV

**Chromatograms:** [https://cdn.origene.com/chromatograms/mk6612\\_d04.zip](https://cdn.origene.com/chromatograms/mk6612_d04.zip)

**Restriction Sites:** SgfI-MluI

**Cloning Scheme:**

Cloning sites used for ORF Shuttling:



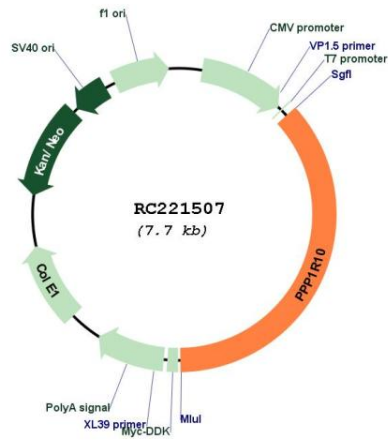
\* The last codon before the Stop codon of the ORF

**ACCN:** NM\_002714

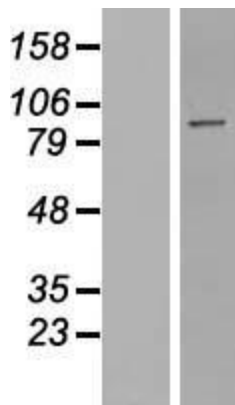
**ORF Size:** 2820 bp

<b>OTI Disclaimer:</b>	The molecular sequence of this clone aligns with the gene accession number as a point of reference only. However, individual transcript sequences of the same gene can differ through naturally occurring variations (e.g. polymorphisms), each with its own valid existence. This clone is substantially in agreement with the reference, but a complete review of all prevailing variants is recommended prior to use. <a href="#">More info</a>
<b>OTI Annotation:</b>	This clone was engineered to express the complete ORF with an expression tag. Expression varies depending on the nature of the gene.
<b>Components:</b>	The ORF clone is ion-exchange column purified and shipped in a 2D barcoded Matrix tube containing 10ug of transfection-ready, dried plasmid DNA (reconstitute with 100 ul of water).
<b>Reconstitution Method:</b>	<ol style="list-style-type: none"> <li>1. Centrifuge at 5,000xg for 5min.</li> <li>2. Carefully open the tube and add 100ul of sterile water to dissolve the DNA.</li> <li>3. Close the tube and incubate for 10 minutes at room temperature.</li> <li>4. Briefly vortex the tube and then do a quick spin (less than 5000xg) to concentrate the liquid at the bottom.</li> <li>5. Store the suspended plasmid at -20°C. The DNA is stable for at least one year from date of shipping when stored at -20°C.</li> </ol>
<b>RefSeq:</b>	<a href="#">NM_002714.4</a>
<b>RefSeq Size:</b>	4540 bp
<b>RefSeq ORF:</b>	2823 bp
<b>Locus ID:</b>	5514
<b>UniProt ID:</b>	<a href="#">Q96QC0</a>
<b>Cytogenetics:</b>	6p21.33
<b>Domains:</b>	zf-CCCH, TFS2N
<b>Protein Families:</b>	Druggable Genome, Phosphatase, Transcription Factors
<b>MW:</b>	98.9 kDa
<b>Gene Summary:</b>	This gene encodes a protein phosphatase 1 binding protein. The encoded protein plays a role in many cellular processes including cell cycle progression, DNA repair and apoptosis by regulating the activity of protein phosphatase 1. This gene lies within the major histocompatibility complex class I region on chromosome 6, and alternatively spliced transcript variants have been observed for this gene. [provided by RefSeq, Jul 2012]

Product images:



Circular map for RC221507



Western blot validation of overexpression lysate (Cat# [LY419150]) using anti-DDK antibody (Cat# [TA50011-100]). Left: Cell lysates from untransfected HEK293T cells; Right: Cell lysates from HEK293T cells transfected with RC221507 using transfection reagent MegaTran 2.0 (Cat# [TT210002]).