

Product datasheet for **RC221494**

SUSD5 (NM_015551) Human Tagged ORF Clone

Product data:

Product Type:	Expression Plasmids
Product Name:	SUSD5 (NM_015551) Human Tagged ORF Clone
Tag:	Myc-DDK
Symbol:	SUSD5
Mammalian Cell Selection:	Neomycin
Vector:	pCMV6-Entry (PS100001)
E. coli Selection:	Kanamycin (25 ug/mL)



[View online »](#)

ORF Nucleotide Sequence:

>RC221494 representing NM_015551
 Red=Cloning site Blue=ORF Green=Tags(s)

TTTTGTAATACGACTCACTATAGGGCGGCCGGAATTCGTCGACTGGATCCGGTACCGAGGAGATCTGCC
 GCC**CGGATCGCC**

ATGACTGCCGAGGACCCAGCCCGCTGCCGTTGGCACAGACGCTCCCGGGCTCTGGCGCGCGCCG
 TGCTCCTGCTCGGTCTGCGCGCCTTTCGGTGC GGCGGATGAAAGTTCTTTGTGCTGGAGTCTAGAA
 TGGCTCTCAGGGCCTACAACTGGAGGCTGCTCGGCTTTCCTGCAAGAGCAGGGCGCTCACCTGGCATCT
 GCAGACGAGTGC GGAGAGTGGTACAGGATTGCTCCTTTCGGTGTGCACCACTGGCTAGCAGATG
 GACTCTTGGAACTGTGTAGCAAAGGAAGTGGAGAACAGCAAATCATGAGAGCTGTCGATGTGAG
 AATTGAGAGCAACCCAGTTCCTGGTGGCACATACAGTGCCTTTGTATTAAGGATGAAGAGAAGCCGTGT
 GGAGACCCGCTTCGTTCCACACACCATCCTGCAGGGCCGACCGGCTTGAAATGGGGATGAAGTGC
 TGTACGTGTGCCCCAGGCCACATCATGGCCACCGGGAGACCGCTTACCTTGCTATGTAACAGCTG
 TGGGAGTGGTACGGCTGGTGCAGGCCGTGGGAAAGATGAGGCTGAGGCACACATTGACTATGAAGAT
 AACTTCCCTGATGACAGATCTGTGTCATTAGAGAGCTCATGGAGGATCCCGGACAGAGGCAGATGAGG
 ACAGGGGTACGGGAGACTCCTCTGAGGAGGCTCCAAAACAGGACCGTCTGGTCTCCATTTCTGTGGGGAG
 AGAAAACATAGCCCGGATAAAGTCTTTGTGCCAACACAGGCTTGCCTGGTGTGGGAGCAGTGTCCCC
 GCAGATTCACCAGGATACCGGCTGCTCCAGAAGCACTTGTTCGGTTTCTGCTGAGGCTTTCACAAGC
 CTGGGTGGAAAAGGAGTGGATGATGACACAAAAAGCAGTTTTCTGCTGGAGACAACACAGTGGTGT
 AAAATTGGTCCCAGTGAACCTGAAACCAAGGTGATCTACGGCAACACTGATGGTCCCTCGGGCCATTT
 GTGGGCAAGAATGACAGCAAGGCAGGAGATCCAGTGGTGCAGCAGTGTGAGTCTGGTTAGATGGCT
 ACCCTGTGACAGAGGGGCTTGGAGGAAGACAGAGGCAGAAAGGAAGAAGATGGGGACAGAGGGGATGG
 GTCAGTAGGGCTGGATGAAAACGTCCTAGTTACTCCTGATCAGCCATTCTTGTGGAAGTTAAGAAGCCC
 AAGAGTAGCACCTCACACCAAGCGAGGCATGACCCATAGTTCAGTTCTTCCATCTCAAATGCTAGATG
 TGAAGCTTTGGCGCTCAGACCCGTAATGCTTCCGAGACTGAGGGCATTGGGGATGGTACTTGACGAA
 GTACCAGTCAACTCTACCCTGGAGATTCATCACAGAGGAATCTCCATGGCCACCCTGCTCATGAGCTC
 ACCAGCTCACCTGGAGATTTAACAGTGAACACTGTCAAGCAGACACCTAACACATCCCCTCAACGA
 TCATGGCAACCCAGCCTCCAGTAGAAACACTGTTCTGAGATCCAGGATAGCTTCCATACCTGCT
 GTCTGAAGACTTCTTTGGACAGGAAGGCCCGGGCCAGGTGCAAGTGGAGGCTTCCATCCACCTGGAG
 TCGTGTGTGGGGACGGATGCTTGGCCTCAGCAGAGGCCCTGTGATCGCCACCATGTCCACCGTCTGT
 GCCTACTGCTGCTCCTGGCAGGTGTGGGATGGTGTGGGCTACCGCAAGTGCCAGCACAAAGAGCTGT
 GTACAAGCTGAATGTTGGCCAGCGGCAGGCTCGGCACTACCACCAGCAGATCGAGATGGAGAAGGTC

ACGCGTACGCGGCCGCTCGAGCAGAACTCATCTCAGAAGAGGATCTGGCAGCAAATGATATCCTGGATT
 ACAAGGATGACGACGATAAGGTTTAA

Protein Sequence:

>RC221494 representing NM_015551
 Red=Cloning site Green=Tags(s)

MTAEGPSPPARWHRRLPGLWAAALLLLGLPRLSVRADGKFFVLESQNGSQGLQLEAARLSCKSRGAHLAS
 ADELRRVVQDCSFVCTTGWLADGTLGTTVCSKSGSEQQIMRAVDVRIESNPVPGGTYSALCIKDEEKPC
 GDPPSFPHTILQGRGTGLEMGDELLYVCPGHIMGHRETAFTLLCNSCGEWYGLVQACGKDEAEAHIDYED
 NFPDDRSVSFRELMEISRTEADEDRGQGSSEEA PKQDRLVSI SVGRENIARDKVFVPTTGLPGAGSSVP
 ADSPGSRLLQKHLFWFPAEAFHKPGLKEKEVDDDTKKQFSAGDNHSGVKLVGPEPETKVIYNGTDGPSGPF
 VGKNDKAGDPVVS SDES WLDGYPVTEGAWRKTEAE EEDGDRGDG SVGLDENL VTPDQPI LVEVKKP
 KSSTLTPSEG MTHSSVLP SQMLDVEALALRPVNA SETEGIGDGLTKYQSTLPWRFITEESPMATLSYEL
 TSSTLEILTVNTVKQTPNHI PSTIMATTQPPVETTVEIQDSFPYLLSEDFFGQEGPGP GASEELHPTLE
 SCVGDGCPGLSRGPVIATIVTVLCLLLLLLAGVGMVWGYRKCQHKSSVYKLN VNGQRQARHYHQIEMEKV

TRTRPLEQKLISEEDLAANDILDYKDDDDKV

Chromatograms:

https://cdn.origene.com/chromatograms/mk8009_c12.zip

Restriction Sites: SgfI-MluI

Cloning Scheme:



ACCN: NM_015551

ORF Size: 1887 bp

OTI Disclaimer: The molecular sequence of this clone aligns with the gene accession number as a point of reference only. However, individual transcript sequences of the same gene can differ through naturally occurring variations (e.g. polymorphisms), each with its own valid existence. This clone is substantially in agreement with the reference, but a complete review of all prevailing variants is recommended prior to use. [More info](#)

OTI Annotation: This clone was engineered to express the complete ORF with an expression tag. Expression varies depending on the nature of the gene.

Components: The ORF clone is ion-exchange column purified and shipped in a 2D barcoded Matrix tube containing 10ug of transfection-ready, dried plasmid DNA (reconstitute with 100 ul of water).

Reconstitution Method:

1. Centrifuge at 5,000xg for 5min.
2. Carefully open the tube and add 100ul of sterile water to dissolve the DNA.
3. Close the tube and incubate for 10 minutes at room temperature.
4. Briefly vortex the tube and then do a quick spin (less than 5000xg) to concentrate the liquid at the bottom.
5. Store the suspended plasmid at -20°C. The DNA is stable for at least one year from date of shipping when stored at -20°C.

RefSeq: [NM_015551.2](#)

RefSeq Size: 5005 bp

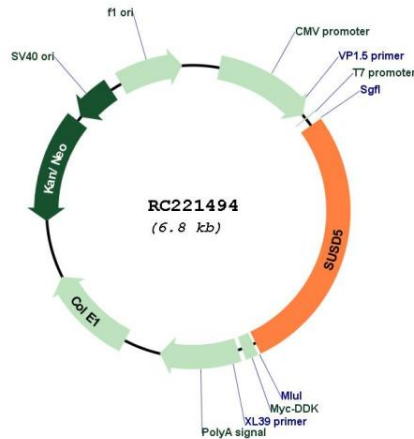
RefSeq ORF: 1890 bp

Locus ID: 26032

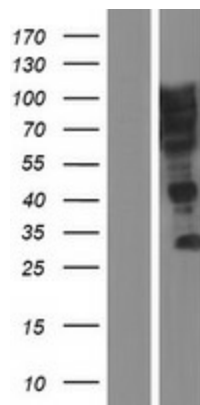
UniProt ID: [O60279](#)

Cytogenetics: 3p22.3
 Protein Families: Transmembrane
 MW: 67.8 kDa

Product images:



Circular map for RC221494



Western blot validation of overexpression lysate (Cat# [LY414467]) using anti-DDK antibody (Cat# [TA50011-100]). Left: Cell lysates from untransfected HEK293T cells; Right: Cell lysates from HEK293T cells transfected with RC221494 using transfection reagent MegaTran 2.0 (Cat# [TT210002]).