

## Product datasheet for RC221483

### CTRP1 (C1QTNF1) (NM\_030968) Human Tagged ORF Clone

#### Product data:

Product Type:	Expression Plasmids
Product Name:	CTRP1 (C1QTNF1) (NM_030968) Human Tagged ORF Clone
Tag:	Myc-DDK
Symbol:	CTRP1
Synonyms:	CTRP1; GIP; ZSIG37
Mammalian Cell Selection:	Neomycin
Vector:	pCMV6-Entry (PS100001)
E. coli Selection:	Kanamycin (25 ug/mL)
ORF Nucleotide Sequence:	>RC221483 representing NM_030968 Red=Cloning site Blue=ORF Green=Tags(s)

TTTTGTAATACGACTCACTATAGGGCGGCCGGAATTCGTCGACTGGATCCGGTACCGAGGAGATCTGCC  
GCC**CGATCGCC**

ATGGGCTCCCGTGGACAGGGACTCTTGCTGGCGTACTGCCTGCTCCTTGCCTTTGCCTCTGGCCTGGTCC  
TGAGTCGCGTGCCCATGTCCAGGGGAACAGCAGGAGTGGGAGGGGACTGAGGAGCTGCCGTCCCTCC  
GGACCATGCCGAGAGGGCTGAAGAACAACATGAAAAATACAGGCCAGTCAGGACCAGGGGCTCCCTGCT  
TCCCGGTGCTTGCCTGTGTGACCCTGGTACCTCCATGTACCCGGCGACCGCCGTGCCCATCAACA  
TCACTATCTTAAAGGGGAGAAGGGTGACCGCGGAGATCGAGGCCTCAAGGGAAATATGGCAAAACAGG  
CTCAGCAGGGGCCAGGGCCACACTGGACCCAAAGGGCAGAAGGGCTCCATGGGGGCCCTGGGGAGCGG  
TGCAAGAGCCACTACGCCCTTTTCGGTGGGCGGAAGAAGCCCATGCACAGCAACCACTACTACCAGA  
CGGTGATCTTCGACACGGAGTTCGTGAACCTCTACGACCACTTCAACATGTTACCCGGCAAGTTCTACTG  
CTACGTGCCCCGCCCTCTACTTCTCAGCCTCAACGTGCACACCTGGAACCAGAAGGAGACCTACCTGCAC  
ATCATGAAGAACGAGGAGGAGGTGGTATCTTGTTCGCGCAGGTGGGCGACCGCAGCATCATGCAAAGCC  
AGAGCCTGATGCTGGAGCTGCGAGAGCAGGACCAGGTGTGGGTACGCCTTACAAGGGCGAACGTGAGAA  
CGCCATCTTCAGCGAGGAGCTGGACACCTACATCACCTTCAGTGGCTACCTGGTCAAGCACGCCACCGAG  
CCC

**ACGCGT**ACGCGGCCGCTCGAGCAGAAACTCATCTCAGAAGAGGATCTGGCAGCAAATGATATCCTGGATT  
ACAAGGATGACGACGATAAGGTTTAA



[View online »](#)

**Protein Sequence:** >RC221483 representing NM\_030968  
Red=Cloning site Green=Tags(s)

MGSRGQGLLLAYCLLLAFASGLVLSRVPHVQGEQQEWEGTEELPSPPDHAERAEQHEKYRPSQDQGLPA  
 SRCLRCCDPGTSMPATAVPQINITILKGEKDRGDRGLQGYKGTGSAGARGHTGPKGQKGSMSGAPGER  
 CKSHYAAF SVGRKKPMHSNHYYQTVIFDTEFVNLYDHFNMFTGKFYCYVPLGYFFSLNVHTWNQKETYLH  
 IMKNEEEVVILFAQVGDRESIMQSQSLMLELREQDQVWVRLYKGERENAIIFSEELDTYITFSGYLVKHATE  
 P

TRTRPLEQKLISEEDLAANDILDYKDDDDKV

**Chromatograms:** [https://cdn.origene.com/chromatograms/mk6094\\_g12.zip](https://cdn.origene.com/chromatograms/mk6094_g12.zip)

**Restriction Sites:** SgfI-MluI

**Cloning Scheme:**



**ACCN:** NM\_030968

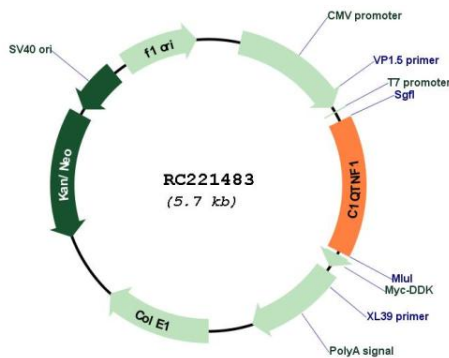
**ORF Size:** 843 bp

**OTI Disclaimer:** Due to the inherent nature of this plasmid, standard methods to replicate additional amounts of DNA in *E. coli* are highly likely to result in mutations and/or rearrangements. Therefore, OriGene does not guarantee the capability to replicate this plasmid DNA. Additional amounts of DNA can be purchased from OriGene with batch-specific, full-sequence verification at a reduced cost. Please contact our customer care team at [custsupport@origene.com](mailto:custsupport@origene.com) or by calling 301.340.3188 option 3 for pricing and delivery.

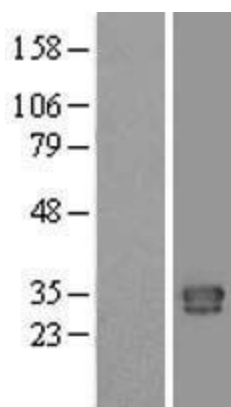
The molecular sequence of this clone aligns with the gene accession number as a point of reference only. However, individual transcript sequences of the same gene can differ through naturally occurring variations (e.g. polymorphisms), each with its own valid existence. This clone is substantially in agreement with the reference, but a complete review of all prevailing variants is recommended prior to use. [More info](#)

<b>OTI Annotation:</b>	This clone was engineered to express the complete ORF with an expression tag. Expression varies depending on the nature of the gene.
<b>Components:</b>	The ORF clone is ion-exchange column purified and shipped in a 2D barcoded Matrix tube containing 10ug of transfection-ready, dried plasmid DNA (reconstitute with 100 ul of water).
<b>Reconstitution Method:</b>	<ol style="list-style-type: none"> <li>1. Centrifuge at 5,000xg for 5min.</li> <li>2. Carefully open the tube and add 100ul of sterile water to dissolve the DNA.</li> <li>3. Close the tube and incubate for 10 minutes at room temperature.</li> <li>4. Briefly vortex the tube and then do a quick spin (less than 5000xg) to concentrate the liquid at the bottom.</li> <li>5. Store the suspended plasmid at -20°C. The DNA is stable for at least one year from date of shipping when stored at -20°C.</li> </ol>
<b>RefSeq:</b>	<u><a href="#">NM_030968.1</a></u>
<b>RefSeq Size:</b>	2923 bp
<b>RefSeq ORF:</b>	846 bp
<b>Locus ID:</b>	114897
<b>UniProt ID:</b>	<u><a href="#">Q9BXJ1</a></u>
<b>Cytogenetics:</b>	17q25.3
<b>Domains:</b>	C1Q
<b>Protein Families:</b>	Druggable Genome, Secreted Protein, Transmembrane
<b>MW:</b>	31.6 kDa

**Product images:**



Circular map for RC221483



Western blot validation of overexpression lysate (Cat# [LY404797]) using anti-DDK antibody (Cat# [TA50011-100]). Left: Cell lysates from untransfected HEK293T cells; Right: Cell lysates from HEK293T cells transfected with [RC222462] using transfection reagent MegaTran 2.0 (Cat# [TT210002]).