

Product datasheet for **RC221477**

IL18R Beta (IL18RAP) (NM_003853) Human Tagged ORF Clone

Product data:

Product Type:	Expression Plasmids
Product Name:	IL18R Beta (IL18RAP) (NM_003853) Human Tagged ORF Clone
Tag:	Myc-DDK
Symbol:	IL18R Beta
Synonyms:	ACPL; CD218b; CDw218b; IL-1R-7; IL-1R7; IL-1RAcPL; IL-18R-beta; IL-18RAcP; IL-18Rbeta; IL18RB
Mammalian Cell Selection:	Neomycin
Vector:	pCMV6-Entry (PS100001)
E. coli Selection:	Kanamycin (25 ug/mL)



[View online »](#)

ORF Nucleotide Sequence:

```
>RC221477 ORF sequence
Red=Cloning site Blue=ORF Green=Tags(s)

TTTTGTAATACGACTCACTATAGGGCGGCCGGAATTCGTCGACTGGATCCGGTACCGAGGAGATCTGCC
GCCCGCATCGCC

ATGCTCTGTTGGGCTGGATATTTCTTTGGCTTGTTCAGGAGAGCGAATTAAAGGATTTAATATTTTCAG
GTTGTTCCACAAAAAACTCCTTTGGACATATTCTACAAGGAGTGAAGAGGAATTTGCTTATTTTGTGA
TTTACCAGAGCCACAGAAATCACATTTCTGCCACAGAAATCGACTCTACCAAAAAAAGTCCCTGAGCAC
CTGCCCTTCATGGGTAGTAACGACCTATCTGATGTCCAATGGTACCAACAACCTTCAATGGAGATCCAT
TAGAGGACATTAGGAAAAGCTATCCTCACATCATTAGGACAAAATGTACCCTTCACTTTTGGACCCAGG
GGTGAATAATTCTGGGTCATATATTTGTAGACCAAGATGATTAAGAGCCCCTATGATGTAGCCTGTTGT
GTCAAGATGATTTAGAAGTTAAGCCCCAGACAAATGCATCCTGTGAGTATTCGCATCACATAAGCAAG
ACCTACTTCTGGGAGCACTGGCTCTATTTCTGGCCAGTCTCAGCTGCCAAAGTATGCACAAAGTCC
AGCGGTAACTGGTACAAGAATGAAAACTCCTCTGTGAAAGGAGCAACCGAATCGTAGTGGATGAA
GTTTATGACTATACCCAGGGCACATATGTATGTGATTACACTCAGTCGGATACTGTGAGTTCGTGGACAG
TCAGAGCTGTTGTTCAAGTGAGAACCATTGTGGGAGACACTAAACTCAAACCAGATATTCTGGATCCTGT
CGAGGACACACTGGAAGTAGAAGTTGAAAAGCCTTAACTATTAGCTGCAAAGCACGATTTGGCTTTGAA
AGGGTCTTTAACCTGTCAAAAATGGTACATCAAAGATTCTGACCTAGAGTGGGAAGTCTCAGTACCTG
AGGCGAAAAGTATTAATCCACTTTAAAGGATGAAATCATTGAGCGTAATATCATCTTGGAAAAAGTAC
TCAGCGTGATCTTCGAGGAAGTTGTTTGTCTTGTCCAGAACTCCATTGGAAACACAACCCAGTCCGTC
CAACTGAAAGAAAAGAGAGGAGTGGTCTCCTGTACATCCTGCTTGGCACCATCGGGACCCTGGTGGCCG
TGCTGGCGGCGAGTCCCTCCTACAGGCACTGGATTGAAATAGTGTCTGCTGCTACCCGACTACCGAG
CAAGGATCAGACGCTTGGGGATAAAAAGGATTTGATGCTTTCGTATCCTATGCAAAATGGAGCTCTTTT
CCAAGTGAGGCCACTTCACTCTGAGTGAAGAACAATTGGCCCTGAGCCTATTTCTGATGTTTTAGAAA
ACAAATATGGATATAGCCTGTGTTTGTGTTGAAAGAGATGTGGCTCCAGGAGGAGTGTATGCAGAAGACAT
TGTGAGCATTATTAAGAGAAGCAGAAGAGGAATTTTATCTTGGAGCCCAACTATGTCAATGGACCCAGT
ATCTTTGAACTACAAGCAGCAGTGAATCTTGCCTTGGATGATCAAACACTGAAACTATTTTAATTAAGT
TCTGTTACTTCCAAGAGCCAGAGTCTACCTCATCTCGTAAAAAGCTCTCAGGGTTTGGCCACAGT
TACTTGGAGAGGCTTAAAATCAGTTCCTCCAATTCTAGGTTCTGGGCCAAAATGCGCTACCACATGCCT
GTGAAAAACTCTCAGGGATTCAGTGAACAGCTCAGAATTACCTCTAGGATTTTTCAGTGAAAGGAC
TCAGTAGAACAGAAACCCTGGGAGGAGCTCCAGCCTAAGGAATGG

ACGCGTACGCGGCCGCTCGAGCAGAAACTCATCTCAGAAGAGGATCTGGCAGCAAATGATATCCTGGATT
ACAAGGATGACGACGATAAGGTTTAA
```

Protein Sequence:

```
>RC221477 protein sequence
Red=Cloning site Green=Tags(s)

MLCLGWIFLWLVAGERIKGFNISGCSTKLLWYSTRSEEFVLFCDLPEPQKSHFCHRNRLSPKQVPEH
LPFMGSNDLSDVQWYQQPSNGDPLEDIRKSYPHIIQDKCTLHFLTPGVNNSGSYICRPKMIKSPYDVACC
VKMILEVKPQTNASCEYSASHKQDLLLSTGSI SCPSLSCQSDAQSPAVTWYKNGKLLSVERSNRIVVDE
VYDYHQGTYYCDYTSQSDTVSSWTVRAVVQVRTIVGDTKLKPDILDPVEDTLEVELGKPLTISCKARFGFE
RVFNPVIKWIYIKDSDLEWEVSVPEAKSIKSTLKDDEIERNIILEKVTQRDLRRKFVCFVQNSIGNTQSV
QLKEKRGVLLYILLGTIGTLVAVLAASALLYRHWIEIVLLYRQYQSKDQTLGDKKDFDAFVSYAKWSSF
PSEATSSLSEEHLALSLFPDVLNENKYGYSCLLERDVAPGGVYAEDIVSIIKRSRRGIFILSPNYVNGPS
IFELQAAVNALDDQTLKILIKFCYFQEPESLPHLVKKALRVLPTVTWRGLKSVPPNSRFWAKMRMYHMP
VKNSQGF TWNQLRITSRIFQWKGLSRTE TTRSSQPKWE

TRTRPLEQKLISEEDLAANDILDYKDDDDKV
```

Chromatograms:

https://cdn.origene.com/chromatograms/mk6560_c11.zip

Restriction Sites: SgfI-MluI

Cloning Scheme:



ACCN: NM_003853

ORF Size: 1797 bp

OTI Disclaimer: The molecular sequence of this clone aligns with the gene accession number as a point of reference only. However, individual transcript sequences of the same gene can differ through naturally occurring variations (e.g. polymorphisms), each with its own valid existence. This clone is substantially in agreement with the reference, but a complete review of all prevailing variants is recommended prior to use. [More info](#)

OTI Annotation: This clone was engineered to express the complete ORF with an expression tag. Expression varies depending on the nature of the gene.

Components: The ORF clone is ion-exchange column purified and shipped in a 2D barcoded Matrix tube containing 10ug of transfection-ready, dried plasmid DNA (reconstitute with 100 ul of water).

- Reconstitution Method:
1. Centrifuge at 5,000xg for 5min.
 2. Carefully open the tube and add 100ul of sterile water to dissolve the DNA.
 3. Close the tube and incubate for 10 minutes at room temperature.
 4. Briefly vortex the tube and then do a quick spin (less than 5000xg) to concentrate the liquid at the bottom.
 5. Store the suspended plasmid at -20°C. The DNA is stable for at least one year from date of shipping when stored at -20°C.

RefSeq: [NM_003853.3](#)

RefSeq Size: 2672 bp

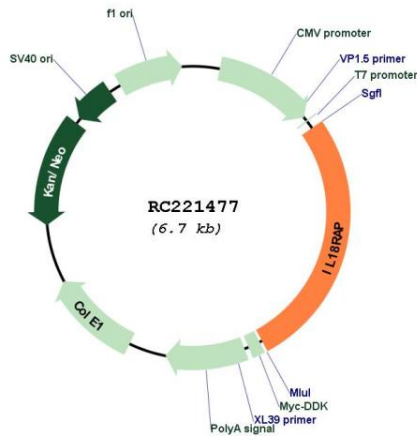
RefSeq ORF: 1800 bp

Locus ID: 8807

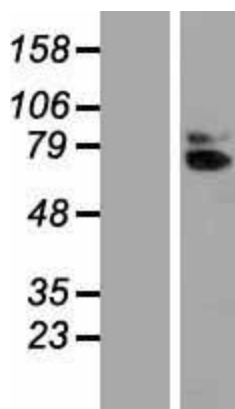
UniProt ID: [O95256](#)
Cytogenetics: 2q12.1
Domains: TIR, IG
Protein Families: Druggable Genome, Transmembrane
Protein Pathways: Cytokine-cytokine receptor interaction
MW: 68.3 kDa

Gene Summary: The protein encoded by this gene is an accessory subunit of the heterodimeric receptor for interleukin 18 (IL18), a proinflammatory cytokine involved in inducing cell-mediated immunity. This protein enhances the IL18-binding activity of the IL18 receptor and plays a role in signaling by IL18. Mutations in this gene are associated with Crohn's disease and inflammatory bowel disease, and susceptibility to celiac disease and leprosy. Alternatively spliced transcript variants of this gene have been described, but their full-length nature is not known. [provided by RefSeq, Feb 2014]

Product images:



Circular map for RC221477



Western blot validation of overexpression lysate (Cat# [LY418382]) using anti-DDK antibody (Cat# [TA50011-100]). Left: Cell lysates from untransfected HEK293T cells; Right: Cell lysates from HEK293T cells transfected with RC221477 using transfection reagent MegaTran 2.0 (Cat# [TT210002]).