

## Product datasheet for **RC221474**

### ZBTB7C (NM\_001039360) Human Tagged ORF Clone

#### Product data:

Product Type:	Expression Plasmids
Product Name:	ZBTB7C (NM_001039360) Human Tagged ORF Clone
Tag:	Myc-DDK
Symbol:	ZBTB7C
Synonyms:	APM-1; APM1; ZBTB36; ZNF857C
Mammalian Cell Selection:	Neomycin
Vector:	pCMV6-Entry (PS100001)
E. coli Selection:	Kanamycin (25 ug/mL)



[View online »](#)

**ORF Nucleotide Sequence:**

>RC221474 representing NM\_001039360  
 Red=Cloning site Blue=ORF Green=Tags(s)

TTTTGTAATACGACTCACTATAGGGCGGCCGGGAATTCGTCGACTGGATCCGGTACCGAGGAGATCTGCC  
 GCC**CGGATCGCC**

ATGGCCAATGACATTGATGAGCTCATTGGCATTCCCTTCCCCAACACAGCAGTGAAGTCTGTGCAGCC  
 TCAATGAGCAACGGCACGATGGCCTGCTGTGTGACGTGCTCCTGGTGGTGCAGGAGCAGGAGTATCGGAC  
 CCACCGCTCCGTCTGGCTGCCTGCAGCAAGTACTTCAAGAAGCTTTTCACAGCCGGCACCTAGCCAGC  
 CAGCCCTACGTCTATGAGATCGACTTTGTCCAGCCTGAGGCTCTGGCTGTATCCTGGAGTTCGCTACA  
 CCTCCACGCTCACCATCACCGCTGGCAATGTCAAGCACATCCTCAACGCAGCCAGGATGTGGAGATCCA  
 GTGCATCGTGAACGTGTGCCTGGAGATCATGGAGCCTGGGGGGGACGGGGGGGAGGAGGATGACAAGGAG  
 GACGATGACGACGACGAAGATGATGATGATGAGGAGGACGAAGAGGAGGAGGAGGAAGAGGAGGAGGATG  
 ACGATGATGACACGGAGGACTTTGCTGACCAAGAAAACCTGCCTGACCCCAAGGACATCAGTGCCACCA  
 AAGCCCTTCCAAGACAGACCATCTCACAGAGAAGGCCTATTCAGACACCCCAAGGACTTCCCTGACTCC  
 TTCCAGGCTGGCAGTCTGGCCATCTGGGGGTGATCCGGGACTTCTCCATCGAATCTCTGCTAAGGGAGA  
 ACCTGTACCCCAAGGCCAACATCCCGACAGGAGACCCTCCTTGTCTCCATTGCCCCGGACTTCTTTCC  
 ACACCTCTGGCCAGGGGACTTCCGGTGCCTTTGCCAGCTGCCTGAGCAGCCCATGGACAGTGGGCCACTG  
 GATCTGGTCAAGAATCGGAAGATCAAGGAGGAGGAGAAGGAGGAGCTGCCCCACCCCAAGCCAC  
 CCTTCCCTAATGACTTCTTCAAGGACATGTTCCCTGACCTGCCGGGGGGGCTCTGGGACCCATCAAGGC  
 GGAGAACGACTACGGTGCCTATCTCAACTTCTGAGTGCCACCCACTGGGAGGCCTCTTCCACCTGG  
 CCCCTGGTAGAAGAGCGCAAGCTGAAGCCCAAGGCCTCTCAGCAGTGCCCATCTGCCACAAAGTCATCA  
 TGGGGCCCGGAAGCTGCCGCGGCACATGAGGACCCATACCGGGGAGAAGCCATACATGTGCACCATCTG  
 CGAGTCCGCTTACCAGGACGACAAAGCTGAAAATCCACATGCGGAAGCACACAGGGGAGCGGCCCTAC  
 CTGTGCATCCACTGCAACGCCAAGTTCGTGCACAACACTACGACCTCAAGAACCACATGCGCATCCACACGG  
 GCGTGGCGCCCTACCAGTGCAGTTCGTGCTACAAGAGCTTACGCGCTCTGACCACCTGCACCGCCACAT  
 CAAGCGCCAGAGCTGCCGCATGGCACGGCCCCGACGCGGCCGCAAGCCTGCTGCGTGGAGGGCCGCCAGC  
 CTGCTCTCGGGCCCGCGGCCCGGCCCGGACAAAGCGGCCTTCTGATGCCCTGCGCTGGGCGAGG  
 TGGGGCGCCACCTGGGCGGCGCAGCTGTGTGCCTCCCGGCCCGCCCGCCCAAGCAAGCACTTCTGGCAGC  
 GCCAAGGGCGCCCTGAGCCTGCAAGAGCTGGAGCGGCAGTTCGAGGAGACACAGATGAAGCTGTTCCGG  
 CGCGCGCAGCTGGAGGCTGAGAGGAACGCGGGGGGCTCTGGCCTTCGCGCTGGCCGAGAACGTGGCGG  
 CGGCGCGCCCTACTTCCGCTGCCGACCTTGGGCGCGGCCCTGGCCGGCCTCCCTGGGCTCGCCGG  
 CCTCAACCACGTGGCCTCCATGTCCGAAGCCAACAAC

**ACGCGT**ACGCGGCCGCTCGAGCAGAAACTCATCTCAGAAGAGGATCTGGCAGCAATGATATCCTGGATT  
 ACAAGGATGACGACGATAAGGTTTAA

**Protein Sequence:**

>RC221474 representing NM\_001039360  
 Red=Cloning site Green=Tags(s)

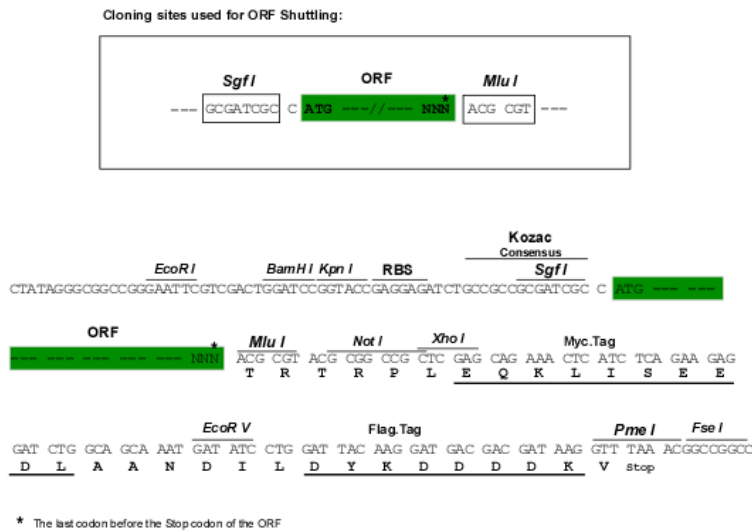
MANDIDELIGIPFNHSSEVLCSLNEQRHDGLLCDVLLVQEQEYRTHRSVLAACSKYFKKLFAGTLAS  
 QPYVVEIDFVQPEALAAILEFAYTSTLTITAGNVKHILNAARMLIEIQIVNVCLIMEPGDGGEEDDKE  
 DDDDDDDDDDEEEEEEEEEEDDDDDTEDFADQENLPDPQDISCHQSPSKTDHLTEKAYSDTPRDFPDS  
 FQAGSPGHLGVIRDFSIESLLRENLYPKANIPDRRPSLSPFAPDFPHLWPGDFGAFALPEQPMDSGPL  
 DLVIKNRKIKEEKEELPPPPPPFPNDFFKDMFPDLPGGPLGPIKAENDYGAYLNFLSATHLGGFLPPW  
 PLVEERLKPASQQCPICHKVI MGAGKLP RHMRTHTGEKPYMCTICEVRFTRQDKLKIHM RKHTGERPY  
 LCITHNAKFVHNYDLKNHMRHTGVRPYQCEFCYKSFTRSDHLHRHIKRQSCRMARPRGRKPAAWRAAS  
 LLFGPGGPAPDKAAFVMPPALGEVGGHLGGAAVCLPGPSPAKHFLAAPKALSLQELERQFEETQMKLFG  
 RAQLEAERNAGLLAFALAENVAARPYFPLPDPWAAGLAGLPLAGLNHVASMSEANN

**TR**TRPLEQKLI SEEDLAANDILDYKDDDDKV

Chromatograms: [https://cdn.origene.com/chromatograms/mk8042\\_g09.zip](https://cdn.origene.com/chromatograms/mk8042_g09.zip)

Restriction Sites: SgfI-MluI

Cloning Scheme:



ACCN: NM\_001039360

ORF Size: 1857 bp

OTI Disclaimer: The molecular sequence of this clone aligns with the gene accession number as a point of reference only. However, individual transcript sequences of the same gene can differ through naturally occurring variations (e.g. polymorphisms), each with its own valid existence. This clone is substantially in agreement with the reference, but a complete review of all prevailing variants is recommended prior to use. [More info](#)

OTI Annotation: This clone was engineered to express the complete ORF with an expression tag. Expression varies depending on the nature of the gene.

Components: The ORF clone is ion-exchange column purified and shipped in a 2D barcoded Matrix tube containing 10ug of transfection-ready, dried plasmid DNA (reconstitute with 100 ul of water).

Reconstitution Method:

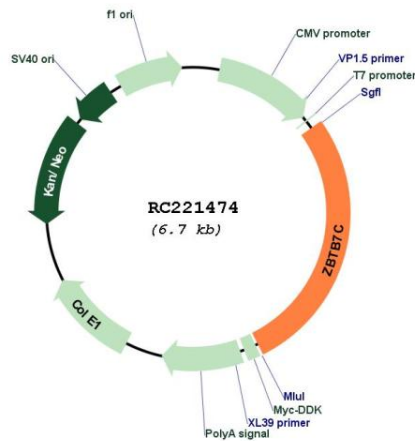
1. Centrifuge at 5,000xg for 5min.
2. Carefully open the tube and add 100ul of sterile water to dissolve the DNA.
3. Close the tube and incubate for 10 minutes at room temperature.
4. Briefly vortex the tube and then do a quick spin (less than 5000xg) to concentrate the liquid at the bottom.
5. Store the suspended plasmid at -20°C. The DNA is stable for at least one year from date of shipping when stored at -20°C.

RefSeq: [NM\\_001039360.3](#)

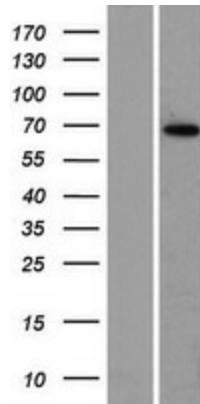
RefSeq Size: 3774 bp

RefSeq ORF: 1860 bp

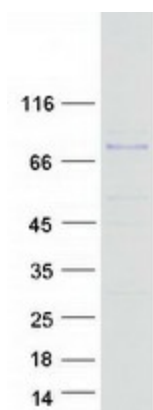
**Locus ID:** 201501  
**UniProt ID:** [A1YPRO](#)  
**Cytogenetics:** 18q21.1  
**MW:** 68.8 kDa  
**Gene Summary:** May be a tumor suppressor gene.[UniProtKB/Swiss-Prot Function]

**Product images:**


Circular map for RC221474



Western blot validation of overexpression lysate (Cat# [LY422035]) using anti-DDK antibody (Cat# [TA50011-100]). Left: Cell lysates from untransfected HEK293T cells; Right: Cell lysates from HEK293T cells transfected with RC221474 using transfection reagent MegaTran 2.0 (Cat# [TT210002]).



Coomassie blue staining of purified ZBTB7C protein (Cat# [TP321474]). The protein was produced from HEK293T cells transfected with ZBTB7C cDNA clone (Cat# RC221474) using MegaTran 2.0 (Cat# [TT210002]).