

Product datasheet for **RC221468L3V**

IRTA2 (FCRL5) (NM_031281) Human Tagged ORF Clone Lentiviral Particle

Product data:

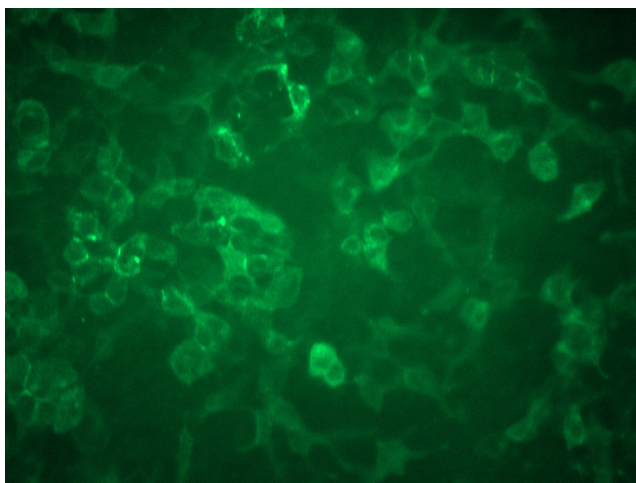
Product Type:	Lentiviral Particles
Product Name:	IRTA2 (FCRL5) (NM_031281) Human Tagged ORF Clone Lentiviral Particle
Symbol:	IRTA2
Synonyms:	BXMAS1; CD307; CD307e; FCRH5; IRTA2; PRO820
Mammalian Cell Selection:	Puromycin
Vector:	pLenti-C-Myc-DDK-P2A-Puro (PS100092)
Tag:	Myc-DDK
ACCN:	NM_031281
ORF Size:	2931 bp
ORF Nucleotide Sequence:	The ORF insert of this clone is exactly the same as(RC221468).
OTI Disclaimer:	The molecular sequence of this clone aligns with the gene accession number as a point of reference only. However, individual transcript sequences of the same gene can differ through naturally occurring variations (e.g. polymorphisms), each with its own valid existence. This clone is substantially in agreement with the reference, but a complete review of all prevailing variants is recommended prior to use. More info
OTI Annotation:	This clone was engineered to express the complete ORF with an expression tag. Expression varies depending on the nature of the gene.
RefSeq:	NM_031281.1
RefSeq Size:	5392 bp
RefSeq ORF:	2934 bp
Locus ID:	83416
UniProt ID:	Q96RD9
Cytogenetics:	1q23.1
Protein Families:	Transmembrane
MW:	106.3 kDa



[View online »](#)

Gene Summary:

This gene encodes a member of the immunoglobulin receptor superfamily and the Fc-receptor like family. This gene and several other Fc receptor-like gene members are clustered on the long arm of chromosome 1. The encoded protein is a single-pass type I membrane protein and contains 8 immunoglobulin-like C2-type domains. This gene is implicated in B cell development and lymphomagenesis. Alternatively spliced transcript variants encoding different isoforms have been identified. [provided by RefSeq, Sep 2010]

Product images:

[RC221468L3] was used to prepare Lentiviral particles using [TR30037] packaging kit. HEK293T cells were transduced with RC221468L3V particle to overexpress human FCRL5-Myc-DDK fusion protein.