

Product datasheet for RC221467

C1orf43 (NM_138740) Human Tagged ORF Clone

Product data:

Product Type: Expression Plasmids
Product Name: C1orf43 (NM_138740) Human Tagged ORF Clone
Tag: Myc-DDK
Symbol: C1orf43
Synonyms: HSPC012; NICE-3; NICE3; NS5ATP4; S863-3
Mammalian Cell Selection: Neomycin
Vector: pCMV6-Entry (PS100001)
E. coli Selection: Kanamycin (25 ug/mL)
ORF Nucleotide Sequence: >RC221467 representing NM_138740
 Red=Cloning site Blue=ORF Green=Tags(s)

TTTTGTAATACGACTCACTATAGGGCGGCCGGAATTCGTCGACTGGATCCGGTACCGAGGAGATCTGCC
 GCC**CGATCGCC**

ATGGCGTCCGGCAGTAACTGGCTCTCCGGGTGAATGTCGTGCTGGTGATGGCCTACGGGAGCCTGGACT
 TGAAAGAGGAGATTGATTCGACTCTCCAGGGTTCAGGATATCAAGTATGAGCCCCAGCTCCTTGAGA
 TGATGATGCTAGACTACTAACTGAAACCCAGGAAATCAAAAGATCCCATTTCATTCTGAAGGCCGG
 CATCCCGTTCTTAATGGCAAGAATTCGCTCCTACCTGCTGGATCTGCGAAACACTAGTACGCCTT
 TCAAGGGTGTACGCAAAGCACTATTGATACCCTTTGGATGGCTATGAAACAGCCCGCTATGGGACAGG
 GGTCTTTGGCCAGAATGAGTACCTACGCTATCAGGAGGCCCTGAGTGAGCTGGCCACTGCGGTTAAAGCA
 CGAATTGGGAGCTCTCAGCGACATCACCAGTCAAGAGCCTAACTCAGTCCCCTGAGGTCTCCC
 CAACAACCATCCAGGTGACATACCTCCCCTCCAGTCAAGAGATAAACGTGCCAAGCACTTCCTTGAATT
 GAAGAGCTTTAAGGATAACTATAACACATTGGAGAGTACTCTG

ACGCGTACGCGGCCGCTCGAGCAGAACTCATCTCAGAAGAGGATCTGGCAGCAATGATATCCTGGATT
 ACAAGGATGACGACGATAAGGTTTAA

Protein Sequence: >RC221467 representing NM_138740
 Red=Cloning site Green=Tags(s)

MASGSNWLSGVNVVLMAYGSLDLKEEIDIRLSRVQDIKYEPLLADDDARLLQLETQGNQKIPFHSEGR
 HPRSLMGKNFRSYLLDLRNTSTPFKGVKALIDTLLDGYETARYGTGVFGQNEYLRQYQALSELATAVKA
 RIGSSQRHHQSAAKDLTQSPEVPTTIQVYLPSSQKSKRAKHFLELKSFKDNYNTLESTL

TRTRPLEQKLISEEDLAANDILDYKDDDDKV



[View online »](#)

Chromatograms: https://cdn.origene.com/chromatograms/mk8012_c04.zip

Restriction Sites: SgfI-MluI

Cloning Scheme:



ACCN: NM_138740

ORF Size: 603 bp

OTI Disclaimer: The molecular sequence of this clone aligns with the gene accession number as a point of reference only. However, individual transcript sequences of the same gene can differ through naturally occurring variations (e.g. polymorphisms), each with its own valid existence. This clone is substantially in agreement with the reference, but a complete review of all prevailing variants is recommended prior to use. [More info](#)

OTI Annotation: This clone was engineered to express the complete ORF with an expression tag. Expression varies depending on the nature of the gene.

Components: The ORF clone is ion-exchange column purified and shipped in a 2D barcoded Matrix tube containing 10ug of transfection-ready, dried plasmid DNA (reconstitute with 100 ul of water).

Reconstitution Method:

1. Centrifuge at 5,000xg for 5min.
2. Carefully open the tube and add 100ul of sterile water to dissolve the DNA.
3. Close the tube and incubate for 10 minutes at room temperature.
4. Briefly vortex the tube and then do a quick spin (less than 5000xg) to concentrate the liquid at the bottom.
5. Store the suspended plasmid at -20°C. The DNA is stable for at least one year from date of shipping when stored at -20°C.

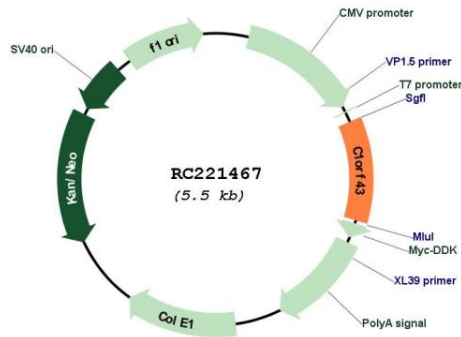
RefSeq: [NM_138740.4](#)

RefSeq Size: 1552 bp

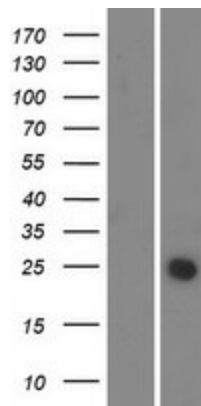
RefSeq ORF: 606 bp

Locus ID: 25912

UniProt ID: [Q9BWL3](#)
Cytogenetics: 1q21.3
Protein Families: Transmembrane
MW: 22.5 kDa
Gene Summary: General regulator of phagocytosis. Required to uptake Gram negative bacterium by macrophages.[UniProtKB/Swiss-Prot Function]

Product images:


Circular map for RC221467



Western blot validation of overexpression lysate (Cat# [LY408503]) using anti-DDK antibody (Cat# [TA50011-100]). Left: Cell lysates from untransfected HEK293T cells; Right: Cell lysates from HEK293T cells transfected with RC221467 using transfection reagent MegaTran 2.0 (Cat# [TT210002]).