

Product datasheet for RC221461

KDM5A (NM_001042603) Human Tagged ORF Clone

Product data:

Product Type:	Expression Plasmids
Product Name:	KDM5A (NM_001042603) Human Tagged ORF Clone
Tag:	Myc-DDK
Symbol:	KDM5A
Synonyms:	RBBP-2; RBBP2; RBP2
Mammalian Cell Selection:	Neomycin
Vector:	pCMV6-Entry (PS100001)
E. coli Selection:	Kanamycin (25 ug/mL)
ORF Nucleotide Sequence:	>RC221461 representing NM_001042603 Red=Cloning site Blue=ORF Green=Tags(s)

TTTTGTAATACGACTCACTATAGGGCGGCCGGAATTCGTCGACTGGATCCGGTACCGAGGAGATCTGCC
GCC**CGATCGCC**

ATGGCGGGCGTGGGGCCGGGGGCTACGCGCGGAGTTCGTGCCACCGCCAGAGTGCCCCGTCTTTGAGC
CGAGTTGGGAGGAGTTCACAGATCCGCTCAGCTTATCGGCCGCATCCGGCCTTTGGCGGAGAAAACCGG
CATCTGCAAAATTCGGCCGCCAAGGACTGGCAGCCTCCATTTGCCTGTGAAGTAAAAAGCTTTCGTTTC
ACTCCAAGAGTCCAGCGCTGAATGAATTGAGGCAATGACCAGAGTGAGATTGGATTTCTTGGATCAAC
TAGCAAAATTTGGGAACCTCAAGGATCTACTCTGAAGATCCCTGTGGTAGAGAGAAAAATCCTGGATCT
GTATGCTTTGAGCAAGATTGTTGCCAGCAAAGGAGTTTTGAAATGGTCACCAAAGAGAAGAAATGGTCT
AAAGTGGGTAGTCGCTTGGGATATCTGCCAGGAAAAGGAACTGGGTCTCTTTTGAAGTCACATTATGAAA
GAATTCTACCCATATGAGCTTTCCAGTCTGGTGTGAGCCTTATGGGTGTGCAGATGCCTAATTTAGA
TCTTAAAGAAAAGTGGAGCCTGAGGTTCTCAGCACTGATACCCAAACTCCCCAGAGCCAGGCACAAGG
ATGAACATTCTGCCGAAGAGAACAAGACGTGTGAAGACTCAGTCAGAATCTGGAGATGTGAGTAGAAACA
CGGAACGAAGAACTTCAGATTTTGGGGCTGGGCCAAGGTTGTGGGCTTGGCAATGGGAACAAAAGA
TAAAGAAGATGAGGTCACCCGAAGACGAAAAGTTACCAACAGGTCAGACGCATTTAACATGCAAAATGAGA
CAACGGAAAGGCACTCTCTGTTAACTTGTGATCTCTATGTTTGTATGTTTTGTGGTGGGGAACA
ATGAAGATAAATTGCTTTTGTGTGATGGATGTGATGACAGCTATCATACTTTTGTCTAATTCCTCACT
ACCTGATGTGCCAAAGGAGACTGGAGGTGCCTAAATGTGTCGCCGAGGAATGTAGCAAACCTCGAGAA
GCCTTTGGATTTGAACAAGCTGTACGAGAGTATACACTTCAGAGCTTTGGAGAGATGGCAGATAATTTTA
AGTCTGATTATTTAATATGCCAGTCCATATGGTCCACAGAAGTGTAGAAAAGGAATTTTGGCGGCT
GGTAAGCAGCATTGAAGAAGATGTTATTGTGGAATATGGAGCAGATATCTCTCAAAGACTTTGGAAGT
GGATTTCCGGTGAAGGATGGCGGAGAAAGATTCTGCCAGAAGAAGGAATATGCACCTTCTGTTGGA
ATTTGAATAACATGCCTGCTCTGGAACAGTCTGTTCTTGCACATATTAATGTGGACATCTCTGGTATGAA
AGTGCCGTGGCTCTATGTGGGAATGTGCTTCTCTTTTGTGTCACATTGAGGATCACTGGAGTTAT



[View online >](#)

TCCATCAACTACTTGCCTGGGGGAGCCAAAGACATGGTATGGTGTGCCATCTCATGCTGCAGAGCAAC
 TGGAGGAGGTGATGAGAGAGCTGGCCCCGAGTTATTTGAATCCCAGCCTGATCTTCTGCATCAGTTAGT
 TACCATCATGAACCCCAACGTGCTAATGGAGCATGGTGTGCCGTGTGTACAGGACCAATCAGTGTGCTGGC
 GAGTTTGTGTGACATTTCTCGTGCCTATCACTCTGGATTTAACAGGGCTACAACCTTGTCTGAAGCTG
 TGAATCTGTACTGTGACTGGTTGCCATTGGACGTCAATGTGTAATCATTACCGACGCCTAAGGCG
 CCACTGTGTCTTTTACACGAGGAATAATTTCAAGATGGCAGCAGATCCAGAATGCTTAGATGTGGG
 CTGGCTGCCATGGTCTGCAAAGAATTGACTCTCATGACTGAAGAAGAAACACGATTAAGAGAGTCTGTTG
 TACAGATGGGTGCTGATGTCAGAAGAAGAAGTGTGAACTTGTCTGATGATGAGCGGCAAGTGTTC
 AGCATGCAGAACCACATGTTTTCTCTGCTCTCACATGTTCTGTAATCCTGAGCGCTTGTATGTCTC
 TACCATCCAACTGATCTGTGCCCTGCCCATGCAGAAGAAATGTCTTAGATATCGCTACCCATTAGAAG
 ACCTCCCTTCTGCTATATGGTGTAAAAGTCAGGGCACAGTCTATGACACTTGGGTGAGTGTGTTAC
 AGAAGCATTGTCTGCTAACTTCAACCACAAAAAGATTTGATTGAATTGCGAGTATTGCTGGAAGATGCT
 GAGGATAGGAAATACCCAGAGAATGATCTTTTCAAAAACAGGGATGCTGTAAAAGAAGCTGAGACCT
 GTGCTTCTGTGGCTCAGCTGCTTCTGAGCAAAAAGCAGAAACACAGACAGAGCCAGATAGTGGGAGGAC
 TCGGACCAAACTGACAGTGAAGAATTGAAGGCCTTTGTCCAACAACCTTTTAGTCTTCCGTGTGCATC
 AGCCAAGCTCGGCAAGTAAAGAATCTGCTAGATGATGTGAAGAGTTCATGAACGTGCTCAGGAGGCCA
 TGATGGATGAAACCCAGATTCTTCAAACTCCAGATGTTGATAGATATGGGCTCTAGTCTCTATGTGGA
 ACTCCCTGAATTACCACGACTGAAGCAAGAGCTACAACAGGCTCGGTGGTTGGACGAAGTAAAGCTGACC
 TTATCAGATCCGCAACAAGTCACTTTGGATGTCATGAAGAAGCTGATAGACTCTGGGGTAGGGTTGGCAC
 CCCACCATGCTGTGGAGAAAGCAATGGCTGAACACAGGAGTCTTACAGTCTCTGAACGATGGGAAGA
 AAAGGCTAAGGTCTGCCTACAGGCAAGACCGAGGCACAGTGTGCAAGTTTAGAAAGCATTGTGAATGAA
 GCCAAGAACATCCAGCCTTTCTACCAATGTGTTGCTTGAAGAAGCCTTACAAAAGCTCGAGAAT
 GGACCGCTAAAGTGAAGCTATTCAGAGTGGCAGCAATACGCTTATTTGGAGCAGCTTGAGAGTGTCT
 TCGGAAAAGGACGCCCTATTCTGTGCGTCTTGAAGCACTGCCGCAAGTGAATCACAGGTAGCAGCAGCA
 CGGGCATGGAGAGAACGGACTGGGCGGAGCTTTCTTAAGAAGAATTCTAGCCATACATTGTTACAGGTGC
 TGAGCCCCGGACCGACATTGGTGTATATGGGAGTGGCAAAAATAGGAGGAAAAAGTAAAAAGAACTAAT
 AGAAAAAGAAAAAGAAAAGGATCTGGACCTGGAGCCTCTGAGTGTCTGGAGGAAGGATTGGAGGAAACC
 AGAGATACAGCCATGGTGGTGGCAGTTTTCAAAGAACGGGAGCAAAAAGAGATTGAAGCCATGCATTCTC
 TCAGAGCAGCCAACTAGCCAAGATGACAATGGTGGACCCATAGAAGAAGTAAAATTTGCATTTGCCG
 CAAGACAGCCAGTGGTTATGCTACAGTGTGAGCTCTGCAAAGACTGGTCCATAACAGCTGTGTTCTCT
 CTTCTAAATCAAGTTCCAAAAAAAAGGATCCAGCTGGCAAGCTAAAGAAGTAAAATTCCTTTGCCCTC
 TTTGATGCGGTCTCGAAGGCCAGGCTAGAGACTATTCTGTCACTCCTGGTATCCCTTCAGAAGTTGCC
 CGTACGGTTGCCCTGAAGGAGAGGCCCTGCAGTGTGGACAGAACGTGCTATGAGTTGGCAAGATAGAGCG
 CGGCAGGCTCTAGCCACAGATGAACTATCCTCTGCCCTGGCCAACTATCTGTGTTGAGCCAGCGTATGG
 TGGAACAGGCGGCTCGAGAAAAAAGTAAAAGATCATCAGTGCAGAACTCCAAAAAGCAGCTGCCAATCC
 AGACTTACAGGGACACTTACCTAGTTTCCAGCAGTCTGCTTTAACCGGGTGGTGAAGCAGTGTGTCATCT
 TCTCCTCGACAAACAATGGACTATGATGATGAAGAACAGACTCTGATGAAGACATTCGAGAGACATATG
 GCTACGACATGAAGGACACAGCCAGTGTGAAGTCTCTAGTAGTCTTGAACCCAATCTTTTTGTGATGA
 AGAGATTCCATCAAATCTGAGGAGTGGTGACCCACATGTGGACAGCACCTTCATTTTGTGACAGCAT
 GCTTATTCTTCTGCTTCTAAGAGTTGTTCTCAAGTTCTAGCACCCCAAGGAAACAACCTCGGAAGAGCC
 CTTTGGTGGCCCGAAGTTTGAACCTCCAGTGTGGAGTGTACCTGGAGCTAAGGCACAACCTGGAAGA
 ACTTATGATGGTTGGAGATCTCCTGGAAGTATCTCTGGACGAGACTCAACACATATGGCGGATTTTGCAG
 GCCACACACCCACCTCTGAAGACAGATTCTTGCATATCATGGAGGATGACAGCATGGAAGAGAAACCAC
 TAAAAGTGAAGGAAAGGACTCTTCAAGAGAAGAAACGGAAACGGAAAGCTAGAAAAGGTAGAGCACTTTT
 TGGAGAAGGAAAAAGAGTCCAAGGAGTTAAAGAAAAAGGACAAACCTAGAAAAGAAAGAAATTAATAA
 GGTGCAGACAAAACAAAGGAGCTGAATAAACTGGCCAAGAACTAGCAAAAAGAAAGAGAGAAAAGAAAA
 AGAAGGAGAAGGCTGCTGCAGCCAAAGTGAACCTGTGAAAGAGAGCACTGAAAAGAAAAGAGAGAAAA
 GGTGCTGGACATCCCCTCAAAGTATGACTGGTCAAGGAGCAGAGGAGTCTGATGATGAGAATGCTGTGTGC
 GCAGCACAGAAGTGCAAAGGCCCTGCAAGGACAAGGTAGACTGGGTACAATGTGATGGTGGCTGTGATG
 AGTGGTTTTCATCAAGTTTGTGTGGTGTATCTCCAGAAATGGCTGAAAATGAAGATTACATCTGTATAAA
 CTGTGCAAAGAAGCAGGGGCCAGTTAGCCAGGTCACAGCACCACTCCTTCTTCATAATGAGCTACAAA
 CTACCAATGGAGGATCTTAAAGAGACCAGT

ACGCGTACGCGGCCGCTCGAGCAGAACTCATCTCAGAAGAGGATCTGGCAGCAATGATATCCTGGATT
ACAAGGATGACGACGATAAGGTTAA

Protein Sequence:

>RC221461 representing NM_001042603

Red=Cloning site Green=Tags(s)

MAGVGGGYAAEFVPPPECPVFEPSSWEFTDPLSFIGRIRPLAEKTGICKIRPPKDWQPPFACEVKSFRF
TPRVQRLNELEAMTRVRLDFLDQLAKFWELQGSTLKIIPVVERKILDLYALSKIVASKGGFEMVTKEKKWS
KVGSRLLGYPGKGTGSLKSHYERILYPYELFQSGVSLMGVQMPNLDLKEKVEPEVLSTDTQTSPEPGTR
MNILPKRTRRVKTQSESGDVSRELKLLQIFGAGPKVVLAMGTGKDEDEVTRRRKVTNRSDAFNMQMR
QRKGTLSVNFVDLYVCMFCGRGNNEKLLLCDGCDDSYHTFCLIPPLPDVPGKDWRCPCVAAEESKPRE
AFGFEQAVREYTLQSFEMADNFKSDYFNMPVHMVPTLVEKEFWRLVSSIEEDVIVEYGADISSKDFGS
SINYLHWGEPKTYGVP SHAAEQLEEVRELAPEL FESQPDLLHQLVTIMNPVLMHGVPPYRTNQACAG
EFVVTFFRAYHSGFNQGYNAEAVNFCTADWLP IGRQCVNHYRRLRRHCVF SHEELIFKMAADPECLDVG
LAAMVCKELTLMTEETRLRESVVQMGVLMSEEEVFELVPDDERQCSACRTTCFLSALTCSCNPERLVCL
YHPTDLCPCPMQKCLRYRPLEDLPSLLYGKVKVRAQSYDTWVSRVTEALSANFNHKKDLIELRVLLEDA
EDRKYPENDLFRKLRDAVKEAETCASVAQLLLSKKQKHRQSPDSGRTRTKLVEELKAFVQQLFSLPCVI
SQARQVKNLLDDVEEFHERAQEAMMDETPDSSKLQMLIDMGSSLYVELPELPRKQELQQARWLDEVRLT
LSDPQQVTLDMKKLIDSGVGLAPHHAVEKAMAELQELLTVSERWEEKAKVCLQARPRHSVASLESIVNE
AKNIPAFLPNVL SLKEALQKAREWTAKEAIQSGSNYAYLEQLESL SAKGRPIPVRLEALPQVESQVAAA
RAWRERTGRTFLKKNSSHTLLQVLSPRTDIGVYSGGNRRKVKELIEKEKEKDLLEPLSDLEEGL EET
RDTAMVVAVFKEREQKEIEAMHSLRAANLAKMTMVDRIEEVKFCICRKTASGFMLQCELCCKDWFHNSCVP
LPKSSSQKKGSSWQAKEVKFLCPLCMRSRRPRLETILSLLVSLQKLPVRLPEGEALQCLTERAMSWQDRA
RQALATDELSSALAKLSVL SQRMVEQAAREKTEKII SAELQKAAANPDLQGHLP SFQQSFAFNRVVSSVSS
SPRQTM DYDDEETDSDEDI RETYGYDMKDTASVKS SSSLEPNLFCDEEIP IKSEEVVTMMWTAPSFC AEH
AYSSASKSCSQSSTPRKQPRKSPLVPRSLEPPVLELSPGAKAQLEELMMVGDLELVSLDETQHIWRILQ
ATHPPSEDRFLHIMEDDSMEKPLKVKGKDSSEKKRKRKLEKVEQLFGEKQKSKELKKMDKPRKKLKL
GADKSKELNKLAKKLAKKEERKKKKEKAAAKVELVKESTEKKREKKVLDIPSKYDWSGAEESDDENAVC
AAQNCQRPCDKVDWVQCDGGCDEWFHQVCVGVSPEMAENEDYICINCAKKQGPVSPGPAPPPSIFMSYK
LPMEDLKETS

TRTRPLEQKLISEEDLAANDILDYKDDDDKV

Chromatograms:

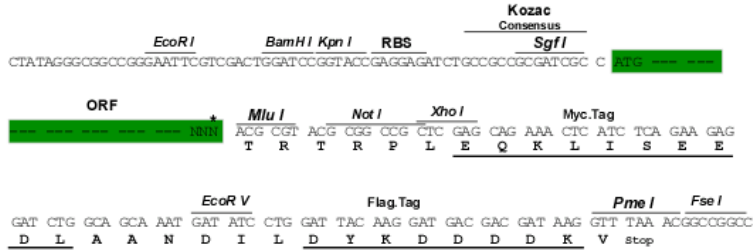
https://cdn.origene.com/chromatograms/ja1928_h07.zip

Restriction Sites:

SgfI-MluI

Cloning Scheme:

Cloning sites used for ORF Shuttling:

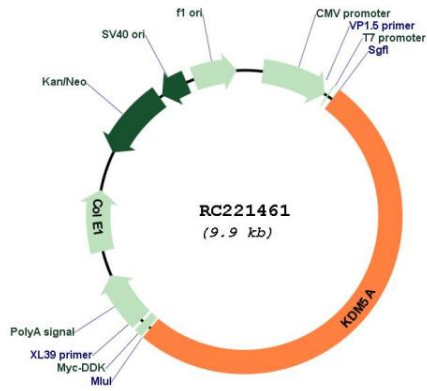


* The last codon before the Stop codon of the ORF

ACCN: NM_001042603
ORF Size: 5070 bp

OTI Disclaimer:	<p>Due to the inherent nature of this plasmid, standard methods to replicate additional amounts of DNA in E. coli are highly likely to result in mutations and/or rearrangements. Therefore, OriGene does not guarantee the capability to replicate this plasmid DNA. Additional amounts of DNA can be purchased from OriGene with batch-specific, full-sequence verification at a reduced cost. Please contact our customer care team at custsupport@origene.com or by calling 301.340.3188 option 3 for pricing and delivery.</p> <p>The molecular sequence of this clone aligns with the gene accession number as a point of reference only. However, individual transcript sequences of the same gene can differ through naturally occurring variations (e.g. polymorphisms), each with its own valid existence. This clone is substantially in agreement with the reference, but a complete review of all prevailing variants is recommended prior to use. More info</p>
OTI Annotation:	<p>This clone was engineered to express the complete ORF with an expression tag. Expression varies depending on the nature of the gene.</p>
Components:	<p>The ORF clone is ion-exchange column purified and shipped in a 2D barcoded Matrix tube containing 10ug of transfection-ready, dried plasmid DNA (reconstitute with 100 ul of water).</p>
Reconstitution Method:	<ol style="list-style-type: none">1. Centrifuge at 5,000xg for 5min.2. Carefully open the tube and add 100ul of sterile water to dissolve the DNA.3. Close the tube and incubate for 10 minutes at room temperature.4. Briefly vortex the tube and then do a quick spin (less than 5000xg) to concentrate the liquid at the bottom.5. Store the suspended plasmid at -20°C. The DNA is stable for at least one year from date of shipping when stored at -20°C.
RefSeq:	NM_001042603.3
RefSeq Size:	10835 bp
RefSeq ORF:	5073 bp
Locus ID:	5927
UniProt ID:	P29375
Cytogenetics:	12p13.33
Protein Families:	Druggable Genome
MW:	191.9 kDa
Gene Summary:	<p>This gene encodes a member of the Jumonji, AT-rich interactive domain 1 (JARID1) histone demethylase protein family. The encoded protein plays a role in gene regulation through the histone code by specifically demethylating lysine 4 of histone H3. The encoded protein interacts with many other proteins, including retinoblastoma protein, and is implicated in the transcriptional regulation of Hox genes and cytokines. This gene may play a role in tumor progression. [provided by RefSeq, Aug 2013]</p>

Product images:



Circular map for RC221461