

Product datasheet for **RC221449**

ACCSL (NM_001031854) Human Tagged ORF Clone

Product data:

Product Type:	Expression Plasmids
Product Name:	ACCSL (NM_001031854) Human Tagged ORF Clone
Tag:	Myc-DDK
Symbol:	ACCSL
Mammalian Cell Selection:	Neomycin
Vector:	pCMV6-Entry (PS100001)
E. coli Selection:	Kanamycin (25 ug/mL)



[View online »](#)

ORF Nucleotide Sequence:

>RC221449 representing NM_001031854
 Red=Cloning site Blue=ORF Green=Tags(s)

TTTTGTAATACGACTCACTATAGGGCGGCCGGGAATTCGTCGACTGGATCCGGTACCGAGGAGATCTGCC
 GCC**CGGATCGCC**

ATGAGTCATCGGTCAGACACCCCTTCTGTGCCCTCTGGTCAGAGGAGAGGCCGGGTCCCCAGAGACCACA
 GCATCTATACCCAGCTGTTGGAGATAACGCTGCACTTGCAGCAGGCCATGACGGAGCACTTCGTGCAGCT
 GACGAGCAGACAGGGCCTGTCGCTGGAGAAAGGAGGCACACTGAGGCCATCTGTGAGCATGAAGCCCTT
 CTGAGTCGCTTAATATGCCGGATGATCAACCTCTACAGTCTGGGGCCGCGAGTGGCCTGGAGCTCCAAG
 TGCCTCTTCTTCTGAGGACTCTAGGGGTGATGTCAGATATGGGCAGAGGGCCCAACTCTCTGGGCAGCC
 TGATCCAGTTCGCCAACTGAGTGATTGTGAAGTGCCTTTGTCAACCGCGACCTATCCATCCGTGGGATT
 GACATCTCTGTCTTTATCAGTCGAGCTTCCAGGACTACAATGCCTACCAAAAAGATAAAATCATAAGG
 ACAAGAACACCTTGGGTTTCATTAACTTGGCACCAGTGAGAACAAGCTCTGCATGGATCTGATGACTGA
 AAGATTGCAAGAAAGTGACATGAACTGCATTGAGGACACCTTGTTCAGTACCCTGATTGGAGAGGGCAG
 CCATTCTGCGGGAAGAAGTGGCCCGGTTCTGACCTACTACTGCAGGGCACCTACCCGACTTGACCCAG
 AAAATGTGGTGGTTCTAAATGGCTGCTGCTCTGTCTTCTGTGCCCTGGCCATGGTTCTGTGTGATCCAGG
 CGAGGCCCTTCTGGTCCCTGCTCCCTTCTATGGTGGCTTTGCCTTAGCTCCCGCCTGTATGCAAAGGTT
 GAGTTGATTCTGTCCACCTGGAGAGTGAGGTCCTGTTACAAACACCCATCCTTTCCAGCTCACTGTGG
 ACAAGTTAGAGGAAGCCCTGCTTGAAGCTAGGCTTGGGGGAAAAAGGTCGAGGCCCTGTGCTAATCAA
 CCCTCAGAATCCTCTGGGTGACATCTACTCCCCAGACTCACTGATGAAATACCTGGAATTTGCCAAGAGG
 TATAACCTACATGTGATCATAGATGAGATTTACATGCTGTCTGTGTTTGTGAATCCATCACATTCACA
 GCATTCTGAGCATGAAAAGTTTGCTGATAGCAACAGGACCCATGTGATCTGGGGTACCAGTAAGGATTT
 TGGCATCTCTGGCTCCGCTTTGGTCTGTATACCCACAACAAGGAGGTGGCCCTCTGCTGTGAGTGCC
 TTTGGCTACCTCCACAGTATTTCTGGCATCACCCAGCACAGCTGTGCAACTGCTCCAGAACACAGAAT
 GGATTGACAAAGTATACCTACCCACCAATTGCTACCGGCTCCGGGAAGCTCACAAGTACATCACTGCTGA
 GCTGAAGGCATTGGAGATCCCTTTTACAACCGCAGCTCTGGCCTCTATGTCTGGATCAACTGAAAAAG
 TACCTGGATCCCTGTACATTTGAAGAAGAACGGCTCCTCTATTGCCGCTTCTGGACAACAAGCTATTGT
 TATCCCGTGGCAAACCTACATGTGAAGGAGCCAGGCTGGTTCTGCCTCATCTTTCAGATGAGCTCCC
 CCGGCTAAAATTGGCTATGCGTCGGTCTGTGATGTGCTGCAGGAGCAGAAGGAGGCTTTGATAGTGAAG
 CAGTTGGAGGATGCAATGAGGGAG

ACGCGTACGCGGCCGCTCGAGCAGAAACTCATCTCAGAAGAGGATCTGGCAGCAAATGATATCCTGGATT
 ACAAGGATGACGACGATAAGGTTTAA

Protein Sequence:

>RC221449 representing NM_001031854
 Red=Cloning site Green=Tags(s)

MSHRSDTLVPVPSGQRRGRVPRDHSIYTLLEITLHLQQAMTEHFVQLTSRQGLSLEERRHTEAICEHEAL
 LSRLICRMINLLQSGAASGLELQVPLPSEDSRQDVRYGQRAQLSGQPDVPVQLSDCEAAFVNRDLSIRGI
 DISVFIYQSSFQDYNAYQKDKYHKDKNTLGFINLGTSENKLCMDLMTERLQESDMNCIEDTLLQYPDWRGQ
 PFLREEVARFLTYCRAPTRLDPENVVVNLGCCSVFCALAMVLCDPGEAFLVPAPFYGGFAFSSRLYAKV
 ELIPVHLESEVTVTNTHPFQLTVDKLEEALLEARLEGGKVRGLVLPINQNLGDIYSPDSLMLKYLEFAKR
 YNLHVIIDEIYMLSVFDESITFHSILSMKSLPDSNRTHVWIGTSKDFGISGFRFGALYTHNKEVASAVSA
 FGYLHSISGITQHKLCQLLQNTIEWIDKVYLPNTCYRLREAHKYITAELKALEIPFHNRSGLYVWLNKK
 YLDPCTFEERLLYCRFLDNKLLL SRGKTYMCKEPGWFLIFADELPRLKLMARRRCDVLQEQKEALIVK
 QLEDAMRE

TRTRPLEQKLISEEDLAANDILDYKDDDDKV

Chromatograms:

https://cdn.origene.com/chromatograms/mk8042_h03.zip

Restriction Sites:

SgfI-MluI

Cloning Scheme:


ACCN: NM_001031854

ORF Size: 1704 bp

OTI Disclaimer: The molecular sequence of this clone aligns with the gene accession number as a point of reference only. However, individual transcript sequences of the same gene can differ through naturally occurring variations (e.g. polymorphisms), each with its own valid existence. This clone is substantially in agreement with the reference, but a complete review of all prevailing variants is recommended prior to use. [More info](#)

OTI Annotation: This clone was engineered to express the complete ORF with an expression tag. Expression varies depending on the nature of the gene.

Components: The ORF clone is ion-exchange column purified and shipped in a 2D barcoded Matrix tube containing 10ug of transfection-ready, dried plasmid DNA (reconstitute with 100 ul of water).

- Reconstitution Method:**
1. Centrifuge at 5,000xg for 5min.
 2. Carefully open the tube and add 100ul of sterile water to dissolve the DNA.
 3. Close the tube and incubate for 10 minutes at room temperature.
 4. Briefly vortex the tube and then do a quick spin (less than 5000xg) to concentrate the liquid at the bottom.
 5. Store the suspended plasmid at -20°C. The DNA is stable for at least one year from date of shipping when stored at -20°C.

RefSeq: [NM_001031854.2](#), [NP_001027025.2](#)

RefSeq Size: 1820 bp

RefSeq ORF: 1707 bp

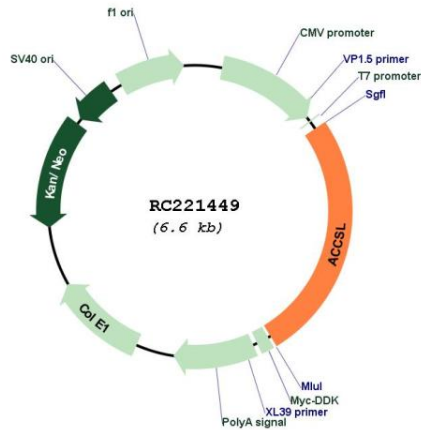
Locus ID: 390110

UniProt ID: [Q4AC99](#)

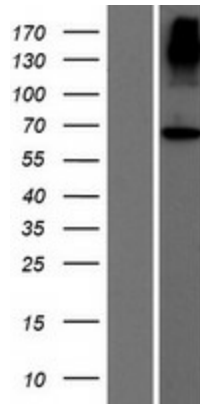
Cytogenetics: 11p11.2

MW: 65.1 kDa

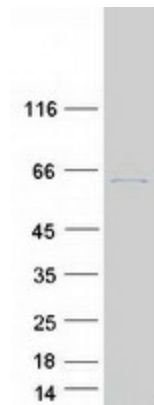
Product images:



Circular map for RC221449



Western blot validation of overexpression lysate (Cat# [LY422209]) using anti-DDK antibody (Cat# [TA50011-100]). Left: Cell lysates from untransfected HEK293T cells; Right: Cell lysates from HEK293T cells transfected with RC221449 using transfection reagent MegaTran 2.0 (Cat# [TT210002]).



Coomassie blue staining of purified ACCSL protein (Cat# [TP321449]). The protein was produced from HEK293T cells transfected with ACCSL cDNA clone (Cat# RC221449) using MegaTran 2.0 (Cat# [TT210002]).