

## Product datasheet for **RC221437**

### **LRRC15 (NM\_130830) Human Tagged ORF Clone**

#### **Product data:**

Product Type:	Expression Plasmids
Product Name:	LRRC15 (NM_130830) Human Tagged ORF Clone
Tag:	Myc-DDK
Symbol:	LRRC15
Synonyms:	LIB
Mammalian Cell Selection:	Neomycin
Vector:	pCMV6-Entry (PS100001)
E. coli Selection:	Kanamycin (25 ug/mL)



[View online »](#)

**ORF Nucleotide Sequence:**

>RC221437 ORF sequence  
 Red=Cloning site Blue=ORF Green=Tags(s)

TTTTGTAATACGACTCACTATAGGGCGGCCGGAATTCGTCGACTGGATCCGGTACCGAGGAGATCTGCC  
 GCC**CGGATCGCC**

ATGCCACTGAAGCATTATCTCCTTTTGGCTGGTGGGCTGCCAAGCCTGGGGTGCAGGGTTGGCCTACCATG  
 GCTGCCCTAGCGAGTGTACCTGCTCCAGGGCCTCCCAGGTGGAGTGCACCGGGGCACGCATTGTGGCAGT  
 GCCCACCCCTCTGCCCTGGAACGCCATGAGCCTGCAGATCCTCAACACGCACATCACTGAACTCAATGAG  
 TCCCCGTTCTCAATATCTCAGCCCTCATCGCCCTGAGGATTGAGAAGAATGAGCTGTCGCGCATCACGC  
 CTGGGGCCTTCCGAAACCTGGGCTCGTGCCTATCTCAGCCTCGCCAACAACAAGCTGCAGGTTCTGCC  
 CATCGGCCTCTCCAGGGCCTGGACAGCCTCGAGTCTCTCCTTGTCCAGTAACCAGCTGTTGCAGATC  
 CAGCCGGCCACTTCTCCAGTGCAGAACCTCAAGGAGCTGCAGTTGCACGGCAACCACCTGGAATACA  
 TCCCTGACGGAGCCTTCGACCACCTGGTAGGACTCACGAAGCTCAATCTGGGCAAGAATAGCCTCACCCA  
 CATCTCACCCAGGGTCTCCAGCACCTGGGCAACCTCCAGTCTCCGGTGTATGAGAACAGGCTCAGG  
 GATATCCCATAGGCACTTTTGTGGGCTTGTAACTGCAGGAACTGGCTCTGCAGCAGAACAGATTG  
 GACTGCTCTCCCCTGGTCTCTTCCACAACAACCACAACCTCCAGAGACTCTACCTGTCCAACAACCACAT  
 CTCCCAGCTGCCACCCAGCGTCTTCATGCAGCTGCCCCAGCTCAACCGTCTTACTCTCTTTGGGAATTC  
 CTGAAGGAGCTCTCTCCGGGATCTTCCGGGCCATGCCAACCTGCGGGAGCTTTGGCTCTATGACAACC  
 ACATCTCTTCTACCCGACAATGTCTTCAGCAACCTCCGCCAGTTGCAGGTCTGATTCTTAGCCGCAA  
 TCAGATCAGTTCATCTCCCGGGTGCCTTCAACGGGCTAACGGAGCTTCGGGAGCTGTCCCTCCACACC  
 AACGCAGTGCAGGACCTGGACGGGAACGTCTCCGCATGTTGCCAACCTGCAGAACATCTCCCTGCAGA  
 ACAACCGCTCAGACAGCTCCAGGGAATATCTTCGCCAACGTCAATGGCCTCATGGCCATCCAGTGCAG  
 GAACAACCGCTGGAGAACTTGCCCTCGGTATCTTCGATCACCTGGGAAACTGTGTGAGCTGCGGCTG  
 TATGACAATCCCTGGAGGTGTGACTCAGACATCCTTCCGCTCCGCAACTGGCTCTGCTCAACCAGCCTA  
 GGTAGGGACGGACACTGTACCTGTGTGTTTCCAGCCAGCCAATGTCGAGGCCAGTCCCTCATTATCAT  
 CAATGTCAACGTTGCTGTTCCAAGCGTCCATGTCCCGAGGTGCCTAGTTACCCAGAAACACCATGGTAC  
 CCAGACACACCCAGTTACCCTGACACCACATCCGTCTCTTCTACCACTGAGCTAACCCAGCCCTGTGGAAG  
 ACTACACTGATCTGACTACCATTAGGTCAGTACTGATGACCCGAGCGTTTGGGGCATGACCCAGGCCAGAG  
 CGGGCTGGCCATTGCCGCCATTGTAATTGGCATTGTGCCCTGGCTGCTCCCTGGCTGCCTGCGTCCGG  
 GTTGCTGCTGCAAGAAGAGGAGCAAGCTGCTCTGATGCAGATGAAGGCACCCAATGAGTGT

**ACGCGT**ACGCGGGCCGCTCGAGCAGAAACTCATCTCAGAAGAGGATCTGGCAGCAAATGATATCCTGGATT  
 ACAAGGATGACGACGATAAGGTTTAA

**Protein Sequence:**

>RC221437 protein sequence  
 Red=Cloning site Green=Tags(s)

MPLKHYLLLLVGCQAWGAGLAYHGCPSECTCSRASQVECTGARIVAVPTPLPWNAMSLQILNTHITELNE  
 SPFLNISALIALRIEKNELSRITPGAFRNLGSLRYLSLANNKLQVLPIGLFQGLDSLESLLLSSNQLLQI  
 QPAHFSQCSNLKELQLHGNHLEYIPDGAFDHLVGLTKLNLGKNSLTHISPRVFQHLGNLQVLRLEYNRLT  
 DIPMGTFDGLVNLQELALQQNQIGLLSPGLFHNNHNLQRLYL SNNHISQLPPSVFMQLPQLNRLTLFGNS  
 LKELSPGIFGMPMNLRELWL YDNHISLDPNVF SNLRQLQVLI LSRNQISFISPGA FNGL TELRELSLHT  
 NALQDL DGNVFRMLANLQNISLQNNRLRQLPGNIFANVNGLMAIQLNQNLLENPLGIFDHLGKLCERL  
 YDNPWRCDSDILPLRNWLLL NQPRLGDTVPVCFSPANVRGQSLII INVNVAVPSVHVPEVPSYPETPWY  
 PDTSPYDPTTSVSSTTELTSPVEDYTDLTTIQVTD DRSVWGMTQAQSGLAIAAIVIGIVALACSLAACV  
 G CCCCCKRSQAVLMQMKAPNEC

**TR**TRPLEQKLISEEDLAANDILDYKDDDDKV

**Chromatograms:**

[https://cdn.origene.com/chromatograms/mk6747\\_c12.zip](https://cdn.origene.com/chromatograms/mk6747_c12.zip)

**Restriction Sites:**

Sgfl-Mlul

**Cloning Scheme:**


**ACCN:** NM\_130830

**ORF Size:** 1743 bp

**OTI Disclaimer:** The molecular sequence of this clone aligns with the gene accession number as a point of reference only. However, individual transcript sequences of the same gene can differ through naturally occurring variations (e.g. polymorphisms), each with its own valid existence. This clone is substantially in agreement with the reference, but a complete review of all prevailing variants is recommended prior to use. [More info](#)

**OTI Annotation:** This clone was engineered to express the complete ORF with an expression tag. Expression varies depending on the nature of the gene.

**Components:** The ORF clone is ion-exchange column purified and shipped in a 2D barcoded Matrix tube containing 10ug of transfection-ready, dried plasmid DNA (reconstitute with 100 ul of water).

**Reconstitution Method:**

1. Centrifuge at 5,000xg for 5min.
2. Carefully open the tube and add 100ul of sterile water to dissolve the DNA.
3. Close the tube and incubate for 10 minutes at room temperature.
4. Briefly vortex the tube and then do a quick spin (less than 5000xg) to concentrate the liquid at the bottom.
5. Store the suspended plasmid at -20°C. The DNA is stable for at least one year from date of shipping when stored at -20°C.

**RefSeq:** [NM\\_130830.5](#)

**RefSeq Size:** 5883 bp

**RefSeq ORF:** 1746 bp

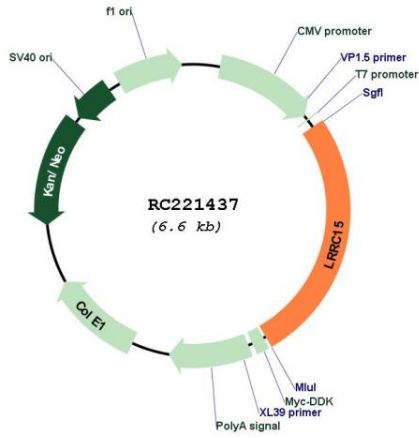
**Locus ID:** 131578

**UniProt ID:** [Q8TF66](#)

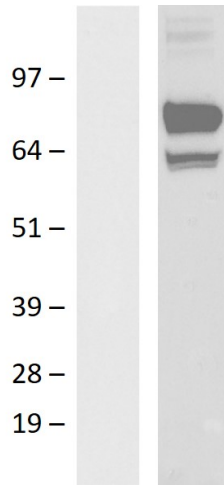
**Cytogenetics:** 3q29

Protein Families: Transmembrane  
 MW: 64.4 kDa

**Product images:**



Circular map for RC221437



Western blot validation of overexpression lysate (Cat# [LY408905]) using anti-DDK antibody (Cat# [TA592569]). Left: Cell lysates from untransfected HEK293T cells; Right: Cell lysates from HEK293T cells transfected with RC221437 using transfection reagent PEI.