

Product datasheet for RC221431

C19orf75 (SIGLECL1) (NM_173635) Human Tagged ORF Clone

Product data:

Product Type: Expression Plasmids
Product Name: C19orf75 (SIGLECL1) (NM_173635) Human Tagged ORF Clone
Tag: Myc-DDK
Symbol: C19orf75
Synonyms: C19orf75; SIGLEC23P; SIGLECP7
Mammalian Cell Selection: Neomycin
Vector: pCMV6-Entry (PS100001)
E. coli Selection: Kanamycin (25 ug/mL)
ORF Nucleotide Sequence: >RC221431 ORF sequence
 Red=Cloning site Blue=ORF Green=Tags(s)

TTTTGTAATACGACTCACTATAGGGCGCCGGAATTCGTCGACTGGATCCGGTACCGAGGAGATCTGCC
 GCCCGGATCGCC

ATGCTTCCACTGCTACAGCTGGTACCTGCTAAGCTGCTCAACTCCTCTTGCTCCTGGAGAAGACTGC
 AGTGCAGCTGTTCTTCCATGGGATTCACACCCCTGTGTCAGTGGTGGATGGGAGGAGTCCCCGTGGG
 TGTGGATGGCATGGATGGCAGCCTCCAAGTGACTTCCACCATGCTGGCCCTGGGCTAACAGCACCATC
 AGCCTAACTGAAGAGCCAGAAAATGGCATGAGACTTCTCTGTGAGGGGAAGAACAAAACGGAACCCATG
 CTTTGAGCATCCTACTGATGTCAAGAAAGAGTTCTTTGGCTGCCAGGCCTTCGTGAAAGGGCTGATCCA
 GGGTGCTATCTATGCGGGAATTGTAATTGCGCTGCTTTCCTCTGCCTCCTCCCTCTCATAGTGAACAT
 ATCAGAAAAGAAGCAGGCGAAGAAAGCTGCAGCGATCAGAGCAAAAAGAGCTCTAAAGTCAGAGCAAGCC
 AAGAACTTGAGATGTCTCTGAAGCCTGAGGAACCGAAAACCCGTAGTCGCCACATTTTCTGAGAGCCG
 GATATTGGAAAAGCAAGATAAACGAGCCAGC

ACGCGTACGCGGCCGCTCGAGCAGAACTCATCTCAGAAGAGGATCTGGCAGCAATGATATCCTGGATT
 ACAAGGATGACGACGATAAGGTTTAA

Protein Sequence: >RC221431 protein sequence
 Red=Cloning site Green=Tags(s)

MLPLLQLVPAKLLNSSCSLEKTLQCSCSFHGIPTPSVQWMMGGVPVVDGMDGSLQVTSTMLGPWANSTI
 SLTEEPENGMRLLCGKNQNGTHALSILLMSRKSSLAQAQFVKGLIQGAIYAGIVIALFLCLLPLIVKH
 IRKKQAKKAAAIIRAKKSSKVRASQELEMSLKPEEPGKPVVATFSESRILEKQDKRAS

TRTRPLEQKLISEEDLAANDILDYKDDDDKV



[View online »](#)

Chromatograms: https://cdn.origene.com/chromatograms/mk6466_f10.zip

Restriction Sites: SgfI-MluI

Cloning Scheme:



ACCN: NM_173635

ORF Size: 591 bp

OTI Disclaimer: The molecular sequence of this clone aligns with the gene accession number as a point of reference only. However, individual transcript sequences of the same gene can differ through naturally occurring variations (e.g. polymorphisms), each with its own valid existence. This clone is substantially in agreement with the reference, but a complete review of all prevailing variants is recommended prior to use. [More info](#)

OTI Annotation: This clone was engineered to express the complete ORF with an expression tag. Expression varies depending on the nature of the gene.

Components: The ORF clone is ion-exchange column purified and shipped in a 2D barcoded Matrix tube containing 10ug of transfection-ready, dried plasmid DNA (reconstitute with 100 ul of water).

Reconstitution Method:

1. Centrifuge at 5,000xg for 5min.
2. Carefully open the tube and add 100ul of sterile water to dissolve the DNA.
3. Close the tube and incubate for 10 minutes at room temperature.
4. Briefly vortex the tube and then do a quick spin (less than 5000xg) to concentrate the liquid at the bottom.
5. Store the suspended plasmid at -20°C. The DNA is stable for at least one year from date of shipping when stored at -20°C.

RefSeq: [NM_173635.2](#), [NP_775906.1](#)

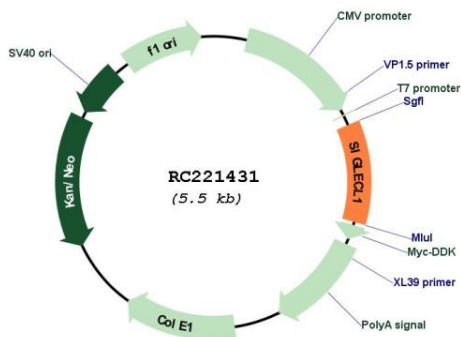
RefSeq Size: 1706 bp

RefSeq ORF: 594 bp

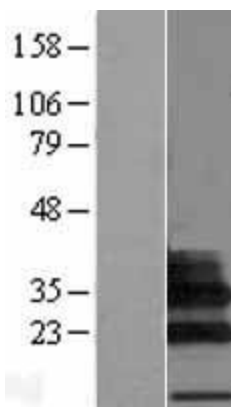
Locus ID: 284369

UniProt ID: [Q8N7X8](#)
 Cytogenetics: 19q13.41
 Protein Families: Transmembrane
 MW: 21.3 kDa

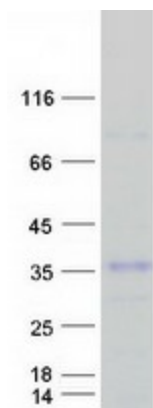
Product images:



Circular map for RC221431



Western blot validation of overexpression lysate (Cat# [LY406523]) using anti-DDK antibody (Cat# [TA50011-100]). Left: Cell lysates from untransfected HEK293T cells; Right: Cell lysates from HEK293T cells transfected with RC221431 using transfection reagent MegaTran 2.0 (Cat# [TT210002]).



Coomassie blue staining of purified SIGLECL1 protein (Cat# [TP321431]). The protein was produced from HEK293T cells transfected with SIGLECL1 cDNA clone (Cat# RC221431) using MegaTran 2.0 (Cat# [TT210002]).