

Product datasheet for **RC221419**

CCL27 (NM_006664) Human Tagged ORF Clone

Product data:

Product Type: Expression Plasmids
Product Name: CCL27 (NM_006664) Human Tagged ORF Clone
Tag: Myc-DDK
Symbol: CCL27
Synonyms: ALP; CTACK; CTAK; ESKINE; ILC; PESKY; SCYA27
Mammalian Cell Selection: Neomycin
Vector: pCMV6-Entry (PS100001)
E. coli Selection: Kanamycin (25 ug/mL)
ORF Nucleotide Sequence: >RC221419 representing NM_006664
Red=Cloning site Blue=ORF Green=Tags(s)

TTTTGTAATACGACTCACTATAGGGCGGCCGGAATTCGTCGACTGGATCCGGTACCGAGGAGATCTGCC
GCC**CGATCGCC**

ATGAAGGGGCCCAACCTTCTGCAGCCTCCTGCTGCTGTCATTGCTCCTGAGCCAGACCTACAGCAG
CATTCTACTGCCACCCAGCACTGCCTGCTGACTCAGCTCTACCGAAAGCCACTCTCAGACAAGCTACT
GAGGAAGGTCATCCAGGTGGAAGTGCAGGAGGCTGACGGGGACTGTCACCTCCAGGCTTCGTGCTTCC
CTGGCTCAACGCAGCATCTGCATCCACCCAGAAACCCAGCCTGTCACAGTGGTTGAGCACCAAGAGA
GAAAGCTCCATGGGACTCTGCCAAGCTGAATTTGGGATGCTAAGGAAAATGGGC

ACGCGTACGCGGCCGCTCGAGCAGAAACTCATCTCAGAAGAGGATCTGGCAGCAAATGATATCCTGGATT
ACAAGGATGACGACGATAAGGTTTAA

Protein Sequence: >RC221419 representing NM_006664
Red=Cloning site Green=Tags(s)
MKGPPTFCSLLLLSLLSPDPTAAFLLPPSTACCTQLYRKPLSDKLLRKVIQVELQEADGDCHLQAFVLH
LAQRSICIHQPNSLSQWFEHQERKLGTLPKLNFGMLRKM

TRTRPLEQKLISEEDLAANDILDYKDDDDKV

Chromatograms: https://cdn.origene.com/chromatograms/mk8042_d08.zip

Restriction Sites: SgfI-MluI



[View online »](#)

Cloning Scheme:


ACCN: NM_006664

ORF Size: 336 bp

OTI Disclaimer: The molecular sequence of this clone aligns with the gene accession number as a point of reference only. However, individual transcript sequences of the same gene can differ through naturally occurring variations (e.g. polymorphisms), each with its own valid existence. This clone is substantially in agreement with the reference, but a complete review of all prevailing variants is recommended prior to use. [More info](#)

OTI Annotation: This clone was engineered to express the complete ORF with an expression tag. Expression varies depending on the nature of the gene.

Components: The ORF clone is ion-exchange column purified and shipped in a 2D barcoded Matrix tube containing 10ug of transfection-ready, dried plasmid DNA (reconstitute with 100 ul of water).

- Reconstitution Method:**
1. Centrifuge at 5,000xg for 5min.
 2. Carefully open the tube and add 100ul of sterile water to dissolve the DNA.
 3. Close the tube and incubate for 10 minutes at room temperature.
 4. Briefly vortex the tube and then do a quick spin (less than 5000xg) to concentrate the liquid at the bottom.
 5. Store the suspended plasmid at -20°C. The DNA is stable for at least one year from date of shipping when stored at -20°C.

RefSeq: [NM_006664.4](#)

RefSeq Size: 469 bp

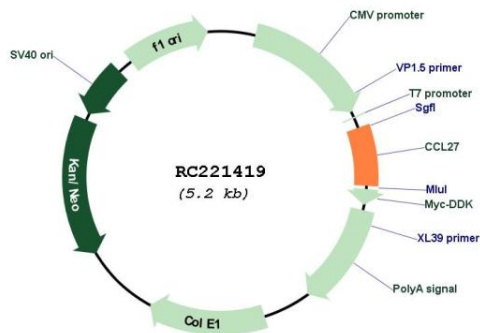
RefSeq ORF: 339 bp

Locus ID: 10850

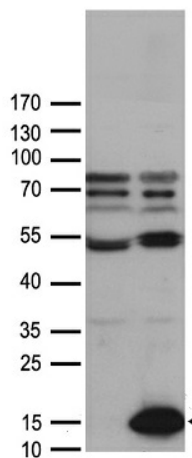
UniProt ID: [Q9Y4X3](#)
Cytogenetics: 9p13.3
Protein Families: Druggable Genome
Protein Pathways: Chemokine signaling pathway, Cytokine-cytokine receptor interaction
MW: 12.62 kDa

Gene Summary: This gene is one of several CC cytokine genes clustered on the p-arm of chromosome 9. Cytokines are a family of secreted proteins involved in immunoregulatory and inflammatory processes. The CC cytokines are proteins characterized by two adjacent cysteines. The protein encoded by this gene is chemotactic for skin-associated memory T lymphocytes. This cytokine may also play a role in mediating homing of lymphocytes to cutaneous sites. It specifically binds to chemokine receptor 10 (CCR10). Studies of a similar murine protein indicate that these protein-receptor interactions have a pivotal role in T cell-mediated skin inflammation. [provided by RefSeq, Sep 2014]

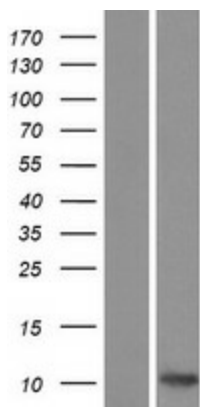
Product images:



Circular map for RC221419



HEK293T cells were transfected with the pCMV6-ENTRY control (Cat# [PS100001], Left lane) or pCMV6-ENTRY CCL27 (Cat# RC221419, Right lane) cDNA for 48 hrs and lysed. Equivalent amounts of cell lysates (5 ug per lane) were separated by SDS-PAGE and immunoblotted with anti-CCL27 antibody (Cat# [TA890017]). Positive lysates [LY416499] (100ug) and [LC416499] (20ug) can be purchased separately from OriGene.



Western blot validation of overexpression lysate (Cat# [LY416499]) using anti-DDK antibody (Cat# [TA50011-100]). Left: Cell lysates from untransfected HEK293T cells; Right: Cell lysates from HEK293T cells transfected with RC221419 using transfection reagent MegaTran 2.0 (Cat# [TT210002]).