

Product datasheet for **RC221406**

A1BG (NM_130786) Human Tagged ORF Clone

Product data:

Product Type:	Expression Plasmids
Product Name:	A1BG (NM_130786) Human Tagged ORF Clone
Tag:	Myc-DDK
Symbol:	A1BG
Synonyms:	A1B; ABG; GAB; HYST2477
Mammalian Cell Selection:	Neomycin
Vector:	pCMV6-Entry (PS100001)
E. coli Selection:	Kanamycin (25 ug/mL)



[View online »](#)

ORF Nucleotide Sequence:

>RC221406 representing NM_130786
 Red=Cloning site Blue=ORF Green=Tags(s)

TTTTGTAATACGACTCACTATAGGGCGGCCGGAATTCGTCGACTGGATCCGGTACCGAGGAGATCTGCC
 GCC**CGGATCGCC**

ATGTCCATGCTCGTGGTCTTTCTTTGCTGTGGGGTGTACCTGGGGCCAGTGACAGAAGCAGCCATAT
 TTTATGAGACGCAGCCAGCCTGTGGGCAGAGTCCGAATCACTGCTGAAACCTTGGCCAATGTGACGCT
 GACGTGCCAGGCCACCTGGAGACTCCAGACTTCCAGCTGTTCAAGAATGGGGTGGCCAGGAGCCTGTG
 CACCTTGACTCACCTGCCATCAAGCACCAGTTCCTGCTGACGGGTGACACCCAGGGCCGCTACCGTGCC
 GCTCGGGCTTGTCCACAGGATGGACCCAGCTGAGCAAGCTCCTGGAGCTGACAGGGCCAAAGTCCTTGCC
 TGCTCCCTGGCTCTCGATGGCGCCAGTGTCTGGATCACCCCGGCTGAAAACAACAGCAGTGTGCCGA
 GGTGTGCTGCGGGGTGTACTTTTCTGCTGAGGCGGGAGGGCGACCATGAGTTTCTGGAGGTGCCTGAGG
 CCCAGGAGGATGTGGAGGCCACCTTCCAGTCCATCAGCCTGGCAACTACAGCTGCAGCTACCGGACCGA
 TGGGAAGGCGCCCTCTCTGAGCCAGCGCTACTGTACCATTGAGGAGCTCGCTGCACCACCACCGCT
 GTGCTGATGCACCATGGAGATCCTCCAGTCCCTGCACCCTGGCAACAAGGTGACCCTCACCTGCGTGG
 CTCCCCTGAGTGGAGTGGACTTCCAGCTACGGCGCGGGGAGAAAGAGCTGCTGGTACCCAGGAGCAGCAC
 CAGCCCAGATCGCATCTTCTTTACCTGAACGCGGTGGCCCTGGGGGATGGAGGTCACTACACCTGCCGC
 TACCGGCTGCATGACAACCAAAACGGCTGGTCCGGGGACAGCGCGCCGGTTCGAGCTGATTCTGAGCGATG
 AGACGCTGCCCGCGCGGAGTTCTCCCCGAGCCGGAGTCCGGCAGGGCCTTGGCGTGCCTGCTGCG
 GCCCTGGAGGGCGCGCTTCCGCTGGTGGCGAGGACAGGGCGGGCGCCGCTGCACCGTTCCAG
 AGCCCCGCTGGGACCGAGCGCTTTCGAGCTGCACAACATTTCCGTGGTGACTCCGCCAACTACAGT
 GCGTCTACGTGGACCTGAAGCCGCTTTCCGGGGCTCCGCGCCAGCGAGCGCTTGGAGCTGCACGTGGA
 CCGACCCCTCCAGGCCTCAGCTCCGGGCGACGTGGAGTGGGGCGGTCTGGCGGGCCGAGATGCCGTC
 CTGCGCTGCGAGGGACCCATCCCCGACGTACCTTCGAGCTGCTGCGGAGGGCGAGACGAAGGCCGTGA
 AGACGGTCCGACCCCGGGGCGCGGCAACCTCGAGCTGATCTTCGTGGGGCCCGAGCAGCGCGGCA
 CTACAGGTGCCGCTACCGCTCCTGGGTGCCCCACACCTTCGAATCGGAGCTCAGCGACCCTGTGGAGCTC
 CTGGTGGCAGAAAGC

ACGCGTACGCGGCGCTCGAGCAGAAACTCATCTCAGAAGAGGATCTGGCAGCAAATGATATCCTGGATT
 ACAAGGATGACGACGATAAGGTTTAA

Protein Sequence:

>RC221406 representing NM_130786
 Red=Cloning site Green=Tags(s)

MSMLVVFLLWVGTWGPVTEAAIFYETQPSLWAESESLKPLANVTLTCQAHLETPDFQLFKNGVAQEPV
 HLDSPAIKHQFLLTGDTQGRYRCSGLSTGWTQLSKLLELTGPKSLPAPWLSMAPVSWITPGLKTTAVCR
 GVLRGVTFLLRREGDHEFLEVEAQEDVEATFPVHQPGNYSYRTDGEALSEPSATVTIEELAAPPPP
 VLMHGESSQVLHPGNKVTLCVAPLSGVDFQLRRGEKELLVPRSSTSPDRIFFFHLNAVALGDGGHYTCR
 YRLHDNQNWSGDSAPVELILSDETLPAPEFSPEPESGRALRLRCLAPLEGARFALVREDRGRVHRFQ
 SPAGTEALFELHNI SVADSANYSCVYVDLKPPFGGSAPSERLELHVDGPPPPRQLRATWSGAVLAGRDAV
 LRCEGPIPDVTFELLREGETKAVKTVRTPGAAANLELIFVGPQHAGNYRCRYRSWVPHTFESELSDPVEL
 LVAES

TRTRPLEQKLISEEDLAANDILDYKDDDDKV

Chromatograms:

https://cdn.origene.com/chromatograms/mk8012_a10.zip

Restriction Sites:

Sgfl-Mlul

Cloning Scheme:


ACCN: NM_130786

ORF Size: 1485 bp

OTI Disclaimer: The molecular sequence of this clone aligns with the gene accession number as a point of reference only. However, individual transcript sequences of the same gene can differ through naturally occurring variations (e.g. polymorphisms), each with its own valid existence. This clone is substantially in agreement with the reference, but a complete review of all prevailing variants is recommended prior to use. [More info](#)

OTI Annotation: This clone was engineered to express the complete ORF with an expression tag. Expression varies depending on the nature of the gene.

Components: The ORF clone is ion-exchange column purified and shipped in a 2D barcoded Matrix tube containing 10ug of transfection-ready, dried plasmid DNA (reconstitute with 100 ul of water).

Reconstitution Method:

1. Centrifuge at 5,000xg for 5min.
2. Carefully open the tube and add 100ul of sterile water to dissolve the DNA.
3. Close the tube and incubate for 10 minutes at room temperature.
4. Briefly vortex the tube and then do a quick spin (less than 5000xg) to concentrate the liquid at the bottom.
5. Store the suspended plasmid at -20°C. The DNA is stable for at least one year from date of shipping when stored at -20°C.

RefSeq: [NM_130786.4](#)

RefSeq Size: 3386 bp

RefSeq ORF: 1488 bp

Locus ID: 1

UniProt ID: [P04217](#)

Cytogenetics: 19q13.43

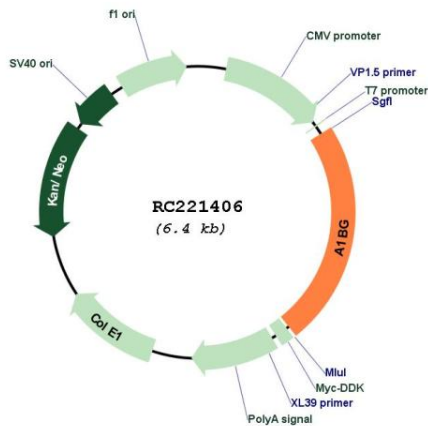
Domains: ig, IGc2, IG

Protein Families: Druggable Genome, ES Cell Differentiation/IPS, Secreted Protein

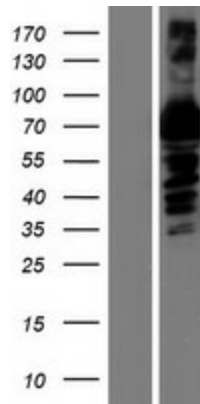
MW: 51.9 kDa

Gene Summary: The protein encoded by this gene is a plasma glycoprotein of unknown function. The protein shows sequence similarity to the variable regions of some immunoglobulin supergene family member proteins. [provided by RefSeq, Jul 2008]

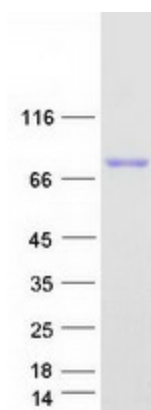
Product images:



Circular map for RC221406



Western blot validation of overexpression lysate (Cat# [LY408945]) using anti-DDK antibody (Cat# [TA50011-100]). Left: Cell lysates from untransfected HEK293T cells; Right: Cell lysates from HEK293T cells transfected with RC221406 using transfection reagent MegaTran 2.0 (Cat# [TT210002]).



Coomassie blue staining of purified A1BG protein (Cat# [TP321406]). The protein was produced from HEK293T cells transfected with A1BG cDNA clone (Cat# RC221406) using MegaTran 2.0 (Cat# [TT210002]).