

Product datasheet for RC221405

ZNF827 (NM_178835) Human Tagged ORF Clone

Product data:

Product Type:	Expression Plasmids
Product Name:	ZNF827 (NM_178835) Human Tagged ORF Clone
Tag:	Myc-DDK
Symbol:	ZNF827
Mammalian Cell Selection:	Neomycin
Vector:	pCMV6-Entry (PS100001)
E. coli Selection:	Kanamycin (25 ug/mL)
ORF Nucleotide Sequence:	>RC221405 representing NM_178835 Red=Cloning site Blue=ORF Green=Tags(s)

TTTTGTAATACGACTCACTATAGGGCGGCCGGGAATTCGTCGACTGGATCCGGTACCGAGGAGATCTGCC
GCCCGATCGCC

ATGCCAGGAGGAAGCAGGAGCAGCCAAAGCGCCTTCCCTCACATGTTAGTAGGCAGGAAGAGGCGGAGG
GAGAGCTCAGTGAAGGAGAACACTGGTATGGAACTCTTCAGAGACTCCGTCAGAAGCATCTATGGGGA
AGTCCAGGAGAACTATAAGTTGTCTCTGGAGGACCGGATCCAGGAGCAGTCCACGTCCCCGGACACCTCC
TTGGGAAGCAGACTCCCAGCAGCCACACGTTGGAGCTGGTGGCACTGGACAGTGAAGTCCCTGCCAGACT
CACTGCAGTGTCAAGATCACCTTCCCCGGGAGTGTCTTCTTTGTGTGACGATGACCCAGGCTCCAAACA
GCCCTGAGCAGCAATTTGAGGCGGCTGCTGGAGGCTGGTTCCCTCAAACCTCGATGCTGCAGCCACGGCT
AATGGCAGAGTGGAGTCCCCCGTAAACGTTGGCTCGAACCTCTCCTTTTCCCCGCTTCCACCACGCCCC
AGCAGCTCAGTGTCTGGCCAGGAAGTTGGCCGAGAAGCAGGAACAGAATGACCAATACACTCCAAGTAA
CCGTTTTATATGGAATCAAGGTAAGTGGTTGCCAACTCAACCACCCTGCAGCTTGTCTCCGGATTCA
GCCATCTAAAAGCTGAAAGCTGCAGCAATGCCGTTCTGCAGGACAAATCTCTACCAGGACTGAGGAGA
CCATGCGATTTGAGTCTTTTCTCCCTTTTAGCTCCAGTCTGCCAGTCTACCTTGGCCGCTTTGTC
CAAGAAGGTCAAGTAAAGTTTACTCCTGGTCAAGGAGCACCCTCCACCGCCAGCTCCTTCTTTCC
CTGGCTTCTATGACCTCCTCAGCGGCCCTTCTGAAGGAGTGGCCGAAGGGCTGCGGGCAGTCTTCTGG
CTGAGAAATCATCGCTGCTGCCTGAGGACCTCTACCGCCCCGCTTTCAGAGAAGAAACAGAAAAGT
CACTCCGCCACCTCCACCGCCACCTCCACCACCTCCACCACCACCACAATCCCTGGAATTTATTA
CTCCCAGTTCTAAGGGAAGAGTTTCTAAACCCTCCAATTCAGCCTCAGAAGAGGAAAGTGGAAAGCCTT
TCCAGTGTCCAATATGTGGTTTGGTTATTTAAAGGAAGAGTTACTGGAAGCGGCACATGGTGATTACAC
AGGTTTAAAAGTCATCAGTGTCCGCTCTGTCCATTCCGGTGTGCTCGCAAGGACAATCTCAAATCCCAC
ATGAAGTTTCATCAGCACCAGGATCGGGGAGAGACCTTTCAGTGCCAGCTGTGCCCTTTTACTTCTCAC
GCCACTTCAGCCTGAAACTCCACATGCGTTGCCATCAGCACTTCTGAGGACAGAAGCAAGGTGAAGGA
GGAGATCCAGACCCAGATGTCAAGGGATCTCCCACCTCAGTGACAGTGCCTGCCTGGGGCAGCAAGG
GAAGGAGGGGACAGAGCTAGTGGGACCATGATGACGTCTAACACTCCAGAGAGGACTAGCCAGGGAG
GGGCTGGCGTCTCGCCTTTGCTGGTGAAGGAGAACCAAGGAAGATAACGGCCTGCCACCTCCTTTAC



[View online »](#)

TTTGAATGCTGCCGACAGGCCCGCCAACACACAAAGCTGAAAGACCCTCCGAGTATGTGGCCAACAGT
 GCGTCAGCATTGTTTCAGCCAGGACATCTCTGTTAAGATGGCGTCTGATTTTCTCATGAAGCTGTCAGCTG
 CAAATCAGAAGGAGCCCATGAATCTTAATTTTAAAGTAAAGAGGAGCCTAAGGAAGGGGAGTCCCTAAG
 CACGACTTTGCCCTCGGTCCAGCTATGTGTTTCAGCCCGAATCTGAAGTGTAGCCAGGCGTCTCTGAG
 GACGCACTAAAGCCCCAGGAAGGGAAGGGAAGTGTGCTAAGGCGGGATGTGTCAGTCAAAGCAGCCTCTG
 AACTTCTCATGAACTCTCAGCGGAAAGCTACAAGGAAACACAGATGGTGAAGATTAAGAGGAACCCAT
 GGAGGTTGACATCCAGGACTCCCATGTCTCGATATCACCAGCCGGAATGTTGGCTACAGCACTTTAATC
 GGGCGAGAGAAAACCGAACCCCTTACAGAAGATGCCAGAGGGCAGAGTACCCAGAGAGAAAACCTTCA
 GTCAGGATATCTCTGTGAAAATGGCTTCCGAGCTCCTCTTTCAACTGTCAGAAAAAGTGAGCAAAGAGCA
 CAATCATACAAAAGAAAACACCATCCGGACCACGACCAGCCCTTTCTTTTCAGAAGACACATTTAGACAA
 TCACCATTACCTCCAATTCAAAAGAACTGCTGCCAGTACTCCGTGCTGCACGGAAGAATATCAGCTC
 CAGAAACAGAAAAGATAGTCTAGAGGCAGGAAATGGATTACCATCCTGGAAATTAATGACCAGCTTTT
 TCCCTGTGACGTGTGGGAAAGTGTGGCCGACAGCAGACATTGTCCGACACCTCTCGCTGCACACA
 GAGGAAAGAAAATACAAATGCCACTTGTGCCCTATGCTGCTAAGTCCCGTGCAAACTGAACCAGCACT
 TGACCGTCCATCCGTGAAGCTGGTGAAGTACAGACACCGAGGACATTGTCAGCGCCGTCACTCTGAAGG
 CAGTGATGGGAAGAAACATCCTTATTATTACAGTTGTCACGTGTGGATTGAGACCGAGCTCAATGTC
 CAGTTTGTGAGCCACATGTCACCTCCACGTGGACAAGGAGCAGTGGATGTTTTCGATCTGCTGCACCTGCCT
 GCGACTTCGTACCATGGAGGAAGCAGAGATAAAGACTCACATTGGCACCAGCACAGGGGAAGACAG
 GAAGACCCCGAGCGAATCAAATAGCCCTCTTTCATCCTCCCTCTCAGCTCTGAGTGATTACAGCAACAGC
 AAAGATGATTGAGTGGCTCCAGAAAACAAGGGCGGGAACAATCTGCTGGTCACTCTGTCATGCCTG
 GGAGCCAGCCCTCACTGAACAGTGAAGAAAAGCCAGAGAAAGGGTTCGAATGTGTTTTTGAACCTTTGT
 CTGAAGACGAAGAACATGTTTGAAGCGTCACTGTCAGATACACCTCATCACCAGGATGTTGAGTGTGAT
 GTGTGCCACAAGTTCATGAAGACCCCGAACAGCTGCTGGAGCATAAGAAATGCCACACTGTCCCAACCG
 GTGGGCTCAAG

ACGCGTACGCGGCCGCTCGAGCAGAAACTCATCTCAGAAGAGGATCTGGCAGCAATGATATCCTGGATT
 ACAAGGATGACGACGATAAGGTTTAA

Protein Sequence:

>RC221405 representing NM_178835

Red=Cloning site Green=Tags(s)

MPRRKQEQPKRLPSHVSQRQEEAEGELSEGEHWYGNSETPSEASYGEVQENYKLSLEDRIQEQTSPDTS
 LGSTTPSSHTLELVALDSEVLRDSLQCQDHLSPGVSSLDDDPGSNKPLSSNLRRLLLEAGSLKLDAAATA
 NGRVESPVNVGSNLSPSPSHHAQQLSVLARKLAEKQEQNQYTPSNRFIWNQGWLPNSTTTCSLSPDS
 AILKLLKAAANAVLQDKSLTRTEETMRFESFSSPFSSQSASSTLAALSKKVSERSLTPGQEHPPPASSFLS
 LASMTSSAALLKEVAARAAGSLLAEKSSLLPEDPLPPPSEKKPEKVTPPPPPPPPPPPPPPPPPPPPQSLLELL
 LPVPKGRVSKPSNSASEEESGKPFQCPICGLVIKRSYWKRMVIMHTGLKSHQCPLPFRCARKDNLKSH
 MKVHQHQRGETFQCQLCPFTSSRHFSLKLMRCHQHFLRTEAKVKEEIPDPDVKGSPHLSDSACLQQR
 EGGTELVTMMTSTNTPERTSQGGAGVSPLLVKEEPKEDNGLPTSFTLNAADRPANHTKLDKDPSEYVANS
 ASALFSQDISVKMASDFLMKLSAANQKPMNLFKVKKEEPKEGESLSTTLPRSSYVFSPESEVSAPGVSE
 DALKPQEGKGSVLRDVSVKAASELLMKLSAESYKETQMVKIKEEPMEDIQDHSVSISSRNQVGYSTLI
 GREKTEPLQKMPGEGRVPPERLFSQDISVKMASELLFQLSEKVSKEHNHTKENTIRTTTSPFFSEDFRQ
 SPFTSNSKELLPSDSVLHGRISAPETEKIVLEAGNGLPSWKFNQDLFPCDVCGKVFGRQQLSRHLSLHT
 EERKYKCHLCPYAAKCRANLNQHLTVHSVKLVSTDTEDIVSAVTSESDGKHKHPYYSCHVCGFETELNV
 QFVSHMSLHVDKEQWMSICCTACDFVTMEEAEIKTHIGTKHTGEDRKTPESESNPSSSSLSALSDSANS
 KDDSDGSQKNKGGNNLLVISVMPGSQPSLNSEEKPEKGFECVFCNFVCKTKNMFERHLQIHLITRMFECD
 VCHKFMKTPEQLLEHKKCHTVP TGGLK

TRTRPLEQKLISEEDLAANDILDYKDDDDKV

Chromatograms:

https://cdn.origene.com/chromatograms/mk8042_d10.zip

Restriction Sites:

Sgfl-Mlul

Cloning Scheme:


ACCN: NM_178835

ORF Size: 3231 bp

OTI Disclaimer: Due to the inherent nature of this plasmid, standard methods to replicate additional amounts of DNA in E. coli are highly likely to result in mutations and/or rearrangements. Therefore, OriGene does not guarantee the capability to replicate this plasmid DNA. Additional amounts of DNA can be purchased from OriGene with batch-specific, full-sequence verification at a reduced cost. Please contact our customer care team at custsupport@origene.com or by calling 301.340.3188 option 3 for pricing and delivery.

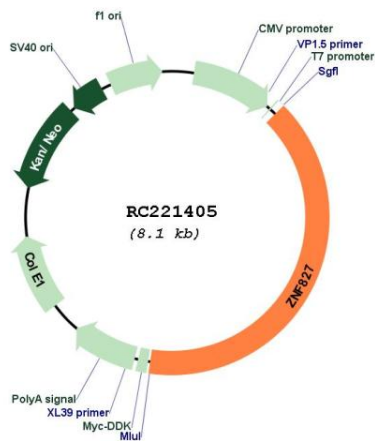
The molecular sequence of this clone aligns with the gene accession number as a point of reference only. However, individual transcript sequences of the same gene can differ through naturally occurring variations (e.g. polymorphisms), each with its own valid existence. This clone is substantially in agreement with the reference, but a complete review of all prevailing variants is recommended prior to use. [More info](#)

OTI Annotation: This clone was engineered to express the complete ORF with an expression tag. Expression varies depending on the nature of the gene.

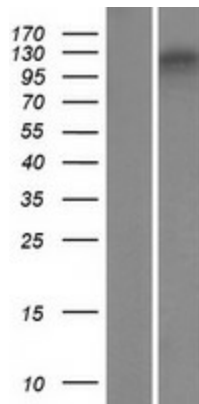
Components: The ORF clone is ion-exchange column purified and shipped in a 2D barcoded Matrix tube containing 10ug of transfection-ready, dried plasmid DNA (reconstitute with 100 ul of water).

- Reconstitution Method:**
1. Centrifuge at 5,000xg for 5min.
 2. Carefully open the tube and add 100ul of sterile water to dissolve the DNA.
 3. Close the tube and incubate for 10 minutes at room temperature.
 4. Briefly vortex the tube and then do a quick spin (less than 5000xg) to concentrate the liquid at the bottom.
 5. Store the suspended plasmid at -20°C. The DNA is stable for at least one year from date of shipping when stored at -20°C.

RefSeq: [NM_178835.5](#)
RefSeq Size: 7814 bp
RefSeq ORF: 3234 bp
Locus ID: 152485
UniProt ID: [Q17R98](#)
Cytogenetics: 4q31.21-q31.22
Protein Families: Transcription Factors
MW: 118.7 kDa
Gene Summary: May be involved in transcriptional regulation.[UniProtKB/Swiss-Prot Function]

Product images:


Circular map for RC221405



Western blot validation of overexpression lysate (Cat# [LY405852]) using anti-DDK antibody (Cat# [TA50011-100]). Left: Cell lysates from untransfected HEK293T cells; Right: Cell lysates from HEK293T cells transfected with RC221405 using transfection reagent MegaTran 2.0 (Cat# [TT210002]).