

Product datasheet for RC221400

C9orf93 (CCDC171) (NM_173550) Human Tagged ORF Clone

Product data:

Product Type:	Expression Plasmids
Product Name:	C9orf93 (CCDC171) (NM_173550) Human Tagged ORF Clone
Tag:	Myc-DDK
Symbol:	CCDC171
Synonyms:	bA536D16.1; bA778P13.1; C9orf93
Vector:	pCMV6-Entry (PS100001)
E. coli Selection:	Kanamycin (25 ug/mL)
Cell Selection:	Neomycin
ORF Nucleotide Sequence:	>RC221400 representing NM_173550 Red=Cloning site Blue=ORF Green=Tags(s)

TTTTGTAATACGACTCACTATAGGGCGCCGGAATTCGTCGACTGGATCCGGTACCGAGGAGATCTGCC
GCC**CGATCGCC**

ATGAATTTGAATACTTCAAGTAATACTGGTGATACCCAAAGTTGAAGATTGCCTCATTGGATGTAAAC
AAATACTTAAAAATGAAACAGAGTTGGATATTACTGATAATCTCAGGAAGAACTCCATTGGGCTAAAA
AGAAAAGTTAGAAATAACAACCAACACAATGCAGAGCTGGCAAGCTATGAGAGCCAGATTGCCAAGCTA
CGGTCCGAGGTTGAAAAGGGAGAAGCATTGCGACAAAGTCTGGAATATGCCTAGCTGTTGCTAGAAAGG
AAGCTGGTCTTGAAGACGGGCTGCTGAAGAAAGATTAGCCGAGGCACATAGGATCCAAGAAAACTCTG
TGCACAGAATTCAGAACTTCAAGCAAAGACAAATGAGACTGAGAAAGCATTTCAGACTTCTCAGCAAAAA
TGGAAAGAAGAAATGCAGAAGATTTGAACATGATTTGGAGGAAAGAGACAATATGATCCAAAATTGCAATC
GAGAATATGATTTACTTATGAAAGAAAAAGCAGACTAGAGAAACTCTACAGGAAGCGTTGAAAAACA
TCAACGGGAGAAGAATGAGATGGAGTCTCATATCAGGGAGACAGCATTGGAGGAGTTTAGATTACAAGAA
GAACAATGGGAAGCAGAAAAGAAGAGAATTACAATTTATAGTACAGGAGCAAGATACTGCTGTGCAAAATA
TGCATAAGAAAAGTAGAAAATTAGAAAACAGAACATATGGACTGCTGACCTTTTACGGCAGCAACAAG
TGAACCTTGAATTTAGCACTCAACGAGAGGAACGCCTTAGAAAAGAATTTGAGGCAACTACTCTAAGAGTG
AGGAAATTAGAAGAAAACATTGAAGCAGAAAGAGCAGCGCATTTGGAATCAAAATTTAATCTGAAATTA
TTCAGTTACGGATTTCGAGACCTTGAAGGAGCTTTGCAAGTAGAGAAGGCCAGTCAAGCAGAAGCTGTTGC
TGATTTGGAAATTAACAAGAAATGAATTCAAAGAAGTTGAAAGTGCAATGAGCGAGAAAAGCATAATGCA
CAAGAGAGCTTTGCAAACTAAATTTATTAGAAAAAGAGTATTTCTCAAAAATAAGAACTAAATGAAG
ACATCGAGGAACAGAAGAAAGTAATTATAGACCTTCAAAGAGACTCCAGTATAATGAAAAAGTTGCAG
TGAATTACAGGAAGAACTAGTAATGGCTAAGAAGCACCAGGCCTTCTAGTAGAGACATGTGAAAAAATAC
GTGAAAGAATTGGAATCGATCTTGGACAGCTTTACTGTGTGGGCCAGTGGACATCAGGCATCCACAAGG
ACAAAGATAAACCTCCCAGCTTCTCTGTTGTCCTTGAGAGATTGAGGCGTACCTTGACAGATTACCAGAA
CAAGCTGGAAGATGCATCTAATGAGGAAAAGGCATGTAATGAACTTGATTCTACGAAACAGAAGATAGAC
TCTCACACTAAAAATATAAAGGAACTTCAGGATAAACTGGCTGATGTTAATAAAGAGTTAAGTCATTTAC



[View online »](#)

ACACTAAATGTGCAGACCGAGAGGCTTTAATAAGCACTTTAAAAGTGGAACACAAAATGTGCTGCACTG
TTGGGAGAAAAGAAAGGCTCAGGCAGCCAGTCTGAAAGTGAACAGCAGAAAGCTTTCCAGGCTTTCCAT
AAGGATGCAGAGGAGAAGCTAACCTTCCTTACACCTTATATCAGCACTTGGTAGCAGGCTGTGTGCTCA
TAAAACAACCAGAAGGCATGCTGGATAAATCTCTTGGTCTGAGCTTTGTGCAGTCTTACAGGAGAATGT
TGATGCCCTGATTGCAGACCTCAACAGGGCTAATGAGAAGATAAGGCATCTAGAGTATATCTGTAAAAAC
AAGTCTGACACGATGAGAGAGCTTCAGCAGACTCAGGAAGACACCTTTACCAAAGTGGCAGAACAGATCA
AAGCCCAAGAGAGCTGCTGGCACAGACAAAAGAAGGAACAGAGCTGCAGTATTCTGAACCTTCCCTGGA
GGTGCAGAAAGAGGGCACAGAAATTTCAAGAAATTGCTGAAAAAACATGGAAAAATTGAACCATATTGAG
AAGTCACATGAACAGTTGGTTCTTGAAAATTCGCACTTCAAAAACTGTTATCACAGACTCAAAGGGAAC
AGATGTCCTTGCTGGCAGCCTGTGCATTAATGGCTGGTGCCTTATATCCCTCTATAGCCGATCATGCGC
CTTGTCTACACAGAGAGATTTTCTCCAGGAGCAGGTCAACACCTTTGAGTTGTTCAAAGTGGAAATTAGA
ACTCTAGCCAGGCTTTGTCAACTGTAGAGGAAAAGAAGCAAGAGGAAGCCAAGATGAAAAAGAAAACAT
TCAAAGGATTGATACGTATATTCGAAAGGTGTTATTGCTGTTTTGGCAGCAAACAGACTCAAGATTTT
GGGCCAATCATGTGCTCTCTTTTTACCTGGATGGAGAGTTTCAAAGAAGGCATAGGCATGTTAGTGTGC
ACAGGAGAGCCCCAAGACAAGCATAAATTTCCAAAACATCAAAGGAGCAGTTGCGTTGTTACAAGCGC
TCAGTTGGCTCACCAGTTCTGACCTTCTGCTGCAATAATCAGTTCTATGGCTGAATTACAAGACGTCAT
TGGTAAAGCAGATCCAAATTCAGAATTTGTGGACATTTACTCATAGGTGCAGCCAAAGATTTCTTTTGCA
AAACTCATGGATAAAATAGTCTGGTAATGGAATGTATACCTCTGCACAGTAGCAGGAGTATTACATATG
TAGAAAAAGATTCCTGGTTTCAGAGGCTGGCCATGGACTTCATAAAGTAAACACACTGGCCCTGAAATA
TGGTTTTCGCTGGCCATGTGCCATTACGAAAAGCACAGCATCGTTGCAGAAGCAAATACTTGGATTTACA
CAAAGACTGCATGCTGCAGAAGTGGAGCGCCGCTCACTACGCTTAGAGGTACAGAATTCAAACGAAGTG
TGAATGAAATGAAAAGGAGCTTGACAAAAGCCAGGGTCTGCAATGCAATTAATGAATTTAAGCAGTC
TAAATTGATCACCATGAGAAGTTTGAAGTGCAATGTGAAGAACTAAATAATGCATTACTTCGGGAAGAG
CAGGCACAAATGCTATTGAATGAACAGGCACAACAACACTACAGGAATTGAATTATAAACTGAATTGCACT
CCAGTGAGGAAGCTGACAAAACCAAACCTTGGAGAAGCTGTTAAGAGTCTCTCCGAGGCAAAGATGGA
GCTGAGAAGAAAAGATCAATCTCTGCGTCAGCTCAATAGACATCTTACCCAGCTGGAGCAGGACAAGCGT
CGACTGGAGGAGAACATCCATGATGCAGAGAGTGCCTCCGCAATGGCAGCCAAAGACAAAGAAATGTGTTG
CTAATCACATGAGAGCAGTAGAAAATACGCTTCACAAGGTGAGAGATCAGATCTCGCTGTCATGGTCTGC
GGCAAGTAGGAATGACTTACCCTACAGCTACCCAACTGCACCTGGAGACCTTTGCAATGGAGGGGCTC
AAGGGCGGGCCAGAGGTGTAGCATGCCAGGCTATGATTAAGTTCATGGATGTCTACCAGCTTGCAA
GCACTAGAATCATGACATTAGAGAAGGAAATGACATCTCATCGAAGTACATTGCAGCCTTGAAATCAGA
ACTTCACACAGCTTGTTACGTGAAAATGCAAGTTTACAATCAATAGGATCACGAGACCATTCAAATCTC
TCCATTCTTCAAGAGCTCCTCTTCTGCTGACACAACCTGGTATTGGGGATTTCTTACCATTGAAAGCTG
AACTTGATACTACTTACACTTTCTTAAAGGAGACATTTATAAATACTGTGCCCATGCTCTGACATCATC
TCACTCTCTCCAGTGACTATGTCTGCTAATGCCAACAGACCAACTCAGATTGGATTA

ACGCGTACGCGGGCCGCTCGAGCAGAACTCATCTCAGAAGAGGATCTGGCAGCAAATGATATCCTGGATT
ACAAGGATGACGACGATAAGGTTTAA

Protein Sequence: >RC221400 representing NM_173550
 Red=Cloning site Green=Tags(s)

MNLNTSSNTGDTQRLKIASLDVKQILKNETELDITDNLRKKLHWAKKEKLEITTKHNAELASYESQIAKL
 RSEVEKGEALRQSLEYDLAVARKEAGLRRAAEERLAEAHRIQEKLCAQNSELQAKTNETEKAFQTSQQK
 WKEECRRFEHDL EERDNMIQNCNREYDLLMKEKSRL EKTLEALEKHQREKNEMESHIRETAL EEFRLQE
 EQWEAERRELQFIVQEQDTAVQNMHKKVEKLETEHMDCSDLLRRQTSELEFSTQREERLRKEFEATTLRV
 RKLEENIEAERAHLESKFNSEIIQLRIRDLEGALQVEKASQAEAVADLEIIKNEFKEVESAYEREKHNA
 QESFAKLNLL EKEYFSKNKKNL NEDIEEQKVIIDL SKRLQYNEKSCSELQEELVMAKKHQAFLVETCENN
 VKELESILDSFTVSGQWTSGIHKDKDKPPSF SVVLERLRRTL TDYQNKLE DASNEEKACNELDSTKQKID
 SHTKNIKELQDKLADVNKELSHLHTKCADREALISTLKVELQNVLHCWEKEKAQAAQSESELQKLSQAFH
 KDAEEKL TFLHTLYQHL VAGCVL IKQPEGMLDKFSWSELCAVLQENV DALIADLNRANEKIRHLEYICKN
 KSDTMRELQQTQEDFTTKVAEQIKAQESCWHRQKKELELQYSEL FLEVQKRAQKFQEI A EKNMEKLNHIE
 KSHEQLVLENSHFKLLSQTQREQMSLLAACALMAGALYPLYSRSCALSTQRDFLQEQVNTFELFKLEIR
 TLAQALSTVEEKKQEEAKMKKTKFKGLIRIFRKGVI AVLAAANRLKILGQSCASLFTWMESFKEGIGMLVC
 TGEPQDKHKFKPKHQEQLRCLQALSWL TSSDLLAAISSMAELQDVIGKADPN S R ICGHLLI GA AKNSFA
 KLMDKISLVMECIPLHSSRSITYVEKDSL VQRLAHGLHKVNTLALKYGLRGHVPITKSTASLQKQILGFT
 QRLHAAEVERSLRLEVTEFKRSVNEMKKELDKAQGLQMQLN EFKQSKLITHEKFESACEELN NALLREE
 QAQMLLNEQAQQLQELNYKLELHSE EADKNQTLGEAVKSLSEAKMELRRKDQSLRQLNRHLTQLEQDKR
 RLEENIHDAESALRMAAKDKECVANHMRAVENTLHKVRDQISLSWSAASRNDFTLQLPKLHLETFAMEGL
 KGGPEVVACQAMIKSFMVYQLASTRIMTLEKEMTSHRSHIAALKSELHTACLRENASLQSIGSRDHSNL
 SIPSRAPLPADTTGIGDFLPLKAELDTTYTFLKETFIN TVPHAL TSSHSPVTMSANANRPTQIGL

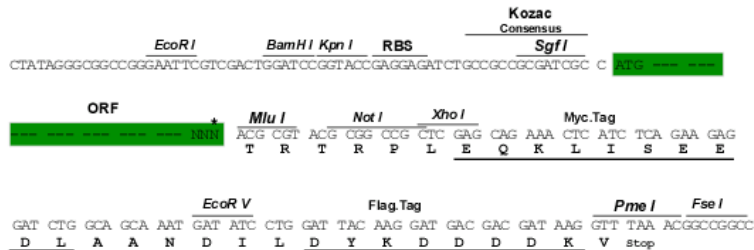
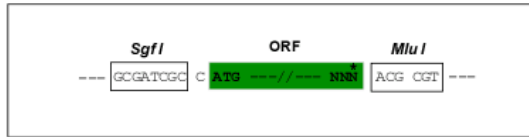
TRTRPLEQKLISEEDLAANDILDYKDDDDKV

Restriction Sites:

Cloning Scheme:

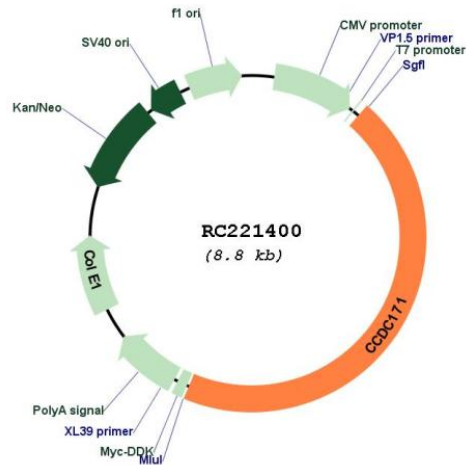
Sgfl-MluI

Cloning sites used for ORF Shuttling:



* The last codon before the Stop codon of the ORF

Plasmid Map:



ACCN: NM_173550

ORF Size: 3978 bp

OTI Disclaimer: The molecular sequence of this clone aligns with the gene accession number as a point of reference only. However, individual transcript sequences of the same gene can differ through naturally occurring variations (e.g. polymorphisms), each with its own valid existence. This clone is substantially in agreement with the reference, but a complete review of all prevailing variants is recommended prior to use. [More info](#)

OTI Annotation: This clone was engineered to express the complete ORF with an expression tag. Expression varies depending on the nature of the gene.

Components: The ORF clone is ion-exchange column purified and shipped in a 2D barcoded Matrix tube containing 10ug of transfection-ready, dried plasmid DNA (reconstitute with 100 ul of water).

Reconstitution Method:

1. Centrifuge at 5,000xg for 5min.
2. Carefully open the tube and add 100ul of sterile water to dissolve the DNA.
3. Close the tube and incubate for 10 minutes at room temperature.
4. Briefly vortex the tube and then do a quick spin (less than 5000xg) to concentrate the liquid at the bottom.
5. Store the suspended plasmid at -20°C. The DNA is stable for at least one year from date of shipping when stored at -20°C.

RefSeq: [NM_173550.4](#)

RefSeq Size: 4359 bp

RefSeq ORF: 3981 bp

Locus ID: 203238

UniProt ID: [Q6TFL3](#)

Cytogenetics: 9p22.3

MW: 152.6 kDa