

Product datasheet for **RC221392**

EYS (NM_198283) Human Tagged ORF Clone

Product data:

Product Type:	Expression Plasmids
Product Name:	EYS (NM_198283) Human Tagged ORF Clone
Tag:	Myc-DDK
Symbol:	EYS
Synonyms:	bA74E24.1; bA166P24.2; bA307F22.3; C6orf178; C6orf179; C6orf180; dj22117.2; dj303F19.1; dj1018A4.2; EGFL10; EGFL11; RP25; SPAM
Mammalian Cell Selection:	Neomycin
Vector:	pCMV6-Entry (PS100001)
E. coli Selection:	Kanamycin (25 ug/mL)



[View online »](#)

ORF Nucleotide Sequence:

>RC221392 ORF sequence
 Red=Cloning site Blue=ORF Green=Tags(s)

TTTTGTAATACGACTCACTATAGGGCGGCCGGGAATTCGTCGACTGGATCCGGTACCGAGGAGATCTGCC
 GCC**GCGATCGCC**

ATGACTGACAAATCAATCGTCATTCTGAGCCTGATGGTTTTTACAGCTTTTCATAAATGGAAAAACAT
 GTAGACGGCAATTGGTGAAGAATGGCATCCACAACCCTCATCATATGTGGTAAATTGGACTAACAGA
 AAACATCTGCTTGGACTTCTACAGAGATTGCTGGTTTTTGGGTGTAACACTAAAATAGATACTTACGGC
 AATCAAGCTGTTCCCGAGATTTGCCCTTTCGCAAAATCAATTAGGAGATATCCTTGTAAATTTCTTCTGAAC
 CATCTCTTCAATTTCCAGAAATAAATTTGATGAATGTTTCTGAAACATCTTTCGTTGGCTGTGTGCAAAA
 TACCACAAATGGAAGATCAGTTACTTTTTGGCTGCAGACTAAAAGGAATGCACACTGTTAATTTCTAAGTGG
 CTGAGTGTGGGACACATTATTTTATCACAGTTATGGCAAGTGGTCCATCACCTTGCCACTGGGACTTC
 GACTAAATGTGACAGTGAACAGCAGTTCTGCCAGGAATCTGAGTTCAGAATTTTCTGCTGGTATGG
 TAAATGTCTTAGTGAAGCTTGGAGCAAGACATATAGCTGCCATTGCCAGCCTCCATTTTCTGAAAAATAC
 TGCCAGGAACTTGATGCATGTTCTTTAAACCATGTAATAAATGTCAGTTGCATTAATAAAGAGAAA
 ATTTGGGATGAGCAAGCATATGAATGTGTCTGTCACCCACCATTTACAGGAAAGAATTGCTCAGAAAATAT
 TGGCCAGTGTCAACCACATGTCTGTTCCATGGAACTGCAGCAATTAATCTTCAATAGTTTCAATTTGT
 GAATGTGATGAGCAATTTTCAAGTCCATTTCTGTGAGGTGTGAGCAAAACCTTGTGTTTCTGCTTTTTT
 GGAAAAGAGGAATTTGCCAAAATAGCAGTTCTGCTTATACTTATGAATGCCAAAAGGATCTTCCAGCCA
 AAATGGTGAACCTGATGTGAGTGTGTTTACCAATATTTACAGATTTGCTTTGTAAGAGCATTCAAACATCAT
 GTGAGTCATTTCTTTGAGGAATAACGCTACATGTAAGAAATGTGAGAAAGATTATCCTTGCAGCTGAT
 ATCAGGATTTACTGAAAAAACTGTGAGAAAGCAATTGACCACTGTAAACTGCTCAGCATCAACTGTCTG
 AATGAAGAATGGTGTTCATATAAATTGGAAGATTCAAATATGTATGCATTCCAGGGTGCACAAAAAATC
 CATGTTGGTTTTTGAAGAATGTTTACCTAATTCATCAACACCTCTGCTACTGTGGAGTCACTTCCATGG
 TATTTGCCAAGATAAAGGTCCTGCTCAATTTGAATATGTGTGGCAATTGGGATTTGCAGGATCTGAAGGC
 GAAAAGTGCCAAAGGGTTATTGATGCCTATTTCTTTCTGGCTGCAAACTGCACTGAAGATGCAACCTATG
 TGAACGATCCTGAAGATAAATAATTTCTCATGTTGGTCCCACATGAAGGCACAAAAGAGATTTGTGCAA
 TGGATGCAGTTGTTGAGTGAAGAAGACAGTCAGGAATATCGGTATCTATGTTTTCTCAGATGGGCTGGC
 AACATGTATCTGAAAAACAACCTGATGATCAAGAAAATGAGTGTCAACATGAAGCTGTTTGTAAAGATG
 AAATTAATAGACCCAGGTATTTATGTATCATT

ACGCGTACGCGGCCGCTCGAGCAGAAACTCATCTCAGAAGAGGATCTGGCAGCAAATGATATCCTGGATT
 ACAAGGATGACGACGATAAGGTTTAA

Protein Sequence:

>RC221392 protein sequence
 Red=Cloning site Green=Tags(s)

MTDKSIVILSLMVFHSSFINGKTCRRQLVEEWHQPSSYVVNWTLTENICLDFYRDCWFLGVNTKIDTSG
 NQAVPQICPLQIQLGDILVISSEPSLQFPEINLMNVSETSFVGCVQNTTMDQLLFGCRLKGMHTVNSKW
 LSVGTHYFITVMASGSPSPCLGLRLNVTVKQFCQESLSSEFCSGHGKCLSEAWSKTYSCHCQPPFSGKY
 CQELDACSFKPCKNNGSCINKRENWDEQAYECVCHPPFTGKNCSEIIGQCQPHVCFHGNCNITSNSFIC
 ECDEQFSQPFCEVSAKPCVSLLFWKRGICPNSSAYTYECPKGSQNGETDVSEFSLVPCQNGTDCIKI
 SNDVMCICSPIFTDLLCKSIQTSCESEFLRNNATCKKCEKDYPSCSISGFTEKNCEKAIDHCKLLSINCL
 NEEWCFNIIIGRFKYVICPGCTKNPCWFLKNVYL IHQHL CYGVTFHIGICQDKGPAQFEYVWQLGFAGSEG
 EKCGVIDAYFFLAANCTEDATYVNDPEDNNSCWFPHEGTEICANGCSCLSEEDSQEYRYL CFLRWAG
 NMYLENTTDDQENECQHEAVCKDEINRPRYL CII

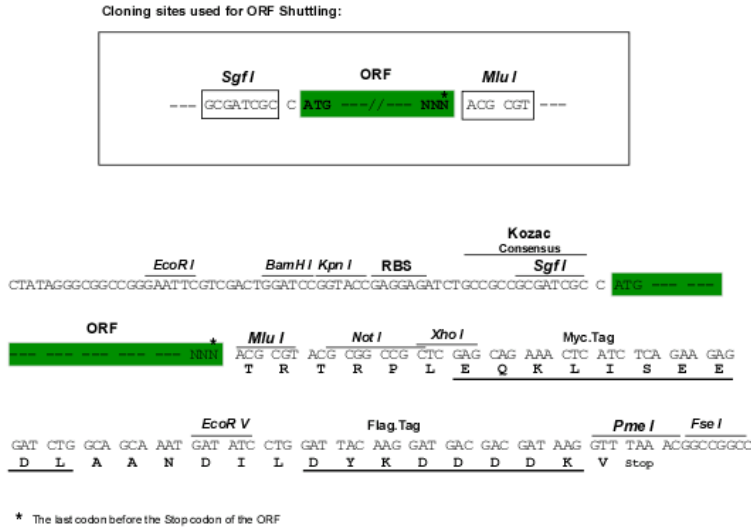
TRTRPLEQKLISEEDLAANDILDYKDDDDKV

Chromatograms:

https://cdn.origene.com/chromatograms/mk6471_a04.zip

Restriction Sites: SgfI-MluI

Cloning Scheme:



ACCN: NM_198283

ORF Size: 1782 bp

OTI Disclaimer: The molecular sequence of this clone aligns with the gene accession number as a point of reference only. However, individual transcript sequences of the same gene can differ through naturally occurring variations (e.g. polymorphisms), each with its own valid existence. This clone is substantially in agreement with the reference, but a complete review of all prevailing variants is recommended prior to use. [More info](#)

OTI Annotation: This clone was engineered to express the complete ORF with an expression tag. Expression varies depending on the nature of the gene.

Components: The ORF clone is ion-exchange column purified and shipped in a 2D barcoded Matrix tube containing 10ug of transfection-ready, dried plasmid DNA (reconstitute with 100 ul of water).

Reconstitution Method:

1. Centrifuge at 5,000xg for 5min.
2. Carefully open the tube and add 100ul of sterile water to dissolve the DNA.
3. Close the tube and incubate for 10 minutes at room temperature.
4. Briefly vortex the tube and then do a quick spin (less than 5000xg) to concentrate the liquid at the bottom.
5. Store the suspended plasmid at -20°C. The DNA is stable for at least one year from date of shipping when stored at -20°C.

RefSeq: [NM_198283.1](#), [NP_938024.1](#)

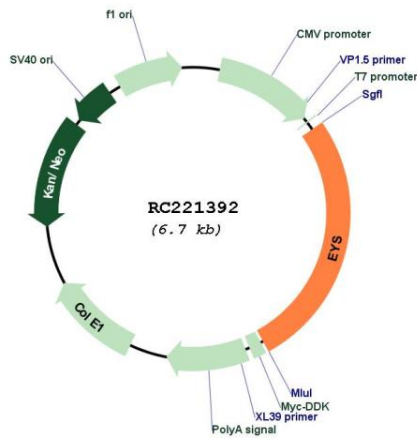
RefSeq Size: 2245 bp

RefSeq ORF: 1785 bp

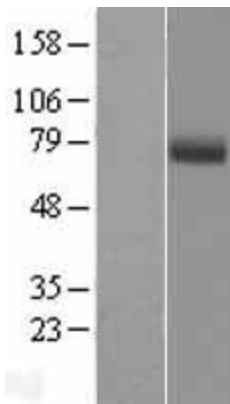
Locus ID: 346007

UniProt ID: [Q5T1H1](#)
Cytogenetics: 6q12
Protein Families: Druggable Genome
MW: 66.9 kDa
Gene Summary: The product of this gene contains multiple epidermal growth factor (EGF)-like and LamG domains. The protein is expressed in the photoreceptor layer of the retina, and the gene is mutated in autosomal recessive retinitis pigmentosa. Multiple transcript variants encoding different isoforms have been found for this gene. [provided by RefSeq, Dec 2008]

Product images:



Circular map for RC221392



Western blot validation of overexpression lysate (Cat# [LY405007]) using anti-DDK antibody (Cat# [TA50011-100]). Left: Cell lysates from untransfected HEK293T cells; Right: Cell lysates from HEK293T cells transfected with RC221392 using transfection reagent MegaTran 2.0 (Cat# [TT210002]).