

Product datasheet for RC221390

EMA (MUC1) (NM_001018016) Human Tagged ORF Clone

Product data:

Product Type:	Expression Plasmids
Product Name:	EMA (MUC1) (NM_001018016) Human Tagged ORF Clone
Tag:	Myc-DDK
Symbol:	EMA
Synonyms:	ADMCKD; ADMCKD1; ADTKD2; CA 15-3; CD227; EMA; H23AG; KL-6; MAM6; MCD; MCKD; MCKD1; MUC-1; MUC-1/SEC; MUC-1/X; MUC1/ZD; PEM; PEMT; PUM
Mammalian Cell Selection:	Neomycin
Vector:	pCMV6-Entry (PS100001)
E. coli Selection:	Kanamycin (25 ug/mL)
ORF Nucleotide Sequence:	>RC221390 ORF sequence Red=Cloning site Blue=ORF Green=Tags(s)

TTTTGTAATACGACTCACTATAGGGCGGCCGGAATTCGTCGACTGGATCCGGTACCGAGGAGATCTGCC
GCCGCGATCGCC

ATGACACCGGGCACCCAGTCTCCTTTCTTCTGCTGCTGCTCCTCACAGTGCTTACAGCTACCACAGCCC
CTAAACCCGCAACAGTTGTTACGGGTTCTGGTCATGCAAGCTCTACCCAGGTGGAGAAAAGGAGACTTC
GGCTACCCAGAGAAGTTCAGTGCCAGCTCTACTGAGAAGAATGCTTTTAATTCCTCTGGAAGATCCC
AGCACCGACTACTACCAAGAGCTGCAGAGAGACATTTCTGAAATGTTTTGCAGATTTATAACAAGGGG
GTTTTCTGGCCCTCTCCAATATTAAGTTCAGGCCAGGATCTGTGGTGGTACAATTGACTCTGGCCTCCG
AGAAGGTACCATCAATGTCCACGACGTGGAGACACAGTTCAATCAGTATAAACGGAAGCAGCCTCTCGA
TATAACCTGACGATCTCAGACGTCAGCGTGAGTGATGTGCCATTTCTTTCTCTGCCAGCTGGGGCTG
GGGTGCCAGGCTGGGCATCGCGCTGCTGGTCTGTGTTCTGGTTGCGCTGGCCATTGTCTATCT
CATTGCCTTGGCTGTCTGTGTCAGTGCCGCCGAAAGAACTACGGGCAGCTGGACATCTTTCCAGCCCGGAT
ACCTACCATCCTATGAGCGAGTACCCACCTACCACCCATGGGCGCTATGTGCCCCCTAGCAGTACCG
ATCGTAGCCCCTATGAGAAGTTTCTGCAGGTAATGGTGGCAGCAGCCTCTTTACACAAACCCAGCAGT
GGCAGCCACTTCTGCCAATTG

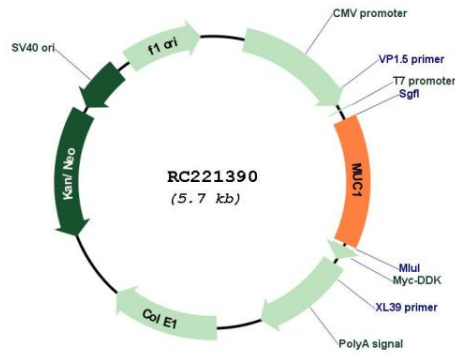
ACGCGTACGCGGCCGCTCGAGCAGAACTCATCTCAGAAGAGGATCTGGCAGCAATGATATCTGGATT
ACAAGGATGACGACGATAAGGTTTAA



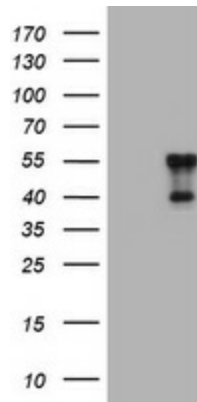
[View online »](#)

Reconstitution Method:	<ol style="list-style-type: none">1. Centrifuge at 5,000xg for 5min.2. Carefully open the tube and add 100ul of sterile water to dissolve the DNA.3. Close the tube and incubate for 10 minutes at room temperature.4. Briefly vortex the tube and then do a quick spin (less than 5000xg) to concentrate the liquid at the bottom.5. Store the suspended plasmid at -20°C. The DNA is stable for at least one year from date of shipping when stored at -20°C.
RefSeq:	NM_001018016.3
RefSeq Size:	1193 bp
RefSeq ORF:	795 bp
Locus ID:	4582
UniProt ID:	P15941
Cytogenetics:	1q22
Protein Families:	Druggable Genome, Secreted Protein, Transmembrane
MW:	28.4 kDa
Gene Summary:	<p>This gene encodes a membrane-bound protein that is a member of the mucin family. Mucins are O-glycosylated proteins that play an essential role in forming protective mucous barriers on epithelial surfaces. These proteins also play a role in intracellular signaling. This protein is expressed on the apical surface of epithelial cells that line the mucosal surfaces of many different tissues including lung, breast stomach and pancreas. This protein is proteolytically cleaved into alpha and beta subunits that form a heterodimeric complex. The N-terminal alpha subunit functions in cell-adhesion and the C-terminal beta subunit is involved in cell signaling. Overexpression, aberrant intracellular localization, and changes in glycosylation of this protein have been associated with carcinomas. This gene is known to contain a highly polymorphic variable number tandem repeats (VNTR) domain. Alternate splicing results in multiple transcript variants.[provided by RefSeq, Feb 2011]</p>

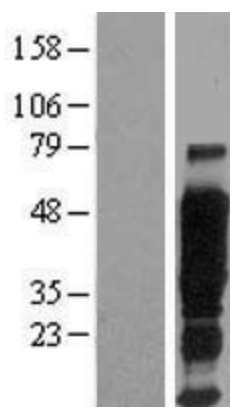
Product images:



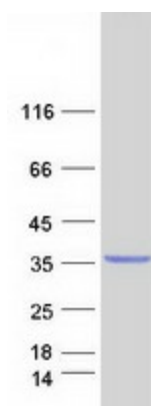
Circular map for RC221390



HEK293T cells were transfected with the pCMV6-ENTRY control (Cat# [PS100001], Left lane) or pCMV6-ENTRY MUC1 (Cat# RC221390, Right lane) cDNA for 48 hrs and lysed. Equivalent amounts of cell lysates (5 ug per lane) were separated by SDS-PAGE and immunoblotted with anti-MUC1 (Cat# [TA800790]). Positive lysates [LY422694] (100ug) and [LC422694] (20ug) can be purchased separately from OriGene.



Western blot validation of overexpression lysate (Cat# [LY422694]) using anti-DDK antibody (Cat# [TA50011-100]). Left: Cell lysates from untransfected HEK293T cells; Right: Cell lysates from HEK293T cells transfected with RC221390 using transfection reagent MegaTran 2.0 (Cat# [TT210002]).



Coomassie blue staining of purified MUC1 protein (Cat# [TP321390]). The protein was produced from HEK293T cells transfected with MUC1 cDNA clone (Cat# RC221390) using MegaTran 2.0 (Cat# [TT210002]).