

Product datasheet for **RC221379**

CD21 (CR2) (NM_001877) Human Tagged ORF Clone

Product data:

| | |
|---------------------------|---|
| Product Type: | Expression Plasmids |
| Product Name: | CD21 (CR2) (NM_001877) Human Tagged ORF Clone |
| Tag: | Myc-DDK |
| Symbol: | CD21 |
| Synonyms: | C3DR; CD21; CR; CVID7; SLEB9 |
| Mammalian Cell Selection: | Neomycin |
| Vector: | pCMV6-Entry (PS100001) |
| E. coli Selection: | Kanamycin (25 ug/mL) |
| ORF Nucleotide Sequence: | >RC221379 ORF sequence Red=Cloning site Blue=ORF Green=Tags(s) |

TTTTGTAATACGACTCACTATAGGGCGGCCGGAATTCGTCGACTGGATCCGGTACCGAGGAGATCTGCC
GCC**CGATCGCC**

ATGGGCGCCGGGCTGCTCGGGTTTTCTTGGCTCTCGTCGCACCGGGGGTCTCGGGATTTCTGTG
GCTCTCCTCCGCCTATCCTAAATGGCCGATTAGTTATTATTCTACCCCATTCGTTGGTACCGTGT
AAGGTACAGTTGTTCAAGTACCTCCGCCTCATTGGAGAAAAAGTCTATTATGCATAACTAAAGACAAA
GTGGATGGAACCTGGGATAAACCTGCTCCTAAATGTGAATATTTCAATAAATATTCTTCTGCCCTGAGC
CCATAGTACCAGGAGGATACAAAATTAGAGGCTCTACCCCTACAGACATGGTATTCTGTGACATTTGC
CTGTAAAACCAACTTCTCCATGAACGGAAACAAGTCTGTTTGGTGTCAAGCAAATAATATGTGGGGCCG
ACACGACTACCAACCTGTGTAAGTGTTCCTCTCGAGTGTCCAGCACTTCTATGATCCACAATGGAC
ATCACACAAGTGAGAATGTTGGCTCCATTGCTCCAGGATTGTCTGTGACTTACAGCTGTGAATCTGGTTA
CTTGCTTGTGGGAAAAAGATCATTAACTGTTTGTCTTCGGGAAAATGGAGTGTGTCCCCCACCATGT
GAAGAGGCACGCTGTAATCTCTAGGACGATTTCCCAATGGGAAGGTAAGGAGCCTCCAATTCTCCGGG
TTGGTGAAGTCAAACCTTTTTCTGTGATGAAGGTATCGACTGCAAGGCCACCTTCTAGTCGGTGTGT
AATTGCTGGACAGGGAGTTGCTTGGACAAAATGCCAGTATGTGAAGAAATTTTTGCCCATCACCTCCC
CCTATTCTCAATGGAAGACATATAGGCACTCACTAGCAATGTCTCATATGGAAGCATAGTCACTTACA
CTGTGACCCGGACCCAGAGGAAGGAGTGAACCTCATCCTTATTGGAGAGAGCACTCTCCGTTGTACAGT
TGATAGTCAGAAGACTGGGACCTGGAGTGGCCCTGCCCCACGCTGTGAACCTTCTACTTCTGCGGTTGAG
TGTCCACATCCCCAGATCCTAAGAGGCCGAATGGTATCTGGGCAGAAAGATCGATATACCTATAACGACA
CTGTGATATTTGCTTGCATGTTTGGCTTACCTTGAAGGCAGCAAGCAAATCCGATGCAATGCCAAGG
CACATGGGAGCCATCTGCACCAGTCTGTGAAAAGGAATGCCAGGCCCTCCTAACATCCTCAATGGGCAA
AAGGAAGATAGACACATGGTCCGCTTTGACCCTGGAACATCTATAAAATATAGCTGTAACCTGGCTATG
TGCTGGTGGGAGAAGAATCCATACAGTGTACCTCTGAGGGGTGTGGACACCCCTGTACCCCAATGCAA
AGTGGCAGCGTGAAGCTACAGGAAGGCAACTTTGACAAAACCCAGCACCAATTTGTTAGACCAGAT



[View online >](#)

GTCAACTCTTCTTGTGGTGAAGGTACAAGTTAAGTGGGAGTGTTTATCAGGAGTGTCAAGGCACAATTC
 CTTGGTTTATGGAGATTCGTCTTTGTAAGAAATCACCTGCCACCACCCCTGTATCTACAATGGGGC
 ACACACCGGGAGTTCTTAGAAGATTTCCATATGGAACCACGGTCACTTACACATGTAACCCTGGGCCA
 GAAAGAGGAGTGGAAATTCAGCCTCATTGGAGAGAGCACCATCCGTTGTACAAGCAATGATCAAGAAAAG
 GCACCTGGAGTGGCCCTGCTCCCTATGTAACCTTTCCCTCCTGCTGTCCAGTGTCCACATGTCCATAT
 TGCAAAATGGATAACAAGATATCTGGCAAGGAAGCCCATATTTCTACAATGACACTGTGACATCAAGTGT
 TATAGTGGATTTACTTTGAAGGGCAATAGTCAGATTCGTTGCAAAGCTGATAACACCTGGGATCCGTAAA
 TACCAGTTTGTGAAAAAGAAACATGCCAGCATGTGAGACAGAGTCTTCAAGAACTTCCAGCTGGTTCAG
 TGTGGAGCTAGTTAATACGTCCTGCCAAGATGGGTACCAGTTGACTGGACATGCTTATCAGATGTGTCAA
 GATGCTGAAAAATGGAATTTGGTTCAAAAAGATTCCACTTTGTAAGTTATTCACTGTCCACCTCCACCAG
 TGATTGTCAATGGGAAGCACACAGGCATGATGGCAGAAAATTTCTATATGGAAATGAAGTCTCTTATGA
 ATGTGACCAAGGATTCATCTCCTGGGAGAGAAAAATTCAGTGCAGAAAGTATTCTAAAGGACATGGA
 TCTTGGAGCGGCCTTCCCACAGTGTACGATCTCCTCCTGTGACTCGCTGCCCTAATCCAGAAGTCA
 AACATGGGTACAAGCTCAATAAAACACATTCTGCATATCCACAATGACATAGTGTATGTTGACTGCAA
 TCCTGGCTTCATCATGAATGGTAGTCGCGTGATTAGGTGCATACTGATAACACATGGGTGCCAGGTGTG
 CCAACTGTATCAAAAAAGCCTTCATAGGGTGTCCACCTCCGCCTAAGACCCCTAACGGGAACCATACTG
 GTGGAAACATAGCTCGATTTTCTCCTGGAATGTCAATCCTGTACAGCTGTGACCAAGGCTACCTGCTGGT
 GGGAGAGGCACTCCTTCTTGCACACATGAGGGAACCTGGAGCCAACCTGCCCTCATTGTAAGAGGTA
 AACTGTAGCTCACCAGCAGATATGGATGGAATCCAGAAAGGGCTGGAACCAAGGAAAAATGTATCAGTATG
 GAGCTGTTGTAAGTCTGGAGTGTGAAGTGGGTATATGCTGGAAGGCAGTCCCAGAGCCAGTGCCAATC
 GGATCACCATGGAACCTCCCCTGGCGGTTTGCAGATCCCGTCACTTGCTCCTGTCTTTGTGGTATT
 GCTGCAGGTTTGATACTTCTACCTTCTGATTGTATTACCTTATACGTGATATCAAAAACAGAGAAC
 GCAATTATTATACAGATAACAAGCCAGAAAGAAGCTTTTCATTTAGAAGCACGAGAAGTATATTCTGTTGA
 TCCATACAACCCAGCCAGC

ACGCGTACGCGGCCGCTCGAGCAGAACTCATCTCAGAAGAGGATCTGGCAGCAATGATATCCTGGATT
 ACAAGGATGACGACGATAAGGTTTAA

Protein Sequence:

>RC221379 protein sequence
 Red=Cloning site Green=Tags(s)

MGAAGLLGVFLALVAPGVLGISCGSPPIINGRISYYSTPIAVGTVIRYSCSGTFRLLIGEKSLLCITKDK
 VDGTWDPKAPKCEYFNKYSSCEPIVPGGYKIRGSTPYRHGDSVTFACKTNFSMNGNKSVCQANNMWGP
 TRLPTCVSVFPLECPALPMIHNGHHTSENVGSIAPGLSVTYSCESGYLLVGEKIINCLSSGKWSAVPPTC
 EEARCKSLGRFPNGKVKEPPIILRVGVTANFFCDEGYRLQPPSSRCVIAGQGVAVWKMPVCEEIFCPSPP
 PILNGRHIGNSLANVSYGSIVTYTCDPDPEEGVNFILIGESTLRCTVDSQKTGTWSGPAPRCELSTSAVQ
 CPHPQILRGRMVSQKDRYTYNDTVIFACMFGFTLKGSKQIRCNAQGTWEPSPAPVCEKECQAPPNINLNGQ
 KEDRHMVRFDPGTSIKYSCNPGYVLVGEESIQTSEGVWTPPVQCKVAACEATGRQLLTKPQHVFVRPD
 VNSSCGEGYKLSGSVYQECQGTIPWFMEIRLCKEITCPPPPVIYNGAHTGSSLEDFPYGTTVITYTNP
 ERGVEFSLIGESTIRCTSNQERGTWSGPAPLCKLSLLAVQCSHVHIANGYKISGKEAPYFYNDTVTFKC
 YSGFTLKGNSQIRCKADNTWDPEIPVCEKETCQHVRQSLQELPAGSRVELVNTSCQDGYQLTGHAYQMCQ
 DAENGIWFKIPLCKVIHCHPPPVIIVNGKHTGMAENFLYNEVSYECDQGFYLLGEKLLQCRSDSKGHG
 SWSGSPQCLRSPPVTRCPNPEVKHGYKLNKTHSAYSHNDIVYVDCNPGFIMNGSRVIRCHTDNTWVPGV
 PTCIKKAFIGCPPPKTPNGNHTGGNIARFSPGMSILYSCDQGYLLVGEALLLCTHEGTWSQPAPHCKEV
 NCSSPADMDGIQKLEPRKMYQYGAVVTLCECDGYMLEGSPQSQCSDHQWNPPLAVCRSRSLAPVLCGI
 AAGLILLTFLIVITLYVISKHRERNYYTDSQKEAFHLEAREVYSDPYNPAS

TRTRPLEQKLISEEDLAANDILDYKDDDDKV

Chromatograms:

https://cdn.origene.com/chromatograms/mk6717_d08.zip

Restriction Sites:

Sgfl-Mlul

Cloning Scheme:


ACCN: NM_001877

ORF Size: 3099 bp

OTI Disclaimer: The molecular sequence of this clone aligns with the gene accession number as a point of reference only. However, individual transcript sequences of the same gene can differ through naturally occurring variations (e.g. polymorphisms), each with its own valid existence. This clone is substantially in agreement with the reference, but a complete review of all prevailing variants is recommended prior to use. [More info](#)

OTI Annotation: This clone was engineered to express the complete ORF with an expression tag. Expression varies depending on the nature of the gene.

Components: The ORF clone is ion-exchange column purified and shipped in a 2D barcoded Matrix tube containing 10ug of transfection-ready, dried plasmid DNA (reconstitute with 100 ul of water).

- Reconstitution Method:**
1. Centrifuge at 5,000xg for 5min.
 2. Carefully open the tube and add 100ul of sterile water to dissolve the DNA.
 3. Close the tube and incubate for 10 minutes at room temperature.
 4. Briefly vortex the tube and then do a quick spin (less than 5000xg) to concentrate the liquid at the bottom.
 5. Store the suspended plasmid at -20°C. The DNA is stable for at least one year from date of shipping when stored at -20°C.

RefSeq: [NM_001877.5](#)

RefSeq Size: 4007 bp

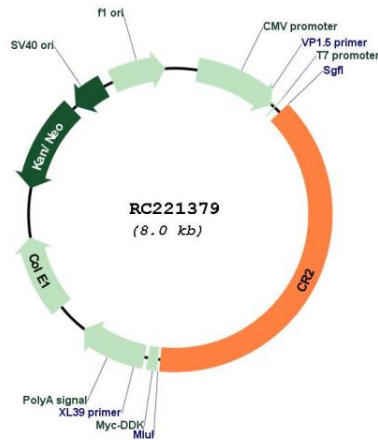
RefSeq ORF: 3102 bp

Locus ID: 1380

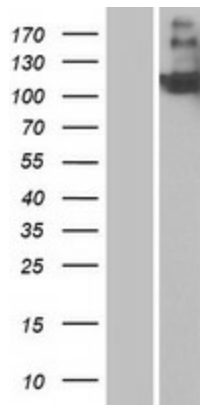
UniProt ID: [P20023](#)

Cytogenetics: 1q32.2
Domains: CCP
Protein Families: Druggable Genome, Transmembrane
Protein Pathways: B cell receptor signaling pathway, Complement and coagulation cascades, Hematopoietic cell lineage
MW: 113 kDa
Gene Summary: This gene encodes a membrane protein, which functions as a receptor for Epstein-Barr virus (EBV) binding on B and T lymphocytes. Genetic variations in this gene are associated with susceptibility to systemic lupus erythematosus type 9 (SLEB9). Alternatively spliced transcript variants encoding different isoforms have been found for this gene.[provided by RefSeq, Sep 2009]

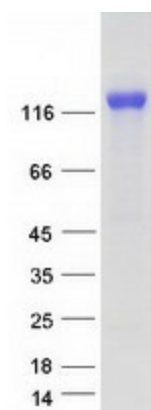
Product images:



Circular map for RC221379



Western blot validation of overexpression lysate (Cat# [LY419676]) using anti-DDK antibody (Cat# [TA50011-100]). Left: Cell lysates from untransfected HEK293T cells; Right: Cell lysates from HEK293T cells transfected with RC221379 using transfection reagent MegaTran 2.0 (Cat# [TT210002]).



Coomassie blue staining of purified CR2 protein (Cat# [TP321379]). The protein was produced from HEK293T cells transfected with CR2 cDNA clone (Cat# RC221379) using MegaTran 2.0 (Cat# [TT210002]).