

Product datasheet for RC221376

GDNF (NM_000514) Human Tagged ORF Clone

Product data:

Product Type:	Expression Plasmids
Product Name:	GDNF (NM_000514) Human Tagged ORF Clone
Tag:	Myc-DDK
Symbol:	GDNF
Synonyms:	ATF; ATF1; ATF2; HFB1-GDNF; HSCR3
Mammalian Cell Selection:	Neomycin
Vector:	pCMV6-Entry (PS100001)
E. coli Selection:	Kanamycin (25 ug/mL)
ORF Nucleotide Sequence:	>RC221376 representing NM_000514 Red=Cloning site Blue=ORF Green=Tags(s)

TTTTGTAATACGACTCACTATAGGGCGCCGGGAATTCGTCGACTGGATCCGGTACCGAGGAGATCTGCC
GCC**CGATCGCC**

ATGAAGTTATGGGATGTCGTGGCTGTCTGCCTGGTGTGCTCCACACCGGTCCGCCTTCCCGCTGCCCG
CCGGTAAGAGGCCTCCCGAGGCGCCCGCGAAGACCGCTCCCTCGGCCCGCCGCGCCCTTTCGCGT
GAGCAGTGACTCAAATATGCCAGAGGATTATCCTGATCAGTTCGATGATGTCATGGATTTTATTCAAGCC
ACCATTAAGAGCTGAAAAGTCCAGATAAAACAAATGGCAGTGCTTCTAGAAGAGAGCGGAATCGGC
AGGCTGCAGTGCCAACCCAGAGAATCCAGAGAAAAGGTCCGAGAGGCCAGAGGGGCAAAAACCGGGG
TTGTGTCTTAACTGCAATACATTTAAATGTCAGTACTGGGTCTGGGCTATGAAACCAAGGAGAACTG
ATTTTTAGGTAAGTGCAGCGGCTCTTGCAGTGCAGCTGAGACAACGTACGACAAAATATTGAAAACTTAT
CCAGAAATAGAAGGCTGGTGAAGTACAAAGTAGGGCAGGCATGTTGCAGACCCATCGCCTTTGATGATGA
CCTGTCGTTTTTATAGATGATAACCTGGTTTACCATATTCTAAGAAAGCATTCCGCTAAAAGGTGTGGATGT
ATC

ACGCGTACGCGGCGCTCGAGCAGAACTCATCTCAGAAGAGGATCTGGCAGCAAATGATATCCTGGATT
ACAAGGATGACGACGATAAGGTTTAA



[View online »](#)

Protein Sequence: >RC221376 representing NM_000514
Red=Cloning site Green=Tags(s)

MKLWDVVAVCLVLLHTASAFPLPAGKRPPEAPAEDRSLGRRRAPFALSSDSNMPEDYPDQFDDVMDFIQA
 TIKRLKRSPDKQMAVLP RRERNRQAAAA NPENSRGKGRRGQRGKNRGCVLTAIHLNVTDLGLGYETKEEL
 IFRYCSGSCDAAETTYDKILKNLSRNRRLVSDKVGQACCRPIAFDDDL SFLDDNLVYHILRKHS AKRCCG
 I

TRTRPLEQKLISEEDLAANDILDYKDDDDKV

Chromatograms: https://cdn.origene.com/chromatograms/mg3921_e06.zip

Restriction Sites: SgfI-MluI

Cloning Scheme:



ACCN: NM_000514

ORF Size: 633 bp

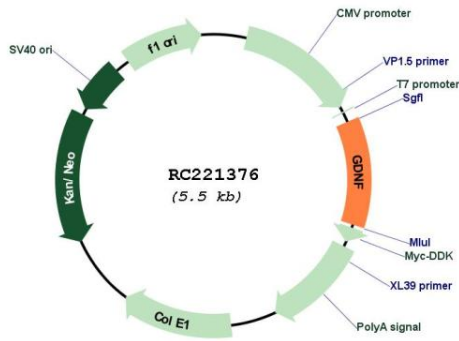
OTI Disclaimer: Due to the inherent nature of this plasmid, standard methods to replicate additional amounts of DNA in E. coli are highly likely to result in mutations and/or rearrangements. Therefore, OriGene does not guarantee the capability to replicate this plasmid DNA. Additional amounts of DNA can be purchased from OriGene with batch-specific, full-sequence verification at a reduced cost. Please contact our customer care team at custsupport@origene.com or by calling 301.340.3188 option 3 for pricing and delivery.

The molecular sequence of this clone aligns with the gene accession number as a point of reference only. However, individual transcript sequences of the same gene can differ through naturally occurring variations (e.g. polymorphisms), each with its own valid existence. This clone is substantially in agreement with the reference, but a complete review of all prevailing variants is recommended prior to use. [More info](#)

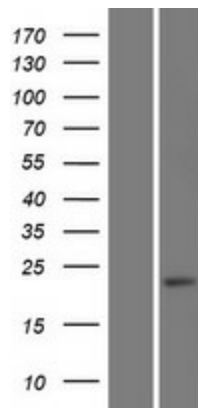
OTI Annotation: This clone was engineered to express the complete ORF with an expression tag. Expression varies depending on the nature of the gene.

Components:	The ORF clone is ion-exchange column purified and shipped in a 2D barcoded Matrix tube containing 10ug of transfection-ready, dried plasmid DNA (reconstitute with 100 ul of water).
Reconstitution Method:	<ol style="list-style-type: none">1. Centrifuge at 5,000xg for 5min.2. Carefully open the tube and add 100ul of sterile water to dissolve the DNA.3. Close the tube and incubate for 10 minutes at room temperature.4. Briefly vortex the tube and then do a quick spin (less than 5000xg) to concentrate the liquid at the bottom.5. Store the suspended plasmid at -20°C. The DNA is stable for at least one year from date of shipping when stored at -20°C.
Note:	Plasmids are not sterile. For experiments where strict sterility is required, filtration with 0.22um filter is required.
RefSeq:	NM_000514.4
RefSeq Size:	836 bp
RefSeq ORF:	636 bp
Locus ID:	2668
UniProt ID:	P39905
Cytogenetics:	5p13.2
Protein Families:	Druggable Genome, Secreted Protein, Transmembrane
MW:	23.72 kDa
Gene Summary:	This gene encodes a secreted ligand of the TGF-beta (transforming growth factor-beta) superfamily of proteins. Ligands of this family bind various TGF-beta receptors leading to recruitment and activation of SMAD family transcription factors that regulate gene expression. The encoded preproprotein is proteolytically processed to generate each subunit of the disulfide-linked homodimer. The recombinant form of this protein, a highly conserved neurotrophic factor, was shown to promote the survival and differentiation of dopaminergic neurons in culture, and was able to prevent apoptosis of motor neurons induced by axotomy. This protein is a ligand for the product of the RET (rearranged during transfection) protooncogene. Mutations in this gene may be associated with Hirschsprung disease and Tourette syndrome. This gene encodes multiple protein isoforms that may undergo similar proteolytic processing. [provided by RefSeq, Aug 2016]

Product images:



Circular map for RC221376



Western blot validation of overexpression lysate (Cat# [LY424672]) using anti-DDK antibody (Cat# [TA50011-100]). Left: Cell lysates from untransfected HEK293T cells; Right: Cell lysates from HEK293T cells transfected with RC221376 using transfection reagent MegaTran 2.0 (Cat# [TT210002]).