

Product datasheet for RC221372

EOLA1 (NM_178124) Human Tagged ORF Clone

Product data:

Product Type: Expression Plasmids
Product Name: EOLA1 (NM_178124) Human Tagged ORF Clone
Tag: Myc-DDK
Symbol: EOLA1
Synonyms: CXorf40; CXorf40A
Mammalian Cell Selection: Neomycin
Vector: pCMV6-Entry (PS100001)
E. coli Selection: Kanamycin (25 ug/mL)
ORF Nucleotide Sequence: >RC221372 ORF sequence
Red=Cloning site Blue=ORF Green=Tags(s)

TTTTGTAATACGACTCACTATAGGGCGGCCGGAATTCGTCGACTGGATCCGGTACCGAGGAGATCTGCC
GCC**CGATCGCC**

ATGAAGTTTGGCTGCCTCTCCTCCGGCAGCCTTATGCTGGCTTTGTCTTAAATGGAATCAAGACTGTGG
AGACGCGCTGGCGTCCCCTGCTGAGCAGCCAGCGGAACGTACCATCGCCGTCCACATTGCTCACAGGGA
CTGGGAAGGCGATGCCTGGCGGGAGCTGCTGGTGGAGAGACTCGGGATGACTCCTGCTCAGATTGAGGCC
TTGCTCAGGAAAGGGGAAAAGTTTGGTCGAGGAGTGATAGCGGGACTCGTTGACATTGGGAAAACCTTGC
AATGCCCGAAGACTTAACTCCCGATGAGGTTGTGGAAGTAAAGAAATCAAGCTGTACTGACCAACCTGAA
GCAGAAGTACCTGACTGTGATTTCAAACCCAGGTGGTTACTGGAGCCATACCTAGGAAAGGAGGCAAG
GATGTATTCCAGGTAGACATCCCAGAGCACCTGATCCCTTGGGGCATGAAGT

ACGCGTACGCGGCCGCTCGAGCAGAACTCATCTCAGAAGAGGATCTGGCAGCAAATGATATCCTGGATT
ACAAGGATGACGACGATAAGGTTTAA

Protein Sequence: >RC221372 protein sequence
Red=Cloning site Green=Tags(s)

MKFGCLSFRQPYAGFVNLNGIKTVETRWRLSSQRNCTIAVHIAHRDWEGDWRELLVERLGMTPAQIQAL
LLRKGEKFRGVIAGLVDIGETLQCPEDLTPDEVLELQAVLTNLKQKYLTVISNPRWLLLEIPRKGK
DVFQVDIPEHLIPLGHEV

TRTRPLEQKLISEEDLAANDILDYKDDDDKV

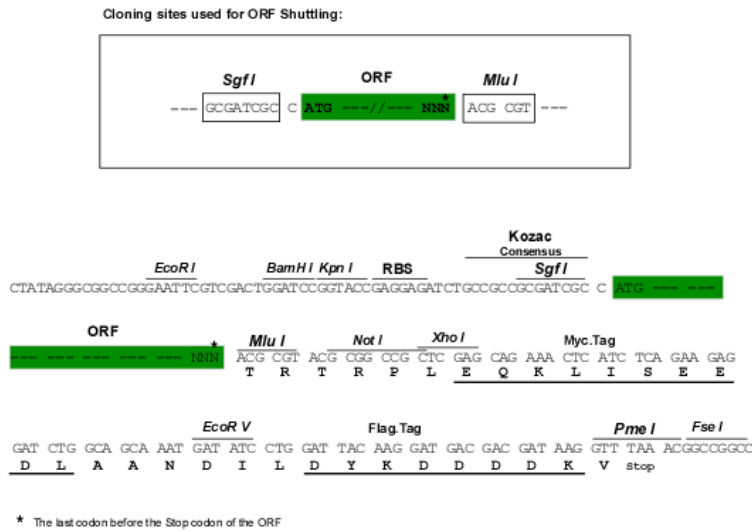
Chromatograms: https://cdn.origene.com/chromatograms/mk6357_a08.zip



[View online »](#)

Restriction Sites: Sgfl-MluI

Cloning Scheme:



ACCN: NM_178124

ORF Size: 474 bp

OTI Disclaimer: The molecular sequence of this clone aligns with the gene accession number as a point of reference only. However, individual transcript sequences of the same gene can differ through naturally occurring variations (e.g. polymorphisms), each with its own valid existence. This clone is substantially in agreement with the reference, but a complete review of all prevailing variants is recommended prior to use. [More info](#)

OTI Annotation: This clone was engineered to express the complete ORF with an expression tag. Expression varies depending on the nature of the gene.

Components: The ORF clone is ion-exchange column purified and shipped in a 2D barcoded Matrix tube containing 10ug of transfection-ready, dried plasmid DNA (reconstitute with 100 ul of water).

Reconstitution Method:

1. Centrifuge at 5,000xg for 5min.
2. Carefully open the tube and add 100ul of sterile water to dissolve the DNA.
3. Close the tube and incubate for 10 minutes at room temperature.
4. Briefly vortex the tube and then do a quick spin (less than 5000xg) to concentrate the liquid at the bottom.
5. Store the suspended plasmid at -20°C. The DNA is stable for at least one year from date of shipping when stored at -20°C.

RefSeq: [NM_178124.6](#)

RefSeq Size: 2436 bp

RefSeq ORF: 477 bp

Locus ID: 91966

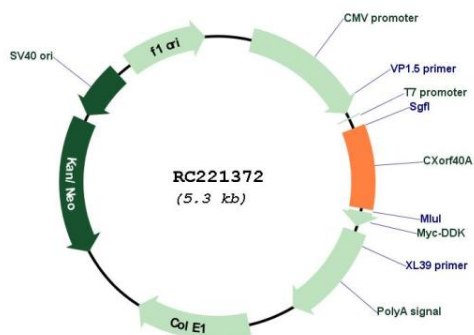
UniProt ID: [Q8TE69](#)

Cytogenetics: Xq28

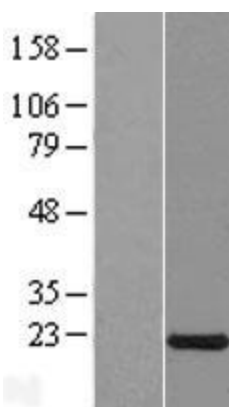
MW: 17.9 kDa

Gene Summary: May have an important role of cell protection in inflammation reaction.[UniProtKB/Swiss-Prot Function]

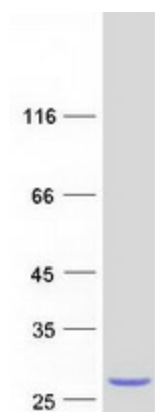
Product images:



Circular map for RC221372



Western blot validation of overexpression lysate (Cat# [LY406036]) using anti-DDK antibody (Cat# [TA50011-100]). Left: Cell lysates from untransfected HEK293T cells; Right: Cell lysates from HEK293T cells transfected with RC221372 using transfection reagent MegaTran 2.0 (Cat# [TT210002]).



Coomassie blue staining of purified CXorf40A protein (Cat# [TP321372]). The protein was produced from HEK293T cells transfected with CXorf40A cDNA clone (Cat# RC221372) using MegaTran 2.0 (Cat# [TT210002]).