

Product datasheet for RC221361

NPSR1 (NM_207173) Human Tagged ORF Clone

Product data:

Product Type:	Expression Plasmids
Product Name:	NPSR1 (NM_207173) Human Tagged ORF Clone
Tag:	Myc-DDK
Symbol:	NPSR1
Synonyms:	ASRT2; GPR154; GPRA; NPSR; PGR14; VRR1
Mammalian Cell Selection:	Neomycin
Vector:	pCMV6-Entry (PS100001)
E. coli Selection:	Kanamycin (25 ug/mL)
ORF Nucleotide Sequence:	>RC221361 ORF sequence Red=Cloning site Blue=ORF Green=Tags(s)

TTTTGTAATACGACTCACTATAGGGCGCCGGGAATTCGTCGACTGGATCCGGTACCGAGGAGATCTGCC
GCC**CGATCGCC**

ATGCCAGCCAAC TTCACAGAGGGCAGCTTCGATTCCAGTGGGACCGGGCAGACGCTGGATTCTTCCCAG
TGGCTTGACTGAAACAGTGACTTTTACTGAAGTGGTGGAAAGGAATGGGGTTCTTCTACTACTC
CTTTAAGACTGAGCAATTGATACTCTGTGGTCCTCTTTGTTTTACCATTGTTGGAACTCCGTTGTG
CTTTTTCCACATGGAGGAGAAAGAAGAAGTCAAGAATGACCTTCTTTGTGACTCAGCTGGCCATCACAG
ATTCTTTCACAGGACTGGTCAACATCTTGACAGATTAATTGGCGATTCACTGGAGACTTCACGGCACC
TGACCTGGTTTGCCGAGTGGTCCGCTATTTGCAGGTTGTGCTGCTACGCCTCTACCTAGTCCCTGGTG
TCCTCAGCATAGACAGATACCATGCCATCGTCTACCCCATGAAGTTCCTTCAAGGAGAAAAGCAAGCCA
GGGTCCTCATTGTGATCGCCTGGAGCCTGTCTTTCTGTTCTCCATTCCCACCCTGATCATATTTGGGAA
GAGGACTGTCCAACGGTGAAGTGCAGTGTGGGCCCTGTGGCCTGACGACTCCTACTGGACCCATAC
ATGACCATCGTGGCCTTCTGGTGTACTTCATCCCTCTGACAATCATCAGCATCATGTATGGCATTGTGA
TCCGAATATTTGGATAAAAGCAAAACCTACGAAACAGTGATTTCCAATGCTCAGATGGGAACTGTG
CAGCAGCTATAACCGAGGACTCATCTCAAAGGCAAAAATCAAGGCTATCAAGTATAGCATCATCATCATT
CTTGCCCTCATCTGCTGTTGGAGTCCATACTTCTGTTTGACATTTTGGACAATTTCAACCTCCTCCAG
ACACCCAGGAGCGTTTCTATGCCTCTGTGATCATTGAGAACCTGCCAGCATTGAATAGTGCCATCAACCC
CCTCATCTACTGTCTTCAGCAGCTCCATCTCTTTCCCTGCAGGGTATCCGTCTCCGTGAGCTCCAG
GAGGCTGCGCTAATGCTCTGCCCTCAACGAGAGAACTGGAAGGGTACTTGGCCAGGTGTACCTTCTGGG
CTTTCCAAGG

ACGCGTACGCGGCCGCTCGAGCAGAAACTCATCTCAGAAGAGGATCTGGCAGCAATGATATCCTGGATT
ACAAGGATGACGACGATAAGGTTTAA



[View online >](#)

Protein Sequence: >RC221361 protein sequence
Red=Cloning site Green=Tags(s)

MPANFTEGSFDSSGTGQTLDSSPVACTETVTFTEVVEGKEWGSFYYSFKTEQLITLWLVFVFTIVGNSV
 LFSTWRRKKKSRMTFFVTQLAITDSFTGLVNLTDINWRFTGDFAPDLVCRVRYLQVVLLYASTYVLV
 SLSIDRYHAIVYPMKFLQGEKQARVLIVIAWSLSFLFSIPTLIIFGKRTL SNGEVQCWALWPDDSYWTPY
 MTIVAFLVYFIPLTIISIMYGIVIRTIWIKSKTYETVISNCSDGKLCSSYNRGLISKAKIKAIKYSIIII
 LAFICCWSPYFLFDILDNFNLLPDTQERFYASVIIQNLPALNSAINPLIYCVFSSSISFPCRVIRLRQLQ
 EAALMLCPQRENWKGTPGVPSWALPR

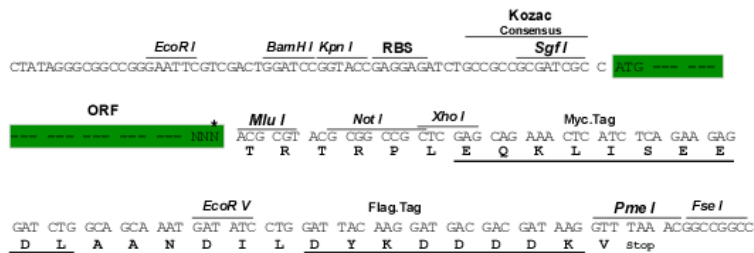
TRTRPLEQKLISEEDLAANDILDYKDDDDKV

Chromatograms: https://cdn.origene.com/chromatograms/mk6470_h01.zip

Restriction Sites: SgfI-MluI

Cloning Scheme:

Cloning sites used for ORF Shuttling:



* The last codon before the Stop codon of the ORF

ACCN: NM_207173

ORF Size: 1131 bp

OTI Disclaimer: The molecular sequence of this clone aligns with the gene accession number as a point of reference only. However, individual transcript sequences of the same gene can differ through naturally occurring variations (e.g. polymorphisms), each with its own valid existence. This clone is substantially in agreement with the reference, but a complete review of all prevailing variants is recommended prior to use. [More info](#)

OTI Annotation: This clone was engineered to express the complete ORF with an expression tag. Expression varies depending on the nature of the gene.

Components: The ORF clone is ion-exchange column purified and shipped in a 2D barcoded Matrix tube containing 10ug of transfection-ready, dried plasmid DNA (reconstitute with 100 ul of water).

Reconstitution Method:

1. Centrifuge at 5,000xg for 5min.
2. Carefully open the tube and add 100ul of sterile water to dissolve the DNA.
3. Close the tube and incubate for 10 minutes at room temperature.
4. Briefly vortex the tube and then do a quick spin (less than 5000xg) to concentrate the liquid at the bottom.
5. Store the suspended plasmid at -20°C. The DNA is stable for at least one year from date of shipping when stored at -20°C.

RefSeq: [NM_207173.2](#)

RefSeq Size: 1410 bp

RefSeq ORF: 1134 bp

Locus ID: 387129

UniProt ID: [Q6W5P4](#)

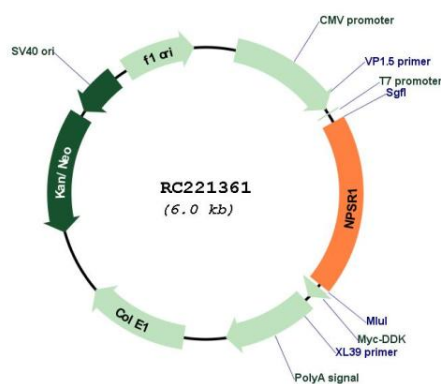
Cytogenetics: 7p14.3

Protein Families: Druggable Genome, Transmembrane

MW: 43.1 kDa

Gene Summary: This gene encodes a member of the vasopressin/oxytocin subfamily of G protein-coupled receptors. The encoded membrane protein acts as a receptor for neuropeptide S and affects a variety of cellular processes through its signaling. Increased expression of this gene in ciliated cells of the respiratory epithelium and in bronchial smooth muscle cells is associated with asthma. Polymorphisms in this gene have also been associated with asthma susceptibility, panic disorders, inflammatory bowel disease, and rheumatoid arthritis. Alternative splicing results in multiple transcript variants. [provided by RefSeq, Jul 2014]

Product images:



Circular map for RC221361