

Product datasheet for RC221360

MRC2 (NM_006039) Human Tagged ORF Clone

Product data:

Product Type: Expression Plasmids
Product Name: MRC2 (NM_006039) Human Tagged ORF Clone
Tag: Myc-DDK
Symbol: MRC2
Synonyms: CD280; CLEC13E; ENDO180; UPARAP
Mammalian Cell Selection: Neomycin
Vector: pCMV6-Entry (PS100001)
E. coli Selection: Kanamycin (25 ug/mL)
ORF Nucleotide Sequence: >RC221360 representing NM_006039
 Red=Cloning site Blue=ORF Green=Tags(s)

TTTTGTAATACGACTCACTATAGGGCGGCCGGAATTCGTCGACTGGATCCGGTACCGAGGAGATCTGCC
 GCC**CGATCGCC**

ATGGGGCCCGGCCGGCCGCCCCCGCGCCCTGGCCTCGTCACCTGCTGCGCTGCGTCTCTCGGGT
 GCCTGCACCTCGGCCGTCCCGGCCCCCTGGGGACGCCGCCCTCCCGGAACCAACGTCTTCTCATCTT
 CAGCCATGGACTGCAGGGCTGCCTGGAGGCCAGGGCGGGCAGGTGAGTACACCCGGCTTGAATACC
 AGCCTCCCTGCCAGCGCTGGAAGTGGTCTCCGAAACCGGCTATTCAACCTGGGTACCATGCAGTGCC
 TGGGCACAGGCTGGCCAGGCACCAACACCACGGCCTCCCTGGGCATGTATGAGTGTGACCGGAAGCACT
 GAATCTTCGCTGGCATTGTCGTACACTGGGTGACCAGCTGTCCTTGTCTCTGGGGCCCGCACCAAGCAAC
 ATATCCAAGCCTGGCACCCCTTGAGCGTGGTGACCAGACCCGAGTGGCCAGTGGCCGATCTACGGCAGCG
 AGGAGGACCTATGTGCTCTGCCCTACCACGAGGTCTACACCATCCAGGAAAACCTCCACGGAAAAGCCGTG
 CACCATCCCTTCAAATATGACAACCAAGTGGTTCACGGCTGCACCAGCACGGGCCGCGAGGATGGTCAC
 CTGTGGTGTGCCACCACCAGGACTACGGCAAAGACGAGCGCTGGGGCTTCTGCCCATCAAGAGTAACG
 ACTGCGAGACCTTCTGGGACAAGGACCAGCTGACTGACAGCTGTACCAGTTAACTTCCAGTCCACGCT
 GTCGTGGAGGGAGGCCTGGCCAGCTGCGAGCAGCAGGGTGGGATCTGCTGAGCATCACGGAGATCCAC
 GAGCAGACCTACATCAACGGCCTCCTCACTGGGTACAGCTCCACCCTGTGGATCGGCTTGAATGACTTGG
 ACACGAGCGGAGGCTGGCAGTGGTCCGACAACCTGCCCCCTCAAGTACCTCAACTGGGAGAGTGACCAGCC
 GGACAACCCAGTGAGGAGAAGTGTGGAGTGATCCGCACTGAGTCTCGGGCGGTGGCAGAACCCTGAC
 TGCAGCATCGCGCTGCCCTATGTGTGCAAGAAGAAGCCCAACGCCACGGCCGAGCCACCCCTCCAGACA
 GGTGGGCCAATGTGAAGGTGGAGTGCAGCCGAGCTGGCAGCCCTCCAGGGCCACTGCTACCGCTGCA
 GGCCGAGAAGCGCAGCTGGCAGGAGTCCAAGAAGGCATGTCTGCGGGGCGGTGGCAGCTGGTCAGCATC
 CACAGCATGGCCGAGCTGGAATTCATCACCAAGCAGATCAAGCAAGAGGTGGAGGAGCTGTGGATCGGCC
 TCAACGATTTGAACTGCAGATGAATTTGAGTGGTCTGACGGGAGCCTTGTGAGCTTACCCTACTGGCA
 CCCCTTTGAGCCCAACAACCTCCGGGACAGTCTGGAGGACTGTGTACCATCTGGGGCCCGAAGGCCCG



[View online >](#)

TGGAACGACAGTCCCTGTAAACCAGTCCCTTGCCATCCATCTGCAAGAAGGCAGGCCAGCTGAGCCAGGGGG
CCGCCGAGGAGGACCATGGCTGCCGGAAGGGTTGGACGTGGCACAGGCCATCCTGCTACTGGCTGGGAGA
AGACCAAGTGACCTACAGTGAGGCCCGGCCTGTGACTGACCATGGCTCTCAGCTGGTCACCATCACC
AACAGGTTTCGAGCAGGCCTTCGTGAGCAGCCTCATCTACAACGGGAGGGCGAGTACTTCTGGACGGCC
TGCAGGACCTCAACAGCACCGGCTCCTTCTTGCTCAGTGGGGATGAAGTCATGTACACCCACTGGAA
CCGGGACCAGCCCGGGTACAGCCGTGGGGCTGCGTGGCGCTGGCCACTGGCAGCGCCATGGGGCTGTGG
GAGGTGAAGAAGTACCTCGTTCCGGGCCGCTACATCTGCCGCGAGAGCCTGGCACTCCAGTGACGC
CGGAGCTGCCGGGCCAGATCCCACGCCAGCCTCACTGGCTCCTGTCCCAGGGCTGGGCCTCGGACAC
CAAACCTCCGGTATTGCTATAAGGTGTTAGCTCAGAGCGGCTGCAGGACAAGAAGAGCTGGTCCAGGCC
CAGGGGGCTGCCAGGAGCTGGGGGCCAGCTGCTGAGCCTGGCCAGCTACGAGGAGGAGCACTTTGTGG
CCAACATGCTCAACAAGATCTTCGGTGAATCAGAACCCGAGATCCACGAGCAGCACTGGTTCTGGATCGG
CCTGAACCGTTCGGATCCAGAGGGGGTTCAGAGTTGGCGCTGGAGCGACGGCGTAGGGTTCTCTTACCAC
AATTCGACCGGAGCCGGCAGCAGCAGCAGCAGCATCCGAGGCTGTGCGGTGCTGGACCTGGCCTCCCTGC
AGTGGGTGGCCATGCAGTGCACACACAGCTGGACTGGATCTGCAAGATCCCAGAGGTACGGACGTGGC
GGAGCCCAGCAGCCCTCAAGGCCAGCGGAATGGCTGCGCTCCAGGAGGCCAGTACAAGTTCTTT
GAGCACCCTCCAGTGGGCGCAGGCGCAGCGCATCTGCAGTGGTTCAGGCCAGCTGACCTCCGTGC
ACAGCCAGGCGGAGTAGACTTCTGAGCCACAACCTGCAGAAGTTCTCCCGGGCCAGGAGCAGCACTG
GTGGATCGGCCTGCACACCTCTGAGAGCGATGGGCGCTTCAGATGGACAGATGGTTCATTATAAATTC
ATCTCCTGGGCACCAGGCAAACCTCGGCCTGTCCGCAAGGACAAGAAGTGCCTGTACATGACAGCCAGCC
GAGAGGACTGGGGGACCAGAGGTGCCTGACAGCCTTGCCTACATCTGCAAGCGCAGCAACGTACCAA
AGAAACGACGCCCCAGACCTGCCAATACAGCCCTGGGGGGTGCCTCTGACTGGATCCAGTTCTCTC
ACAAGTGTTCAGGTCAGGGCCAGGAACCCAGAGCCGGTGAAGTGGTTCAGAGGCACAGTTCTCTC
GTGAACGCAAGAGGCCAGCTGGTACCATCACAAACCCCTTAGAGCAAGCATTATCAGAGCCAGCCT
GCCAATGTGACCTTTGACCTTTGGATTGGCTCCATGCCTCGCAGAGGGAATCCAGTGGGTGGAGCAG
GAGCCTTTGATGTATGCCAACTGGGCACCTGGGGAGCCCTCTGGCCCTAGCCCTGCTCCCAGTGGCAACA
AACCGACCAGCTGTGCGGTGGTCTGCACAGCCCTCAGCCACTTCACTGGCCGCTGGGACGATCGGAG
CTGCACGGAGGAGACCCATGGCTTCATCTGCCAGAAGGGCAGGACCCCTCCCTGAGCCCGTCCCAGCA
GCGCTGCCCCCGCCCGGGCAGTGAAGTCTCTACCTCAACGGCACCTTCGGCTGCTTCAAGAGCCGC
TGCGCTGGCAGATGCCCTCTGCTGTGTGAGAGCCACAATGCCAGCCTGGCCTACGTGCCCGACCCCTA
CACCCAGGCTTCTCACGCAGGCTGCCGAGGGCTGCGCAGCCGCTCTGGATTGGGCTGGCTGGCGAG
GAGGGCTCTCGGGGACTCCTGGGTCTCAGAGGAGCCGCTGAACTACGTGGGCTGGCAGGACGGGGAGC
CGCAGCAGCCGGGGGCTGTACCTACGTAGATGTGGACGGGGCTGGCGCACCCAGCTGTGACACCAA
GCTGCAGGGGGCTGTGTGTGGGGTTAGCAGTGGGCCCCCTCTCCCCGAAGAATAAGCTACCATGGCAGC
TGTCCCAGGGACTGGCAGACTCCCGTGGATTCCCTTCGGGAGCACTGCTATTCTTTCCACATGGAGC
TGCTGCTGGGCCACAAGGAGGCGCGACAGCGCTGCCAGAGAGCGGGTGGGGCCGCTCTGTCTATCTGGA
TGAGATGGAGAATGTGTTTGTCTGGGAGCACCTGCAGAGCTATGAGGGCCAGAGTCGGGGCGCCTGGCTG
GGCATGAACTTCAACCCAAAGGAGGCACTCTGGTCTGGCAGGACAACACAGCTGTGAACTACTCCAAT
GGGGCCCCCGGGCTTGGGCCAGCATGCTGAGCCACAACAGCTGCTACTGGATTACAGGACAACAGCGG
GCTATGGCGCCCCGGCGCTTGCACCAACATCACCATGGGTGTCGCTGCAAGCTTCTCGTGTGAGCAG
AGCAGTTCTCCCATCAGCGCTTCCAGAGAACCAGCGCCCTGGTGGTGGTGTGATGGCGGTGCTGC
TGCTCCTGGCCTTGTGACCGCAGCCCTCATCCTTTACGGAGGCGCCAGAGCATCGAGCGGGGCCCTT
TGAGGGTGGCCGCTACAGCCGAGCAGCTCCAGCCCCACCGAGGCCACTGAGAAGAATCCTGGTGTCA
GACATGGAATGAATGAGCAGCAAGAA

ACGCGTACGCGGGCCGCTCGAGCAGAACTCATCTCAGAAGAGGATCTGGCAGCAATGATATCCTGGATT
ACAAGGATGACGACGATAAGGTTTAA

Protein Sequence: >RC221360 representing NM_006039
 Red=Cloning site Green=Tags(s)

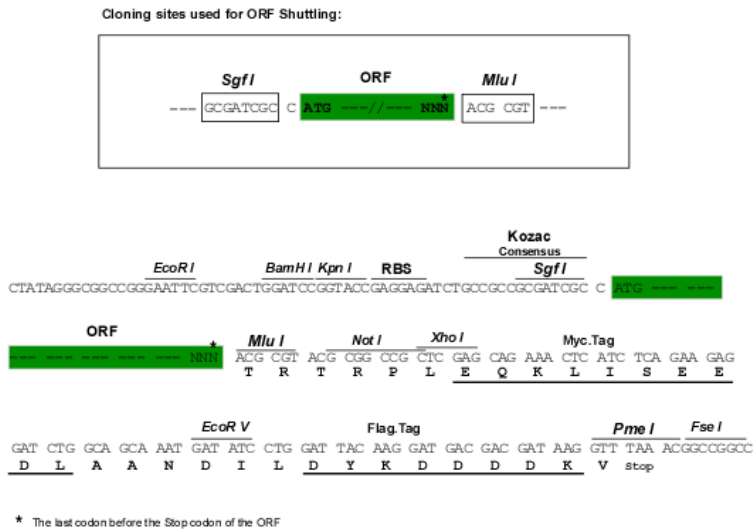
MGPGRPAPAPWRHLLRCVLLLGLHLGRPGAPGDAALPEPNVFLIFSHGLQGCLQAQGGQVRVTPACNT
 SLPAQRWKWVSRNRLFNLGTMQCLGTGWPNTTASLGMYCDREALNLRWHCRTLDGQLSLLLGARTSN
 ISKPGTLERGDQTRSGQWRIYGSSEEDLCALPYHEVYTIQGNHSHGKPTIPFKYDNQWFHGCTSTGREDGH
 LWCATTQDYGKDERWGFPIKSNDCETFWDKQDLTDSCYQFNQSTLSWREAWASCEQQGADLLSITEIH
 EQTYINGLLTGYSSTLWIGLNDLDTSGGWQWSDNSPLKYLNWESDQPDNPSEENCGVIRTESSGGWQNRD
 CSIALPYVCKKKPNATAEPTPPDRWANVKECEPSWQPFQGHYRLQAEKRSWQESKKAACL RGGDLVSI
 HSMAELEFITKQIKQEVEELWIGLNDLKLQMNFEWSDGSLVSFTHWHPFEPNNFRDSEDCVTIWGPEGR
 WNDSPCNQSLPSICKKAGQLSQAAEEDHGCRKGTWHSPSCYWLGEDQVYSEARRLCTDHGSQLVITIT
 NRFEQAFVSSLIYNWEGEYFWTALQDLNSTGSFFWL SGDEVMYTHWNRDQPGYSRGGCVLATGSAMGLW
 EVKNCTSFRRARYICRQSLGTPVTPPELPGDPPTSLTGSCPQGWASDTKLRICYKVFSSERLQDKKSWVQA
 QGACQELGAQLLSLASYEEHFVANMLNKIFGESEPEIHEQHWFIWGLNRRDRPGGQSWRWSGVGF SYH
 NFRDRSRHDDDDIRGCAVLDLQWVAMQCDTQLDWICKIPRGTDVREPDDSPQGRREWLRQAEAEYKFF
 EHHSTWAQAQRICTFWQAE LTVSHSQAELDFLSHNLQKFSRAQEQHWWI GLHTSESDGRFRWTDGSIIN
 ISWAPGKPRPVGDKKCVYMTASREDWGDQRCLTALPYICKRSNVTKETQPPDLPTTALGGCPSDWIQFL
 NKCFQVQGEPPQSRVWSEAFSCEQEAQLVITINPLEQAFITASLPNVTFDLWIGLHASQRDFQVVEQ
 EPLMYANWAPGEPSPGSPAPSGNKPTSCAVVLHSPSAHFTGRWDRSCTEETHGFIQKGTDPSPSPSPA
 ALPPAPGTEL SYLNGTFRLLQKPLRWH DALLLCE SHNASLAYVPDYPYQAF L TQAARGLRTPWIGLAGE
 EGSRRYSWVSEEP LNYVGWQDGEPPQPGGCTYVDVDGAWRTTSCDTKLQGA VCGVSSGPPPPRRISYHGS
 CPQGLADSAWIPFREHCYSFHMELLLGHKEARQRCQRAGGAVLSILDEMENVFVWEHLQSYEGQSRGAWL
 GMNFNPKGGTLVWQDNTAVNYSNWGPPGLGPSMLSHNSCYWIQNSGLWRPGACTNITMGVVCKLPRAEQ
 SSFSPSALPENPAALVVVLMVLLLLALLTAALILYRRRQSIERGA FEGARYSRSSSSPTEATEKNILV S
 D MEMNEQQE

TRTRPLEQKLISEEDLAANDILDYKDDDDKV

Chromatograms: https://cdn.origene.com/chromatograms/mk8008_d11.zip

Restriction Sites: SgfI-MluI

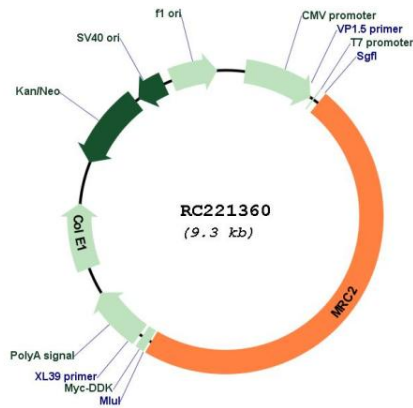
Cloning Scheme:



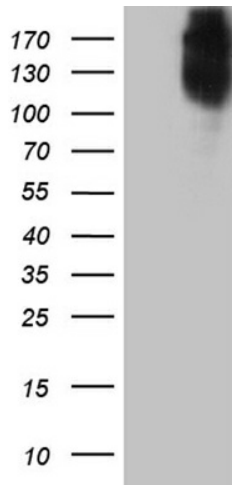
ACCN: NM_006039

ORF Size:	4437 bp
OTI Disclaimer:	<p>Due to the inherent nature of this plasmid, standard methods to replicate additional amounts of DNA in E. coli are highly likely to result in mutations and/or rearrangements. Therefore, OriGene does not guarantee the capability to replicate this plasmid DNA. Additional amounts of DNA can be purchased from OriGene with batch-specific, full-sequence verification at a reduced cost. Please contact our customer care team at custsupport@origene.com or by calling 301.340.3188 option 3 for pricing and delivery.</p> <p>The molecular sequence of this clone aligns with the gene accession number as a point of reference only. However, individual transcript sequences of the same gene can differ through naturally occurring variations (e.g. polymorphisms), each with its own valid existence. This clone is substantially in agreement with the reference, but a complete review of all prevailing variants is recommended prior to use. More info</p>
OTI Annotation:	This clone was engineered to express the complete ORF with an expression tag. Expression varies depending on the nature of the gene.
Components:	The ORF clone is ion-exchange column purified and shipped in a 2D barcoded Matrix tube containing 10ug of transfection-ready, dried plasmid DNA (reconstitute with 100 ul of water).
Reconstitution Method:	<ol style="list-style-type: none">1. Centrifuge at 5,000xg for 5min.2. Carefully open the tube and add 100ul of sterile water to dissolve the DNA.3. Close the tube and incubate for 10 minutes at room temperature.4. Briefly vortex the tube and then do a quick spin (less than 5000xg) to concentrate the liquid at the bottom.5. Store the suspended plasmid at -20°C. The DNA is stable for at least one year from date of shipping when stored at -20°C.
RefSeq:	NM_006039.2 , NP_006030.1
RefSeq Size:	4700 bp
RefSeq ORF:	4440 bp
Locus ID:	9902
UniProt ID:	Q9UBG0
Cytogenetics:	17q23.2
Protein Families:	Druggable Genome, Transmembrane
MW:	166.5 kDa
Gene Summary:	This gene encodes a member of the mannose receptor family of proteins that contain a fibronectin type II domain and multiple C-type lectin-like domains. The encoded protein plays a role in extracellular matrix remodeling by mediating the internalization and lysosomal degradation of collagen ligands. Expression of this gene may play a role in the tumorigenesis and metastasis of several malignancies including breast cancer, gliomas and metastatic bone disease. [provided by RefSeq, Feb 2012]

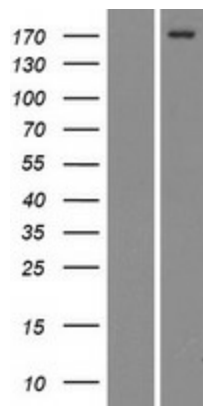
Product images:



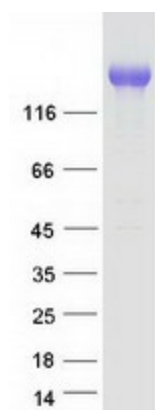
Circular map for RC221360



HEK293T cells were transfected with the pCMV6-ENTRY control (Cat# [PS100001], Left lane) or pCMV6-ENTRY MRC2 (Cat# RC221360, Right lane) cDNA for 48 hrs and lysed. Equivalent amounts of cell lysates (5 ug per lane) were separated by SDS-PAGE and immunoblotted with anti-MRC2(Cat# [TA811858]). Positive lysates [LY416912] (100ug) and [LC416912] (20ug) can be purchased separately from OriGene.



Western blot validation of overexpression lysate (Cat# [LY416912]) using anti-DDK antibody (Cat# [TA50011-100]). Left: Cell lysates from untransfected HEK293T cells; Right: Cell lysates from HEK293T cells transfected with RC221360 using transfection reagent MegaTran 2.0 (Cat# [TT210002]).



Coomassie blue staining of purified MRC2 protein (Cat# [TP321360]). The protein was produced from HEK293T cells transfected with MRC2 cDNA clone (Cat# RC221360) using MegaTran 2.0 (Cat# [TT210002]).