

## Product datasheet for RC221352

### TAS2R42 (NM\_181429) Human Tagged ORF Clone

#### Product data:

Product Type:	Expression Plasmids
Product Name:	TAS2R42 (NM_181429) Human Tagged ORF Clone
Tag:	Myc-DDK
Symbol:	TAS2R42
Synonyms:	T2R24; T2R42; T2R55; TAS2R55
Mammalian Cell Selection:	Neomycin
Vector:	pCMV6-Entry (PS100001)
E. coli Selection:	Kanamycin (25 ug/mL)
ORF Nucleotide Sequence:	>RC221352 ORF sequence Red=Cloning site Blue=ORF Green=Tags(s)

TTTTGTAATACGACTCACTATAGGGCGGCCGGAATTCGTCGACTGGATCCGGTACCGAGGAGATCTGCC  
GCC**CGGATCGCC**

ATGGCCACCGAATTGGACAAAATCTTTCTGATTCTGGCAATAGCAGAATTCATCATCAGCATGCTGGGGA  
ATGTGTTTCATTGGACTGGTAACTGCTCTGAAGGGATCAAGAACCAAAGGTCTTCTCAGCTGACTTCAT  
CCTCACCTGCTTGGCTATCTCCACAATTGGACAACTGTTGGTGACTGTTTGATTTCATTCTAGTGGGA  
CTTGCTTCACATTTATATACCACATATAGACTAGGAAAACTGTTATTATGCTTTGGCACATGACTAATC  
ACTTGACAACCTGGCTTGGCACCTGCCTAAGCATTCTTTCTATTTCTTTAAGATAGCCCACTCCCCACTC  
CCTTTTCTCTGGCTGAGGTGGAGGATGAACGGAATGATTGTTATGCTTCTTATATTGTCTTTGTTCTTA  
CTGATTTTTGACAGTTTAGTGCTAGAAATATTTATTGATATCTCACTCAATATAATAGATAAAAAGTAATC  
TGACTTTATATTTAGATGAAAGTAAAACCTCTATGATAAACTCTCTATTTTAAAACTCTTCTCAGCTT  
AACCAGTTTTATCCCCTTTCTCTGTTCTGACCTCCTTGCTTTTTTTATTTCTGCTTGGTGAGACAT  
ACTAGAAATTTGAAGCTCAGTTCCTTGGGCTCTAGAGACTCCAGCACAGAGGCCCATAGGAGGGCCATGA  
AAATGGTGATGTCTTTCTTTCTCTCATAGTTCATTTTTTTCTTACAAGTGGCCAATGGGATATT  
TTTTATGTTGTGGAACAACAAGTACATAAAGTTTGTGATGTTAGCCTTAAATGCCTTTCCCTCGTGCCAC  
TCATTTATTCTCATTCTGGGAAACAGCAAGCTGCGACAGACAGCTGTGAGGCTACTGTGGCATCTTAGGA  
ACTATACAAAAACCAAATGCTTTACCTTTG

**ACGCGT**ACGCGGCCGCTCGAGCAGAAAACCTCATCTCAGAAGAGGATCTGGCAGCAAATGATATCCTGGATT  
ACAAGGATGACGACGATAAGGTTTAA



[View online »](#)

**Protein Sequence:** >RC221352 protein sequence  
Red=Cloning site Green=Tags(s)

MATELDKIFLILAI AEFII SMLGNVFIGLVNCS EGIKNQKVF SADFILTCLAISTIGQLLVILFDSFLVG  
 LASHLYTTYRLGKTVIMLWHMTNHLTTWLATCLSI FYFFKIAHFP HSLFLWLRWRMNGMI VMLLILSLFL  
 LIFDSL VLEIFIDISLNIIDKSNL TLYLDESKTLYDKLSILKTLLSLTSFIPFSLFLT SLLFLFLSLVRH  
 TRNLKLSL GSRDSSTE AHRRAMKMVMSFLFLFIVHFFSLQVANGIFFMLWNNKYIKFVMLALNAFP SCH  
 SFILILGNSKLRQTAVRLLWHLRNYTKTPNALPL

TRTRPLEQKLISEEDLAANDILDYKDDDDKV

**Chromatograms:** [https://cdn.origene.com/chromatograms/mk6440\\_d09.zip](https://cdn.origene.com/chromatograms/mk6440_d09.zip)

**Restriction Sites:** SgfI-MluI

**Cloning Scheme:**



**ACCN:** NM\_181429

**ORF Size:** 942 bp

**OTI Disclaimer:** The molecular sequence of this clone aligns with the gene accession number as a point of reference only. However, individual transcript sequences of the same gene can differ through naturally occurring variations (e.g. polymorphisms), each with its own valid existence. This clone is substantially in agreement with the reference, but a complete review of all prevailing variants is recommended prior to use. [More info](#)

**OTI Annotation:** This clone was engineered to express the complete ORF with an expression tag. Expression varies depending on the nature of the gene.

**Components:** The ORF clone is ion-exchange column purified and shipped in a 2D barcoded Matrix tube containing 10ug of transfection-ready, dried plasmid DNA (reconstitute with 100 ul of water).

**Reconstitution Method:**

1. Centrifuge at 5,000xg for 5min.
2. Carefully open the tube and add 100ul of sterile water to dissolve the DNA.
3. Close the tube and incubate for 10 minutes at room temperature.
4. Briefly vortex the tube and then do a quick spin (less than 5000xg) to concentrate the liquid at the bottom.
5. Store the suspended plasmid at -20°C. The DNA is stable for at least one year from date of shipping when stored at -20°C.

**RefSeq:** [NM\\_181429.1](#), [NP\\_852094.1](#)

**RefSeq Size:** 945 bp

**RefSeq ORF:** 945 bp

**Locus ID:** 353164

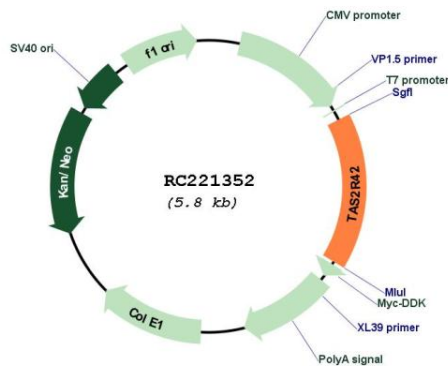
**Cytogenetics:** 12p13.2

**Protein Families:** Transmembrane

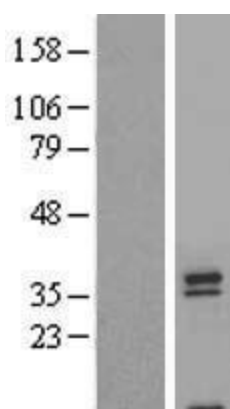
**Protein Pathways:** Taste transduction

**MW:** 36.2 kDa

**Product images:**



Circular map for RC221352



Western blot validation of overexpression lysate (Cat# [LY405755]) using anti-DDK antibody (Cat# [TA50011-100]). Left: Cell lysates from untransfected HEK293T cells; Right: Cell lysates from HEK293T cells transfected with RC221352 using transfection reagent MegaTran 2.0 (Cat# [TT210002]).