

Product datasheet for RC221350

WHSC1 (NM_133330) Human Tagged ORF Clone

Product data:

Product Type:	Expression Plasmids
Product Name:	WHSC1 (NM_133330) Human Tagged ORF Clone
Tag:	Myc-DDK
Symbol:	WHSC1
Synonyms:	KMT3F; KMT3G; MMSET; REIIBP; TRX5; WHS; WHSC1
Mammalian Cell Selection:	Neomycin
Vector:	pCMV6-Entry (PS100001)
E. coli Selection:	Kanamycin (25 ug/mL)
ORF Nucleotide Sequence:	>RC221350 representing NM_133330 Red=Cloning site Blue=ORF Green=Tags(s)

TTTTGTAATACGACTCACTATAGGGCGGCCGGAATTCGTCGACTGGATCCGGTACCGAGGAGATCTGCCGCCGCGATCGCC

ATGGAATTTAGCATCAAGCAGAGTCCCCTTTCTGTTCTGAGTGTGTAAAGTGCATAAAGATGAAGCAGG
CACCAGAAATCCTCGGCAGTGCCAACGGGAAGACTCCGAGCTGCGAGGTGAACCGCAGTGTCTGTGTT
CCTCAGCAAAGCCAGCTCTCCAGTAGCCTGCAGGAGGGGTGCAGAAAGTTAACGGCCACGACGCC
CTGCCCTTATTCCAGCCGACAAGCTGAAAGATCTTACTCCCGGTGTTAATGGAGAACCCGGCGCAC
ACGATGCCAAACTGCGTTTTGAGTCCCAGGAAATGAAAGGATTGGACACCCCTAACACTACCCCTAT
CAAAAATGGCTCTCCAGAAATTAAGCTGAAAATACCAAAACATACATGAATGGGAAGCCTCTTTGAA
TCTTCCATTTGTGGTGACAGTGCTGATGTGTCTCAGTCAGAAGAAAATGGACAAAACCCAGAAAACA
AGGCGAGAAGGAACAGGAAGAGGAGCATAAAAATGACTCCTTGCTGGAGCAGGGCCTTGTCGAAGCAGC
TCTTGTGTCTAAGATCTCAAGTCCTTCAGATAAAAAGATTCCAGCTAAGAAAGAGTCTTGTCAAACACT
GGAAGAGACAAAGACCACCTGTTGAAATACAACGTTGGTGATTTGGTGTGGTCCAAAGTGTGGGTTACC
CTTGGTGGCCTTGATGGTTTCTGCAGATCCACTCCTTCACAGCTATACCAAACTTAAAGGTCAGAAAA
GAGTGCACGCCAGTATCACGTACAGTCTTTGGTGACGCCCCAGAAAGAGCTTGGATATTTGAGAAGAGC
CTCGTAGCTTTTGAAGGAGAAGGACAGTTTAAAAATTATGCCAGGAAAGTGCCAAGCAGGCCACCCACGA
AAGCTGAGAAAAATTAAGCTATTGAAACCAATTCAGGAAATGAGGGCCAGTGGGAAATGGGCATTGT
TCAAGCAGAAGAAGCTGCAAGCATGTGAGTGGAGGAGCGGAAAGCCAAGTTCACCTTTCTCTATGTGGG
GACCAGCTTCTCAACCCTCAAGTAGCCAAGGAGGCTGGCATTGCTGCAGAGTCTTTGGGAGAAATGG
CAGAATCCTCAGGAGTCAAGTGAAGAAGCTGCTGAAAACCCCAAGTCTGTGAGAGAAGAGTGCATTCCCAT
GAAGAGAAGGCGGAGGGCCAACTGTGTAGCTCTGCAGAGACCTGGAGAGTACCCCGACATAGGGAAG
AGTACTCTCAAAGACGGCAGAGGCTGACCCAGAAAGAGGAGTAGGGTCTCTCTCTGGGAGGAAGAAGA
CCACAGTCTCCATGCCACGAAGCAGGAAGGAGATGCAGCATCCAGTTTTTGGTCTTCTGTCAAAAACA
CAGGGATGAGGTGTAGCTGAGCACCCAGATGCTTCAGGTGAGGAGATTGAAGAGCTGCTCAGGTACAG



[View online »](#)

TGGAGTCTGCTGAGTGAGAAGCAGAGAGCACGCTACAACACCAAGTTTGCCTGGTGGCCCTGTCCAGG
CTGAAGAAGACTCTGGTAAATGTAATGGGAAAAAAGAAACCACACAAAGAGGATACAGGACCCTACAGA
AGATGCTGAAGCTGAGGACACACCCAGGAAAAGACTCAGGACGGACAAGCACAGTCTTCGGAAAGAGAGAC
ACAATCACTGACAAAACGGCCAGAACAAGCTCTTACAAGGCCATGGAGGCAGCCTCCTCGCTCAAGAGCC
AGGCAGCAACGAAAAATCTGTCTGATGCATGTAACCCTGAAGAAGCGAAATCGGGCTCCACGGCAGC
ATCTTCAGCTCTTGGGTTTAGCAAAAGTTCATCTCCTTCTGCATCCTTAACTGAGAATGAGGTCTCGGAC
AGCCCCGGAGACGAGCCCTCGGAGTCCCCATACGAAAGTGCAGACGAAACACAACTGAAGTATCTGTCT
CATCCAAAAAGTCTGAGCGAGGAGTGA CTGCCAAAAAGGAGTATGTGTGCCAGCTGTGTGAGAAGCCGGG
CAGCCTCCTGCTCTGTGAAGGACCTGTGCGGAGCTTCCACCTCGCCTGCCTGGGCTTCCCGGAGG
CCAGAAGGGAGGTTACCTGCAGCGAGTGTGCCTCAGGGATTCACTCATGTTTCGTGTGTAAGAGAGCA
AGACAGATGTTAAGCGCTGTGTGTTAACTCAGTGTGGAAAATTTTACCATGAGGCTTGTGTGAAAAATA
CCCTCTGACTGTATTTGAGAGCCGAGGTTCCGCTGCCCCCTCCACAGCTGTGTGAGCTGCCATGCTTCC
AACCTTCAAACCAAGGCCGTCAAAGGTAATAATGATGCGGTGTGTCCGCTGCCCGTTGCCTATCACA
GCGGGGATGCTTGTCTGGCAGCAGGATGCTCAGTATCGCCTCCAACAGCATCATCTGCACTGCCACTT
CACTGCTCGGAAGGGGAAGCGACACCACGCCACGTCAACGTGAGCTGGTCTTCGTGTGTCTCAAAGGG
GGGAGCCTTCTGTGCTGTGAGTCTGCCAGCGGCCTTCCACCCTGACTGCCTGAACATCGAGATGCCTG
ACGGCAGCTGGTCTGCAATGACTGCAGGGCTGGGAAGAAGCTGCACTTCCAGGATATCATTGGGTGAA
ACTTGGGAACTACAGATGGTGGCCGGCAGAAGTTTGCATCCAAAAATGTTCCCCCAAATATTCAGAAA
ATGAAGCACGAGATTGGAGAATTCCTGTGTTTTCTTTGGGTCTAAAGATTATTACTGGACGCATCAGG
CGCGAGTGTCCCGTACATGGAGGGGACCAGGGCAGCCGCTACCAGGGGGTCAAGGGATCGGAAGAGT
CTTCAAAAACGCACTGCAAGAAGCTGAAGCTCGTTTTCTGTGAAATTAAGCTTCAGAGGGAAGCCCGAAA
ACACAGGAGAGCGAGCGCAAGCCCCACCATAACAAGCACATCAAGGTGAATAAGCCTTACGGGAAAGTCC
AGATCTACACAGCGGATATTTAGAAAATCCCTAAGTGAAGTCAAGCCACAGATGAGAATCCTTGTGG
CTTTGATTCGGAGTGTCTGAACAGGATGCTGATGTTTGTGAGTGCCACCCGAGGTGTGTCCCGGGCGGAG
TTCTGCCAGAACCAGTGCTTACCAAGCGCCAGTACCCAGAGACCAAGATCATCAAGACAGATGGCAAAG
GGTGGGGCTGTGTCGAAGAGGACATCAGAAAAGGAGAATTTGTTAACGAGTACGTTGGGGAGCTGAT
CGACGAGGAGGAGTGCATGGCGAGAATCAAGCACGCACAGAGAACGACATCACCCACTTCTACATGCTC
ACTATAGACAAGGACCGTATAATAGACGCTGGCCCCAAAGGAACTACTCTCGATTTATGAATCACAGCT
GCCAGCCCACTGTGAGACCCTCAAGTGGACAGTGAATGGGGACACTCGTGTGGCCTGTTTCCGCTCTG
TGACATTCCTGCAGGGACGGAGCTGACTTTTAACTACAACCTCGATTGTCTGGGCAATGAAAAACGGTC
TGCCGGTGTGGAGCCTCAATTGCAGTGGATTCTCGGGATAGACCAAAGACCTCGACGACCCTTTCAT
CAGAGGAAAAGGGCAAAAAGACCAAGAAGAAAACGAGGCGCGCAGAGCAAAAAGGGGAAGGGAAGGGCA
GTCAGAGGACGAGTGCTTCCGCTGCGGTGATGGCGGGCAGCTGGTGTGTGTGACCGCAAGTTCTGCACC
AAGGCCTACCACCTGTCTGCTGGGCCTTGGCAAGCGGCCCTTCCGGAAAGTGGGAATGTCTTGGCATC
ATTGTGACGTGTGTGGCAAACCTTCGACTTCATTTTGCACCTCTGCCCAATTCGTTCTGTAAGGAGCA
CCAGGACGGGACAGCCTTCAGCTGCACCCCGGACGGGCGGTCTACTGCTGTGAGCATGACTTAGGGGCG
GCATCGGTGAGAAGCACAAGACTGAGAAGCCCCCCCCAGAGCCAGGGAAGCCGAAGGGGAAGAGGGCGG
GGCGGAGGGCTGGCGGAGATCACAGAGGGCAA

ACGCGTACGCGGCGCTCGAGCAGAACTCATCTCAGAAGAGGATCTGGCAGCAAATGATATCCTGGATT
ACAAGGATGACGACGATAAGGTTTAA

Protein Sequence: >RC221350 representing NM_133330
Red=Cloning site Green=Tags(s)

```
MEFSIKQSPLSVQSVVKCIKMKQAPEILGSANGKTPSCEVNRECSVFLSKAQLSSSLQEGVMQKFNHDA
LPFIPADKLKDLTSRVFNGEPGAHDAKLRFESQEMKGIGTPPNTTPIKNGSPEIKLKITKTYMNGKPLFE
SSICGDSAADVSOSEENGQKPENKARRNRKRSIKYDSLLEQGLVEALVSKISSPSDKKIPAKKESCPT
GRDKDHLLKYNVGDLVWSKVSQYVWPCMVSAADPLLHSHYTKLKGQKKSARQYHVQFFGDAPERAWIFEKS
LVAFEGEQFELKQESAKQAPTKAEKIKLLKPI SGKLRQWEMGIVQAEAAASMSVEERKAKFTFLYVG
DQLHLNPQVAKEAGIAAESLGEMAESSGVSEAAENPKSVREECIPMKRRRRRAKLCSSAETLESHPDIGK
STPQKTAEADPRRGVGSPPGRKKT TVSMR SRKGDAA SQFLVFCQKHRDEVVAEHPDASGEEIEELLRSQ
WSLLSEKQRARYNTK FALVAPVQAEEDSGNVNGKKNHTKRIQDPTEDAEADTPRKLRLTDKHSRLRKR
D TITDKTARTSSYKAMEAASSLSQAATKNLSDACKPLKKNRASTAASSALGFSKSSPSASLTENEVSD
SPGDEPSESPYESADETQTEVSVSSKSERGVTAKKEYVCQLCEKPGSLLLCEGPCCGAFHLACLGLSRR
PEGRFTCECASGIHSCFVCKESKTDVKRCVVTQCGKFYHEACVKKYPLTVFESRGRFRCPLHSCVSHAS
NPSNPRPSKGMRCVRCVAYHSGDACLAAGCSVIASNSI ICTAHFTARKGKRHHAHVNVSWFCVCSKG
GSLCCESCSPA AFHPDCLNIEMPDGSWFCNDCRAGKLFHQDI IWVKLGNYRWWPAEVCHPKNVPPNIQK
MKHEIGEFVFFFGSKDYWTHQARVFPYMEGDRGSRYQGVIRGIRVFKNALQEAARFREIKLQREARE
TQESERKPPPYKHIVKPYGKVIYTADISEIPKCNCKPTDENPCGFDSECLNRMLMFECHPQVCPAGE
FCQNQCFTRQYPETKI IKTDGKGWGLVAKRDIRKGEFVNEYVELIDEEECMARIKHAHENDITHFYML
TIDKDIRIDAGPKGNYSRFMNHSCQPN CETLKWTVNGDTRVGLFAVCDIPAGTELTFNYNLDCLGNEKTV
CRCGASNC SGFLGDRPKTSTL SSEEK GKTKKTRRRRAKGEGRQSEDECFCRGGDGLVLCDRKFC
T KAYHL SCLGLGRPF GKWECPWHHCDVCGK PSTSFCHLCPNSFCKEHQDGTAF SCTPDGRSYCCEHDLGA
ASVRSTKTEKPPPEPGPKPKGRRRRRRGWRRRVTEGK
```

TRTRPLEQKLISEEDLAANDILDYKDDDDKV

Restriction Sites:

SgfI-MluI

Cloning Scheme:



ACCN: NM_133330

ORF Size: 4095 bp

OTI Disclaimer: Due to the inherent nature of this plasmid, standard methods to replicate additional amounts of DNA in E. coli are highly likely to result in mutations and/or rearrangements. Therefore, OriGene does not guarantee the capability to replicate this plasmid DNA. Additional amounts of DNA can be purchased from OriGene with batch-specific, full-sequence verification at a reduced cost. Please contact our customer care team at custsupport@origene.com or by calling 301.340.3188 option 3 for pricing and delivery.

The molecular sequence of this clone aligns with the gene accession number as a point of reference only. However, individual transcript sequences of the same gene can differ through naturally occurring variations (e.g. polymorphisms), each with its own valid existence. This clone is substantially in agreement with the reference, but a complete review of all prevailing variants is recommended prior to use. [More info](#)

OTI Annotation: This clone was engineered to express the complete ORF with an expression tag. Expression varies depending on the nature of the gene.

Components: The ORF clone is ion-exchange column purified and shipped in a 2D barcoded Matrix tube containing 10ug of transfection-ready, dried plasmid DNA (reconstitute with 100 ul of water).

Reconstitution Method:

1. Centrifuge at 5,000xg for 5min.
2. Carefully open the tube and add 100ul of sterile water to dissolve the DNA.
3. Close the tube and incubate for 10 minutes at room temperature.
4. Briefly vortex the tube and then do a quick spin (less than 5000xg) to concentrate the liquid at the bottom.
5. Store the suspended plasmid at -20°C. The DNA is stable for at least one year from date of shipping when stored at -20°C.

RefSeq: [NM_133330.2](#)

RefSeq Size: 7886 bp

RefSeq ORF: 4098 bp

Locus ID: 7468

UniProt ID: [O96028](#)

Cytogenetics: 4p16.3

Domains: PWWP, HMG, SET, PHD, PostSET, AWS

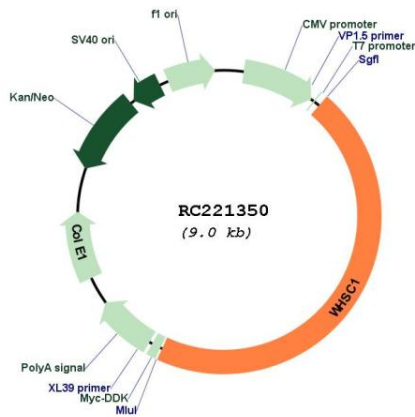
Protein Families: Druggable Genome, Transcription Factors

Protein Pathways: Lysine degradation

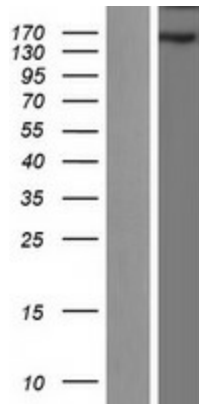
MW: 152.1 kDa

Gene Summary:

This gene encodes a protein that contains four domains present in other developmental proteins: a PWWP domain, an HMG box, a SET domain, and a PHD-type zinc finger. It is expressed ubiquitously in early development. Wolf-Hirschhorn syndrome (WHS) is a malformation syndrome associated with a hemizygous deletion of the distal short arm of chromosome 4. This gene maps to the 165 kb WHS critical region and has also been involved in the chromosomal translocation t(4;14)(p16.3;q32.3) in multiple myelomas. Alternative splicing of this gene results in multiple transcript variants encoding different isoforms. Some transcript variants are nonsense-mediated mRNA (NMD) decay candidates, hence not represented as reference sequences. [provided by RefSeq, Jul 2008]

Product images:


Circular map for RC221350



Western blot validation of overexpression lysate (Cat# [LY408869]) using anti-DDK antibody (Cat# [TA50011-100]). Left: Cell lysates from untransfected HEK293T cells; Right: Cell lysates from HEK293T cells transfected with RC221350 using transfection reagent MegaTran 2.0 (Cat# [TT210002]).