

Product datasheet for **RC221347**

BCL2L12 (NM_138639) Human Tagged ORF Clone

Product data:

Product Type:	Expression Plasmids
Product Name:	BCL2L12 (NM_138639) Human Tagged ORF Clone
Tag:	Myc-DDK
Symbol:	BCL2L12
Mammalian Cell Selection:	Neomycin
Vector:	pCMV6-Entry (PS100001)
E. coli Selection:	Kanamycin (25 ug/mL)
ORF Nucleotide Sequence:	>RC221347 representing NM_138639 Red=Cloning site Blue=ORF Green=Tags(s)

TTTTGTAATACGACTCACTATAGGGCGGCCGGAATTCGTCGACTGGATCCGGTACCGAGGAGATCTGCC
GCC**CGATCGCC**

ATGGGACGGCCCGCTGGGCTGTTCCCGCCCTATGCCCTTTTTGGGTTCCGGCCAGAGGCATGCTGGG
AGCGTCACATGCAAATTGAGCGTGCACCCAGCGTTCGCCCTTTCTACGCTGGGCCGTTATCGACCCGG
CCCAGTGCAGGCGCGGGAAAGTTGAACTAATAAAGTTGTACGAGTTCAGTGGAGGAGACCGCAAGTT
GAGTGGAGGAGGCGCGGTGGGGCCCGGACCAGGTGCCTCCATGGCAGGCTCGAAGAGCTGGGGCTCC
GGGAAGACACGCTGAGGGTCTAGCTGCCTTCTTAGGCGTGGTGGAGCTGCCGGTCTCCTGTTCCAAC
TCCACCTAGAAGCCTGCCAAGAAGAGCCAACAGACTTCCTGAGCCGCCTTCAAGATGTCTTCCCTGC
TCCCTGGGGCGAGGAGCAGCCCCCTCTGAGTCCCCTCGGCCTTGCTCTCTGCCATCCGCCCTGTATG
GTTTAGAGCTGGCCAGCTACTCCAGACTTCTATGCTTTGGTGGCCAGCGGCTGGAACAGCTGGTCCA
AGAGCAGCTGAAATCTCCGCCAGCCAGAAATTACAGGGTCCCCATCGACAGAGAAGGAAGCCATACTG
CGGAGGCTGGTGGCCCTGCTGGAGGAGGAGGCAGAAGTCATTAACCAGAAGCTGGCCTCGGACCCCGCC
TGCGCAGCAAGCTGGTCCGCTGTCTCCGACTTTTCGCCCGCCTGGTGGAGCTGTTCTGTAGCCGGGA
TGACAGCTCTGCCCAAGCCGAGCATGCCCGGGCCCCCGCTCCTTCCCGGAGCCCTGGCCCGCTG
GCCCTAGCCATGGAGCTGAGCCGGCGCTGGCCGGGCTGGGGGCACCCTGGCCGACTCAGCGTGGAGC
ACGTGCACAGCTTACGCCCTGGATCCAGGCCACGGGGCTGGGAGGGCATCCTGGCTGTTTACCCGT
GGAATTGAACTGCCATTGGAC

ACGCGTACGCGGCCGCTCGAGCAGAACTCATCTCAGAAGAGGATCTGGCAGCAAATGATATCCTGGATT
ACAAGGATGACGACGATAAGGTTTAA



[View online >](#)

Protein Sequence: >RC221347 representing NM_138639
Red=Cloning site Green=Tags(s)

MGRPAGLFPPLCPFLGFRPEACWERHMQIERAPSVPPFLRWAGYRPGPVRRRGKVELIKFVRVQWRRPQV
 EWRRRRWGPGGASMGSEELGLREDTLRVLAFLRRGEAAGSPVPTPPRSPAQEPTDFLSRLRCLPC
 SLGRGAAPSESPRPCSLPIRPCYGLEPGPATPDFYALVAQRLEQLVQEQLKSPSPPELQGGPPSTEKEAIL
 RRLVALLEEEAEVINQKLASDPALRSKLVRLSSDSFARLVELFCSRDDSSRPSRACPGPPPPSPEPLARL
 ALAMELSRRVAGLGGTLAGLSVEHVHSFTPWIIQAHGGWEGILAVSPVDLNLPLD

TRTRPLEQKLISEEDLAANDILDYKDDDDKV

Chromatograms: https://cdn.origene.com/chromatograms/mk6116_b02.zip

Restriction Sites: Sgfl-MluI

Cloning Scheme:

Cloning sites used for ORF Shuttling:



* The last codon before the Stop codon of the ORF

ACCN: NM_138639

ORF Size: 1002 bp

OTI Disclaimer: The molecular sequence of this clone aligns with the gene accession number as a point of reference only. However, individual transcript sequences of the same gene can differ through naturally occurring variations (e.g. polymorphisms), each with its own valid existence. This clone is substantially in agreement with the reference, but a complete review of all prevailing variants is recommended prior to use. [More info](#)

OTI Annotation: This clone was engineered to express the complete ORF with an expression tag. Expression varies depending on the nature of the gene.

Components: The ORF clone is ion-exchange column purified and shipped in a 2D barcoded Matrix tube containing 10ug of transfection-ready, dried plasmid DNA (reconstitute with 100 ul of water).

Reconstitution Method:

1. Centrifuge at 5,000xg for 5min.
2. Carefully open the tube and add 100ul of sterile water to dissolve the DNA.
3. Close the tube and incubate for 10 minutes at room temperature.
4. Briefly vortex the tube and then do a quick spin (less than 5000xg) to concentrate the liquid at the bottom.
5. Store the suspended plasmid at -20°C. The DNA is stable for at least one year from date of shipping when stored at -20°C.

RefSeq: [NM_138639.1](#), [NP_619580.1](#)

RefSeq Size: 1893 bp

RefSeq ORF: 753 bp

Locus ID: 83596

UniProt ID: [Q9HB09](#)

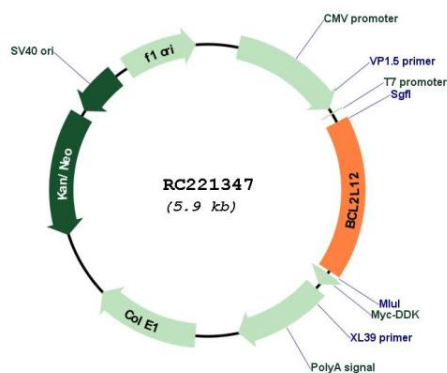
Cytogenetics: 19q13.33

Protein Families: Druggable Genome

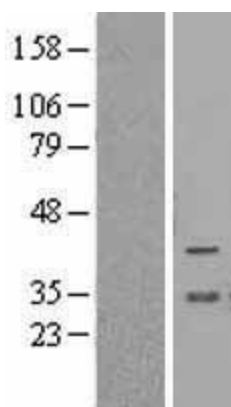
MW: 36.6 kDa

Gene Summary: This gene encodes a member of a family of proteins containing a Bcl-2 homology domain 2 (BH2). The encoded protein is an anti-apoptotic factor that acts as an inhibitor of caspases 3 and 7 in the cytoplasm. In the nucleus, it binds to the p53 tumor suppressor protein, preventing its association with target genes. Overexpression of this gene has been detected in a number of different cancers. There is a pseudogene for this gene on chromosome 3. Alternative splicing results in multiple transcript variants. [provided by RefSeq, Sep 2013]

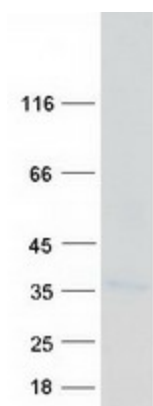
Product images:



Circular map for RC221347



Western blot validation of overexpression lysate (Cat# [LY403365]) using anti-DDK antibody (Cat# [TA50011-100]). Left: Cell lysates from untransfected HEK293T cells; Right: Cell lysates from HEK293T cells transfected with RC221347 using transfection reagent MegaTran 2.0 (Cat# [TT210002]).



Coomassie blue staining of purified BCL2L12 protein (Cat# [TP321347]). The protein was produced from HEK293T cells transfected with BCL2L12 cDNA clone (Cat# RC221347) using MegaTran 2.0 (Cat# [TT210002]).