

Product datasheet for RC221340

EMA (MUC1) (NM_002456) Human Tagged ORF Clone

Product data:

Product Type:	Expression Plasmids
Product Name:	EMA (MUC1) (NM_002456) Human Tagged ORF Clone
Tag:	Myc-DDK
Symbol:	EMA
Synonyms:	ADMCKD; ADMCKD1; ADTKD2; CA 15-3; CD227; EMA; H23AG; KL-6; MAM6; MCD; MCKD; MCKD1; MUC-1; MUC-1/SEC; MUC-1/X; MUC1/ZD; PEM; PEMT; PUM
Mammalian Cell Selection:	Neomycin
Vector:	pCMV6-Entry (PS100001)
E. coli Selection:	Kanamycin (25 ug/mL)
ORF Nucleotide Sequence:	>RC221340 representing NM_002456 Red=Cloning site Blue=ORF Green=Tags(s)

TTTTGTAATACGACTCACTATAGGGCGGCCGGAATTCGTCGACTGGATCCGGTACCGAGGAGATCTGCC
GCCGCGATCGCC

ATGACACCGGGCACCCAGTCTCCTTTCTTCTGCTGCTGCTCCTCACAGTGCTTACAGTTGTTACAGGTT
CTGGTCATGCAAGCTCTACCCAGGTGGAGAAAAGGAGACTTCGGCTACCCAGAGAAGTTCAGTGCCAG
CTCTACTGAGAAGAATGCTTTGTCTACTGGGTCTCTTTCTTTTCTGTCTTTTACATTTCAAACCTC
CAGTTTAAATTCCTCTCTGGAAGATCCCAGCACCGACTACTACCAAGAGCTGCAGAGAGACATTTCTGAAA
TGTTTTGCGAGATTTATAACAAGGGGTTTTCTGGCCTCTCCAATATTAAGTTCAGGCCAGGATCTGT
GGTGGTACAATTGACTCTGGCCTCCGAGAAGGTACCATCAATGTCCACGACGTGGAGACACAGTTCAAT
CAGTATAAACGGAAGCAGCCTCTCGATATAACCTGACGATCTCAGACGTCAGCGTGAGTGATGTGCCAT
TTCTTTCTCTGCCAGTCTGGGCTGGGTGCCAGGCTGGGCATCGCGCTGCTGGTGTGCTGTGT
TCTGGTTGCGCTGGCCATTGTCTATCTATTGCCCTGGCTGTCTGTGAGTCCGCCGAAAGAACTACGGG
CAGCTGGACATCTTTCCAGCCCGGATACCTACCATCCTATGAGCGAGTACCCACCTACCACCCCATG
GGCGCTATGTGCCCCCTAGCAGTACCGATCGTAGCCCTATGAGAAGGTTTCTGCAGGTAATGGTGGCAG
CAGCCTCTTTACACAAACCCAGCAGTGGCAGCCACTTCTGCCAATTG

ACGCGTACGCGGGCGCTCGAGCAGAACTCATCTCAGAAGAGGATCTGGCAGCAATGATATCTGGATT
ACAAGGATGACGACGATAAGGTTTAA



[View online »](#)

Reconstitution Method:

1. Centrifuge at 5,000xg for 5min.
2. Carefully open the tube and add 100ul of sterile water to dissolve the DNA.
3. Close the tube and incubate for 10 minutes at room temperature.
4. Briefly vortex the tube and then do a quick spin (less than 5000xg) to concentrate the liquid at the bottom.
5. Store the suspended plasmid at -20°C. The DNA is stable for at least one year from date of shipping when stored at -20°C.

Note: Plasmids are not sterile. For experiments where strict sterility is required, filtration with 0.22um filter is required.

RefSeq: [NM_002456.6](#)

RefSeq Size: 1209 bp

RefSeq ORF: 822 bp

Locus ID: 4582

UniProt ID: [P15941](#)

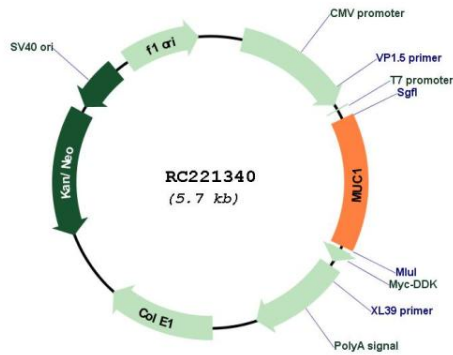
Cytogenetics: 1q22

Protein Families: Druggable Genome, Secreted Protein, Transmembrane

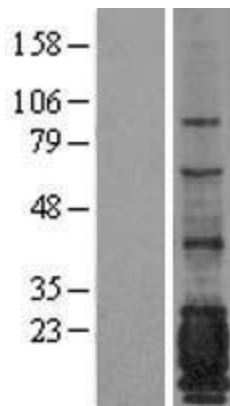
MW: 29.59 kDa

Gene Summary: This gene encodes a membrane-bound protein that is a member of the mucin family. Mucins are O-glycosylated proteins that play an essential role in forming protective mucous barriers on epithelial surfaces. These proteins also play a role in intracellular signaling. This protein is expressed on the apical surface of epithelial cells that line the mucosal surfaces of many different tissues including lung, breast stomach and pancreas. This protein is proteolytically cleaved into alpha and beta subunits that form a heterodimeric complex. The N-terminal alpha subunit functions in cell-adhesion and the C-terminal beta subunit is involved in cell signaling. Overexpression, aberrant intracellular localization, and changes in glycosylation of this protein have been associated with carcinomas. This gene is known to contain a highly polymorphic variable number tandem repeats (VNTR) domain. Alternate splicing results in multiple transcript variants.[provided by RefSeq, Feb 2011]

Product images:



Circular map for RC221340



Western blot validation of overexpression lysate (Cat# [LY400880]) using anti-DDK antibody (Cat# [TA50011-100]). Left: Cell lysates from untransfected HEK293T cells; Right: Cell lysates from HEK293T cells transfected with RC221340 using transfection reagent MegaTran 2.0 (Cat# [TT210002]).