

Product datasheet for **RC221336**

GTDC1 (NM_001006636) Human Tagged ORF Clone

Product data:

Product Type:	Expression Plasmids
Product Name:	GTDC1 (NM_001006636) Human Tagged ORF Clone
Tag:	Myc-DDK
Symbol:	GTDC1
Synonyms:	Hmat-Xa; mat-Xa
Mammalian Cell Selection:	Neomycin
Vector:	pCMV6-Entry (PS100001)
E. coli Selection:	Kanamycin (25 ug/mL)



[View online »](#)

ORF Nucleotide Sequence:

>RC221336 representing NM_001006636
 Red=Cloning site Blue=ORF Green=Tags(s)

TTTTGTAATACGACTCACTATAGGGCGGCCGGGAATTCGTCGACTGGATCCGGTACCGAGGAGATCTGCC
 GCC**CGGATCGCC**

ATGAGTATCCTCATCATTGAAGCATTCTATGGAGGCTCCATAAACAGCTGGTGGATCTTCTTCAAGAAG
 AGTTAGGAGACTGTGCTGTTTATACCCCTCCTGCAAGAAATGGCATTGGAGAGCCCGGACATCTGCTTT
 ATATTTCTCTCAGACCATTCCCATCAGTGAGCATTACAGGACCCTCTTTGCAAGTTCAGTGCTTAACCTG
 ACCGAACTGGCTGCCCTTCGGCCTGACCTTGGGAAACTGAAAAAGATTCTGTATTTTACAGAGAACCAGT
 TGATATATCCTGTCAAGAAATGTCAGGAGAGGGATTTCCAATA TGGATACAACCAAATCTTTTCATGCCCT
 GGTGGCTGATGTGGTGTATTCAACTCAGTTTTTAATATGGAATCATTCTCACTTCCATGGGAAAAATTT
 ATGAAGCTGATTCCTGATCACAGACCAAGGATCTGGAAAGCATCATCAGACCAAGTGCCAAGTTATTT
 ACTTTCCCATCAGGTTTCTGATGTGAGCAGATTCATGCCAAGCACAAAACAACCCATTTAAAGAAGAT
 GCTCGGCCTTAAAGGAAATGGCGGTGCGGTTCTGTCCATGGCCCTCCTTTTCAGCCAGAGCAGAGAGAT
 TCAGAGGATTTATTGAAGAATTTAATTCAGAGTGTGATACACACTGTGGCCTTGATACTGCACGACAAG
 AATATTTGGGTAACCTATTAAGACAGGAATCAGACTTGAAAAATCCACCTCGTCAGATAATTCAGCTC
 TCATCATGGTGAAAAATAACAAATCTGACTGTTGATCCCTGTGACATTTTGGTGGAGTTGATAATCAG
 CAAAGACTGCTACACATTGTCTGGCCTCACAGGTGGGAGCATGATAAAGATCCAGAAAGCTTTTTAAGG
 TATTAATGCATCTTAAAGACTTAGGACTCAATTTCCACGTGTCTGACTTGGAGAAACCTTCACAGATGT
 CCCAGATATTTTTTTCAGAGGCCAAAAAGGCATTGGGATCTTCTGTCTTACACTGGGGCTACTTACCCAGC
 AAAGATGACTATTTCCAAGTACTGTGCATGGCTGATGTTGTCATCTCAACAGCTAAGCATGAATCTTTG
 GAGTGGCAATGTTGAAGCTGTGTACTGTGGGTGTACCACCTTGTCTTAAAGATTTGGTTTATCCCGA
 AATATTTCCAGCTGAATATCTGTATTCTACACCTGAACAGCTTTCAAAAAGGCTCCAGAATTTCTGCAAG
 AGACCAGATATTATAAGAAAACATCTCTATAAGGGTGAATCGCTCCGTTTTCTTGGGCAGCCCTACATG
 GTAATTCAGGTCTCTGCTTACAACAGAACCTAGGGAAGATTTG

ACGCGTACGCGGCCGCTCGAGCAGAAACTCATCTCAGAAGAGGATCTGGCAGCAAATGATATCCTGGATT
 ACAAGGATGACGACGATAAGGTTTAA

Protein Sequence:

>RC221336 representing NM_001006636
 Red=Cloning site Green=Tags(s)

MSILIEAFYGGSHKQLVDLLQEELGDCVVYTLPAKKWHWRARTSALYFSQTIPISEHYRTLFASSVLNL
 TELAALRPDLGKLLKILYFHENQLIYPVKKCQERDFQYGYNQILSCLVADVVFVNSVFNMESFLTSMGKF
 MKLIPDHRPKDLESIIIRPKQVIYFPIRFPDVSRFMPKHKHTHLKMLGLKGNNGGAVLSMALPFQPEQRD
 SEDLLKNFNSECDTHCGLDARQEYLGNSLRQESDLKKSTSSDNSSSHHGENKQNLTVDPDILGGVDNQ
 QRLLHIWPHRWEHDKDPESFFKVLMLKDLGLNFHVSVLGETFTDVPDIFSEAKKALGSSVLHWGYLPS
 KDDYFQVLCMADVVIKHEFFGVAMLEAVYCGCYPLCPKDLVYPEIFPAEYLYSTPEQLSKRLQNFCK
 RPDIIIRKHLKGEIAPFSWAALHGKFRSLLTTEPREDL

TRTRPLEQKLISEEDLAANDILDYKDDDDKV

Chromatograms:

https://cdn.origene.com/chromatograms/mk8061_c12.zip

Restriction Sites:

Sgfl-Mlul

Cloning Scheme:


ACCN: NM_001006636

ORF Size: 1374 bp

OTI Disclaimer: The molecular sequence of this clone aligns with the gene accession number as a point of reference only. However, individual transcript sequences of the same gene can differ through naturally occurring variations (e.g. polymorphisms), each with its own valid existence. This clone is substantially in agreement with the reference, but a complete review of all prevailing variants is recommended prior to use. [More info](#)

OTI Annotation: This clone was engineered to express the complete ORF with an expression tag. Expression varies depending on the nature of the gene.

Components: The ORF clone is ion-exchange column purified and shipped in a 2D barcoded Matrix tube containing 10ug of transfection-ready, dried plasmid DNA (reconstitute with 100 ul of water).

- Reconstitution Method:**
1. Centrifuge at 5,000xg for 5min.
 2. Carefully open the tube and add 100ul of sterile water to dissolve the DNA.
 3. Close the tube and incubate for 10 minutes at room temperature.
 4. Briefly vortex the tube and then do a quick spin (less than 5000xg) to concentrate the liquid at the bottom.
 5. Store the suspended plasmid at -20°C. The DNA is stable for at least one year from date of shipping when stored at -20°C.

RefSeq: [NM_001006636.5](#)

RefSeq Size: 2692 bp

RefSeq ORF: 1377 bp

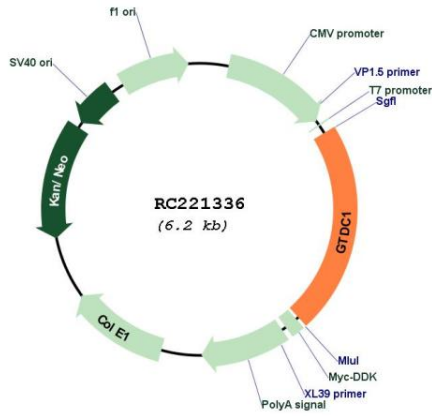
Locus ID: 79712

UniProt ID: [Q4AE62](#)

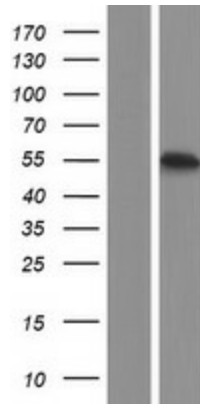
Cytogenetics: 2q22.3

MW: 52.4 kDa

Product images:



Circular map for RC221336



Western blot validation of overexpression lysate (Cat# [LY423533]) using anti-DDK antibody (Cat# [TA50011-100]). Left: Cell lysates from untransfected HEK293T cells; Right: Cell lysates from HEK293T cells transfected with RC221336 using transfection reagent MegaTran 2.0 (Cat# [TT210002]).