

Product datasheet for RC221332

PTPRD (NM_130393) Human Tagged ORF Clone

Product data:

Product Type:	Expression Plasmids
Product Name:	PTPRD (NM_130393) Human Tagged ORF Clone
Tag:	Myc-DDK
Symbol:	PTPRD
Synonyms:	HPTP; HPTPD; HPTPDELTA; PTPD; R-PTP-delta; RPTPDELTA
Vector:	pCMV6-Entry (PS100001)
E. coli Selection:	Kanamycin (25 ug/mL)
Cell Selection:	Neomycin
ORF Nucleotide Sequence:	>RC221332 representing NM_130393 Red=Cloning site Blue=ORF Green=Tags(s)

TTTTGTAATACGACTCACTATAGGGCGCCGGAATTCGTCGACTGGATCCGGTACCGAGGAGATCTGCC
GCC**GCGATCGCC**

ATGGTGACAGTAGCCAGGCTGCTGCTGCTGCTCCTCACTTTCTTCTCCGCACGGATGCTGAGACACCTC
CAAGGTTTACACGAACACCCGTTGATCAGACAGGGGTCTCTGGCGGAGTTGCCTCTTTCATCTGCCAAGC
TACGGGAGACCAAGACCTAAAATTGTCTGGAACAAAAAGGAAAGAAAGTCAGCAATCAGAGATTTGAG
GTAAATAGAGTTTGACGATGGGTCTGGATCAGTTCTCAGAATACAACCTTACGGACTCCGAGGGATGAGG
CCATTTATGAATGTGTGGCCTCAAATAATGTGGGAGAAATAAGTGTATCCACCAGACTCACAGTTTTGCG
GGAAGTCAAATCCCAGGGGCTTCCCTACCATTGACATGGGCCACAGTTGAAGGTGGTTGAGCGTACT
CGCACGGCCACCATGCTTTGTGCAGCCAGTGGTAATCCGGATCCAGAAATCACTTGGTTAAAGATTTCT
TACCTGTGGACACAAGCAACAACAATGGTCGTATTAAGCAGTTACGATCAGAATCTATTGGAGCCCTTCA
GATTGAGCAGAGTGAAGAGTCTGACCAAGGAAAATATGAGTGTGTTGCCACCAACAGCGCGGGCACTCGC
TATTCGGCTCCTGCCAATTTATATGTGAGAGAGCTGCGAGAAGTTCGCCGTGTCCACCAAGATTTCTTA
TCCCACCACTAATCATGAAATCATGCCAGGCGGAAGCGTTAATATCACCTGTGTGGCCGTGGGGTCCAC
AATGCCTTATGTAAGTGGATGTTGGGGCAGAAGATCTGACACCTGAAGATGATATGCCAATAGGAAGA
AATGTGCTAGAACTGAATGATGTAAGACAGTCAGCAAATTAACCTGTGTTGCTATGTCAACACTGGGTG
TCATTGAAGCAATAGCACAGATCACTGTCAAAGCCTTACCCAAACCTCCAGGAACTCCTGTAGTGACCGA
GAGCACAGCTACAAGCATCACACTGACGTGGGACTCTGGGAACCTGAGCCTGTTTCTTATTACATAATT
CAGCATAAACCTAAAACTCTGAGGAACTTTACAAAGAAATTGATGGGGTGGCGACCACACGCTACAGTG
TCGCTGGACTAAGTCCCTACTCGGATTGAATTCAGGGTTGTTGCTGTCAATAACATTGGCGGGGGCC
TCCCAGCGAACCTGTGCTAACACAAACCTCAGAGCAAGCACCATCCAGTGCCCCGAGGGATGTCCAGGCA
CGAATGTTGAGTTCGACCACCTTTTGGTACAGTGAAGGAACCTGAAGGCCAAATGGACAGATCCAAG
GATATAGAGTTTATTATACAATGGATCCCACTCAACATGTCAACAACCTGGATGAAACACAATGTAGCTGA
CAGCCAAATCACTACTATTGGCAACTTAGTGCCCCAGAAAACATATTCTGTCAAAGTCTGGCTTTTACC
TCAATTGGAGATGGTCCCCTTCAAGTGACATACAAGTCATCACTCAGACAGGAGTACCAGGGCAGCCAC



View online »

TAAACTTCAAAGCAGAACCTGAGTCTGAAACAAGTATTTTGCTCTCTGGACACCTCCACGTTCCAGATAC
 CATTGCCAACTATGAACTGGTCTACAAAGATGGGAGCATGGAGAGGAGCAACGAATTACCATTGAGCCA
 GGGACATCATATAGGCTGCAAGGACTGAAACCAACAGCTTATACTATTTCCGTCTGGCTGCACGCTCCC
 CTCAAGGCCTGGGTGCTTCTACTGCAGAAATATCAGCTAGAACCATGCAGTCAACAGTGTTCGAAAAA
 TTTTCATGTCAAAGCAGTAATGAAGACTTCCGTGTTGCTGCTTGGGAGATCCAGAGAATTATAACTCC
 GCCATGCCTTTCAAATTCCTTATGATGATGGGAAAATGGTAGAAGAAGTGGATGGCCGAGCCACACAGA
 AGTTAATTGTCAACCTGAAGCTGAGAAATCATATTCATTTGTGCTGACAAATCGTGGAAACAGTCTGG
 TGGGCTGCAGCACAGGGTCACGGCAAAGACTGCACCAGATGTATTACGTACCAAGCTGCCTTCATTGGG
 AAGACCAACTTGATGGCATGATTACTGTGCAACTGCCTGAAGTACCTGCAAATGAGAATATAAAAGGTT
 ACTACATAAATAATTGTGCCTTTGAAGAAATCTCGCGGAAATTTATCAAGCCATGGGAGAGTCCAGATGA
 AATGGAATTAGATGAGCTGCTTAAGGAGATATCTAGGAAGCGCAGAAGCATCCGTTATGGGAGAGAAGTT
 GAATTAAGCCATATATTGCCGCTCACTTTGATGTCTTCCCACTGAGTTCACCCGTTGGGGATGACAAGC
 ATTTATGGTGGATTTACAAACAAGCAACTCAAAGTGGTCAAGAATATGTCTTCTTTGTGTTAGCAGTAAT
 GGAACATGCAGAGTCTAAGATGTATGCAACCAGCCCTTACTCCGACCCCGTGGTGTCAATGGATCTGGAT
 CCGCAGCCAATCACGGATGAAGAAGAAGGCTTGATCTGGGTTGTAGGTCCTGTCTTGCAGTGGTCTTTA
 TCATCTGCATTGTCAATTGCTATTCTTCTTTATAAAAGGAAGAGGGCAGAGTCCGACTCTAGAAAAAGCAG
 CATAACCGAAATAAAGGAGATCCCTTACACCACCCAACAGACCCCTGTAGAACTGAGGCGCCTTAACTTT
 CAAACACCCGGTATGGCTAGCCATCCTCCAATACCCATCTTGAAGTTCAGACCCACATTGAAAGATTGA
 AAGCAATGACAACCTGAAGTTTTCCAGGAATATGAGTCAATTGACCCTGGCCAGCAGTTCACCTGGGA
 ACATTCAAACTTGAAGTAAACAACCAAAAGAATAGATACGCGAATGTAATCGCATATGATCATTCCCGG
 GTTCTCCTATCAGCTATAGAAGGGATCCAGGAAGTACTATGTGAATGCCAACTACATAGATGGGTATA
 GGAAGCAAAATGCCTATATTGCAACACAGGGATCTCTCCCGAAACATTTGGGGACTTTTGGAGAATGAT
 ATGGGAACAACGGAGTGCCACAGTTGTGATGACAAAACTAGAAGAAGATCAAGGGTGAAGTGTGAC
 CAGTATTGGCCTAGCAGAGGCACAGAAACCCACGGACTCGTTCAAGTAACGCTGCTTGATCTGTGGAGC
 TGCCACATATTGTTCGAACATTTGCACTTTACAAGAATGGTTCAAGTGAAGAAGAGAGAAGTGAAGACA
 ATTCCAGTTCACCGCTGGCCTGATCATGGTGTCCAGAACACCCTACACCTTTTCTAGCTTTCTTACGT
 AGAGTCAAACCTGTAACCCTCCCGATGCTGGTCCGATGGTTGTGCACTGCAGTGCAGGGAGTTGGCCGA
 CTGGTTGCTTCATCGTCATAGATGCCATGTTAGAAAGAATAAAGCATGAAAAAAGTGTAGATATTTATGG
 CCATGTAACCTTAAAGAGAGCCAGAGGAATATGTTCAAACAGAAGACCAATACATCTTTATCCAT
 GATGCACTGTTAGAAGCAGTACTTGTGGAATACCGAAGTCCAGCTAGAACTTGTATGCCTACATTC
 AGAAGCTGACACAAATAGAAACGGGAGAGAATGTCACAGGAATGGAGCTCGAATTTAAGCGTCTAGCCAG
 CTCAAAAGCTCACACCTCAAGTTTTATCAGTGCCAATCTTCCATGTAATAAATTCAAAAATCGCCTTGT
 AATATTATGCCATATGAATCCACAAGGGTATGCCTGCAGCCTATCCGTGGAGTAGAAGGATCTGATTACA
 TCAATGCCAGTTTTATTGATGGATACAGACAACAGAAAGCCTACATCGCTACCCAGGGGCCCTTGGCAGA
 GACCACTGAAGACTTCTGGCGGATGCTCTGGGAACACAATTCACCATAGTTGTGATGCTCACCAGCTG
 CGTGAAATGGGCAGAGAGAAATGTCACCAATACTGGCCAGCAGAACGGTCTGCAAGATACCAGTACTTTG
 TTGTAGATCCCATGGCTGAGTACAACATGCCACAGTATATCCTAAGGGAATCAAGGTACAGATGCCAG
 GGACGGCCAGTCCCGAACAGTAAGGCAGTTCAGTTCAGTACTGCTGAGCAGAGCAAGGAGTCCAAAGTCC
 GGAGAAGGATTTATTGACTTCATCGGCCAAGTCCATAAAAACAAAAGAACAGTTTGGCCAAGATGGACCCA
 TTTCAAGTCCATTGCAGCGCGGGCTTGAAGAAGTGGAGTCTTCATAACGCTAAGCATTGTTTTGGAAG
 AATGAGATATGAAGGAGTTGTAGATATCTTCCAGACTGTCAAATGTTAAGAACAACAGCAGCTATG
 GTACAGACAGAGGATCAATATCAGTTTTCTATCGTGCCGCACTAGAGTACCTGGGCAGCTTTGACCACT
 ATGCAACG

ACGCGTACGCGGCCGCTCGAGCAGAACTCATCTCAGAAGAGGATCTGGCAGCAATGATATCCTGGATT
 ACAAGGATGACGACGATAAGGTTTAA

Protein Sequence: >RC221332 representing NM_130393
 Red=Cloning site Green=Tags(s)

```

MVHVARLLLLL TFFLR TDAETPPRFTRTPVDQTVSGGVASFICQATGDPRPKIVWNKKGKKVSNQRFE
VIEFD DSGSVLR IQPLRTPRDEAIYECVASNNVGEISVSTRLTVLREDQIPRGFPTIDMG PQLKVVERT
RTATMLCAASGNPDPEITWFKDFLPVDTSNNGRIKQLRSE SIGALQIEQSEESDQ GKYE CVATNSAGTR
YSAPANLYVRELREVRVPVPRFSIPPTNHEIMP GGSVNITCVAVGSPMPYVKWMLGAEDLTPEDDMP IGR
NVLELNDVRQSANYTCVAMSTLGVIEAIAQITVKALPKPPGTPVTESTATSITL TWDSGNPEPVSYYII
QHKPKNSEELYKEIDGVATTRYSVAGLSPYSDYEF RVVAVNNIGRGPSEPVL TQTSEQAPSSAPRDVQA
RMLSSTTILVQWKEPEEPNGQIQGYRVYYTMDPTQHVNNMWMKHNVADSQIT TIGNLV PQKTSVKVLAFT
SIGDGPLSSDIQVITQTGVPGQPLNFKAEPESETSILLSWTPPRSDTIANYELVYKDGEGHEEQRITIEP
GTSYRLQGLKPNLSYYFRLAARSPQGLGASTAEISARTMQSTVF AKNFHVKAVMKT SVLLSWEIPENYNS
AMPFKILYDDGKMVEEVDGRATQKLI VNLKPEKSYSFVLTNRGNSAGGLQHRVTAKTAPDVLRTKPAFIG
KTNLDGMTVQLPEVPANENIKGYYIIIVPLKSRGKFIKPWESPDEME LDELLEKISRKRRSIRYGREV
ELKPYIAAHFDVLPTEFTLGD DKHYGGFTNKQLQSGQEVFFVLAVMEHAESKMYATSPYSDPVVSM DLD
POPITDEEGLI WVG PVLAVVFIICIVIAILLYKRKRAESDSRKSSIPNNKEIPSHHPTDPVLRRLNF
QTPGMASHPPPILELADHIERLKANDLKF SQEYESIDPGQQFTWEHSNLEVNKPKNRYANVIA YDHSR
VLLSAIEGIPGSDYVNANYIDGYRQKNAYIATQGSLPETFGDFWRMIWEQRSATVMMTKLEERSVKCD
QYWPSRGTE THGLVQVTL LDTVELATYCVRTFALYKNGSSEKREVRQFQFTAWPDHGVPEHPTPFLAFLR
RVKTCNPPDAGPMVVHCSAGVGRGCFI VIDAMLERIKHEKTVDIYGHVTLMRAQRNMYMQTEDQYIFIH
DALLEAVTCGNTEVPARNLYAYIQKL TQIETGENVTGMELEFKRLASSKAHTSRFISANLPCNKFKNRLV
NIMPYESTRVCLQPIRGVEGSDYINASFIDGYRQQKAYIATQGPLAETTEDFWRMLWEHNSTIVVMLTKL
REMGREKCHQY WPAERSARYQYFVVDPM AEYNMPQYILREFKVT DARDGQSRTVRQFQFTDWEQGVPKS
GEGFIDF IGQVHK TKEQFGQDGPISVHCSAGVGRGVFITLSIVLERMR YEGVVDIFQTVKMLRTQR PAM
VQTEDQYQFSYRAALEYLGSFDHYAT
    
```

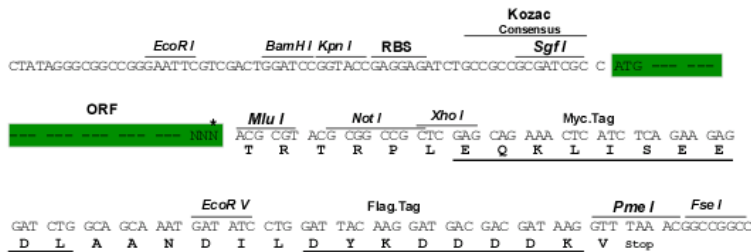
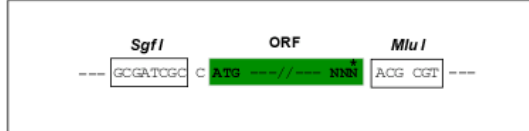
TRTRPLEQKLISEEDLAANDILDYKDDDDKV

Restriction Sites:

SgfI-MluI

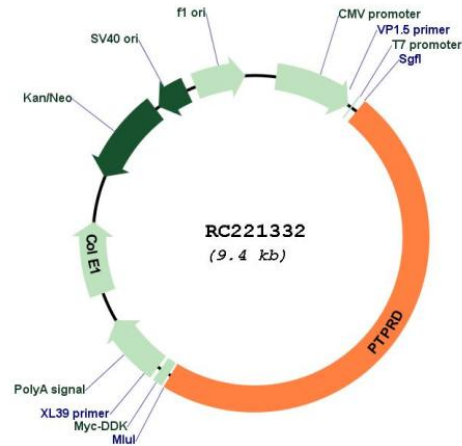
Cloning Scheme:

Cloning sites used for ORF Shuttling:



* The last codon before the Stop codon of the ORF

Plasmid Map:



ACCN: NM_130393

ORF Size: 4488 bp

OTI Disclaimer: The molecular sequence of this clone aligns with the gene accession number as a point of reference only. However, individual transcript sequences of the same gene can differ through naturally occurring variations (e.g. polymorphisms), each with its own valid existence. This clone is substantially in agreement with the reference, but a complete review of all prevailing variants is recommended prior to use. [More info](#)

OTI Annotation: This clone was engineered to express the complete ORF with an expression tag. Expression varies depending on the nature of the gene.

Components: The ORF clone is ion-exchange column purified and shipped in a 2D barcoded Matrix tube containing 10ug of transfection-ready, dried plasmid DNA (reconstitute with 100 ul of water).

Reconstitution Method:

1. Centrifuge at 5,000xg for 5min.
2. Carefully open the tube and add 100ul of sterile water to dissolve the DNA.
3. Close the tube and incubate for 10 minutes at room temperature.
4. Briefly vortex the tube and then do a quick spin (less than 5000xg) to concentrate the liquid at the bottom.
5. Store the suspended plasmid at -20°C. The DNA is stable for at least one year from date of shipping when stored at -20°C.

RefSeq: [NM_130393.3](#), [NP_569077.2](#)

RefSeq Size: 8239 bp

RefSeq ORF: 4491 bp

Locus ID: 5789

Cytogenetics: 9p24.1-p23

Domains: Y_phosphatase, ig, PTPc_motif, IGc2, IG, FN3

Protein Families: Druggable Genome, Phosphatase, Transmembrane

MW: 168.7 kDa

Gene Summary: The protein encoded by this gene is a member of the protein tyrosine phosphatase (PTP) family. PTPs are known to be signaling molecules that regulate a variety of cellular processes including cell growth, differentiation, mitotic cycle, and oncogenic transformation. This PTP contains an extracellular region, a single transmembrane segment and two tandem intracytoplasmic catalytic domains, and thus represents a receptor-type PTP. The extracellular region of this protein is composed of three Ig-like and eight fibronectin type III-like domains. Studies of the similar genes in chicken and fly suggest the role of this PTP is in promoting neurite growth, and regulating neurons axon guidance. Multiple alternatively spliced transcript variants of this gene have been reported. A related pseudogene has been identified on chromosome 5. [provided by RefSeq, Jan 2010]