

## Product datasheet for **RC221328**

### **NOVA1 (NM\_006489) Human Tagged ORF Clone**

#### **Product data:**

Product Type:	Expression Plasmids
Product Name:	NOVA1 (NM_006489) Human Tagged ORF Clone
Tag:	Myc-DDK
Symbol:	NOVA1
Synonyms:	Nova-1
Mammalian Cell Selection:	Neomycin
Vector:	pCMV6-Entry (PS100001)
E. coli Selection:	Kanamycin (25 ug/mL)



[View online »](#)

**ORF Nucleotide Sequence:**

>RC221328 representing NM\_006489  
 Red=Cloning site Blue=ORF Green=Tags(s)

TTTTGTAATACGACTCACTATAGGGCGGCCGGAATTCGTCGACTGGATCCGGTACCGAGGAGATCTGCC  
 GCC**CGCATCGCC**

ATGATGGCGGCAGCTCCCATCCAGCAGAACGGGACCCACACTGGGGTCCCATAGACCTGGACCCGCCG  
 ACTCGCGGAAAAGGCCGCTGGAAGCCCCCTGAAGCCGGCAGCACCAAGAGGACCAATACGGGCGAAGA  
 CGGCCAGTATTTTCTAAAGTTCTCATACCTAGTTATGCTGCTGGATCTATAATTGGGAAGGAGGACAG  
 ACAATTGTTCAAGTTGCAAAAAGAACTGGAGCCACCATCAAGCTGTCTAAGTCCAAAAGTTTTTACCCAG  
 GTACTACTGAGCGAGTGTCTTATCCAGGGAACGGTTGAAGCACTGAATGCAGTTCATGGATTCATTGC  
 AGAAAAAATTCGAGAAATGCCCAAAATGTGGCCAAGACAGAACCAGTCAGCATTCTACAACCCAGACC  
 ACCGTTAATCCAGATCGCATCAAACAAGTAAAGATTATAGTTCCCAACAGCACAGCAGGTCTGATAATAG  
 GGAAGGGAGGTGCTACTGTGAAGGCTGTAAAGGAGCAGTCAAGGGCTTGGGTGCAGCTTTCCAGAAACC  
 TGATGGGATCAACTTGAAGAGAGGGTTGTCAGTGTGAGTGGAGAACCTGAACAAAACCGAAAAGCTGTT  
 GAATTATCATCCAGAAGATACAAGAGGATCCACAAAAGTGGCAGCTGTCTCAATATCAGTTATGCCAATG  
 TGACAGGTCCAGTGGCAAATCCAAATCCAAACCGGATCTCCTTATGCAAACACTGTGAAGTGTACCAAC  
 TGCTGCAGCAGCTGCAGGGCTATTAGGACATGCTAACCTTGTGGCGTTGCAGCCTTTCCAGCAGTTTTA  
 TCTGGCTTACAGGCAATGACCTGGTGGCCATCACCTCTGCACCTAATACATTAGCCAGCTATGGATATA  
 ATCTCAACACTTTAGGTTTAGGTCTCAGTCAAGCAGCAGCAACAGGGGCTTTGGCTGCAGCAGCTGCCAG  
 TGCCAACCCAGCAGCAGCAGCAATTTATTGGCCACCTATGCCAGTGAAGCCTCAGCCAGTGGCAGC  
 ACAGCTGGTGGTACGGCGGGGACATTTGCATTAGGTAGCCTGGCTGCTGCTACTGCTGCAACCAATGGAT  
 ATTTTGGAGCTGCTTCTCCCCTAGCTGCCAGTCCATTCTAGGAACAGAAAAGTCCACAGATGGATCCAA  
 GGATGTAGTTGAAATAGCAGTGGCAGAAAACCTAGTTGGTGAATACTTGGCAAAGGAGGAAAACATTA  
 GTGGAATACCAGGAGTTGACTGGTGAAGGATACAGATCTCAAAAAAGGAGAATTCGTACCTGGCACAA  
 GGAATCGGAAGGTAACCATTAAGTGAACACCAGCTGCAACACAGGCTGCTCAATATTTAATTACACAAAG  
 GATCACATATGAGCAAGGAGTTCGGGCTGCCAATCCTCAGAAAAGTGGGT

**ACGCGT**ACGCGGCCGCTCGAGCAGAAACTCATCTCAGAAGAGGATCTGGCAGCAAATGATATCCTGGATT  
 ACAAGGATGACGACGATAAGGTTTAA

**Protein Sequence:**

>RC221328 representing NM\_006489  
 Red=Cloning site Green=Tags(s)

MMAAAPIQQNGHTGVPIDLDPDSRKRPLEAPPEAGSTKRTNTGEDGQYFLKVLIPSYAAGSIIGKGGQ  
 TIVQLQKETGATIKLSKSKDFYPGTTERVCLIQGTVEALNAVHGFIAEKIREMPQNVAKTEPVSILQPQT  
 TVNPDRIKQVKIIVPNSTAGLIIGKGGATVKAVMEQSGAWVQLSQKPDGINLQERVVTVSGEPEQNRKAV  
 ELIIQKIQEDPQSGSCLNISYANVTGPVANSNPTGSPYANTAEVLPAAAAAGLLGHANLAGVAAFPVAVL  
 SGFTGNDLVAITSALNLTASYGNLNTLGLLSQAAATGALAAAAASANPAAAAANLLATYASEASASGS  
 TAGGTAGTFALGSLAAATAATNGYFGAASPLAASAILGTEKSTDGSKDVVEIAVPENLVGAILGKGGKTL  
 VEYQELTGARIQISKKGEFVPGTRNRKVTITGTPAATQAAQYLITQRITYEQGVRAANPQKVG

**TR**TRPLEQKLISEEDLAANDILDYKDDDDKV

**Chromatograms:**

[https://cdn.origene.com/chromatograms/mk6482\\_g06.zip](https://cdn.origene.com/chromatograms/mk6482_g06.zip)

**Restriction Sites:**

Sgfl-MluI

**Cloning Scheme:**

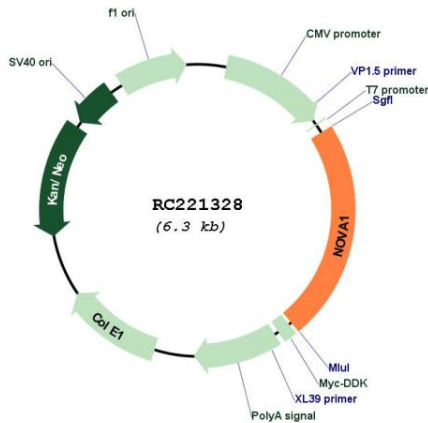

<b>ACCN:</b>	NM_006489
<b>ORF Size:</b>	1449 bp
<b>OTI Disclaimer:</b>	The molecular sequence of this clone aligns with the gene accession number as a point of reference only. However, individual transcript sequences of the same gene can differ through naturally occurring variations (e.g. polymorphisms), each with its own valid existence. This clone is substantially in agreement with the reference, but a complete review of all prevailing variants is recommended prior to use. <a href="#">More info</a>
<b>OTI Annotation:</b>	This clone was engineered to express the complete ORF with an expression tag. Expression varies depending on the nature of the gene.
<b>Components:</b>	The ORF clone is ion-exchange column purified and shipped in a 2D barcoded Matrix tube containing 10ug of transfection-ready, dried plasmid DNA (reconstitute with 100 ul of water).
<b>Reconstitution Method:</b>	<ol style="list-style-type: none"> <li>1. Centrifuge at 5,000xg for 5min.</li> <li>2. Carefully open the tube and add 100ul of sterile water to dissolve the DNA.</li> <li>3. Close the tube and incubate for 10 minutes at room temperature.</li> <li>4. Briefly vortex the tube and then do a quick spin (less than 5000xg) to concentrate the liquid at the bottom.</li> <li>5. Store the suspended plasmid at -20°C. The DNA is stable for at least one year from date of shipping when stored at -20°C.</li> </ol>
<b>RefSeq:</b>	<a href="#">NM_006489.3</a>
<b>RefSeq Size:</b>	3846 bp
<b>RefSeq ORF:</b>	1452 bp
<b>Locus ID:</b>	4857
<b>UniProt ID:</b>	<a href="#">P51513</a>
<b>Cytogenetics:</b>	14q12

**Domains:** KH

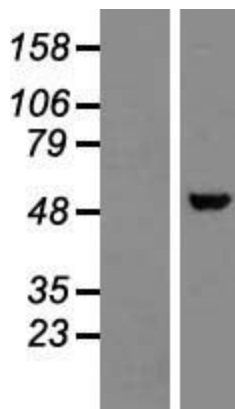
**MW:** 49.1 kDa

**Gene Summary:** This gene encodes a neuron-specific RNA-binding protein, a member of the Nova family of paraneoplastic disease antigens, that is recognized and inhibited by paraneoplastic antibodies. These antibodies are found in the sera of patients with paraneoplastic opsoclonus-ataxia, breast cancer, and small cell lung cancer. Alternatively spliced transcripts encoding distinct isoforms have been described. [provided by RefSeq, Jul 2008]

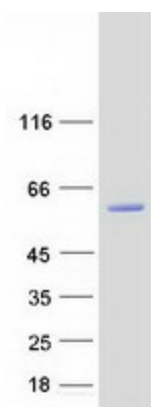
**Product images:**



Circular map for RC221328



Western blot validation of overexpression lysate (Cat# [LY416609]) using anti-DDK antibody (Cat# [TA50011-100]). Left: Cell lysates from untransfected HEK293T cells; Right: Cell lysates from HEK293T cells transfected with RC221328 using transfection reagent MegaTran 2.0 (Cat# [TT210002]).



Coomassie blue staining of purified NOVA1 protein (Cat# [TP321328]). The protein was produced from HEK293T cells transfected with NOVA1 cDNA clone (Cat# RC221328) using MegaTran 2.0 (Cat# [TT210002]).