

Product datasheet for RC221326

Marapsin (PRSS27) (NM_031948) Human Tagged ORF Clone

Product data:

Product Type:	Expression Plasmids
Product Name:	Marapsin (PRSS27) (NM_031948) Human Tagged ORF Clone
Tag:	Myc-DDK
Symbol:	Marapsin
Synonyms:	CAPH2; MPN
Mammalian Cell Selection:	Neomycin
Vector:	pCMV6-Entry (PS100001)
E. coli Selection:	Kanamycin (25 ug/mL)
ORF Nucleotide Sequence:	>RC221326 representing NM_031948 Red=Cloning site Blue=ORF Green=Tags(s)

TTTTGTAATACGACTCACTATAGGGCGGCCGGAATTCGTCGACTGGATCCGGTACCGAGGAGATCTGCC
GCC**CGGATCGCC**

ATGAGGCGGCCGGCGGGTCCGCTCCTGCTGCTGCTGTGTTTTGGGTCTCAGAGGGCCAAGGCAGCAA
CAGCCTGTGGTCGCCCCAGGATGCTGAACCGAATGGTGGGCGGGCAGGACACGCAGGAGGGCGAGTGGCC
CTGGCAAGTCAGCATCCAGCGCAACGGAAGCCACTTCTGCGGGGGCAGCCTCATCGGGAGCAGTGGGT
CTGACGGCTGCGCACTGCTTCCGCAACACCTCTGAGACGTCCCTGTACCAGGTCTGCTGGGGGCAAGGC
AGCTAGTCAGCCGGGACCACACGCTATGTATGCCGGGTGAGGCAGGTGGAGAGCAACCCCTGTACCA
GGGCACGGCTCCAGCGCTGACGTGGCCCTGGTGGAGCTGGAGGCACCAAGTGCCTTACCAATTACATC
CTCCCCGTGTGCCTGCCTGACCCCTCGGTGATCTTTGAGACGGGCATGAACTGCTGGGTCACTGGCTGGG
GCAGCCCCAGTGAGGAAGACCTCCTGCCGAACCGCGGATCCTGCAGAACTCGCTGTGCCATCATCGA
CACACCAAGTGCAACCTGCTCTACAGCAAAGACACCGAGTTGGCTACCAACCCAAAACCATCAAGAA
GACATGCTGTGCGCCGGCTTCGAGGAGGGCAAGAAGGATGCCTGCAAGGGCGACTCGGGCGGCCCTGG
TGTGCCTCGTGGGTCAGTCGTGGCTGCAGGCGGGGTGATCAGCTGGGGTGGGGCTGTGCCCGCCAGAA
CCGCCAGGTGTCTACATCCGTGTCACCGCCACCACAACCTGGATCCATCGGATCATCCCCAACTGCAG
TTCCAGCCAGCGAGTTGGGCGGCCAGAAG

ACGCGTACGCGGGCCGCTCGAGCAGAAACTCATCTCAGAAGAGGATCTGGCAGCAAATGATATCCTGGATT
ACAAGGATGACGACGATAAGGTTTAA



[View online »](#)

Protein Sequence: >RC221326 representing NM_031948
Red=Cloning site Green=Tags(s)

MRRPAAVPLLLLLCFGSQRAKAATACGRPRMLNRMVGGQDTQEGEWPQVSIQRNGSHFCGGSLIAEQWV
 LTAAHCFRNTSETSLYQVLLGARQLVQPGPHAMYARVRQVESNPLYQGTASSADVALVELEAPVPFTNYI
 LPVCLPDPSPVIFETGMNCWWTGWGSPSEEDLLPEPRILQKLAVPIIDTPKCNLLYSKDTFEGYQPKTIKN
 DMLCAGFEEGKKDACKGDSGGPLVCLVGQSWLQAGVISWGEGCARQNRPGVYIRVTAHHNWIHRIIPKLQ
 FQPARLGGQK

TRTRPLEQKLISEEDLAANDILDYKDDDDKV

Chromatograms: https://cdn.origene.com/chromatograms/mk6116_d06.zip

Restriction Sites: SgfI-MluI

Cloning Scheme:



ACCN: NM_031948

ORF Size: 870 bp

OTI Disclaimer: The molecular sequence of this clone aligns with the gene accession number as a point of reference only. However, individual transcript sequences of the same gene can differ through naturally occurring variations (e.g. polymorphisms), each with its own valid existence. This clone is substantially in agreement with the reference, but a complete review of all prevailing variants is recommended prior to use. [More info](#)

OTI Annotation: This clone was engineered to express the complete ORF with an expression tag. Expression varies depending on the nature of the gene.

Components: The ORF clone is ion-exchange column purified and shipped in a 2D barcoded Matrix tube containing 10ug of transfection-ready, dried plasmid DNA (reconstitute with 100 ul of water).

Reconstitution Method:

1. Centrifuge at 5,000xg for 5min.
2. Carefully open the tube and add 100ul of sterile water to dissolve the DNA.
3. Close the tube and incubate for 10 minutes at room temperature.
4. Briefly vortex the tube and then do a quick spin (less than 5000xg) to concentrate the liquid at the bottom.
5. Store the suspended plasmid at -20°C. The DNA is stable for at least one year from date of shipping when stored at -20°C.

RefSeq: [NM_031948.5](#)

RefSeq Size: 1462 bp

RefSeq ORF: 873 bp

Locus ID: 83886

UniProt ID: [Q9BQR3](#)

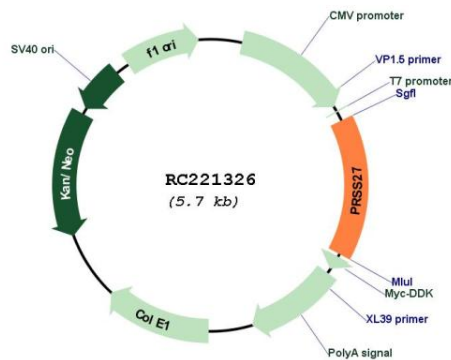
Cytogenetics: 16p13.3

Protein Families: Druggable Genome, Protease, Secreted Protein

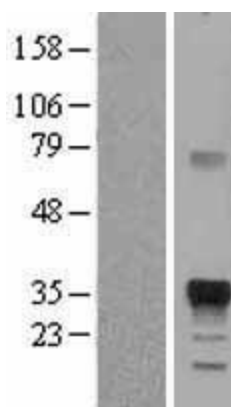
MW: 31.8 kDa

Gene Summary: This gene is located within a large protease gene cluster on chromosome 16. It belongs to the group-1 subfamily of serine proteases. The encoded protein is a secreted tryptic serine protease and is expressed mainly in the pancreas. Alternative splicing results in multiple transcript variants. [provided by RefSeq, Jan 2016]

Product images:



Circular map for RC221326



Western blot validation of overexpression lysate (Cat# [LY403135]) using anti-DDK antibody (Cat# [TA50011-100]). Left: Cell lysates from untransfected HEK293T cells; Right: Cell lysates from HEK293T cells transfected with RC221326 using transfection reagent MegaTran 2.0 (Cat# [TT210002]).