

Product datasheet for **RC221322**

SIX6OS1 (C14orf39) (NM_174978) Human Tagged ORF Clone

Product data:

Product Type:	Expression Plasmids
Product Name:	SIX6OS1 (C14orf39) (NM_174978) Human Tagged ORF Clone
Tag:	Myc-DDK
Symbol:	SIX6OS1
Synonyms:	Six6os1
Mammalian Cell Selection:	Neomycin
Vector:	pCMV6-Entry (PS100001)
E. coli Selection:	Kanamycin (25 ug/mL)



[View online »](#)

ORF Nucleotide Sequence:

>RC221322 ORF sequence
 Red=Cloning site Blue=ORF Green=Tags(s)

TTTTGTAATACGACTCACTATAGGGCGGCCGGAATTCGTCGACTGGATCCGGTACCGAGGAGATCTGCC
 GCC**CGCATCGCC**

ATGAATGACAGCCTGTTTGTCTGAGTTTGGACAGACTTTTGTAGAAATTTGTCTTCCAGTATGAGCAAGACA
 TAAGTACTAAAGAAGAGATGATTCAAAGAATTAATAAATGCTGTGAAGATTAAGGAAAACAAAGTAAC
 TATTTGTAGGATACACGAACTATAAATGCAACAGATGAGGAAATTTGATCATTACTGTAAACATAGTGAG
 GAGATTAAGACAACGTAGAACTGGAAGCCAACATGTGATGTTTTTCGTAAACATGAAGATTATATGC
 AGGACCAATTTACTGTTTATCAAGGAAGTTGAAAAAGCAAAGAAATGTATCATGATTATATATGTCA
 GTATAAAGAAGTTTTGAAGCAGTACCACTAAAATACTCAGAAACACCCTTTTCCAGTGAATATTATGAG
 AAGAAAAGAGAACATGAAGAAATTCAAAGCAGAGTGTGGCATGTACTGAACAATTAATAATGAATGAAA
 CAATTTTTATGAAATTTGAGTGCCTGCTCCCTTTCCATCACTTACTAAATGGACTTTAAACATTGTTAA
 TTTGAGATGTGAAACACAAGATATTCTTAAACATGCCAGCAATCTTACCAAAAAGTTCATCCGAATGAAG
 AAAGAAGTAGATGAAATGGAAATAGAAATTAATTTTAAACCAGCAGATATCTAGGCATAATGAAACTA
 AGGCTCTTTTCAAGAACTCTGGAAGAAAAGAACAAAATACAGAAAACAGAAAAGAACTGAAAGAAAAGAA
 TTTTGGAAAAGATGAGCATGTACTTACATTGAATAAACTCAAAGCAGTCAATTTTCTTCTTATGAA
 TCTCAGAAATTAGTAAGACCAATAAAGATGCATTCTTCAAGAACCAAGAGTTGCAGATATAAAGAAAGAAA
 GTTCTGCGAAGCAGTCAAAGCTTGCCAATTTGACTTTAGACAAAAGAAAATGATACACAGATATTTAA
 TGACTCTGCTGTGGATAACCAATCAAATGTTTACATATTACGACTATCACAAGTTCACAAAAGTTTATG
 CAAGTCAGATTGTTAACCCACAGAAAACAAATCAAATCCAATCAGTGGTCGGAAGGAGGATAAAGATG
 CTGAGTATGGAGATAAAGGACAGTAAGACAAGTAAGAGAATCAAATGTACTTCAAGCTATATATAC
 TGAACATTTTGGGAAGTCAATAGAAAATGATAGTATGAAGTAGAAGAGAGAGCTGAGAATTTTCCACGA
 ACGTCTGAAATCCTATATTTTTAGGAAGCTCCCAAGCTGTGAAAGCACCTGAGTATTGGAGAAAATAA
 AATTCCCTAAAACCCCGCTCGAAATTAACAGAAAATAGAAATGCAGTACCTGAAGTTCAAACAGAAA
 GGAATCCCTGGACTTTCTTTCTTATGAGTTATACTTCTAGATCACCTGGATTGAATTTATTTGATTCT
 TCTGATTTTGATACAGAAATCTCATCAGATCAGTTTAAATGAACATTATTCTGCAAGAAATCTAAATCCTC
 TGTCATCAGACAGGAGATTGGAAGCTTACTTGAGAAGCCAGAAGGAGAAGATGGCTTTACATTTCTTT
 TCCATCAGACACTTCAACTCATACTTTGGAGCTGAAAAGATGATTTTAGTTTTCCATTTTCATTTGGA
 CAGGGTCAAATCAATACCTTCTTCTTTAAAAGTTTTTTCATCTTCTCACAAAATACAACACAGT
 TTACTTTTTTT

ACGCGTACGCGGCCGCTCGAGCAGAACTCATCTCAGAAGAGGATCTGGCAGCAAATGATATCCTGGATT
 ACAAGGATGACGACGATAAGGTTTAA

Protein Sequence:

>RC221322 protein sequence
 Red=Cloning site Green=Tags(s)

MNDSL FVSLDRLLLEFVFQYEQDISTKEEMIQRINKCEDIKENKVTICRIHETINATDEEIDHYCKHSE
 EIKDNCRNWKPTCDVFRKHEDYMQDQFTVYQGTVEKDKEMYHDYICQYKEVLKQYQLKYSETPFSREYYE
 KKREHEEIQSRVLACTEQLKMNETIFMKFRVPAPFPSTLTKWTLNIVNLCETQDILKHASNLTKSSSELK
 KEVDEMEIEINYLNQISRHNKALSETLEKNKNTENRKELKERIFGKDEHVLTLNKTQSSQLFLPYE
 SQKLVRIKMHSSSEPRVADIKEESSAKQSKLANIDFRQKENDTQIFNDSAVDNHNSKSHITITSSQKFM
 QVRLLPQKQSNQWSEKGDKDAEYGDGTVRQVRESKTSQAIYTEHFVKSIENDSDEVEERAENFPR
 TSEIPIFLGTPKAVKAPESLEKIKFPKTPPFEINRNRNAVPEVQTEKESPLSFLMSYTSRSPGLNLFDS
 SVFDTEISSDQFNEHYSARNLNPLSSEQIEGNLLEKPEGEDGFTFSFPSDSTHTTFGAGKDDFSFPFSG
 QGQNSIPSSSLKGFSSSSQNTTQFTFF

TRTRPLEQKLISEEDLAANDILDYKDDDDKV

Chromatograms:

https://cdn.origene.com/chromatograms/mk6670_g07.zip

Restriction Sites: SgfI-MluI

Cloning Scheme:



ACCN: NM_174978

ORF Size: 1761 bp

OTI Disclaimer: The molecular sequence of this clone aligns with the gene accession number as a point of reference only. However, individual transcript sequences of the same gene can differ through naturally occurring variations (e.g. polymorphisms), each with its own valid existence. This clone is substantially in agreement with the reference, but a complete review of all prevailing variants is recommended prior to use. [More info](#)

OTI Annotation: This clone was engineered to express the complete ORF with an expression tag. Expression varies depending on the nature of the gene.

Components: The ORF clone is ion-exchange column purified and shipped in a 2D barcoded Matrix tube containing 10ug of transfection-ready, dried plasmid DNA (reconstitute with 100 ul of water).

- Reconstitution Method:
1. Centrifuge at 5,000xg for 5min.
 2. Carefully open the tube and add 100ul of sterile water to dissolve the DNA.
 3. Close the tube and incubate for 10 minutes at room temperature.
 4. Briefly vortex the tube and then do a quick spin (less than 5000xg) to concentrate the liquid at the bottom.
 5. Store the suspended plasmid at -20°C. The DNA is stable for at least one year from date of shipping when stored at -20°C.

RefSeq: [NM_174978.2](#), [NP_777638.2](#)

RefSeq Size: 2779 bp

RefSeq ORF: 1764 bp

Locus ID: 317761

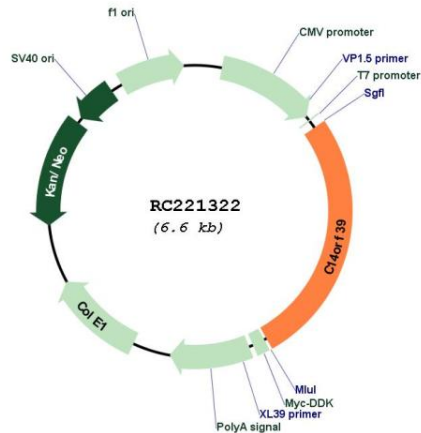
UniProt ID: [Q8N1H7](#)

Cytogenetics: 14q23.1

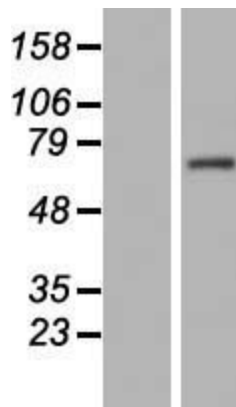
MW: 68.2 kDa

Gene Summary: Meiotic protein that localizes to the central element of the synaptonemal complex and is required for chromosome synapsis during meiotic recombination. Required for the appropriate processing of intermediate recombination nodules before crossover formation. [UniProtKB/Swiss-Prot Function]

Product images:



Circular map for RC221322



Western blot validation of overexpression lysate (Cat# [LY406369]) using anti-DDK antibody (Cat# [TA50011-100]). Left: Cell lysates from untransfected HEK293T cells; Right: Cell lysates from HEK293T cells transfected with RC221322 using transfection reagent MegaTran 2.0 (Cat# [TT210002]).