

Product datasheet for **RC221319**

C3orf15 (MAATS1) (NM_033364) Human Tagged ORF Clone

Product data:

Product Type:	Expression Plasmids
Product Name:	C3orf15 (MAATS1) (NM_033364) Human Tagged ORF Clone
Tag:	Myc-DDK
Symbol:	C3orf15
Synonyms:	AAT1; AAT1alpha; C3orf15; CaM-IP2; MAATS1; SPATA26
Mammalian Cell Selection:	Neomycin
Vector:	pCMV6-Entry (PS100001)
E. coli Selection:	Kanamycin (25 ug/mL)



[View online »](#)

**ORF Nucleotide
Sequence:**

>RC221319 ORF sequence

Red=Cloning site Blue=ORF Green=Tags(s)

 TTTTGAATACGACTCACTATAGGGCGGCCGGAATTCGTCGACTGGATCCGGTACCGAGGAGATCTGCC
GCC**CGCATCGC**C

 ATGAGCCACGCAGTAACCATCGAGGAGCCCCAGGCCAGCCGAGGTGTCTCAAACCTCGGTACCGGAGAG
GGTCGCGGGCTGGGAGCCACATCTCTCCAATCGAGCGTATGATTTTCTGTACGATCCATTGTTTATTGT
GTCAAGTGAGAAAAGACCATACACAGGCAAATATCCAAGCTACCCTGATTCGCAGCAGACTGAGAAAAGTT
CCCAGGTTTAAAACCATGTTTCAGTAACCTGATCCATTATCCAAGATACTCTCTATATTGGAGCAAGTCAG
ATCCTGTCCCACCATTTATCAGTCGGGAATGGAAGGGACATAAGGAGAAACACAGAGAAGCCCTCCGGCA
GCTCACCACAACCTGACGCTTCTTTTCAGATGCCTAAAGAAGTTTATGAAGATCCTGAAGTTACTGGAAG
AATCGCTATAAACTTTGAAAGGCCTTTTCTCCCATTTTTTCAGCAGATGCCATTCAATGTTGTTTATG
CCGTATCCAAGGCAGAACCATACACTTTTCTCCTACTTCTACTAAGCACCTATCCATCCCTTCAAAGTC
TACTGTGGGCACTCAGACTGATTATCGGGATGCTGACGTTCAAACAGATCCATACTCTCCAGAATATGTA
GTATGTCAGGACTCAATCCCTGAGCTCTTGACCTGGCTACGCTTACTTGGGGTCCGGGTCTCCAGCAG
GACAAGCTGAGGTGGAGATGATAGAAAGAGCCCGGAGAGCGTGCTTGGGAAGCCTCTCTCCCCGCTCT
GAGTGACACCTCCAGTTTGAGAAGAGGAGGAAAATGATGAATGAAATGGAGAGGAAGGAGTGGGCCTTC
AGAGAGCAGGAGATTGAAAACTGCAGGAGATTCGCCTGGAAGTTCTAAAAGAGCTGTTGAGGAAGCGTG
AAGAGAATCAGAAATGAAGTGAATATGAAGCACTGAATGCCCGGTGGTCTAACTGCAGGAGGGAAGAA
GGCAAAAATGGCAAAAATTCAGCGCACGCATGTATCAACAATCAGAAAACCTTGAGGAAAGAGAAAGAA
ATAGAAGGGAAGTTGGAGAGAAGAAATATCATCAAGGATTATTCTGATTATGCATCACAGGTCTATGGAC
CTCTGTCTCGTCTTGGGTGTTTCCAGACAACAACCTCAGAGGACTTTGTAGTAAAAAACTACTATCTCAA
CACCTATGAAGGATTAGTGGAACTTGAGTCATGTCTCCAGATTTTGTGACACAACCCCAATCAGAGCT
CCAAAACCTAAAGTCATTACCACCAAAGCTGGTTTTCTGAAGAGGGCAGCAAGGTTGGACTATGAGTTGG
CAGAGGTTCTAAGGCACTGTTGGATAAGAAGAATAAAGTTCTTGAAGTAAAGAAACCCCTCGCTTCCT
TCAAAGAAACCAATACCTCAACCTCGGCTTCCAACCTCCAACCTTGGAATGACGTCCAATGAAGAAGAA
GAAATGGAAATGGCTGTGATCTACCTTCAAAGTTACTCCGGGGCAGAGTCGTTTCAAGACATGATGTTTG
AAGGGAAGAAAGCGACTGGAGTTGATCCAGGAGTTGCGCACCTGCCACGCACTACAAGAAGATGAAAA
GCTGGTGAAGAAAGCCGAGAAGCAAGTGACCCTGGCCTTACAGCGGCAGAGGAACCTGCATGAGCACAAG
GTGTCCTGTTGAAAACCATTTGGCCGACTGGAAGGAAGGGCACTAGCAGACATGTTTGACTTCCTGT
CCAAAGAGCTGGTGAGACTGCAGGAGGAGAGGAGATCCATGCCTTTGTCATGCTGGCTGAGCGCCAGCG
GCGGGTACGAGAGGCTGAAGAGAGTGGTCGGCGCCAGGTGGAAAAACAGCGCTGCGGGAGGAGGACGAG
ATATTTAAGGAGGTGGTTAAAGTTCACCATAGTACTATAAGCTCTACCTAGAAGACATAATACTGAATA
CCGAAGCGAATACTGCAGAAGAACAGCCAGGGCAGAAATAGAGAAGATGGCTGAGAAAAATCAATGACAT
TGCTTATGAAATGGAAAGCCGCCGAACCTATCTTCAGTCAGAGGAGATTGTTGCTGAGTTGGTTTATAGT
TTTCTGATCCCAGAGGTGCAAAAATACTTTGTCAAAGAAAAAGTGAGGAACGCACAGCGGAACATATTC
TTGCAGCCCATCAGATCATCCACAGTTACACGGAAGCATGGTTCAAAGAAATTAAGTGAAGGAGAGCA
AGATGAGGCCTCAAATGCTGCCATGTTACTTGAGAAAGAACTCAAATGAGAACAACAGC

ACGCGTACGCGGGCGCTCGAGCAGAACTCATCTCAGAAGAGGATCTGGCAGCAATGATATCCTGGATT
ACAAGGATGACGACGATAAGGTTTAA

Protein Sequence: >RC221319 protein sequence
 Red=Cloning site Green=Tags(s)

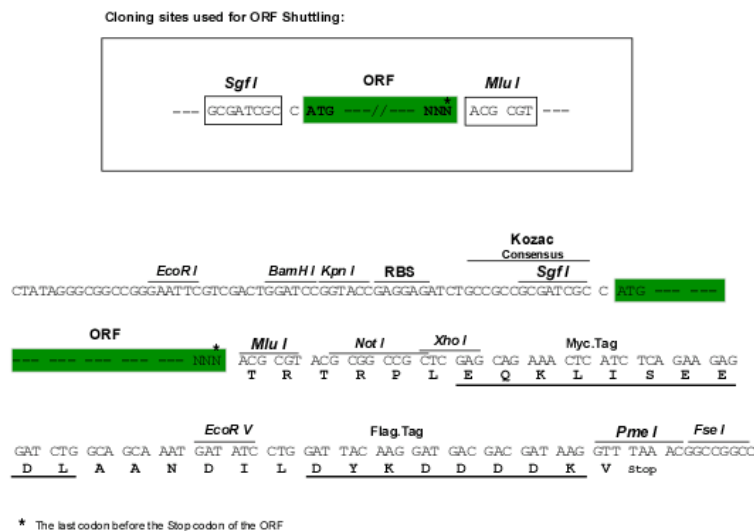
MSHAVTIEEPQAQPQVSQTRYRERSRAGSHISSNRAYDFLYDPLFIVSSEKDHTQANIQATLIRSRLRKV
 PRFKTMFSLNIHYPRYSLYWSKSDPVPPFISREWKGHKEKHREALRQLTTDASFQMPKEVYEDPEVTGK
 NRYKYFERPFLPFFQMPFNVVYAVSKAEPYTFPPTSTKHLIPSSTVGTQTDYRDADVQTDYSPYEV
 VCQDSIPELLTLATLTWGRGLPAGQAEVEMIERAREKRAWEASLPALSDTSQFEKRRKMMNEMERKEWAF
 REQEIEKLQEIRLEVLRKREENQNEVNMKHLNARWSKLQEGKEAKMAKIQRTHVSTIRKLVGKRKN
 IEGKLERRNIKDYSYASQVYGPLSRLGCFPDNNSEDFVVKNNYLNITYEGLVELESCLPDFVTQPQIRA
 PKPKVITTKAGFLKRAARLDYELAEVHKALLDKKNVLEVKKPPRFLQRNPQPRLPTPTLEMTSNEEE
 EMEMAVIYLQKLLGRVVQNMFFEGKEKRELEIQELRTCHALQEDEKLKKAEKQVTLALQRQNLHEHK
 VSLVENHLAGLEGRALADMDFLSKELVRLQEERRIHAFVMLAERQRRVREAEESGRRQVEKQRLREED
 IFKEVVKVHSTISSYLEDIILNTEANTAEQARAEIEKMAEKINDIAYEMESRRTYQLQSEEIVAEVLVYS
 FLIPEVQKYFVKEKVRNAQRKHILAAHQIHSYTESMVQKKLTEGEQDEASNAAMLLEKETQNNNS

TRTRPLEQKLISEEDLAANDILDYKDDDDKV

Chromatograms: https://cdn.origene.com/chromatograms/mk6466_d05.zip

Restriction Sites: SgfI-MluI

Cloning Scheme:



ACCN: NM_033364

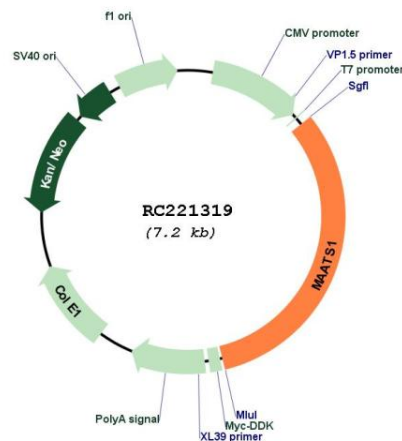
ORF Size: 2301 bp

OTI Disclaimer: The molecular sequence of this clone aligns with the gene accession number as a point of reference only. However, individual transcript sequences of the same gene can differ through naturally occurring variations (e.g. polymorphisms), each with its own valid existence. This clone is substantially in agreement with the reference, but a complete review of all prevailing variants is recommended prior to use. [More info](#)

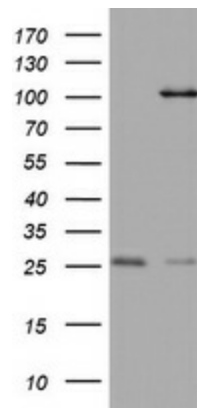
OTI Annotation: This clone was engineered to express the complete ORF with an expression tag. Expression varies depending on the nature of the gene.

Components:	The ORF clone is ion-exchange column purified and shipped in a 2D barcoded Matrix tube containing 10ug of transfection-ready, dried plasmid DNA (reconstitute with 100 ul of water).
Reconstitution Method:	<ol style="list-style-type: none"> 1. Centrifuge at 5,000xg for 5min. 2. Carefully open the tube and add 100ul of sterile water to dissolve the DNA. 3. Close the tube and incubate for 10 minutes at room temperature. 4. Briefly vortex the tube and then do a quick spin (less than 5000xg) to concentrate the liquid at the bottom. 5. Store the suspended plasmid at -20°C. The DNA is stable for at least one year from date of shipping when stored at -20°C.
RefSeq:	<u>NM_033364.4</u>
RefSeq Size:	4449 bp
RefSeq ORF:	2304 bp
Locus ID:	89876
UniProt ID:	<u>Q7Z4T9</u>
Cytogenetics:	3q13.33
MW:	90 kDa
Gene Summary:	May play a role in spermatogenesis (PubMed:12223483). May regulate cilium motility through its role in the assembly of the axonemal radial spokes (By similarity).[UniProtKB/Swiss-Prot Function]

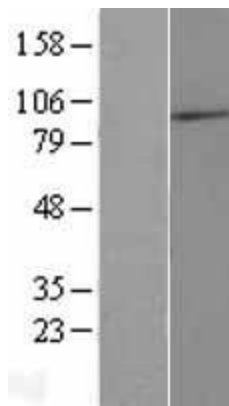
Product images:



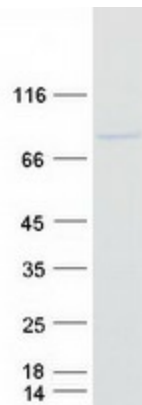
Circular map for RC221319



HEK293T cells were transfected with the pCMV6-ENTRY control (Cat# [PS100001], Left lane) or pCMV6-ENTRY C3orf15 (Cat# RC221319, Right lane) cDNA for 48 hrs and lysed. Equivalent amounts of cell lysates (5 ug per lane) were separated by SDS-PAGE and immunoblotted with anti-C3orf15 (Cat# [TA802361]). Positive lysates [LY409582] (100ug) and [LC409582] (20ug) can be purchased separately from OriGene.



Western blot validation of overexpression lysate (Cat# [LY409582]) using anti-DDK antibody (Cat# [TA50011-100]). Left: Cell lysates from untransfected HEK293T cells; Right: Cell lysates from HEK293T cells transfected with RC221319 using transfection reagent MegaTran 2.0 (Cat# [TT210002]).



Coomassie blue staining of purified MAATS1 protein (Cat# [TP321319]). The protein was produced from HEK293T cells transfected with MAATS1 cDNA clone (Cat# RC221319) using MegaTran 2.0 (Cat# [TT210002]).