

Product datasheet for **RC221313**

DcR1 (TNFRSF10C) (NM_003841) Human Tagged ORF Clone

Product data:

Product Type: Expression Plasmids
Product Name: DcR1 (TNFRSF10C) (NM_003841) Human Tagged ORF Clone
Tag: Myc-DDK
Symbol: DcR1
Synonyms: CD263; DCR1; DCR1-TNFR; LIT; TRAIL-R3; TRAILR3; TRID
Mammalian Cell Selection: Neomycin
Vector: pCMV6-Entry (PS100001)
E. coli Selection: Kanamycin (25 ug/mL)
ORF Nucleotide Sequence: >RC221313 representing NM_003841
Red=Cloning site Blue=ORF Green=Tags(s)

TTTTGTAATACGACTCACTATAGGGCGGCCGGAATTCGTCGACTGGATCCGGTACCGAGGAGATCTGCC
GCC**CGATCGCC**

ATGGCCCGGATCCCCAAGACCCTAAAGTTCGTGTCGTCATCGTCGCGGTCTGTGCCAGTCTAGCTT
ACTCTGCCACCACTGCCCGCAGGAGGAAGTTCGCCAGCAGACAGTGGCCCCACAGCAACAGAGGCACAG
CTTCAAGGGGGAGGAGTGTCCAGCAGGATCTCATAGATCAGAACATACTGGAGCCTGTAAACCGTGACA
GAGGGTGTGGATTACACCAACGCTTCCAACAATGAACCTTCTTGCTTCCCATGTACAGTTTGAAATCAG
ATCAAAAACATAAAAGTTCCTGCACCATGACCAGAGACACAGTGTGTAGTGTAAAGAAGGCACCTCCG
GAATGAAAACCTCCCAGAGATGTGCCGGAAGTGTAGCAGGTGCCCTAGTGGGGAAGTCCAAGTCAGTAAT
TGTACGTCCTGGGATGATATCCAGTGTGTGAAGAATTTGGTGCCAATGCCACTGTGAAACCCAGCTG
CTGAAGAGACAATGAACACCAGCCCGGGGACTCCTGCCCCAGCTGCTGAAGAGACAATGAACACCAGCCC
AGGGACTCCTGCCCCAGCTGCTGAAGAGACAATGACCACCAGCCCGGGGACTCCTGCCCCAGCTGCTGAA
GAGACAATGACCACCAGCCCGGGGACTCCTGCCCCAGCTGCTGAAGAGACAATGACCACCAGCCCGGGGA
CTCCTGCCTCTTCTCATTACCTCTCATGCACCATCGTAGGGATCATAGTTCTAATTGTGCTTCTGATTGT
GTTTGT

ACGCGTACGCGGCCGCTCGAGCAGAAACTCATCTCAGAAGAGGATCTGGCAGCAAATGATATCCTGGATT
ACAAGGATGACGACGATAAGGTTTAA



Protein Sequence: >RC221313 representing NM_003841
Red=Cloning site Green=Tags(s)

MARIPKTLKFVVVIVAVLLPVLAYSATTARQEEVPQQTVPQQQRHSFKGEECPAGSHRSEHTGACNPCT
 EGVDTNASNNEPSCFPCTVCKSDQKHKSSCTMRDTCVQCKEGTFRNENSPEMCRKCSRCPSGEVQVSN
 CTSWDDIQCVVEFGANATVETPAAEETMNTSPGTPAPAAEETMNTSPGTPAPAAEETMTTSPGTPAPAAE
 ETMTTSPGTPAPAAEETMTTSPGTPASSHYLSCTIVGIIVLIVLLIVFV

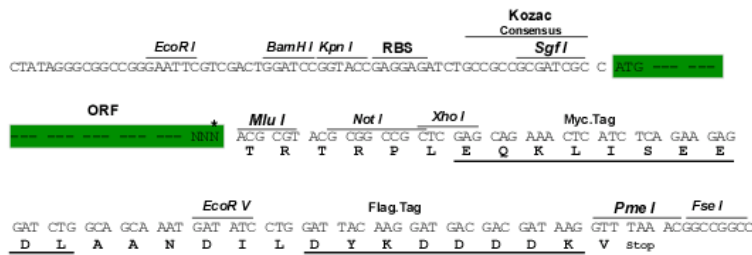
TRTRPLEQKLISEEDLAANDILDYKDDDDKV

Restriction Sites:

Sgfl-MluI

Cloning Scheme:

Cloning sites used for ORF Shuttling:



* The last codon before the Stop codon of the ORF

ACCN: NM_003841

ORF Size: 777 bp

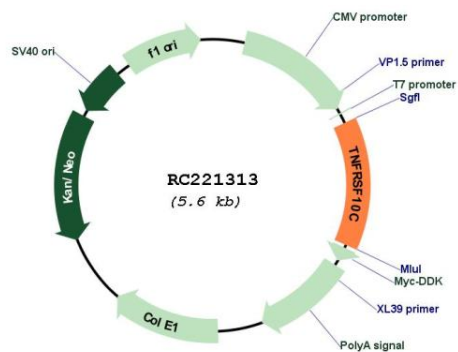
OTI Disclaimer: Due to the inherent nature of this plasmid, standard methods to replicate additional amounts of DNA in E. coli are highly likely to result in mutations and/or rearrangements. Therefore, OriGene does not guarantee the capability to replicate this plasmid DNA. Additional amounts of DNA can be purchased from OriGene with batch-specific, full-sequence verification at a reduced cost. Please contact our customer care team at custsupport@origene.com or by calling 301.340.3188 option 3 for pricing and delivery.

The molecular sequence of this clone aligns with the gene accession number as a point of reference only. However, individual transcript sequences of the same gene can differ through naturally occurring variations (e.g. polymorphisms), each with its own valid existence. This clone is substantially in agreement with the reference, but a complete review of all prevailing variants is recommended prior to use. [More info](#)

OTI Annotation: This clone was engineered to express the complete ORF with an expression tag. Expression varies depending on the nature of the gene.

Components:	The ORF clone is ion-exchange column purified and shipped in a 2D barcoded Matrix tube containing 10ug of transfection-ready, dried plasmid DNA (reconstitute with 100 ul of water).
Reconstitution Method:	<ol style="list-style-type: none">1. Centrifuge at 5,000xg for 5min.2. Carefully open the tube and add 100ul of sterile water to dissolve the DNA.3. Close the tube and incubate for 10 minutes at room temperature.4. Briefly vortex the tube and then do a quick spin (less than 5000xg) to concentrate the liquid at the bottom.5. Store the suspended plasmid at -20°C. The DNA is stable for at least one year from date of shipping when stored at -20°C.
RefSeq:	<u>NM_003841.4</u>
RefSeq Size:	1512 bp
RefSeq ORF:	780 bp
Locus ID:	8794
UniProt ID:	<u>O14798</u>
Cytogenetics:	8p21.3
Domains:	TNFR
Protein Families:	Druggable Genome, Transmembrane
Protein Pathways:	Apoptosis, Cytokine-cytokine receptor interaction, Natural killer cell mediated cytotoxicity
MW:	27.8 kDa
Gene Summary:	<p>The protein encoded by this gene is a member of the TNF-receptor superfamily. This receptor contains an extracellular TRAIL-binding domain and a transmembrane domain, but no cytoplasmic death domain. This receptor is not capable of inducing apoptosis, and is thought to function as an antagonistic receptor that protects cells from TRAIL-induced apoptosis. This gene was found to be a p53-regulated DNA damage-inducible gene. The expression of this gene was detected in many normal tissues but not in most cancer cell lines, which may explain the specific sensitivity of cancer cells to the apoptosis-inducing activity of TRAIL. [provided by RefSeq, Jul 2008]</p>

Product images:



Circular map for RC221313