

Product datasheet for RC221307

C22orf24 (NM_015372) Human Tagged ORF Clone

Product data:

Product Type: Expression Plasmids
Product Name: C22orf24 (NM_015372) Human Tagged ORF Clone
Tag: Myc-DDK
Symbol: C22orf24
Synonyms: HSN44A4A
Mammalian Cell Selection: Neomycin
Vector: pCMV6-Entry (PS100001)
E. coli Selection: Kanamycin (25 ug/mL)
ORF Nucleotide Sequence: >RC221307 representing NM_015372
 Red=Cloning site Blue=ORF Green=Tags(s)

TTTTGTAATACGACTCACTATAGGGCGGCCGGAATTCGTCGACTGGATCCGGTACCGAGGAGATCTGCC
 GCC**CGATCGCC**

ATGACAACCAAGAGGATACAACAGGGCTGCATCAAAGACAAGTCTTTGGACCATGTCAAGACCTGGAG
 CGAAGAAGGTAATGAACCTCTACTTCATAGCAGGCTGTGGCCAGCAGTTTGCTACTACGCTGTCTCTTG
 GTTAAGGCAAGGTTTCAGTATCAACCTGACTTCTTTTGAAGGATCCCTTGGCCTCACGCTGGAGTGGC
 ACCTGCCCTAGCCACAGAGCTGGATTTCTCCCTTCTCAATCACACAGGGAGCACCCTATGCAAAGA
 CCTCATCACATTCACAGCCGTCTCCGAGAGCCTCGCACTGTGCTTGGCATATAGCAGGTGCTCAATAAA
 TATCTGCCAAATGACTGAATGCATCTCGCTAGCCTCAGGATGCCACCAGGCCCTGAGGGAGCCAGGAAGA
 TCAGAGGAAAGCTTTTGGATTCTGCCACACCTTACATTAGCAACATCTTCTCCGAGTCC

ACGCGTACGCGGCCGCTCGAGCAGAACTCATCTCAGAAGAGGATCTGGCAGCAAATGATATCCTGGATT
 ACAAGGATGACGACGATAAGGTTTAA

Protein Sequence: >RC221307 representing NM_015372
 Red=Cloning site Green=Tags(s)

MTTQEDTTGLHQKTSWMSRPGAKKVMNSYFIAGCGPAVCYYAVSWLRQGF SINLTSFGRIPWPHAGVG
 TCPSPQSWISPFQSHREHHYAKTSSHSQPSPQSLALCLAYSRC SINICQMTECISLASGCHQALREPGR
 SEESFWIPATPYISNIFSES

TRTRPLEQKLI SEEDLAANDILDYKDDDDKV

Chromatograms: https://cdn.origene.com/chromatograms/mk8009_c08.zip



[View online »](#)

Restriction Sites: SgfI-MluI

Cloning Scheme:



ACCN: NM_015372

ORF Size: 480 bp

OTI Disclaimer: The molecular sequence of this clone aligns with the gene accession number as a point of reference only. However, individual transcript sequences of the same gene can differ through naturally occurring variations (e.g. polymorphisms), each with its own valid existence. This clone is substantially in agreement with the reference, but a complete review of all prevailing variants is recommended prior to use. [More info](#)

OTI Annotation: This clone was engineered to express the complete ORF with an expression tag. Expression varies depending on the nature of the gene.

Components: The ORF clone is ion-exchange column purified and shipped in a 2D barcoded Matrix tube containing 10ug of transfection-ready, dried plasmid DNA (reconstitute with 100 ul of water).

Reconstitution Method:

1. Centrifuge at 5,000xg for 5min.
2. Carefully open the tube and add 100ul of sterile water to dissolve the DNA.
3. Close the tube and incubate for 10 minutes at room temperature.
4. Briefly vortex the tube and then do a quick spin (less than 5000xg) to concentrate the liquid at the bottom.
5. Store the suspended plasmid at -20°C. The DNA is stable for at least one year from date of shipping when stored at -20°C.

RefSeq: [NM_015372.2](#), [NP_056187.1](#)

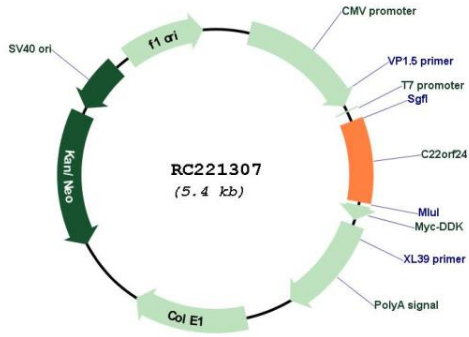
RefSeq Size: 1247 bp

RefSeq ORF: 483 bp

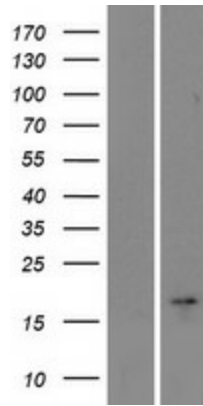
Locus ID: 25775

UniProt ID: [Q9Y442](#)
 Cytogenetics: 22q12.3
 Protein Families: Transmembrane
 MW: 17.6 kDa

Product images:



Circular map for RC221307



Western blot validation of overexpression lysate (Cat# [LY414590]) using anti-DDK antibody (Cat# [TA50011-100]). Left: Cell lysates from untransfected HEK293T cells; Right: Cell lysates from HEK293T cells transfected with RC221307 using transfection reagent MegaTran 2.0 (Cat# [TT210002]).