

## Product datasheet for RC221306

### SUV420h1 (KMT5B) (NM\_016028) Human Tagged ORF Clone

#### Product data:

Product Type:	Expression Plasmids
Product Name:	SUV420h1 (KMT5B) (NM_016028) Human Tagged ORF Clone
Tag:	Myc-DDK
Symbol:	SUV420h1
Synonyms:	CGI-85; CGI85; MRD51; SUV420H1
Mammalian Cell Selection:	Neomycin
Vector:	pCMV6-Entry (PS100001)
E. coli Selection:	Kanamycin (25 ug/mL)
ORF Nucleotide Sequence:	>RC221306 representing NM_016028 Red=Cloning site Blue=ORF Green=Tags(s)

TTTTGTAATACGACTCACTATAGGGCGGCCGGAATTCGTCGACTGGATCCGGTACCGAGGAGATCTGCC  
GCC**CGATCGCC**

ATGAAGTGGTTGGGAGAATCCAAGAACATGGTGGTGAATGGCAGGAGAAATGGAGGCAAGTTGTCTAATG  
ACCATCAGCAGAATCAATCAAAATTACAGCACACGGGGAAGGACACCCCTGAAGGCTGGCAAAAATGCAGT  
CGAGAGGAGGTCGAACAGATGTAATGGTAACTCGGGATTTGAAGGACAGAGTCGCTATGTACCATCCTCT  
GGAATGTCGCCAAGGAACCTGTGAAAATGATGACCTAGCAACCAGTTTGGTCTTGATCCCTATTTAG  
GTTTTCAAACACACAAAATGAATACTAGCGCCTTTCCTTCGAGGAGCTCAAGGCATTTTTCAAATCTGA  
CAGTTTTCTCACAAACCCCTGTGAGATTTAGGCCTATTAAGGAAGGCAGGAAGAACTAAAGGAAGTA  
ATTGAACGTTTTAAGAAAGATGAACACTTGGAGAAAGCCTTCAAATGTTTGACTTCAGGCGAATGGGCAC  
GGCACTATTTCTCAACAAGAATAAAATGCAGGAGAAATATTCAAAGAACATGTATTTATTTATTTGCG  
AATGTTTGCAACTGACAGTGGATTTGAAATATTGCCATGTAATAGATACTCATCAGAACAAAATGGAGCC  
AAAATAGTTGCAACAAAAGAGTGGAAACGAAATGACAAAATAGAATTACTGGTGGGTTGTATTGCCGAAC  
TTTCAGAAATTGAGGAGAACATGCTACTTAGACATGGAGAAAACGACTTCAGTGTACTGACTCCACAAG  
GAAAAACTGTGCTCAACTCTGGCTGGTCTGCTGCGTTTATAAACCATGATTGCAGACCTAATTGTAAG  
TTTGTCACACTGGTCGAGATACAGCATGTGTGAAGGCTAAGAGACATTGAACCTGGAGAAGAAATTT  
CTTGTTATTATGGAGATGGGTTCTTTGGAGAAAATAATGAGTTCTGCGAGTGTTACACTTGCGAAAAGACG  
GGGCACTGGTGTCTTTAAATCCAGAGTGGGACTGCCTGCGCCTGCTCCTGTTATCAATAGCAAATATGGA  
CTCAGAGAAAACAGATAAACGTTTAAATAGGCTTAAAAAGTTAGGTGACAGCAGCAAAAATTCAGACAGTC  
AATCTGTCAGCTTAACACTGATGCAGATACCACTCAGGAAAAAACAATGCAAGTAAG

**ACGCGT**ACGCGGCCGCTCGAGCAGAAACTCATCTCAGAAGAGGATCTGGCAGCAATGATATCCTGGATT  
ACAAGGATGACGACGATAAGGTTTAA



[View online »](#)

**Protein Sequence:** >RC221306 representing NM\_016028  
 Red=Cloning site Green=Tags(s)

MKWLGESKNMNVNRRNGGKLSNDHQQNQSKLQHTGKDTLKAGKNAVERRSNRCNGNSGFEGQSRYPVSS  
 GMSAKELCENDDLATSLVLDPYLGFQTHKMNTSAFSPSRSSRHF SKSDSF SHNNPVRFRPIKGRQEELKEV  
 IERFKKDEHLEKAFKCLTSGEWARHYFLNKNKMQEKL FKEHVFIYLRFM FATDSGFEILPCNRYSEQNGA  
 KIVATKEWKRNDKIELLVGCI AELSEIEENMLLRHGENDF SVMYSTRKNC AQLWL GPAAF INHDCRPNCK  
 FVSTGRDTACVKALRDIEPGEEISCYYGDGF FGENNEFCECYTCERRGTGAFKSRVGLPAPAPVINSKYG  
 LRETDKRLNRLKKLGDSSKNSDSQSVSSNTDADTTQEKNNAK

TRTRPLEQKLISEEDLAANDILDYKDDDDKV

**Chromatograms:** [https://cdn.origene.com/chromatograms/mk8056\\_g08.zip](https://cdn.origene.com/chromatograms/mk8056_g08.zip)

**Restriction Sites:** SgfI-MluI

**Cloning Scheme:**



\* The last codon before the Stop codon of the ORF

**ACCN:** NM\_016028

**ORF Size:** 1179 bp

**OTI Disclaimer:** The molecular sequence of this clone aligns with the gene accession number as a point of reference only. However, individual transcript sequences of the same gene can differ through naturally occurring variations (e.g. polymorphisms), each with its own valid existence. This clone is substantially in agreement with the reference, but a complete review of all prevailing variants is recommended prior to use. [More info](#)

**OTI Annotation:** This clone was engineered to express the complete ORF with an expression tag. Expression varies depending on the nature of the gene.

**Components:** The ORF clone is ion-exchange column purified and shipped in a 2D barcoded Matrix tube containing 10ug of transfection-ready, dried plasmid DNA (reconstitute with 100 ul of water).

**Reconstitution Method:**

1. Centrifuge at 5,000xg for 5min.
2. Carefully open the tube and add 100ul of sterile water to dissolve the DNA.
3. Close the tube and incubate for 10 minutes at room temperature.
4. Briefly vortex the tube and then do a quick spin (less than 5000xg) to concentrate the liquid at the bottom.
5. Store the suspended plasmid at -20°C. The DNA is stable for at least one year from date of shipping when stored at -20°C.

**RefSeq:** [NM\\_016028.4](#), [NP\\_057112.3](#)

**RefSeq Size:** 2711 bp

**RefSeq ORF:** 1182 bp

**Locus ID:** 51111

**UniProt ID:** [Q4FZB7](#)

**Cytogenetics:** 11q13.2

**Domains:** SET

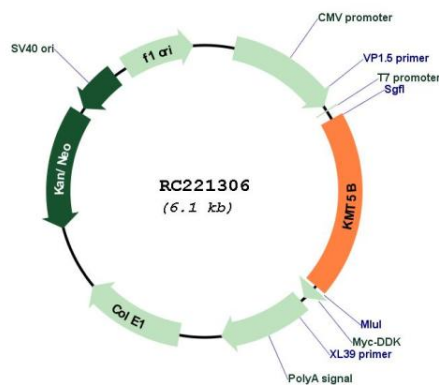
**Protein Families:** Druggable Genome

**Protein Pathways:** Lysine degradation

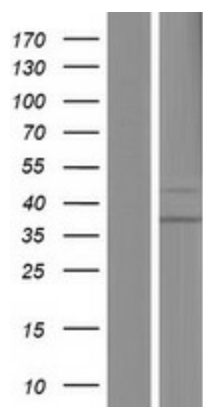
**MW:** 44.4 kDa

**Gene Summary:** This gene encodes a protein that contains a SET domain. SET domains appear to be protein-protein interaction domains that mediate interactions with a family of proteins that display similarity with dual-specificity phosphatases (dsPTPases). The function of this gene has not been determined. Several alternatively spliced transcript variants encoding different isoforms have been found for this gene. [provided by RefSeq, Jul 2014]

### Product images:



Circular map for RC221306



Western blot validation of overexpression lysate (Cat# [LY414238]) using anti-DDK antibody (Cat# [TA50011-100]). Left: Cell lysates from untransfected HEK293T cells; Right: Cell lysates from HEK293T cells transfected with RC221306 using transfection reagent MegaTran 2.0 (Cat# [TT210002]).