

## Product datasheet for RC221300

### C9ORF4 (FRRS1L) (NM\_014334) Human Tagged ORF Clone

#### Product data:

|                           |   |
|---------------------------|---|
| Product Type:             | Expression Plasmids   |
| Product Name:             | C9ORF4 (FRRS1L) (NM_014334) Human Tagged ORF Clone                          |
| Tag:                      | Myc-DDK   |
| Symbol:                   | C9ORF4  |
| Synonyms:                 | C9orf4; CG-6; CG6; DEE37; EIEE37  |
| Mammalian Cell Selection: | Neomycin  |
| Vector:                   | pCMV6-Entry (PS100001)  |
| E. coli Selection:        | Kanamycin (25 ug/mL)  |
| ORF Nucleotide Sequence:  | >RC221300 representing NM_014334<br>Red=Cloning site Blue=ORF Green=Tags(s) |

TTTTGTAATACGACTCACTATAGGGCGGCCGGAATTCGTCGACTGGATCCGGTACCGAGGAGATCTGCC  
GCC**CGATCGCC**

ATGCGCAGACCGAGGCAGGGAGGCGGGGTGCGGGAGGCTCCGCGGCTGCGCGGGCGCGTGCTGGTGGCC  
TCGGCGGAGGCTCAGTCCCGCCCGCGCCCGCGGCCCGCTGCGGCCGAGCGGCCTGGCTGCGGGA  
TCTGTGCGCAGCGATGGCGGGCCGCCCGGCAGCACCCGGGGTCTGGGCGTCGCTGCTCCTGCTGCTA  
CTGACGGGGCCCGCCGCTGCGCAGCCAGCCCCGCGGACGACGGTGGGGCCCGGGGGCCGGGACCCC  
GGGACCGCGCGGGGGACACGGGCGCCGACGAGGCGGTGCCGCGCCACGACTCCTCCTACGGCACCTT  
CGCGGGGAGTTCTACGACTGCGCTACCTGTCGAGGAGGGTTACCCCTTCCCTACTGCTCCTCCTGTG  
GATCCATTTGCCAAAATCAAAGTGGACGACTGTGAAAACTAAGGGATGCTTTAGATATGGCAAACAG  
GCTGTAATGCAGAGACCTGTGACTATTTCTCAGCTACCGGATGATAGGGGCTGATGTAGAATTTGAGCT  
GAGTGCAGACACAGATGGTTGGGTAGCAGTTGGATTCTCTTCAGACAAGAAAATGGGTGGTATGATGTC  
ATGGCCTGCGTCCATGATGACAAATGGCAGGGTCCGCATACAGCACTTCTATAATGTAGGCCAGTGGGCAA  
AGGAGATTCAGAGAAACCCTGCCAGAGATGAAGAAGGAGTTTTTGAACAATCGCGTCACTGCAGATT  
TAAACGCCCTGTGAATGTTCCAGAGATGAAACAATTGTTGATCTGCATTTGAGTTGGTATTATCTGTTT  
GCTTGGGTCCAGCCATTCAGGGCTCTACTCGACATGATATAGACTACCGCCGGCTTCAGAGCGTG  
TTGTCAGTATTTACAAGTATGAAGACATTTTTATGCCATCAGCTGCCTATCAAACCTTCTCATCTCCATT  
TTGTTGCTTCTGATTGTTGCTCTGACCTTCTACCTATTGATGGGAACCCCC

**ACGCGT**ACGCGGCCGCTCGAGCAGAAACTCATCTCAGAAGAGGATCTGGCAGCAAATGATATCCTGGATT  
ACAAGGATGACGACGATAAGGTTTAA



[View online »](#)

**Protein Sequence:** >RC221300 representing NM\_014334  
Red=Cloning site Green=Tags(s)

MRRPRQGGGGAGGSAAARARAGGLGGGSVPARARGAPAAARAAWLRDLCAAMARPPRQHPGVWASLLLL  
 LTGPAACAASPADDGAGPGGRGRGRARGDTGADEAVPRHDSSYGTFAGEFYDLRYLSEEGYFPPTAPPV  
 DPF AKIKVDDCGKTKGCFRYGKPGCNAETCDYFLSYRMIGADVEFELSADTDGWAVVGFSSDKKMGDDV  
 MACVHDDNGRVRIQHFYNVGQWAKEIQRNPARDEEGVFENNRVTCRFKRPVNVPRDETIVDLHLSWYYLF  
 AWGPAIQGSITRHDIDSPPASERVVSIYKYEDI FMP SAA YQTFSSPFCLLLIVALTFYLLMGTP

TRTRPLEQKLISEEDLAANDILDYKDDDDK

**Chromatograms:** [https://cdn.origene.com/chromatograms/mk8008\\_h10.zip](https://cdn.origene.com/chromatograms/mk8008_h10.zip)

**Restriction Sites:** SgfI-MluI

**Cloning Scheme:**

Cloning sites used for ORF Shuttling:



\* The last codon before the Stop codon of the ORF

**ACCN:** NM\_014334

**ORF Size:** 1032 bp

**OTI Disclaimer:** The molecular sequence of this clone aligns with the gene accession number as a point of reference only. However, individual transcript sequences of the same gene can differ through naturally occurring variations (e.g. polymorphisms), each with its own valid existence. This clone is substantially in agreement with the reference, but a complete review of all prevailing variants is recommended prior to use. [More info](#)

**OTI Annotation:** This clone was engineered to express the complete ORF with an expression tag. Expression varies depending on the nature of the gene.

**Components:** The ORF clone is ion-exchange column purified and shipped in a 2D barcoded Matrix tube containing 10ug of transfection-ready, dried plasmid DNA (reconstitute with 100 ul of water).

**Reconstitution Method:**

1. Centrifuge at 5,000xg for 5min.
2. Carefully open the tube and add 100ul of sterile water to dissolve the DNA.
3. Close the tube and incubate for 10 minutes at room temperature.
4. Briefly vortex the tube and then do a quick spin (less than 5000xg) to concentrate the liquid at the bottom.
5. Store the suspended plasmid at -20°C. The DNA is stable for at least one year from date of shipping when stored at -20°C.

**RefSeq:** [NM\\_014334.1](#), [NP\\_055149.1](#)

**RefSeq Size:** 1133 bp

**RefSeq ORF:** 882 bp

**Locus ID:** 23732

**UniProt ID:** [Q9P0K9](#)

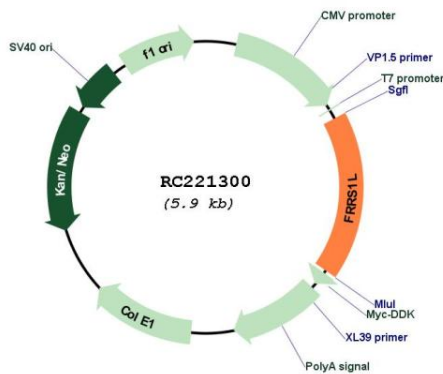
**Cytogenetics:** 9q31.3

**Protein Families:** Transmembrane

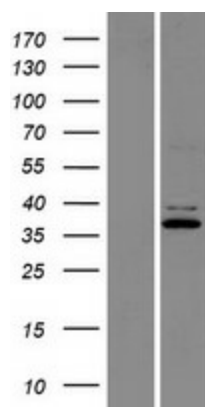
**MW:** 37.1 kDa

**Gene Summary:** This gene encodes a component of the outer-core of an alpha-amino-3-hydroxy-5-methyl-4-isoxazolepropionic acid (AMPA) receptor protein in the brain. The encoded protein is thought to interact with inner-core components of the receptor, and play a role in the modulation of glutamate signaling. Mutations in this gene are associated with early infantile epileptic encephalopathy 37. [provided by RefSeq, Jul 2016]

### Product images:



Circular map for RC221300



Western blot validation of overexpression lysate (Cat# [LY415351]) using anti-DDK antibody (Cat# [TA50011-100]). Left: Cell lysates from untransfected HEK293T cells; Right: Cell lysates from HEK293T cells transfected with RC221300 using transfection reagent MegaTran 2.0 (Cat# [TT210002]).