

Product datasheet for RC221291

ZNF707 (NM_001100599) Human Tagged ORF Clone

Product data:

| | |
|---------------------------|---|
| Product Type: | Expression Plasmids |
| Product Name: | ZNF707 (NM_001100599) Human Tagged ORF Clone |
| Tag: | Myc-DDK |
| Symbol: | ZNF707 |
| Mammalian Cell Selection: | Neomycin |
| Vector: | pCMV6-Entry (PS100001) |
| E. coli Selection: | Kanamycin (25 ug/mL) |
| ORF Nucleotide Sequence: | >RC221291 ORF sequence Red=Cloning site Blue=ORF Green=Tags(s) |

TTTTGTAATACGACTCACTATAGGGCGGCCGGAATTCGTCGACTGGATCCGGTACCGAGGAGATCTGCCGCCGCGATCGCC

ATGGCCCAGGAGCCAGTGACCTTCAGGGACGTGGCCATCTACTTCTCAAGGGAGGAGTGGGCGTGTCTGG
AACCCAGCCAGAGGGCCCTCTACCGGGACGTGATGCTGGACAACCTCAGCAGTGTGGCTGCTCTGGGATT
TTGCAGCCCCAGACCAGACCTCGTCTCTCGCTGGAACAGTGGGAGGAGCCGTGGGTTGAAGACCGGGAG
AGACCTGAGTTCAGGCAGTGCAGAGGGGACCCCGCCAGGGGCAAGGAAGTCTGCAGACCCCAAGAGAC
ATTGTGATCATCCAGCTTGGGCTACAAGAAAACCCAGTGCGGCGAGAAAGCCAGGGAAGGAAGCAGC
CTTTAGGAAGGGCTTCAGGCTGGACACGGATGACGGGCAGCTTCCAGAGCTGCTCCAGAAAGACAGAC
GCCAAGCCACGGCTTCCCGTGTGAGGTGCTCACGCAGCGTTGTGGCGGCGGGCCGGCCGAGAGAGC
GCCGGAAGCAGCGCGCAGTAGAGCTGTCGTTTCATCTGCGGCACGTGCGGGAAGGCGCTCAGCTGCCACAG
CCGGCTGCTCGCTCACCAGACGGTGCACACGGGAACCAAGGCCTTCGAGTGCCCCGAGTGCGGCCAGACC
TTCCGGTGGGCTTCAAACCTGCAGCGCCACCAGAAGAACCACACGCGGAGAAAGCCCTTCTGCTGCGAGG
CCTGCGGGCAGGCGTTCAGCCTGAAGGACCGCCTGGCTCAGCACCAGGTCACACCGAGCACAGGCC
CTACTCGTGTGGCGACTGTGGGAAAGCCTTCAAGCAGAAGTCAAACCTTCTCAGACACCAGCTGGTGCAC
ACCGGGGAGCGGCGTTTCTACTGCGGGACTGCGGCAAAGCCTTCCGGACCAAGGAGAACCTCAGCCACC
ACCAGAGGGTCCACAGCGGGGAGAAGCCCTACACCTGTGCCGAGTGCGGCAAGTCCCTCCGGTGGCCCAA
GGGCTTACGATCCACCGGAGGCTGCACCTGACGAAGAGGTTCTACGAGTGCGGCCACTGTGGGAAAGGC
TTCCGTCACTGGGGTTCTTACGCGGCATCAGAGGACTCACAGGCACGGGGAGGTG

ACGCGTACGCGGCCGCTCGAGCAGAAACTCATCTCAGAAGAGGATCTGGCAGCAAATGATATCCTGGATT
ACAAGGATGACGACGATAAGGTTTAA



[View online »](#)

Protein Sequence: >RC221291 protein sequence
Red=Cloning site Green=Tags(s)

MAQEPVTRFDVAIYFSREEWACLEPSQRALYRDVMLDNFSSVAALGFCSRPDLVSRLEQWEEPWVEDRE
 RPEFQAVQRGPRPGARKSADPKRHCDHPAWAHKKTHVRRERAREGSSFRKGFRLDIDDGQLPRAAPERTD
 AKPTAFPCQVL TQRCGRPRGRERRRQRAVELSFICGTGKALSCHSRLLAHQTVHTGTAFECPECGQT
 FRWASNLQRHQKNHTREKPFCEACGQAFSLKDRLAQHRKVHTEHRPYSCGDCGKAFKQKSNLLRHQLVH
 TGERPFYCADCGKAFRTKENLSHHQRVHSGEKPYTCAECGKSFWRWPKGFSIHRRLHLTKRFYECGHCGKG
 FRHLGFFTRHQTRHRGVEV

TRTRPLEQKLISEEDLAANDILDYKDDDDKV

Chromatograms: https://cdn.origene.com/chromatograms/mk6539_e12.zip

Restriction Sites: SgfI-MluI

Cloning Scheme:

Cloning sites used for ORF Shuttling:



* The last codon before the Stop codon of the ORF

ACCN: NM_001100599

ORF Size: 1107 bp

OTI Disclaimer: The molecular sequence of this clone aligns with the gene accession number as a point of reference only. However, individual transcript sequences of the same gene can differ through naturally occurring variations (e.g. polymorphisms), each with its own valid existence. This clone is substantially in agreement with the reference, but a complete review of all prevailing variants is recommended prior to use. [More info](#)

OTI Annotation: This clone was engineered to express the complete ORF with an expression tag. Expression varies depending on the nature of the gene.

Components: The ORF clone is ion-exchange column purified and shipped in a 2D barcoded Matrix tube containing 10ug of transfection-ready, dried plasmid DNA (reconstitute with 100 ul of water).

Reconstitution Method:

1. Centrifuge at 5,000xg for 5min.
2. Carefully open the tube and add 100ul of sterile water to dissolve the DNA.
3. Close the tube and incubate for 10 minutes at room temperature.
4. Briefly vortex the tube and then do a quick spin (less than 5000xg) to concentrate the liquid at the bottom.
5. Store the suspended plasmid at -20°C. The DNA is stable for at least one year from date of shipping when stored at -20°C.

RefSeq: [NM_001100599.1](#), [NP_001094069.1](#)

RefSeq Size: 2130 bp

RefSeq ORF: 1116 bp

Locus ID: 286075

UniProt ID: [Q96C28](#)

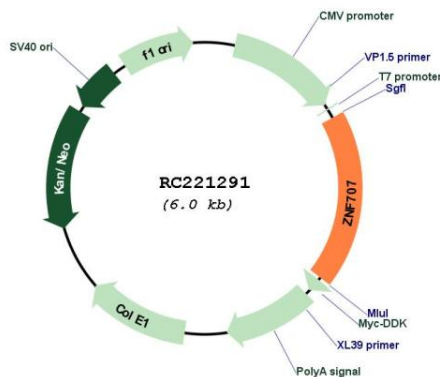
Cytogenetics: 8q24.3

Protein Families: Transcription Factors

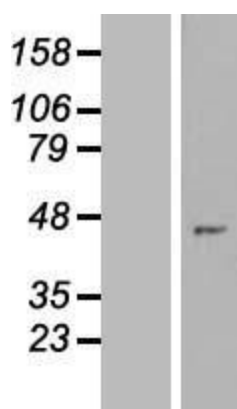
MW: 42.9 kDa

Gene Summary: May be involved in transcriptional regulation.[UniProtKB/Swiss-Prot Function]

Product images:



Circular map for RC221291



Western blot validation of overexpression lysate (Cat# [LY420277]) using anti-DDK antibody (Cat# [TA50011-100]). Left: Cell lysates from untransfected HEK293T cells; Right: Cell lysates from HEK293T cells transfected with RC221291 using transfection reagent MegaTran 2.0 (Cat# [TT210002]).